

B1 INSTALLATION DRAWING

IF THIS DOCUMENT IS PRINTED IN HARDCOPY, IT IS FOR INFORMATION USE ONLY AND THEREFORE IS NOT SUBJECT TO UPDATING CONTROLS. ALWAYS REFER TO SOLIDWORKS VIEWER FOR LATEST ISSUE



THIS DRAWING IS CONFIDENTIAL AND IS SUPPLIED ON THE EXPRESS CONDITION THAT IT SHALL NOT BE LOANED OR COPIED OR DISCLOSED TO ANY OTHER PERSON OR USED FOR ANY OTHER PURPOSE WITHOUT THE WRITTEN CONSENT OF AP RACING LTD.

AP RACING
 Wheler Road
 Coventry
 CV3 4LB
 Tel: +44 024 7663 9595
 Fax: +44 024 7663 9559
 e-mail: sales@apracings.co.uk
 Web site: HTTP://www.apracings.com

CP9230-2 / 3 / 4 / 5S4L SPECIFICATION

GENERAL DESCRIPTION
 THIS IS A LOW COST 4 PISTON DIFFERENTIAL BORE CALIPER DESIGNED TO SUIT A Ø285x28 IRON DISC UP TO A Ø355x32mm DISC. THIS CALIPER IS INTERNALLY PORTED AND AS SUCH DOES NOT NEED AN EXTERNAL FLUID PIPE. THE CALIPER IS MANUFACTURED WITH TAPPED HOLES TO ALLOW THE CUSTOMER TO FIT BLEEDSCREW PROTECTION IF REQUIRED. IT IS FITTED WITH STAINLESS STEEL PAD ABUTMENT WEAR PLATES AND HIGH TEMPERATURE LOW DRAG SEAL IN BORE TYPE SEALS.

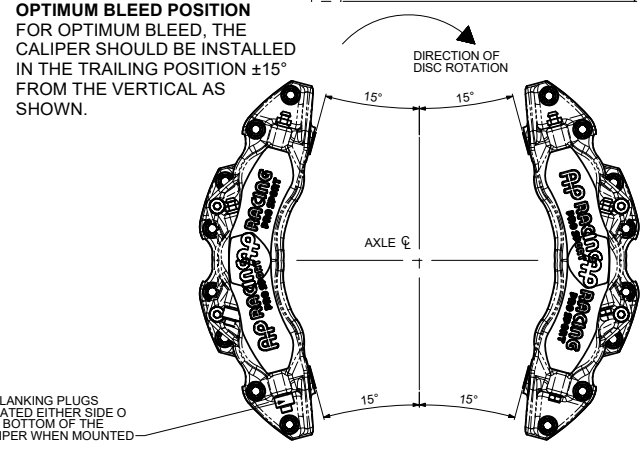
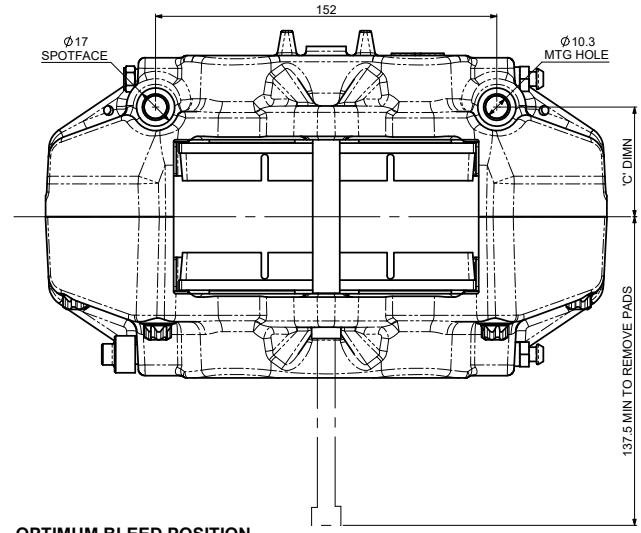
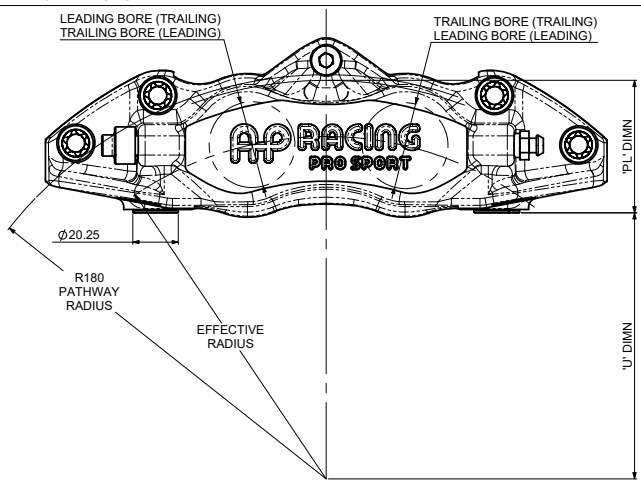
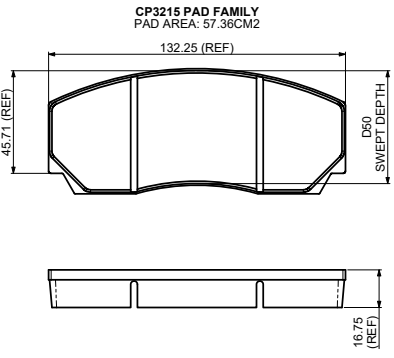
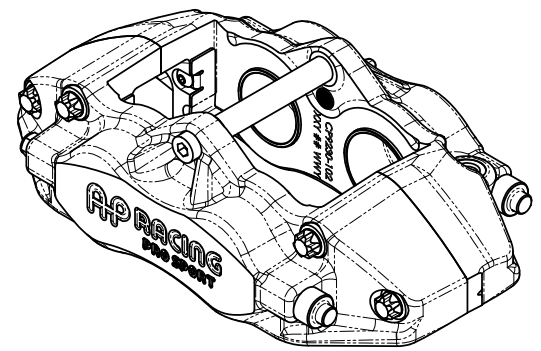
TYPICAL APPLICATION - GENERAL USE CALIPER

CALIPER SPECIFICATION	
BORE SIZE	JK (38.1 x 41.3) (1.5" x 1.63")
PISTON AREA (TOTAL)	24.68cm ²
DISC DIAMETER MAX	355
DISC THICKNESS MAX	32
DISC THICKNESS MIN (WORN CONDITION)	27 (DIFFERENTIAL WEAR NOT TO EXCEED 0.5mm SIDE TO SIDE)
PAD FAMILY	CP3215 D50
PAD THICKNESS MAX	16.75
PAD THICKNESS MIN	6.5
MIN STACK	39.7
HYDRAULIC FEED	M10 x 1 (12 THREAD DEPTH)
DRY WEIGHT (WITHOUT PADS)	2.54kg
EFFECTIVE RADIUS (ON Ø355 DISC)	152.5
PL' DIMENSION (TOP OF PAD FRICTION MATERIAL TO CALIPER MOUNTING FACE)	59
C' DIMENSION (CALIPER OFFSET)	48.79
U' DIMENSION (UPRIGHT MOUNTING)	118.5 U = (DISC Ø/2) - PL
TIGHTENING TORQUES	SEE SHEET 2 FOR CALIPER FASTENER TIGHTENING TORQUES. TYPICAL M10 MOUNTING BOLT: 54Nm (GUIDANCE ONLY)

CALIPER POSITIONING	
RHT	RIGHT HAND TRAILING (BEHIND AXLE)
LHT	LEFT HAND TRAILING (BEHIND AXLE)
RHL	RIGHT HAND LEADING (AHEAD OF AXLE)
LHL	LEFT HAND LEADING (AHEAD OF AXLE)

PART NUMBERING CONVENTION	
PART NUMBER	DESCRIPTION
CP9230-2S4L	RHT - SIDE FEED - 4lb AKB SPRING - STAINLESS PISTONS
CP9230-3S4L	LHT - SIDE FEED - 4lb AKB SPRING - STAINLESS PISTONS
CP9230-4S4L	RHL - SIDE FEED - 4LB AKB SPRING - STAINLESS PISTONS
CP9230-5S4L	LHL - SIDE FEED - 4LB AKB SPRING - STAINLESS PISTONS

INSTALLATION INFORMATION
 THE CALIPER IS DESIGNED SO THAT THE DISC WILL BE MOUNTED CENTRALLY WITHIN A TOLERANCE OF ±0.50mm.
 THE CALIPER IS TO BE MOUNTED IN THE TRAILING OR LEADING POSITION AS SHOWN.
 THE DIAMETRICAL CLEARANCE BETWEEN THE DISC OUTSIDE DIAMETER AND THE PATHWAY SHOULD BE 2.5mm NOMINALLY.



NOTES - SHOULD THE PISTON BE INADVERTENTLY REMOVED, THEY SHOULD BE WIPED CLEAN AND BE SMEARED WITH AP RACING BRAKE FLUID BEFORE REPLACEMENT

KEY TO DIMENSIONS
 DIMENSION 'PL' - TOP OF PAD MATERIAL TO MOUNTING BOSS FACE WITH PAD HANGING DOWN ON THE RETAINING PINS.

DIMENSION 'C' - DISC CENTRE LINE TO MOUNTING STUD CENTRE LINE.

DIMENSION 'U' - WHEEL CENTRE TO CALIPER MOUNTING BOSS FACE, (DISC DIAMETER / 2) - 'PL' DIMENSION.

EFFECTIVE RAD. - DISTANCE FROM WHEEL CENTRE LINE TO NOMINAL PISTON CENTRE LINE.

Issue No.	Alterations			Zone	Initials
	Date & No.	Particulars	#		
1	02/08/23 B9469	FIRST ISSUE		DW	
2	27/03/24 B8469_04	ADDED LEADING VERSIONS SHEET 2: CHANGE CP9040-108 TO CP9230-112 CHANGE CP9500-119 TO CP9230-118 ADDED CP8320-215 ADDED CP8720-162	C1	SW	
3	08/10/24 B8469_07	SHEET 1: CHANGED GENERAL DESCRIPTION ADDED NOTE ABOUT SMEARING PISTONS WITH AP RACING BRAKE FLUID ADDED 'KEY TO DIMENSIONS', DISC THICKNESS MIN CHANGED FROM 26 TO 27 ADDED NOTE SHOWING BLANKING PLUG LOCATIONS WHEN MOUNTED. ADDED Ø20.25 DIM. SHEET 2: ADDED TAPPED HOLE LOCATIONS AND SIZES FOR BLEEDSCREW PROTECTION.	P1 E7 D7 L4 B12	AY	

SCALE 1:1	SHEET 1 OF 3
DRAWN	Dan Woodcock
APPROVED	
DERIVED FROM	CP9200-1cd
TITLE	
4-POT CALIPER INSTALLATION	
DRAWING 355 x 32.0 MAX DISC	
DRG NO.	CP9230-1cd

B1 INSTALLATION DRAWING

IF THIS DOCUMENT IS PRINTED IN HARDCOPY, IT IS FOR INFORMATION USE ONLY AND THEREFORE IS NOT SUBJECT TO UPDATING CONTROLS. ALWAYS REFER TO SOLIDWORKS VIEWER FOR LATEST ISSUE

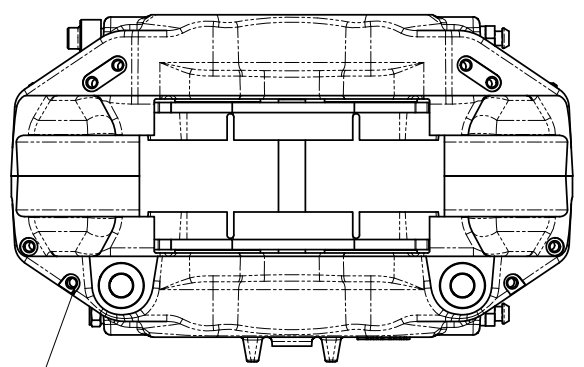


THIS DRAWING IS CONFIDENTIAL AND IS SUPPLIED ON THE EXPRESS CONDITION THAT IT SHALL NOT BE LOANED OR COPIED OR DISCLOSED TO ANY OTHER PERSON OR USED FOR ANY OTHER PURPOSE WITHOUT THE WRITTEN CONSENT OF AP RACING LTD.

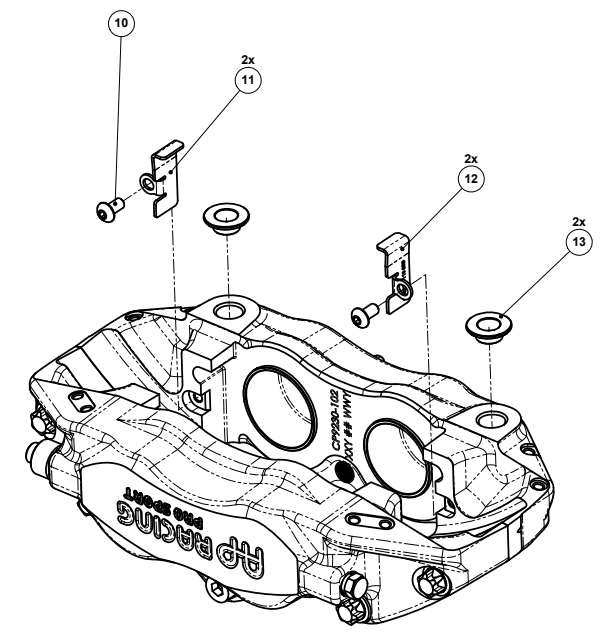
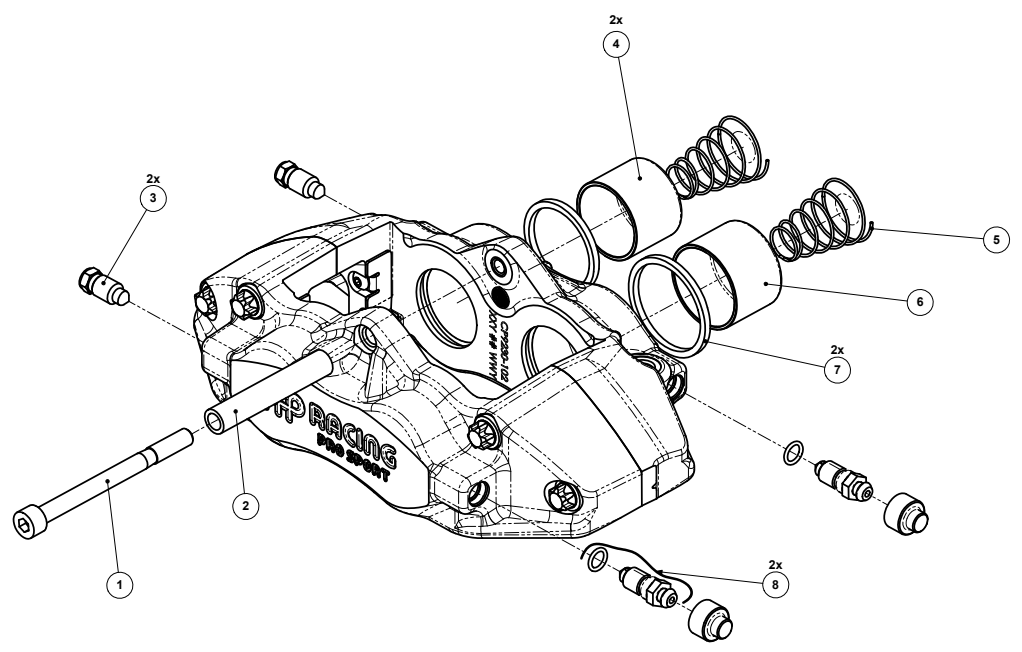
AP RACING
 AP Racing
 Wheler Road
 Coventry
 CV3 4LB
 Tel: +44 024 7663 9595
 Fax: +44 024 7663 9559
 e-mail: sales@apracings.co.uk
 Web site: HTTP://www.apracings.com

CP9230-2 / 3 / 4 / 5S4L SPARES

REF	PART NUMBER	DESCRIPTION	QTY PER ASSEMBLY	FITTING INSTRUCTIONS
1	CP3894-139ST	PAD RETAINER SCREW M8 x 1.25 x 95	1	TIGHTENING TORQUE: 19Nm
2	CP5200-110	PAD RETAINER TUBE	1	
3	CP6320-215	BLANKING PLUG	2	TIGHTENING TORQUE: 17Nm
4	CP9230-112	Ø38.10 (1.50") SST PISTON	2	
5	CP2667-105	4lb ANTI-KNOCKBACK SPRING	4	
6	CP9230-113	Ø41.30 (1.63") SST PISTON	2	
7	CP8518-JK	SEAL KIT (4 SEALS)	1	REFER TO PUBLICATION REF: P14.290 & P14.220
8	CP3880-1	BLEED SCREW KIT	2	TIGHTENING TORQUE: 17Nm
9	CP4970-133	RUBBER BLEEDSCREW CAP	2	
10	CP9440-116ST	ABUTMENT PLATE SCREW M5 x 0.8 x 10	4	APPLY A 1-2mm DROP OF LOCTITE 270 TO THE 2nd FROM LAST THREAD WHEN FITTING. TIGHTENING TORQUE: 3.7Nm
11	CP9230-110	RH ABUTMENT PLATE	2	APPLY A SMEAR OF 736 RTV SILICONE TO BACK OF WEAR PLATE AND APPLY PRESSURE TO ABUTMENT PLATE WHEN FITTING TO ENSURE MINIMUM FILM THICKNESS TO AVOID ANY GAPS. REMOVE EXCESS ONCE TIGHTENED DOWN.
12	CP9230-111	LH ABUTMENT PLATE	2	
13	CP6720-162	MOUNTING BOSS	2	USE LOCTITE 648 WITH ACTIVATOR 7471



8x M5X0.8 BLEED SCREW PROTECTION MOUNTING BOLTS



Issue No.	Alterations		
	Date & No.	Particulars	Zone
-	-	SEE SHEET 1 FOR ISSUE INFORMATION.	-

SCALE 3:2 SHEET 2 OF 3
 DRAWN Dan Woodcock
 APPROVED
 DERIVED FROM CP9200-1cd
 TITLE
 4-POT CALIPER INSTALLATION
 DRAWING 355 x 32.0 MAX DISC
 DRG NO. CP9230-1cd

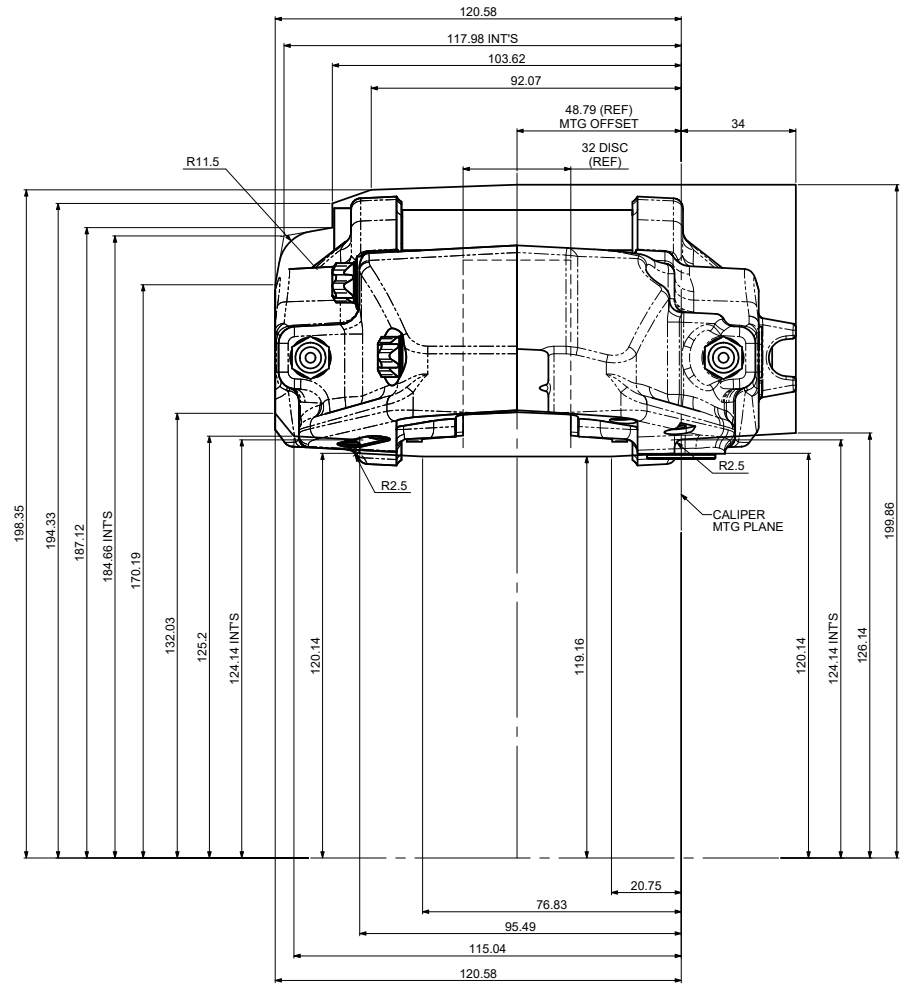
B1 INSTALLATION DRAWING

IF THIS DOCUMENT IS PRINTED IN HARDCOPY, IT IS FOR INFORMATION USE ONLY AND THEREFORE IS NOT SUBJECT TO UPDATING CONTROLS. ALWAYS REFER TO SOLIDWORKS VIEWER FOR LATEST ISSUE



THIS DRAWING IS CONFIDENTIAL AND IS SUPPLIED ON THE EXPRESS CONDITION THAT IT SHALL NOT BE LOANED OR COPIED OR DISCLOSED TO ANY OTHER PERSON OR USED FOR ANY OTHER PURPOSE WITHOUT THE WRITTEN CONSENT OF AP RACING LTD.

AP Racing
Wheler Road
Coventry
CV3 4LB
Tel: +44 024 7663 9595
Fax: +44 024 7663 9559
e-mail: sales@apracings.co.uk
Web site: HTTP://www.apracings.com



RADIAL PROFILE FOR Ø355 x 32 DISC

Issue No.	Alterations		
	Date & No.	Particulars	Zone
-	-	SEE SHEET 1 FOR ISSUE INFORMATION.	-

SCALE 3:2	SHEET 3 OF 3
DRAWN	Dan Woodcock
APPROVED	
DERIVED FROM	CP9200-1cd
TITLE	
4-POT CALIPER INSTALLATION	
DRAWING 355 x 32.0 MAX DISC	
DRG NO.	CP9230-1cd