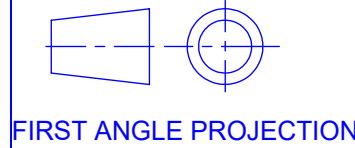


# A2 INSTALLATION DRAWING

If this document is printed in hardcopy, it is for information use only and therefore is not subject to updating controls. Always refer to viewer for latest issue.



THIS DRAWING IS CONFIDENTIAL AND IS SUPPLIED ON THE EXPRESS CONDITION THAT IT SHALL NOT BE LOANED OR COPIED OR DISCLOSED TO ANY OTHER PERSON OR USED FOR ANY OTHER PURPOSE WITHOUT THE WRITTEN CONSENT OF AP RACING LTD.



**AP Racing**  
Wheler Road  
Coventry  
CV3 4LB  
Tel: +44 024 7663 9595  
Fax: +44 024 7663 9559  
e-mail: [sales@aprating.co.uk](mailto:sales@aprating.co.uk)  
Web site: <http://www.aprating.com>

## PART NUMBERING:

"CP3985" DENOTES STANDARD AIRJACK FAMILY or "CP3945" DENOTES HEAVY DUTY AIRJACK FAMILY  
"-XXX" DENOTES THE STROKE OF THE AIRJACK  
"-EV" DENOTES OPTIONAL EXHAUST VALVE

## MAINTENANCE

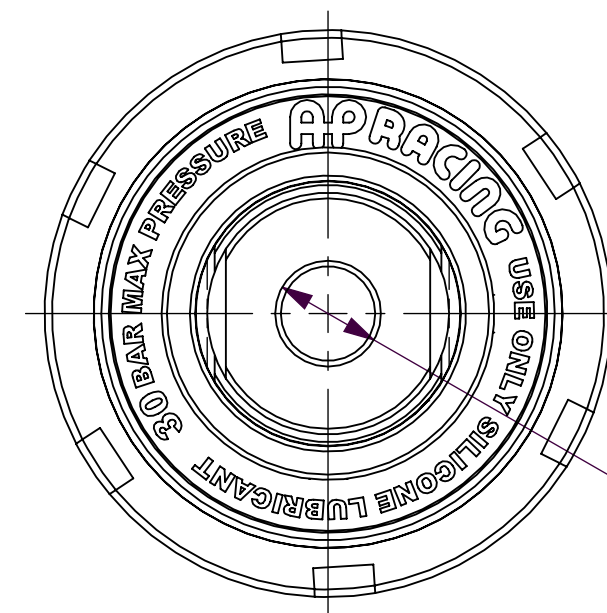
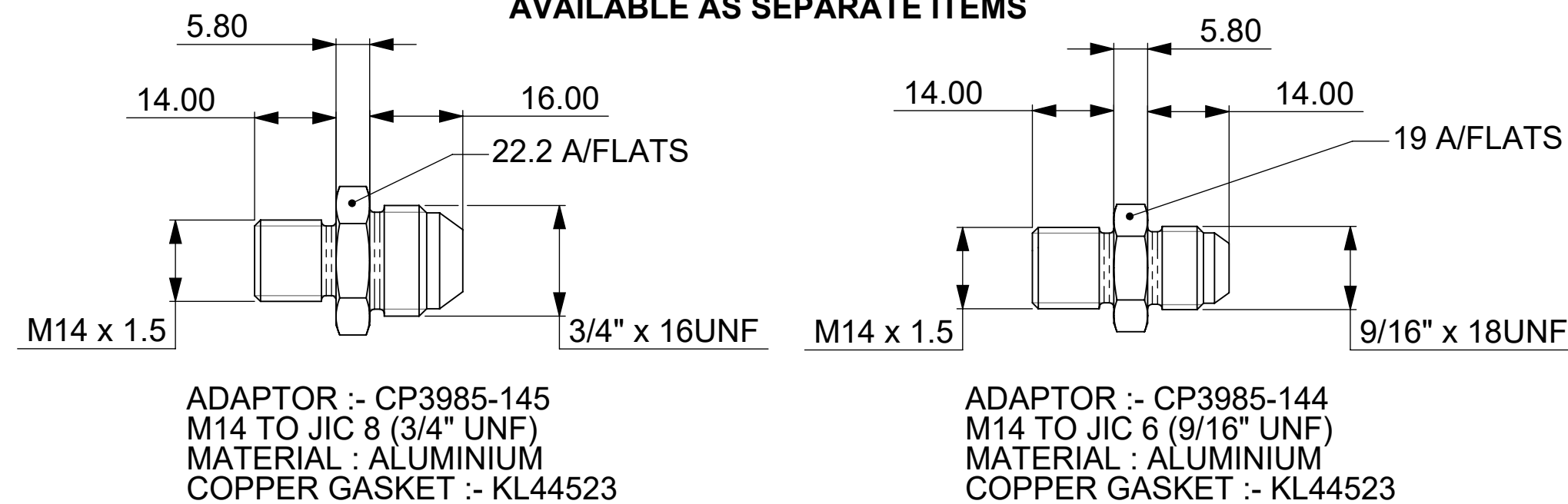
DO NOT USE PETROL OR PARAFFIN FOR CLEANING THE AIR JACK AS THIS WILL DAMAGE THE RUBBER SEALS. USE AN ALCOHOL BASED CLEANING FLUID i.e. METHYLATED SPIRIT. FOR INTERNAL LUBRICATION USE ONLY SILICONE SPRAY OR SILICONE GREASE AS REQUIRED.

## LOADS

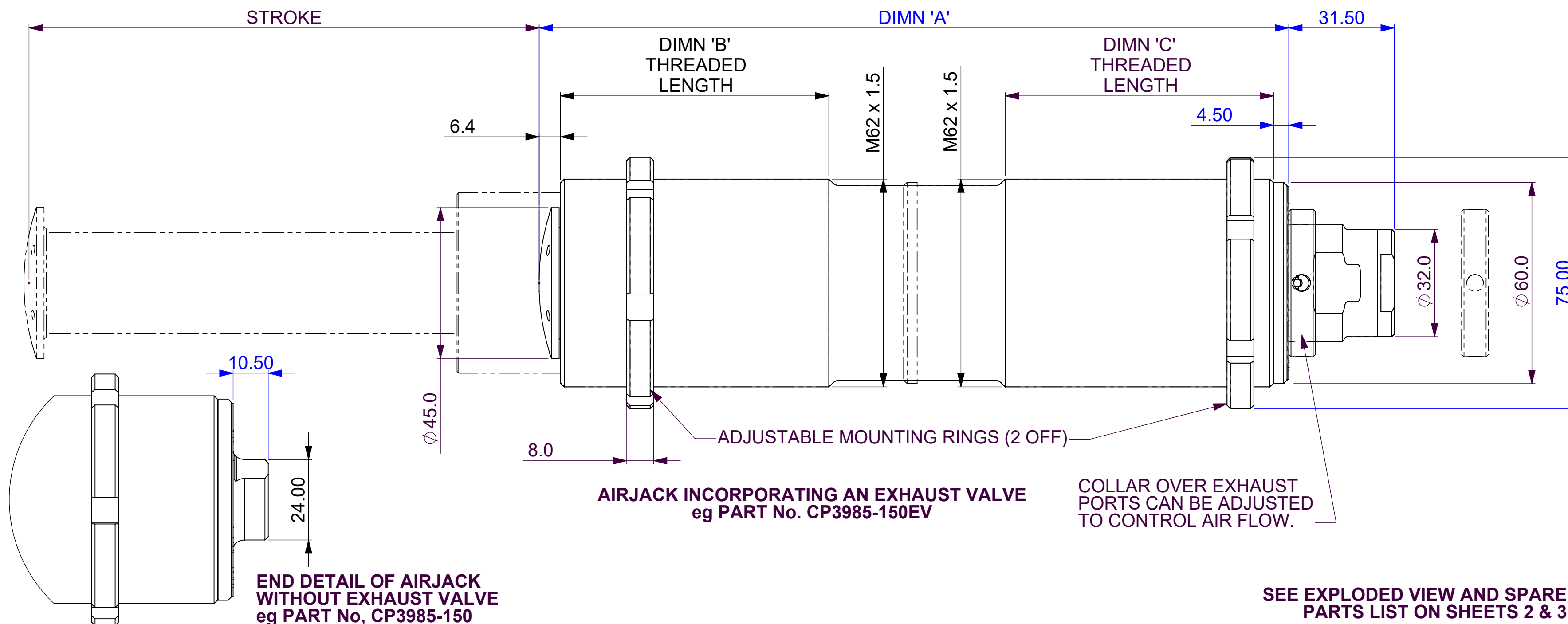
MAXIMUM LIFT CAPABILITY - 675 Kg  
MAXIMUM OPERATING PRESSURE - 30.0 BAR

	ASSEMBLY PART No.	STROKE	DIMN 'A'	DIMN 'B'	DIMN 'C'	MASS
STD	CP3985-150	150 mm	224 mm	80 mm	80 mm	0.83 Kg
	CP3985-150EV	150 mm	224 mm	80 mm	80 mm	0.88kg
	CP3985-230	230 mm	325 mm	80 mm	80 mm	1.07 Kg
	CP3985-230EV	230 mm	325 mm	80 mm	80 mm	1.12 kg
	CP3985-310	310 mm	425 mm	80 mm	80 mm	1.34 Kg
	CP3985-310EV	310 mm	425 mm	80 mm	80 mm	1.39 Kg
HEAVY DUTY	CP3945-230	230 mm	325 mm	80 mm	80 mm	1.28 Kg
	CP3945-230EV	230 mm	325 mm	80 mm	80 mm	1.33 kg
	CP3945-310	310 mm	425 mm	80 mm	80 mm	1.60 Kg
	CP3945-310EV	310 mm	425 mm	80 mm	80 mm	1.65 Kg

### INLET ADAPTORS AND COPPER GASKETS AVAILABLE AS SEPARATE ITEMS



INLET PORT  
M14 x 1.5  
INTERNAL THREAD  
AS SUPPLIED



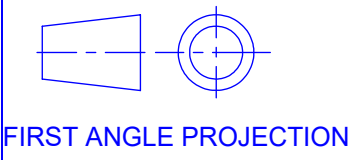
Issue No.	Alterations		Zone	Initials
	Date & No.	Particulars		
1	25/06/03 B3614	CURRENT ISSUE	#	DRA
2	10/11/03	-190EV ASSEMBLY ADDED	#	DRA
3	25/11/03	-110EV ASSEMBLY ADDED DIMN 'C' ADDED	#	DRA
4	18/02/04 B3881	-130EV ASSEMBLY ADDED -110EV REMOVED		SAT
5	26/10/04 B3614	PICTORIAL CHANGES TO SHOW NEW CAP AND THROTTLE. 31.5 WAS 31.0 DIMN 'A' AND MASS IN CHART AMENDED TO LATEST DATA. -230EV & -310EV ADDED TO CHART. INLET ADAPTORS ADDED.		DRA
6	10/03/05 B4207	EXPLODED VIEW ON SHEET 2 AND SPARE PART No CHART ADDED		DRA
7	02/02/06 B4466	ASSY -130EV DIMN 'B' WAS 85 AND DIMN 'C' WAS 50 ASSY'S -150EV TO 230EV.DIMN 'B' AND DIMN 'C' WAS 50 MASSES UP TO -230 WERE IN ORDER:- 0.83, 0.85, 0.97 & 1.09Kg		DRA
8	12/09/06 B4387	SHEET 2 PT No. CHART CAP CP3985-148 WAS -138		DRA
9	05/03/09 B5422	CP3985-130EV, -190EV & -310EV DELETED NON EV TYPE DATA ADDED.		DRA
10	11/03/09 B5422	SHEET 3 ADDED		DRA
11	03/12/09 B5751	CP3985-310/310EV ADDED.		RLB
12	04/12/09 B5751	CROP VIEW CORRECTED	1A	RLB
13	04/12/13 B6967	STAINLESS STEEL FOOT VERSION OF BOTH EV AND NON EV AIRJACKS ADDED 310 STROKE AIRJACK SPARE LISTS ADDED TO TABLES ON SHEETS 2 AND 3 PART NUMBERING IDENTIFICATION NOTE ADDED TO SHEET 1	#	JN
14	07/12/2015 B7320	CP3945 HD VERSIONS ADDED.	#	CDA
15	05/09/2023 B8554	<b>SHEET 2:</b> CP3985-352 WAS CP3985-131 CP3985-353 WAS CP3985-132	A4 A5	HMB

SCALE 1:1		SHEET 1 OF 3	
DRAWN	D.ARROWSMITH		
APPROVED			
DERIVED FROM			
TITLE Ø54 BORE AIR JACK			
DRG NO.	CP3985-1CD		

A2

INSTALLATION  
DRAWING

If this document is printed in hardcopy, it is for information use only and therefore is not subject to updating controls. Always refer to viewer for latest issue.



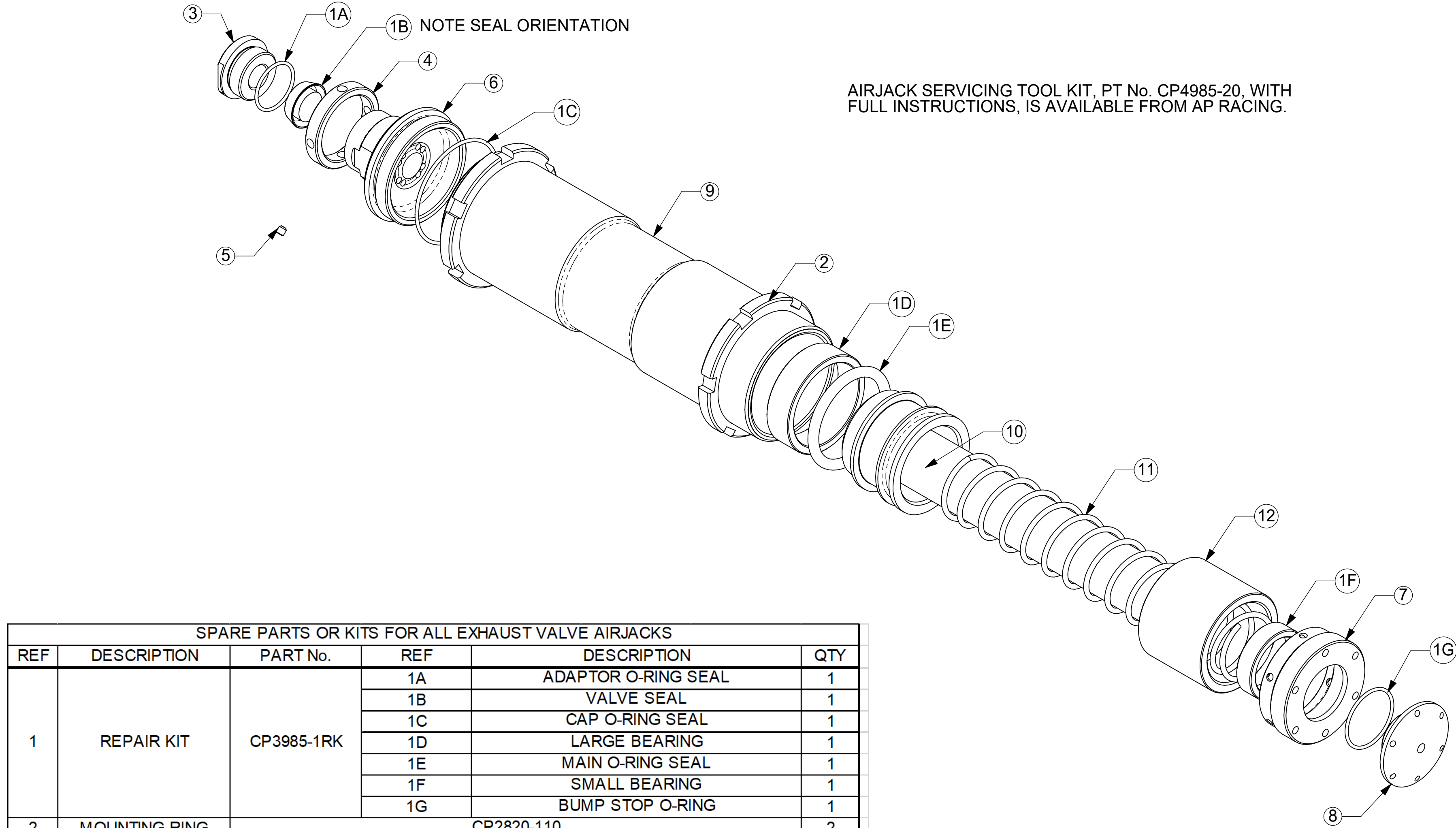
THIS DRAWING IS CONFIDENTIAL AND IS SUPPLIED ON THE EXPRESS CONDITION THAT IT SHALL NOT BE LOANED OR COPIED OR DISCLOSED TO ANY OTHER PERSON OR USED FOR ANY OTHER PURPOSE WITHOUT THE WRITTEN CONSENT OF AP RACING LTD.



© AP Racing Ltd. 2013

AP Racing  
Wheler Road  
Coventry  
CV3 4LB

Tel: +44 024 7663 9595  
Fax: +44 024 7663 9559  
e-mail: [sales@ap racing.co.uk](mailto:sales@ap racing.co.uk)  
Web site: <http://www.ap racing.com>



SPARE PARTS OR KITS FOR ALL EXHAUST VALVE AIRJACKS							
REF	DESCRIPTION	PART No.	REF	DESCRIPTION		QTY	
1	REPAIR KIT	CP3985-1RK	1A	ADAPTOR O-RING SEAL		1	
			1B	VALVE SEAL		1	
			1C	CAP O-RING SEAL		1	
			1D	LARGE BEARING		1	
			1E	MAIN O-RING SEAL		1	
			1F	SMALL BEARING		1	
			1G	BUMP STOP O-RING		1	
2	MOUNTING RING	CP2820-110				2	
3	INLET ADAPTOR	CP2985-172				1	
4	THROTTLE RING	CP3985-139				1	
5	M4 GRUB SCREW	CP7073-121				1	
6	END CAP	CP3985-148				1	
7	BEARING HOUSING	CP3985-104				1	
SPARE PARTS SPECIFIC TO AIRJACK PART NUMBER							
REF	PART NUMBER	CP3985-EV150	CP3985	CP3945	CP3985	CP3945	QTY
			-230EV		-310EV		
8	FOOT	CP3985-103	CP3985-103	CP3945-103	CP3985-103	CP3945-103	1
9	BODY	CP3985-101	CP3985-117		CP3985-118		1
10	PISTON ASSEMBLY	CP3985-4	CP3985-6	CP3945-6	CP3985-7	CP3945-7	1
11	RETURN SPRING	CP3985-107	CP3985-127		CP3985-128		1
12	SPACER (IF FITTED)	CP3985-143	CP3985-352		CP3985-353		1

PARTS LIST FOR 'EV'  
VERSIONS OF AIRJACK

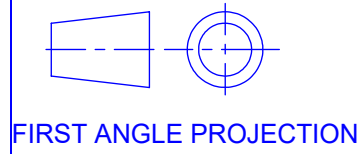
Issue No.	Date & No.	Alterations	Zone	Initials
		Particulars		
-	-	SEE SHEET 1 FOR ISSUE INFORMATION.	-	-

SCALE 1:1		SHEET 2 OF 3	
DRAWN		D.ARROWSMITH	
APPROVED			
DERIVED FROM			
TITLE			
Ø54 BORE AIR JACK			
DRG NO.		CP3985-1CD	



# A2 INSTALLATION DRAWING

If this document is printed in hardcopy, it is for information use only and therefore is not subject to updating controls. Always refer to viewer for latest issue.



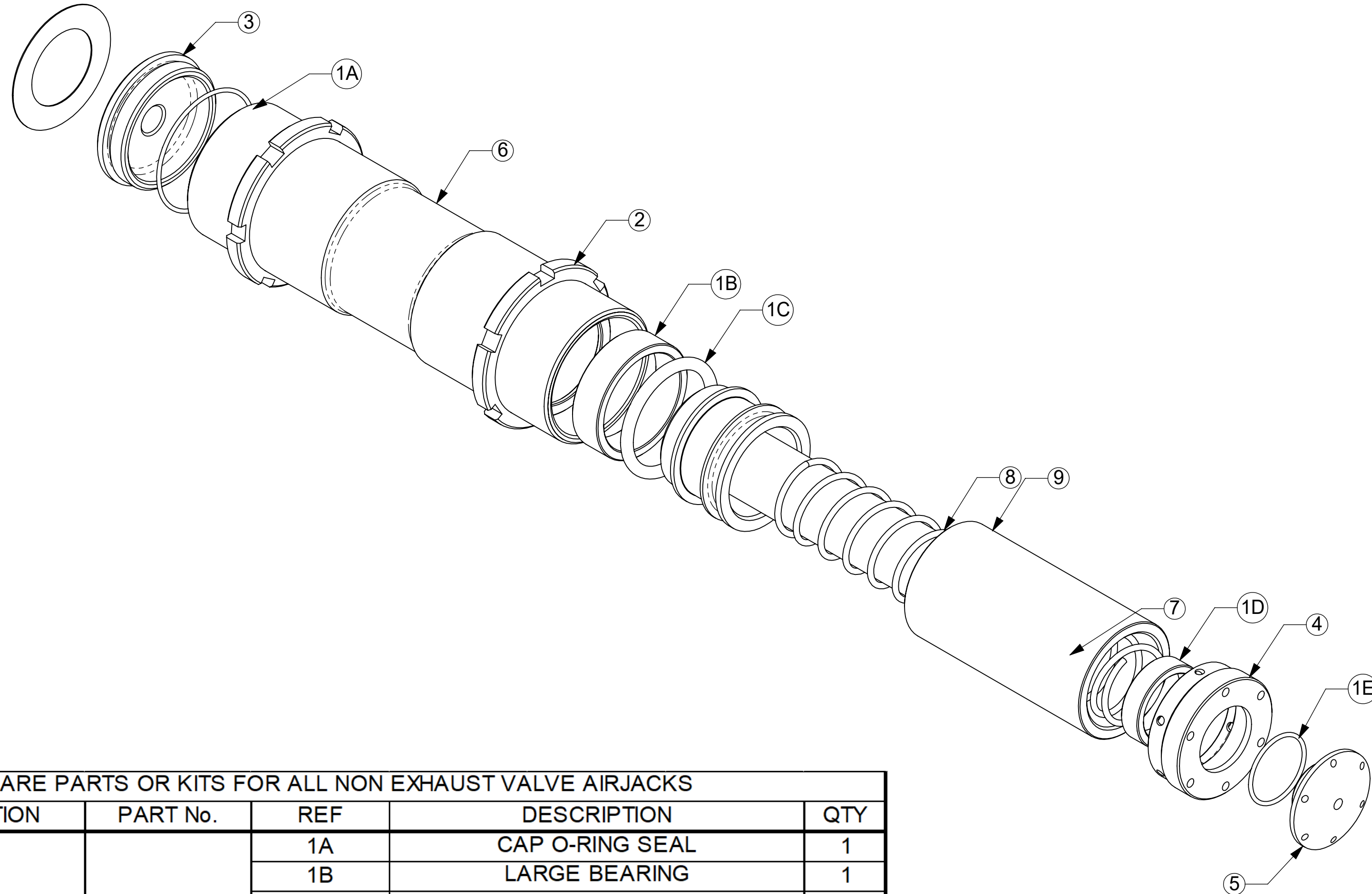
FIRST ANGLE PROJECTION

THIS DRAWING IS CONFIDENTIAL AND IS SUPPLIED ON THE EXPRESS CONDITION THAT IT SHALL NOT BE LOANED OR COPIED OR DISCLOSED TO ANY OTHER PERSON OR USED FOR ANY OTHER PURPOSE WITHOUT THE WRITTEN CONSENT OF AP RACING LTD.



AP Racing  
Wheler Road  
Coventry  
CV3 4LB

Tel: +44 024 7663 9595  
Fax: +44 024 7663 9559  
e-mail: [sales@ap racing.co.uk](mailto:sales@ap racing.co.uk)  
Web site: <http://www.ap racing.com>



SPARE PARTS OR KITS FOR ALL NON EXHAUST VALVE AIRJACKS							
REF	DESCRIPTION	PART No.	REF	DESCRIPTION			QTY
1	REPAIR KIT	CP3985-11RK	1A	CAP O-RING SEAL			1
			1B	LARGE BEARING			1
			1C	MAIN O-RING SEAL			1
			1D	SMALL BEARING			1
			1E	BUMP STOP O-RING			1
2	MOUNTING RING	CP2820-110					2
3	END CAP	CP3985-157					1
4	BEARING HOUSING	CP3985-104					1
SPARE PARTS SPECIFIC TO AIRJACK PART NUMBER							
REF	PART NUMBER	CP3985-150	CP3985	CP3945	CP3985	CP3945	QTY
			-230		-310		
5	FOOT	CP3985-103	CP3985-103	CP3945-103	CP3985-103	CP3945-103	1
6	BODY	CP3985-101	CP3985-117		CP3985-118		1
7	PISTON ASSEMBLY	CP3985-4	CP3985-6	CP3945-6	CP3985-7	CP3945-7	1
8	RETURN SPRING	CP3985-107	CP3985-127		CP3985-128		1

**PARTS LIST FOR NON 'EV'  
VERSIONS OF AIRJACK**

Issue No.	Date & No.	Alterations Particulars	Zone	Initials
-	-	SEE SHEET 1 FOR ISSUE INFORMATION.	-	-
SCALE 1:1		SHEET 3 OF 3		
DRAWN		D.ARROWSMITH		
APPROVED				
DERIVED FROM				
TITLE				
Ø54 BORE AIRJACK				
DRG NO.		CP3985-1CD		