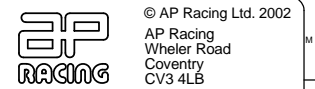


A1 INSTALLATION DRAWING

IF THIS DOCUMENT IS PRINTED IN HARDCOPY IT IS FOR INFORMATION USE ONLY AND THEREFORE IS NOT SUBJECT TO UPDATING CONTROLS. ALWAYS REFER TO SOLIDWORKS VIEWER FOR LATEST ISSUE



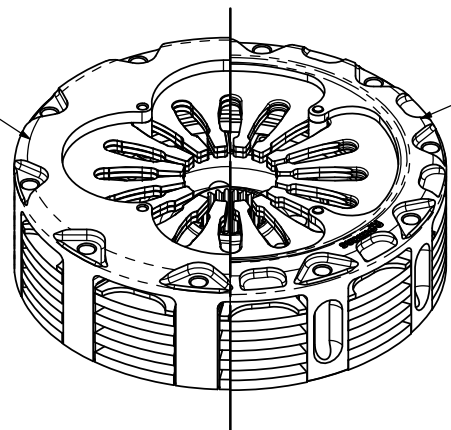
THIS DRAWING IS CONFIDENTIAL AND IS SUPPLIED ON THE EXPRESS CONDITION THAT IT SHALL NOT BE LOANED OR COPIED OR DISCLOSED TO ANY OTHER PERSON OR USED FOR ANY OTHER PURPOSE WITHOUT THE WRITTEN CONSENT OF AP RACING LTD.



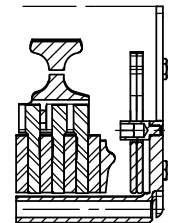
© AP Racing Ltd. 2002
AP Racing
Wheler Road
Coventry
CV3 4LB
Tel: +44 024 7663 9595 e-mail: sales@apracing.co.uk
Fax: +44 024 7663 9559 Web site: HTTP://www.apracing.com

CP7223 Ø140mm (5.5") PULL TYPE CARBON / CARBON CLUTCH ASSEMBLY. INCLUDING AN OPTIONAL CUSHION FLYWHEEL SYSTEM (CFS) AND CONCENTRIC SLAVE CYLINDER

SECTION SHOWING AN ALUMINIUM COVER



SECTION SHOWING A STEEL COVER



THIS CLUTCH ASSEMBLY ALSO HAS AN INCREASED DRIVEN PLATE DRIVE AREA OPTION. THIS WILL IMPROVE THE DURABILITY OF THE CLUTCH IN APPLICATIONS WHERE THE GEAR BOX INPUT SHAFT IS LESS WELL SUPPORTED. THIS OPTION REQUIRES A SPECIAL HUB TO SUIT. CONTACT AP RACING FOR DETAILS

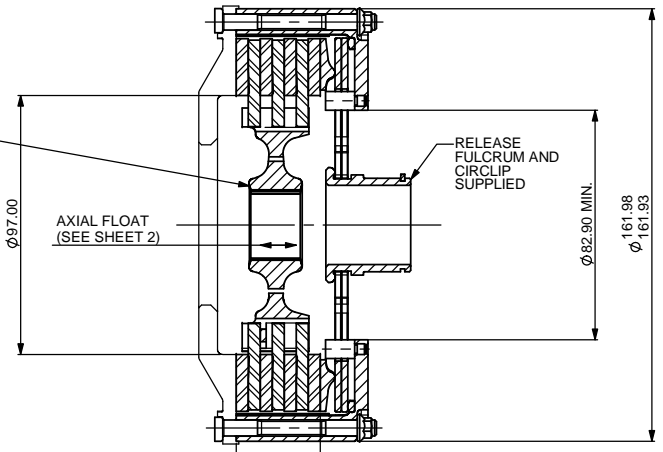
STANDARD HUBS.
(FOR INCREASED DRIVE AREA HUBS PLEASE CONTACT AP RACING).

HUB PART No.	SPLINE
CP5143-104 (S/T)	1.16" x 26 x 30°
CP5143-102 (S/T)	1.00" x 23
CP5143-103 (S/T)	0.87" x 20

HUB MATERIAL SUFFIX.
S = STEEL
T = TITANIUM

HUBS ARE AVAILABLE WITH OTHER SPLINE SIZES.
CONTACT AP RACING FOR DETAILS.

FOR HUB ENVELOPE SEE SHEET 2.



Ø97.00

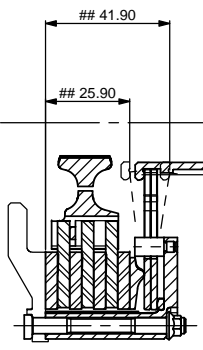
AXIAL FLOAT (SEE SHEET 2)

RELEASE FULCRUM AND CIRCLIP SUPPLIED

Ø161.98
Ø161.93

A-A

31.50 CARBON / CARBON STACK HEIGHT



B-B

RELEASE TRAVEL TO BE LIMITED TO 4.00mm MAXIMUM

BEARING POSITION

TO ENSURE ADEQUATE RELEASE TRAVEL AND CLUTCH LIFE THESE LIMITS HAVE BEEN CALCULATED USING AN ADDITIONAL 20% RELEASE TRAVEL AND 50% MORE WEAR IN THAN SPECIFIED. (CALCULATED FROM THE FRICTION FACE.)

THESE FIGURES COVER THE FULL RANGE OF CLUTCHES IN THE CP7223 FAMILY.

FOR OPTIONAL PULL TYPE SLAVE CYLINDER DETAIL SEE SHEET 4

CP7223 CLUTCH FAMILY

MAXIMUM DYNAMIC TORQUE CAPACITY			
	1142	952	1333
(Nm)	1142	952	1333
(ft.lb)	842	701	982
RELEASE LOAD			
Max. Peak Worn (N)	5700	3300	6200
Max. Peak New (N)	4000	2750	4800
WEAR IN (See Note)			
	1.5	1.00	1.25
Set Up Height			
Set Up Height New	37.57	37.65	37.57
Set Up Height Worn	29.72	32.32	29.72
(Set Up Height is calculated from the flywheel friction face.)			
Release Ratio			
	4.41	5.24	4.41
Assembly Mass			
	1.79 KG	2.39	2.17
Estimated Driven Plate & STL Hub Inertia = 0.001219 Kgm²			

PERFORMANCE SUFFIX	OH	BE SINGLE SPRING	GH
For Reference			
Diaphragm Spring Rate	ORA	BUF	GRY
Clutch Ratio	HIR	EHR	HiR

MATERIAL SUFFIX	COVER MATERIAL	PRESSURE PLATE MATERIAL	CARBON / CARBON TYPE
02	ALUMINIUM	STEEL	HEAVY DUTY
03	STEEL	STEEL	HEAVY DUTY
05	TITANIUM	STEEL	HEAVY DUTY
08	ALUMINIUM	TITANIUM	HEAVY DUTY

FLYWHEEL TYPE	SUFFIX	COMMENTS
STANDARD FLAT FLYWHEEL	FN	FOR INSTALLATION DATA SEE SHEET 2
STANDARD STEPPED FLYWHEEL	SN	n/a
FLAT FLYWHEEL WITH CFS	FC	FOR INSTALLATION DATA SEE SHEET 2 AND FLYWHEEL DETAILS SEE SHEET 3
STEPPED FLYWHEEL WITH CFS	SC	n/a

Sample AP Racing Part No. **CP7223-OH02-FC**
If a displacement transducer is required add '-DT' to the part number (See sheet 4)
If the increased drive area option is required add '-WD' to the part number

WEAR IN
THIS CLUTCH HAS BEEN DESIGNED FOR THE WEAR IN INDICATED ABOVE, WHICH MUST BE COMPENSATED FOR BY USING PRESSURE PLATE 'SHIMS' FROM THE KITS DETAILED BELOW.
THE MAXIMUM CARBON STACK WEAR FOR THIS ASSEMBLY IS 6.00mm

	OH	BE	GH
STANDARD KIT	CP6504-7SS (0.50 TO 4.50 IN 0.50 INC)	CP7224-2SS (STEEL) CP7223-1T (TITANIUM) (0.50 TO 5.00 IN 0.50 INC.)	CP6504-7SS (0.50 TO 4.50 IN 0.50 INC)
INTERMEDIATE KIT	CP6504-8SS (0.25 TO 4.25 IN 0.50 INC.)	CP7224-3SS (STEEL) CP7223-1T (TITANIUM) (0.25 TO 5.25 IN 0.50 INC.)	CP6504-8SS (0.25 TO 4.25 IN 0.50 INC)

Issue No.	Alterations			Zone	Initials
	Date & No.	Particulars	#		
4	22/09/04 C2534	INSTALLATION DRAWING REDRAWN TO LATEST FORMAT GH REFERENCE ADDED.	#	AWSS	JG
5	05/10/04	SHEET 2: DETAIL N ADDED. R5.75 MIN. ADDED. 44.50" WAS 45"	#		JG
6	18/10/04 C2551	SHEET 2: FLYWHEEL HOLE SIZE Ø6.0126.000 WAS Ø6.15/6.05	#		JG
7	03/11/04 C2441	LVDT CHANGE (SHEET 4)	#		JG
8	17/01/05 C2532	BE WAS BH CP7223-13 WAS CP6504-7 CP7223-14 WAS CP6504-8	#		JG
9	21/02/05 C2324	COVER MACHINING CHANGED IN LINE WITH LATEST COMPONT.	#		JG
10	26/04/05 C2670	GH SPEC ADDED.	#		JG
11	07/11/05 RAC21284	TORQUE CAPACITY: OH - 1142 WAS 1042 BE - 1333 WAS 1215	#		JG
12	05/12/05 C2796	'08' OPTION AND TITANIUM PRESSURE PLATE KITS ADDED.	#		JG
13	31/10/06 C3005	STEEL COVER WEIGHT AND INERTIA 'S' ADDED. STEEL SECTION VIEW ADDED	#		JG
14	01/11/06 C3005	Ti cover weight and inertia added.	-		JG
15	24/01/07 C3039	BOLT LANDS: 6.90/6.80 WAS 6.30/6.20	#		JG
16	01/02/07	INCREASED DRIVE AREA DETAIL ADDED.	#		JG
17	08/01/08	EQUI-SPACED REMOVED FROM 3 HOLE NOTE (SHEET 4)	#		JG
18	30/04/09	BE PRESSURE PLATE KIT RANGE REVISION	#		JG
19	25/06/09	SUH: OH 37.57/36.33 WAS 36.48 29.72 WAS 26.26 BE 37.65/36.25 WAS 36.48 32.32 WAS 36.48 GH 37.57/36.33 WAS 36.48 29.72 ADDED.	#		JG
20	01/06/11	CP6504-8SS (PRESSURE PLATE KIT) DESCRIPTION CORRECTION.	#		JG
21	28/04/16	'GH' SPECIFICATION: WEARING 1.25 WAS 1.50	#		JG
22	02/07/19 RAC23346	'MAX NEW WORN' WAS 'AT TRAVEL' BE WEAR IN 1.00 WAS 0.75 RELEASE LOADS UPDATED: 'OH' WAS 2500 (5400) 'BE' WAS 2500 (3100) 'GH' WAS 3500 (5620)	#		K10 DSM K11

SCALE 1:1 SHEET 1 OF 4
DRAWN: Jeremy Govan
APPROVED:
DERIVED FROM: cp7223-1cd
TITLE: Ø140mm (5.5") CARBON / CARBON PULL TYPE CLUTCH INSTALLATION
DRG NO.: cp7223-1cd

A1 INSTALLATION DRAWING

IF THIS DOCUMENT IS PRINTED IN HARDCOPY IT IS FOR INFORMATION USE ONLY AND THEREFORE IS NOT SUBJECT TO UPDATING CONTROLS. ALWAYS REFER TO SOLIDWORKS VIEWER FOR LATEST ISSUE



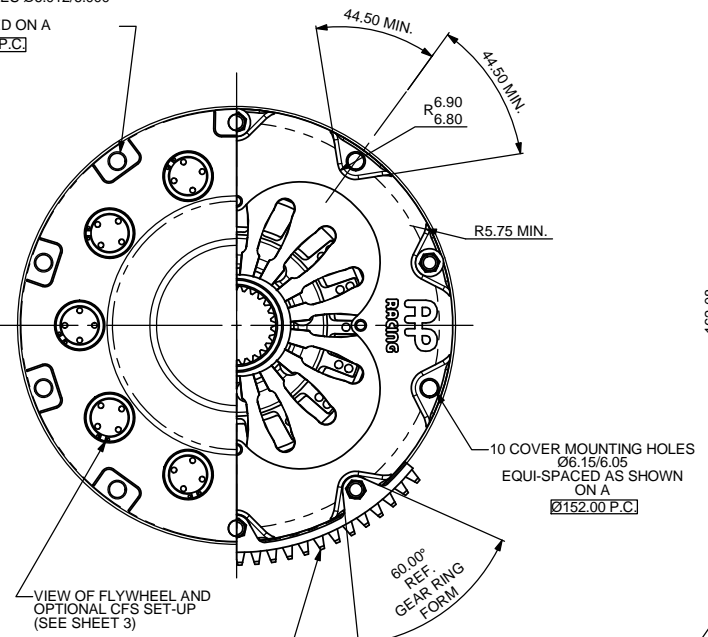
THIS DRAWING IS CONFIDENTIAL AND IS SUPPLIED ON THE EXPRESS CONDITION THAT IT SHALL NOT BE LOANED OR COPIED OR DISCLOSED TO ANY OTHER PERSON OR USED FOR ANY OTHER PURPOSE WITHOUT THE WRITTEN CONSENT OF AP RACING LTD.

AP RACING © AP Racing Ltd. 2002
 AP Racing
 Wheler Road
 Coventry
 CV3 4LB
 Tel: +44 024 7663 9595 e-mail: sales@ap racing.co.uk
 Fax: +44 024 7663 9559 Web site: HTTP://www.ap racing.com

FLYWHEEL DIMENSIONS

(RECOMMENDED FOR CP4703 STUDS)
 # 10 MOUNTING HOLES Ø6.012/6.000

EQUI-SPACED ON A
 Ø152.00 P.C.

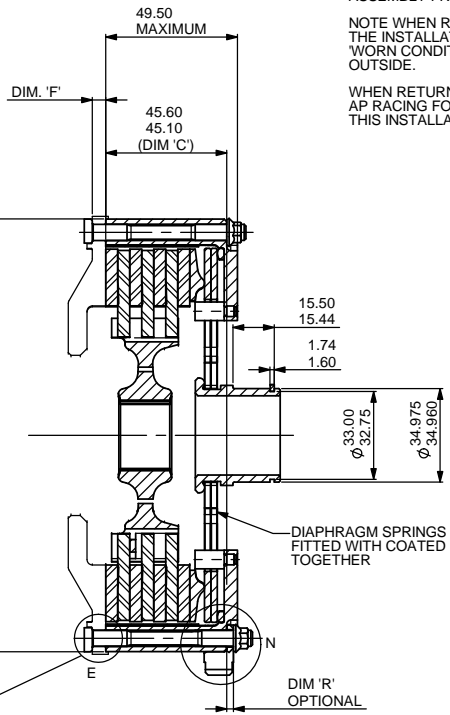


RECOMMENDED CLUTCH MOUNTING :
 (FOR ALL TYPES OF ASSEMBLY)
 M6 x 1.0, CP4703 FAMILY STUD AND
 K-LOCK NUT.
 NUTS TO BE TIGHTENED IN A
 DIAMETRICALLY-OPPOSITE
 SEQUENCE, HALF A TURN AT A TIME
 TIGHTENING TORQUE : 10Nm (7.5 ft.lb)

LENGTH OF STUD REQUIRED TO BE
 CALCULATED THUS :

$$\text{STUD LENGTH} = \text{DIMENSIONS 'C' + 'F' + ('R' OPTIONAL) + NUT}$$

THIS CALCULATED LENGTH TO BE ROUNDED
 UP TO THE NEXT AVAILABLE STANDARD STUD
 LENGTH.

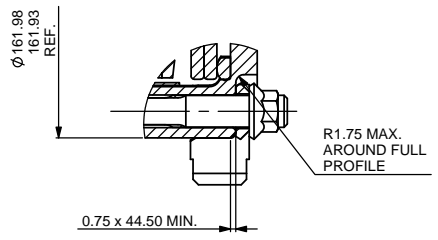
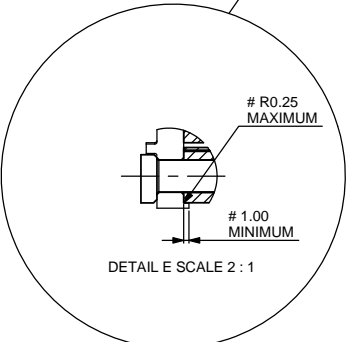
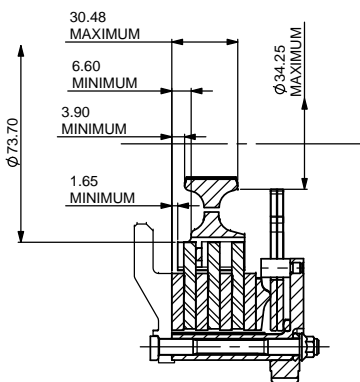
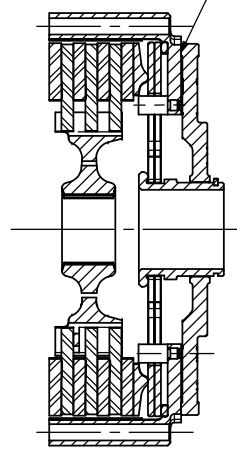


THIS ASSEMBLY IS SUPPLIED NEW WITH AN
 INSTALLATION PLATE AS SHOWN. THIS IS TO
 ALLOW THE ASSEMBLY TO BOLTED TO THE
 FLYWHEEL WITHOUT DAMAGING ANY OF THE
 CLUTCH COMPONENTS.

AFTER BOLTING THE CLUTCH TO THE FLYWHEEL
 REMOVE THE CIRCLIP AND INSTALLATION PLATE
 AND RETAIN FOR USE WHEN REMOVING THE
 ASSEMBLY FROM THE FLYWHEEL.

NOTE WHEN REMOVING A WORN CLUTCH ASSEMBLY
 THE INSTALLATION PLATE IS TO BE FITTED WITH THE
 'WORN CONDITION - THIS SIDE UP' INSTRUCTION ON THE
 OUTSIDE.

WHEN RETURNING THIS CLUTCH ASSEMBLY BACK TO
 AP RACING FOR RECONDITIONING PLEASE RETURN WITH
 THIS INSTALLATION PLATE FITTED.



Issue No	Alterations		Zone	Initials
	Date & No.	Particulars		
4	22/09/04 C2534	INSTALLATION DRAWING REDRAWN TO LATEST FORMAT BH REFERENCE ADDED.	#	AW5
5	05/10/04	SHEET 2 - DETAIL N ADDED. R5.75 MIN. ADDED. 44.50° WAS 45°	#	JG
6	18/10/04 C2551	FLYWHEEL HOLE SIZE Ø6.012/6.000 WAS Ø6.15/6.05	#	JG
7	03/11/04 C2441	LVDT CHANGE (SHEET 4)	#	JG
8	17/01/05 C2532	BE WAS BH CP7223-13 WAS CP6504-7 CP7223-14 WAS CP6504-8	#	JG
9	21/02/05 C2324	COVER MACHINING CHANGED IN LINE WITH LATEST COMPONT.	#	JG
10	26/04/05 C2670	GH SPEC ADDED.	#	JG
11	07/11/05 RAC21284	TORQUE CAPACITY - OH - 1142 WAS 1042 BE - 1333 WAS 1215	#	JG
12	05/12/05 C2796	'08' OPTION AND TITANIUM PRESSURE PLATE KITS ADDED.	#	JG
13	31/10/06 C3005	STEEL COVER WEIGHT AND INERTIA 'S ADDED. STEEL SECTION VIEW ADDED	#	JG
14	01/11/06 C3005	Ti cover weight and inertia added.	-	JG
15	24/01/07 C3039	BOLT LANDS: 6.90/6.80 WAS 6.30/6.20	#	JG
16	01/02/07	INCREASED DRIVE AREA DETAIL ADDED.	#	JG
17	08/01/08	EQUI-SPACED REMOVED FROM 3 HOLE NOTE (SHEET 4)	#	K2
18	30/04/09	BE PRESSURE PLATE KIT RANGE REVISION	#	JG
19	25/06/09	SUH: OH 37.57/36.33 WAS 36.48 29.72 WAS 26.26 BE 37.65/36.25 WAS 36.48 32.32 WAS 36.48 GH 37.57/36.33 WAS 36.48 29.72 ADDED.	#	JG
20	01/06/11	CP6504-8SS (PRESSURE PLATE KIT) DESCRIPTION CORRECTION.	#	JG
21	28/04/16	'GH' SPECIFICATION: WEARING 1.25 WAS 1.50	#	JG

SCALE 1:1 SHEET 2 OF 4
 DRAWN: Jeremy Govan
 APPROVED:
 DERIVED FROM: cp7223-1cd
 TITLE:
 Ø140mm (5.5") CARBON / CARBON
 PULL TYPE CLUTCH INSTALLATION
 DRG NO. cp7223-1cd

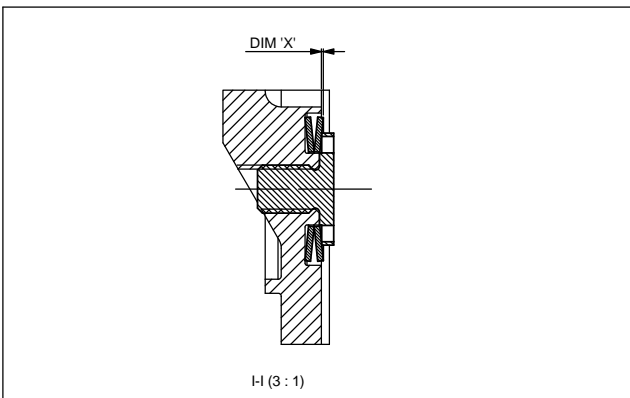
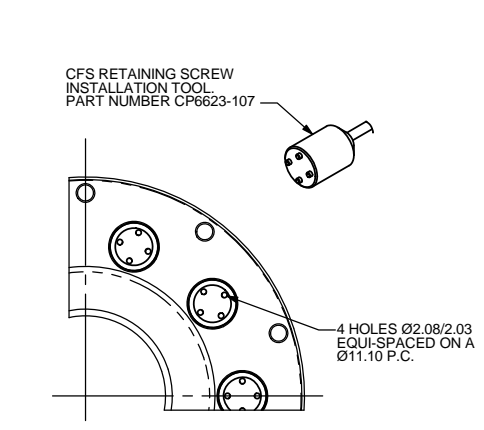
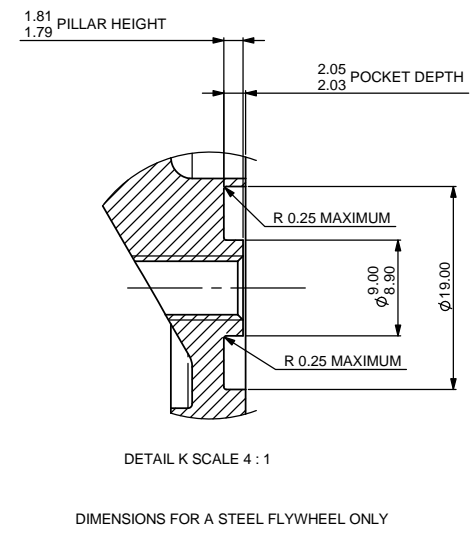
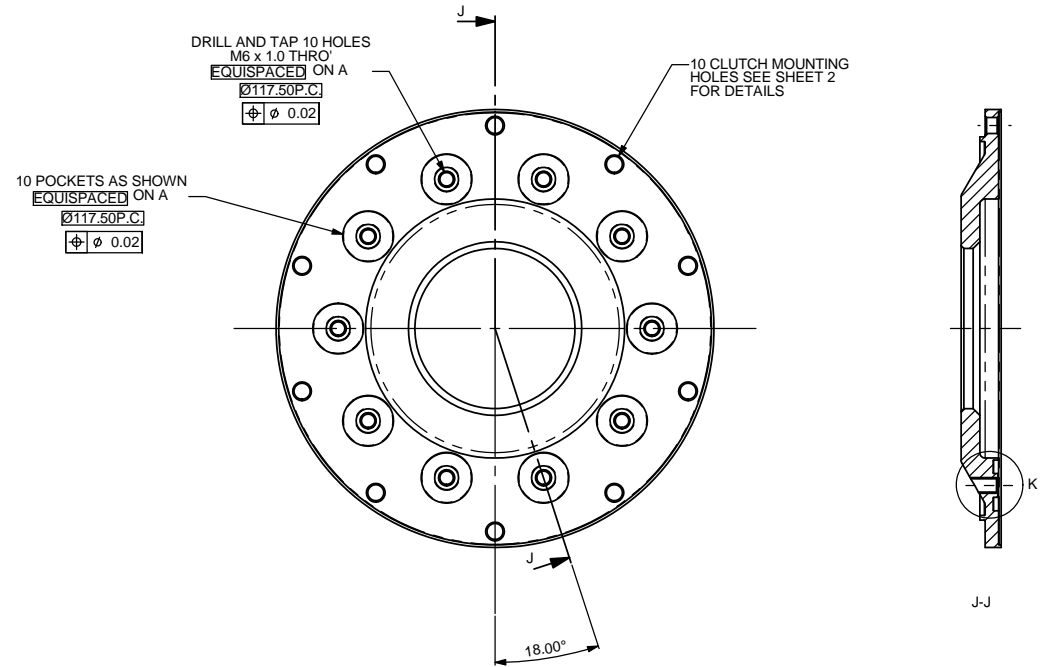
A1 INSTALLATION DRAWING

IF THIS DOCUMENT IS PRINTED IN HARDCOPY IT IS FOR INFORMATION USE ONLY AND THEREFORE IS NOT SUBJECT TO UPDATING CONTROLS. ALWAYS REFER TO SOLIDWORKS VIEWER FOR LATEST ISSUE

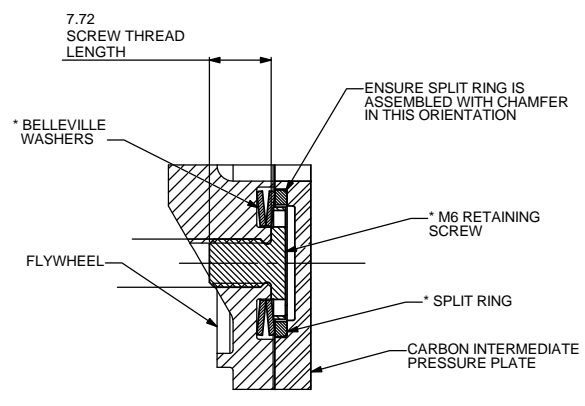
FIRST ANGLE PROJECTION

THIS DRAWING IS CONFIDENTIAL AND IS SUPPLIED ON THE EXPRESS CONDITION THAT IT SHALL NOT BE LOANED OR COPIED OR DISCLOSED TO ANY OTHER PERSON OR USED FOR ANY OTHER PURPOSE WITHOUT THE WRITTEN CONSENT OF AP RACING LTD.

AP RACING © AP Racing Ltd. 2002
 AP Racing
 Wheler Road
 Coventry
 CV3 4LB
 Tel: +44 024 7663 9595 e-mail: sales@ap racing.co.uk
 Fax: +44 024 7663 9559 Web site: HTTP://www.ap racing.com



WITH TIME AND USE THE CUSHIONING EFFECT WILL DETERIORATE AND COMPONENTS SHOULD BE SERVICED WITH THE ABOVE KIT WHEN EITHER THE BELLEVILLES BECOME LOOSE OR WHEN DIMENSION 'X' FALLS BELOW 0.2, TAKEN AS THE AVERAGE OF 4 EQUALLY SPACED MEASUREMENTS AROUND THE CIRCUMFERENCE OF THE BELLEVILLE.



* CUSHION FLYWHEEL COMPONENTS AVAILABLE IN KIT FORM.
PART No. CP6623-2

CP6623-2 Steel Cushion Flywheel Kit Installation

- Machine 10 equispaced pockets and M6 x 1.0 tapped holes into the friction surface of the flywheel, to the size and position shown on opposite.
- Place the two Belleville washers supplied into each pocket in the orientation shown below.
- Apply Loctite 620 to threads and tighten the M6 x 1.0 screws onto the Belleville washers to a torque of 4Nm.
- Compress split washers using pliers and fit into recesses in bottom carbon/carbon pressure plate. Ensure split washers are flush with the friction face

Issue No	Alterations		Zone	Initials
	Date & No.	Particulars		
4	22/09/04 C2534	INSTALLATION DRAWING REDRAWN TO LATEST FORMAT BH REFERENCE ADDED.	#	JG
5	05/10/04	SHEET 2 : DETAIL N ADDED. R5.75 MIN. ADDED. 44.50" WAS 45"	#	JG
6	18/10/04 C2551	SHEET 2 : FLYWHEEL HOLE SIZE Ø6.012/6.000 WAS Ø6.15/6.05	#	JG
7	03/11/04 C2441	LVDT CHANGE (SHEET 4)	#	JG
8	17/01/05 C2532	BE WAS BH CP7223-13 WAS CP6504-7 CP7223-14 WAS CP6504-8	#	JG
9	21/02/05 C2324	COVER MACHINING CHANGED IN LINE WITH LATEST COMPONT.	#	JG
10	26/04/05 C2670	GH SPEC ADDED.	#	JG
11	07/11/05 RAC21284	TORQUE CAPACITY : OH - 1142 WAS 1042 BE - 1333 WAS 1215	#	JG
12	05/12/05 C2796	'08' OPTION AND TITANIUM PRESSURE PLATE KITS ADDED.	#	JG
13	31/10/06 C3005	STEEL COVER WEIGHT AND INERTIA 'S' ADDED. STEEL SECTION VIEW ADDED	#	JG
14	01/11/06 C3005	Ti cover weight and inertia added.	-	JG
15	24/01/07 C3039	BOLT LANDS: 6.90/6.80 WAS 6.30/6.20	#	JG
16	01/02/07	INCREASED DRIVE AREA DETAIL ADDED.	#	JG
17	08/01/08	EQUI-SPACED REMOVED FROM 3 HOLE NOTE (SHEET 4)	#	K2
18	30/04/09	BE PRESSURE PLATE KIT RANGE REVISION	#	JG
19	25/06/09	SUH; OH 37.57/36.33 WAS 36.48 23.72 WAS 26.26 BE 37.65/36.25 WAS 36.48 32.32 WAS 36.48 GH 37.57/36.33 WAS 36.48 23.72 ADDED	#	JG
20	01/06/11	CP6504-8SS (PRESSURE PLATE KIT) DESCRIPTION CORRECTION.	#	JG
21	28/04/16	'GH' SPECIFICATION: WEARING 1.25 WAS 1.50	#	JG

SCALE 1:1 SHEET 3 OF 4

DRAWN: Jeremy Govan

APPROVED:

DERIVED FROM: cp7223-1cd

TITLE:
**Ø140mm (5.5") CARBON / CARBON
 PULL TYPE CLUTCH INSTALLATION**

DRG NO. cp7223-1cd

A1 INSTALLATION DRAWING

IF THIS DOCUMENT IS PRINTED IN HARDCOPY IT IS FOR INFORMATION USE ONLY AND THEREFORE IS NOT SUBJECT TO UPDATING CONTROLS. ALWAYS REFER TO SOLIDWORKS VIEWER FOR LATEST ISSUE

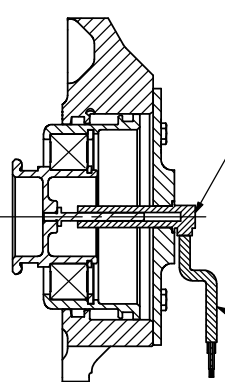
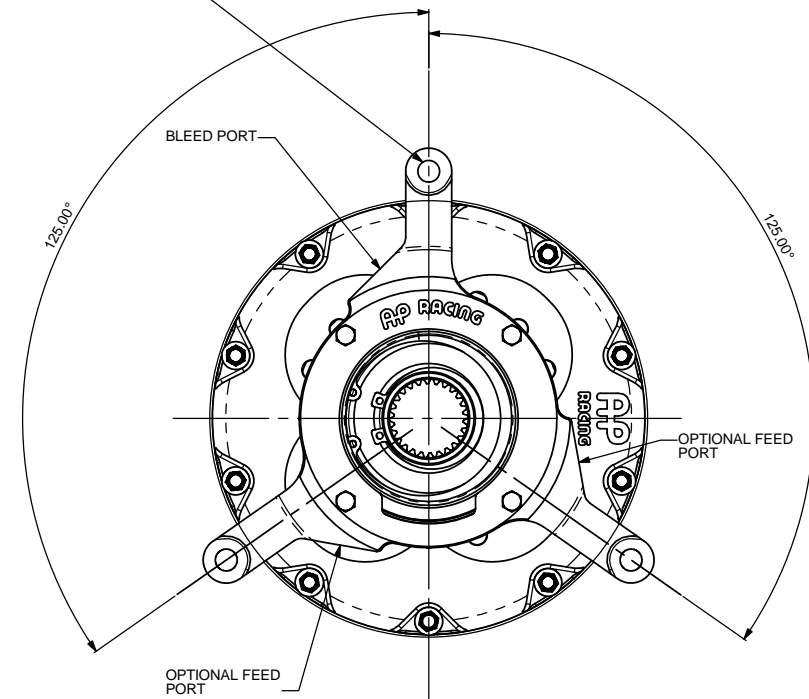


THIS DRAWING IS CONFIDENTIAL AND IS SUPPLIED ON THE EXPRESS CONDITION THAT IT SHALL NOT BE LOANED OR COPIED OR DISCLOSED TO ANY OTHER PERSON OR USED FOR ANY OTHER PURPOSE WITHOUT THE WRITTEN CONSENT OF AP RACING LTD.

© AP Racing Ltd. 2002
 AP Racing
 Wheler Road
 Coventry
 CV3 4LB
 Tel: +44 024 7663 9595 e-mail: sales@apracing.co.uk
 Fax: +44 024 7663 9559 Web site: HTTP://www.apracing.com

OPTIONAL SLAVE CYLINDER DETAIL. (SEE CP6245-1CD FOR FULL DETAILS)

3 HOLES Ø8.20/8.10 SPACED AS SHOWN.



AN OPTIONAL LVDT KIT IS AVAILABLE (FOR USE WITH CONCENTRIC DRIVE AND INPUT SHAFTS.) SEE INSTALLATION DRAWING CP6245-1CD

NOTE:
 AN LVDT KIT REQUIRES A DIFFERENT RELEASE FULCRUM TO BE SUPPLIED IN THE CLUTCH ASSEMBLY. PLEASE ADD THE SUFFIX '-DT' TO THE BASE PART NUMBER AS SPECIFIED ON SHEET 1.

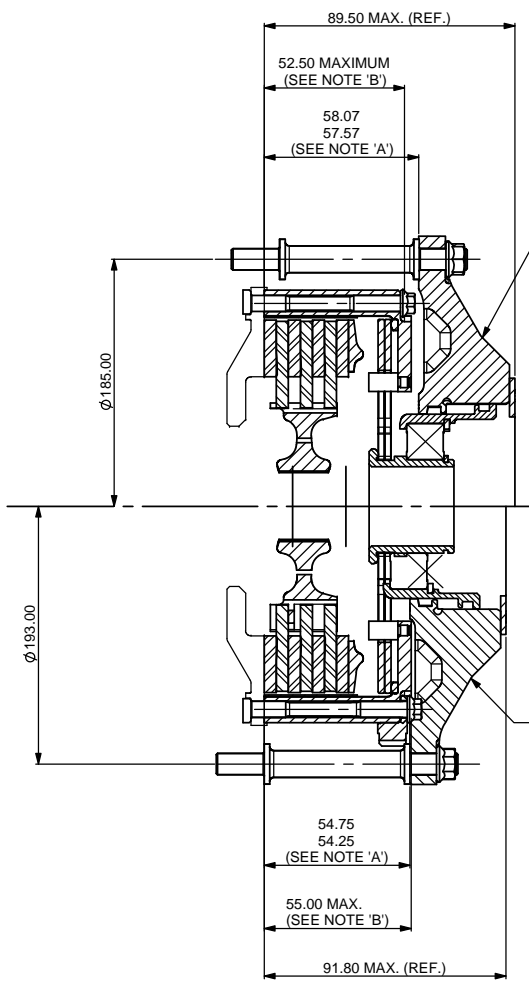
NOTE 'A'
 THIS DIMENSION MUST BE MAINTAINED BY THE USE OF CORRECT LENGTH STUDS/SLEEVES TO ENSURE PROPER FUNCTIONING OF THE RELEASE MECHANISM.

NOTE 'B'
 IN THE CASE OF 'OVER LONG' MOUNTING STUD PROTRUSION THROUGH NUT SOME MACHINING OF STUD LENGTH MAY BE REQUIRED.

PLEASE CHECK SLAVE CLEARANCE

SLAVE CYLINDER SET-UP HEIGHT FROM NEW MUST MAKE ALLOWANCES FOR MAXIMUM CARBON STACK WEAR-IN (1.50 mm) AND MAXIMUM RELEASE TRAVEL (4.00mm).

CLUTCH ASSEMBLY WITHOUT STARTER RING GEAR



OPTIONAL SLAVE CYLINDER CP6245-8 (NON STARTER RING) SEE INSTALLATION DRAWING CP6245-1CD

OPTIONAL SLAVE CYLINDER CP6245-7 (STARTER RING) SEE INSTALLATION DRAWING CP6245-1CD

CLUTCH ASSEMBLY WITH STARTER RING GEAR

Issue No.	Alterations		Zone	Initials
	Date & No.	Particulars		
4	22/09/04 C2534	INSTALLATION DRAWING REDRAWN TO LATEST FORMAT BH REFERENCE ADDED.	#	AW/S
5	05/10/04	SHEET 2: DETAIL N ADDED. R5.75 MIN. ADDED. 44.50° WAS 45°	#	JG
6	18/10/04 C2551	SHEET 2: FLYWHEEL HOLE SIZE Ø6.012/6.000 WAS Ø6.15/6.05	#	JG
7	03/11/04 C2441	LVDT CHANGE (SHEET 4)	#	JG
8	17/01/05 C2532	BE WAS BH CP7223-13 WAS CP6504-7 CP7223-14 WAS CP6504-8	#	JG
9	21/02/05 C2324	COVER MACHINING CHANGED IN LINE WITH LATEST COMPONT.	#	JG
10	26/04/05 C2670	GH SPEC ADDED.	#	JG
11	07/11/05 RAC21284	TORQUE CAPACITY: OH - 1142 WAS 1042 BE - 1333 WAS 1215	#	JG
12	05/12/05 C2796	'08' OPTION AND TITANIUM PRESSURE PLATE KITS ADDED.	#	JG
13	31/10/06 C3005	STEEL COVER WEIGHT AND INERTIA 'S' ADDED STEEL SECTION VIEW ADDED	#	JG
14	01/11/06 C3005	Ti cover weight and inertia added.	-	JG
15	24/01/07 C3039	BOLT LANDS: 6.90/6.80 WAS 6.30/6.20	#	JG
16	01/02/07	INCREASED DRIVE AREA DETAIL ADDED.	#	JG
17	08/01/08	EQUI-SPACED REMOVED FROM 3 HOLE NOTE (SHEET 4)	K2	JG
18	30/04/09	BE PRESSURE PLATE KIT RANGE REVISION	#	JG
19	25/06/09	SUH: OH 37.57/36.33 WAS 36.48 29.72 WAS 26.26 BE 37.55/36.25 WAS 36.48 32.32 WAS 36.48 GH 37.57/36.33 WAS 36.48 29.72 ADDED.	#	JG
20	01/06/11	CP6504-8SS (PRESSURE PLATE KIT) DESCRIPTION CORRECTION.	#	JG
21	28/04/16	'GH' SPECIFICATION: WEARING 1.25 WAS 1.50	#	JG

SCALE 1:1 SHEET 4 OF 4

DRAWN: Jeremy Govan

APPROVED:

DERIVED FROM: cp7223-1cd

TITLE:
 Ø140mm (5.5") CARBON / CARBON
 PULL TYPE CLUTCH INSTALLATION

DRG NO.: cp7223-1cd