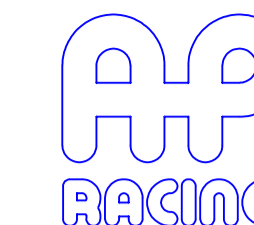


A1 INSTALLATION DRAWING

IF THIS DOCUMENT IS PRINTED IN HARDCOPY, IT IS FOR INFORMATION USE ONLY AND THEREFORE IS NOT SUBJECT TO UPDATING CONTROLS. ALWAYS REFER TO SOLIDWORKS VIEWER FOR LATEST ISSUE



THIS DRAWING IS CONFIDENTIAL AND IS SUPPLIED ON THE EXPRESS CONDITION THAT IT SHALL NOT BE LOANED OR COPIED OR DISCLOSED TO ANY OTHER PERSON OR USED FOR ANY OTHER PURPOSE WITHOUT THE WRITTEN CONSENT OF AP RACING LTD.

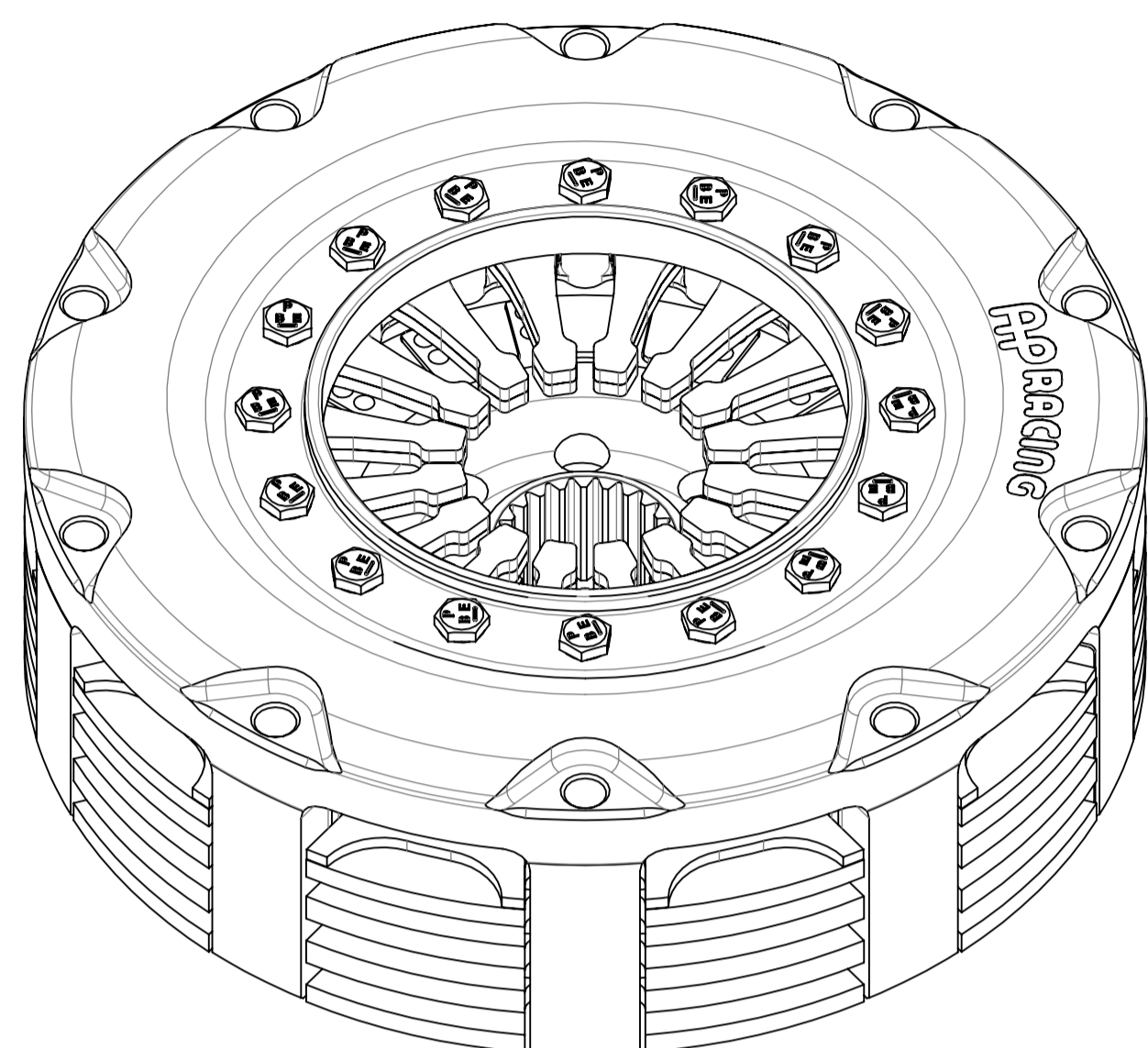


AP Racing
Wheler Road
Coventry
CV3 4LB

Tel: +44 (0) 24 7663 9595
Fax: +44 (0) 24 7663 9559
e-mail: engineering@apracing.co.uk
Web site: <http://www.apracing.com>

© AP Racing Ltd. 2005

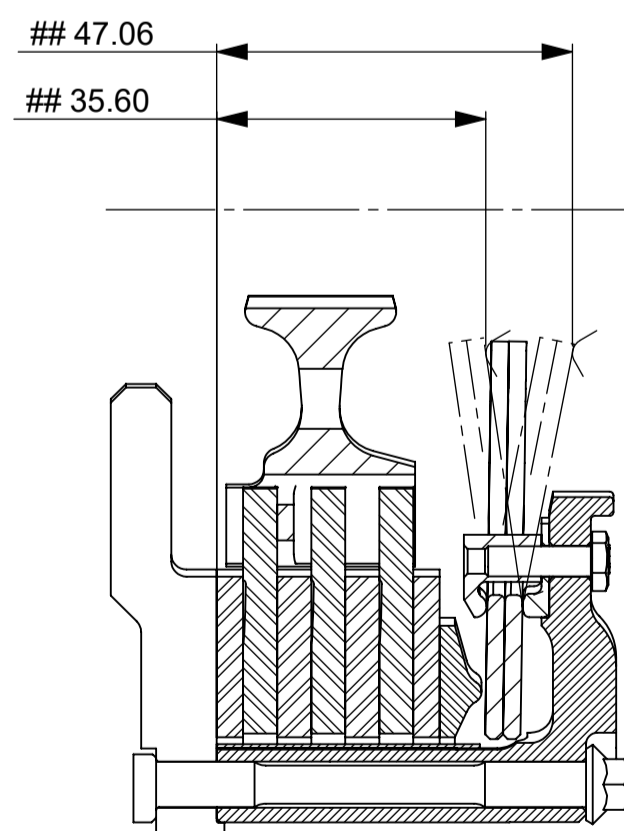
CP6913 Ø140mm (5.5") CARBON / CARBON CLUTCH ASSEMBLY INCLUDING AN OPTIONAL CUSHION PRESSURE PLATE SYSTEM (CPS)



HUB PART No. SPLINE
CP5143-104S 1.16" x 26
CP5143-153S 1.25" x 29

HUBS ARE AVAILABLE WITH OTHER SPLINE SIZES. CONTACT AP RACING FOR DETAILS.

FOR HUB ENVELOPE SEE SHEET 2.

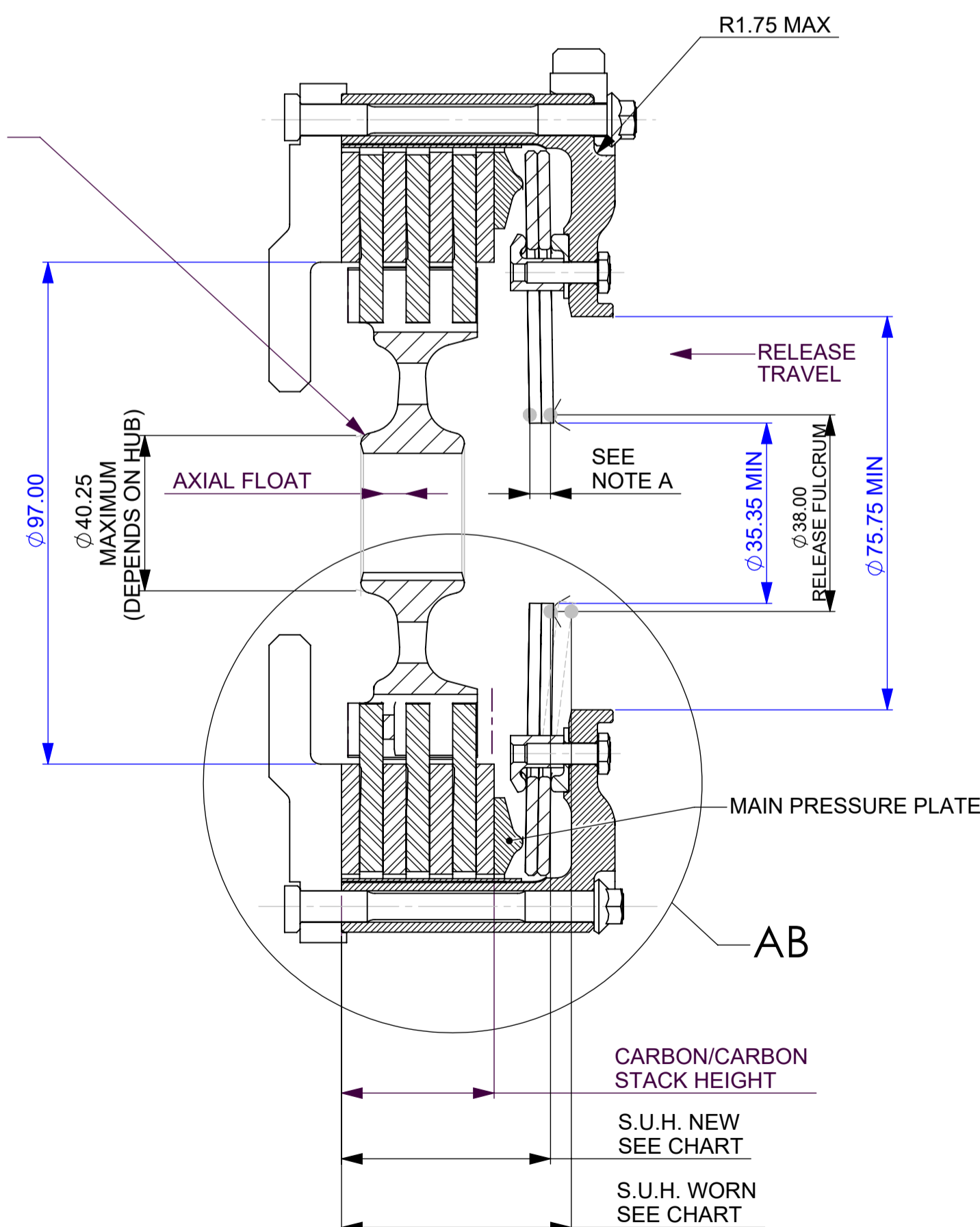


DETAIL AB

BEARING POSITION

TO ENSURE ADEQUATE RELEASE TRAVEL AND CLUTCH LIFE THESE LIMITS HAVE BEEN CALCULATED USING AN ADDITIONAL 20% RELEASE TRAVEL AND 50% MORE WEAR IN THAN SPECIFIED. (CALCULATED FROM THE FRICTION FACE.)

THESE FIGURES COVER THE FULL RANGE OF CLUTCHES IN THE CP6913 FAMILY.



NOTE A

RELEASE TRAVEL TO BE LIMITED TO 4.0mm MAX.

SEE SHEET 2 FOR VIEW OF STEEL COVER VERSION

CP6913 CLUTCH FAMILY

MAXIMUM DYNAMIC TORQUE CAPACITY				1333	1142	
(Nm)						
(ft.lb)				982	842	
RELEASE LOAD						
Max. Peak Worn (N)				8875	7800	
Max. Peak New (N)				6850	5800	
WEAR IN (See Note)						
				1.25	1.25	
Set Up Height New						
				40.95	40.75	
Set Up Height Worn						
				44.65	44.45	
(Set Up Height is calculated from the flywheel friction face.)						
Release Ratio						
				2.899	2.899	
PERFORMANCE SUFFIX						
	CM	CE	OM	OE	GH	OH
For Reference						
Diaphragm Spring Rate	CRV	CRV	ORA	ORA	GRY	ORA
Clutch Ratio	MHR	EHR	MHR	EHR	HiR	HiR

MATERIAL SUFFIX	COVER MATERIAL	PRESSURE PLATE MATERIAL	CARBON / CARBON TYPE
01	ALUMINIUM	STEEL	STANDARD DUTY
02	ALUMINIUM	STEEL	HEAVY DUTY
03	STEEL	STEEL	HEAVY DUTY
05	TITANIUM	STEEL	HEAVY DUTY

FLYWHEEL TYPE

	SUFFIX	COMMENTS
STANDARD FLAT FLYWHEEL	FN	FOR INSTALLATION DATA SEE SHEET 2
FLAT FLYWHEEL WITH CPS	FP	FOR INSTALLATION DATA SEE SHEET 2 AND FLYWHEEL DETAILS SEE SHEET 3

WEAR IN

THIS CLUTCH HAS BEEN DESIGNED FOR THE WEAR IN INDICATED ABOVE, WHICH MUST BE COMPENSATED FOR BY USING PRESSURE PLATE "SHIMS" OR FULCRUM RINGS FROM THE KITS DETAILED BELOW. THE MAXIMUM CARBON STACK WEAR FOR THIS ASSEMBLY IS 6.00mm AXIAL HUB FLOAT MUST BE MAINTAINED

	CM & OM	CE & OE	GH & OH
STANDARD KIT 0.50 - 4.50 IN 0.50 STEPS (PRESSURE PLATES)			CP6514-4SS
INTERMEDIATE KIT 0.25 - 4.75 IN 0.50 STEPS (PRESSURE PLATES)			CP6514-5SS
STANDARD KIT 0.50 - 4.50 IN 0.50 STEPS (FULCRUM RINGS)			CP6913-7
INTERMEDIATE KIT 0.25 - 4.75 IN 0.50 STEPS (FULCRUM RINGS)			CP6913-8

CLUTCH ASSY PART No.	COMPLETE ASSY WEIGHT (EXCL. STARTER RING)	COMPLETE ASSY INERTIA (EXCL. STARTER RING)	DRIVE PLATES AND HUB INERTIA
CP6913-OH02-FN	2.275 Kg	0.00756 Kg.m ²	0.001214 Kg.m ²
CP6913-OH03-FN	2.810 Kg	0.01020 Kg.m ²	0.001214 Kg.m ²
CP6913-OH05-FN	2.595 Kg	0.00901 Kg.m ²	0.001214 Kg.m ²
CP6913-GH02-FN	2.295 Kg	0.00796 Kg.m ²	0.001214 Kg.m ²
CP6913-GH03-FN	2.830 Kg	0.00836 Kg.m ²	0.001214 Kg.m ²
CP6913-OH02-FP	2.320 Kg	0.007677 Kg.m ²	0.00132 Kg.m ²
CP6913-GH02-FP	2.320 Kg	0.007677 Kg.m ²	0.00132 Kg.m ²

Issue No.	Alterations		Zone	Initials
	Date & No.	Particulars		
1	31/01/01 C1793	FIRST ISSUE	#	GS
2	28/02/01	COVER CHANGED ON DRAWING. TO INCLUDE STARTER SCALLOPS. RELEASE FULC. DIA. CHANGED FROM Ø39.0 TO Ø38.0	E9	GS
3	07/03/01	OPTIONAL STARTER RING ADDED TO DRG. WEIGHT & INERTIA FIGURES UPDATED.	#	GS
4	11/11/02 C1903	ASSEMBLY NUMBER WAS CP6913TACRV.	#	JG
5	05/02/03	STARTER RING LOCATION INFORMATION ADDED. 161.95/161.90 WAS 161.95 MAX.	D2 D9 F10	JG
6	04/06/04 C2455	CP691-OH02-FN TI COVER VERSION ADDED TO DRAWING.	#	GS
7	15/12/04 C2576	STEEL VERSION ADDED. R6.90/6.80 WAS R6.30/6.20	D1	ROG
8	02/11/05	'HUB FLOAT' ADDED TO DIM'S: 28.48 MAX, 26.23 MAX, 0.65 MIN, 2.90 MIN Ø34.25 WAS Ø30.25	F6 E6	GS
9	07/11/05 RAC21284	TORQUE CAPACITY: OH - 1142 WAS 1042.	#	JG
10	04/01/06 C2811	CP6913-GH02-FN ADDED.	#	JG
11	16/01/06	GH VERSION: INERTIA CORRECTION.	#	JG
12	10/09/06 C2811	DRAWING LAYOUT UPDATED TO INCLUDE CP6913-OH02-FC DETAILS (PREVIOUSLY ON DRAWING CP6913-2CD). SIZE WAS A2, SHEET 3 ADDED.	#	JAS
13	31/10/07 C3255	RELEASE LOADS : GH : 8875 WAS 880, 6800 WAS 680 OH : 8150 WAS 740, 5000 WAS 350	#	JG
14	02/12/08 C3539	WEIGHT AND INERTIA FIGURES ADDED FOR 'GH03' OPTION	#	JG
15	16/07/09	TIGHTENING TORQUE ADDED TO MOUNTING STUDS (SHEET 2)	#	JG
16	18/11/09 C3765	RELEASE LOADS CORRECTED SEE ISSUE 13	#	JG
17	11/02/11	'SS' ADDED TO CP6514-4 AND -5 PRESSURE PLATE KITS	#	JG
18	19/06/17	SUFFIX 'FC' REPLACED WITH 'FP' IN DRAWING TABLE. CLUTCH ASSY PN UPDATED.	F12 WUB B11	
19	11/01/18 C5217_01	HUB CP5143-153S ADDED MAX HUB BOSS Ø40.25 WAS Ø34.25	G3 E4	BJP
20	15/08/18 C5282	CP6913-OH02-FP SECTION ADDED (SHEET 2)	C2	OSM
21	11/11/19 RAC23360	INTERMEDIATE PRESSURE PLATE KIT RANGE WAS 0.25 - 4.25 INTERMEDIATE FULCRUM RING KIT RANGE WAS 0.25 - 4.25	D11 E11	CGT

SCALE 1:1 SHEET 1 OF 3

DRAWN GRAHAME SMITH

APPROVED

DERIVED FROM

TITLE
Ø140.0mm C/C PUSH TYPE
3 PLATE INSTALLATION DRG

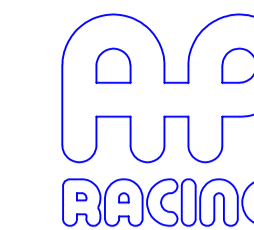
DRG NO. CP6913-1CD

A1 INSTALLATION DRAWING

IF THIS DOCUMENT IS PRINTED IN HARDCOPY, IT IS FOR INFORMATION USE ONLY AND THEREFORE IS NOT SUBJECT TO UPDATING CONTROLS. ALWAYS REFER TO SOLIDWORKS VIEWER FOR LATEST ISSUE



THIS DRAWING IS CONFIDENTIAL AND IS SUPPLIED ON THE EXPRESS CONDITION THAT IT SHALL NOT BE LOANED OR COPIED OR DISCLOSED TO ANY OTHER PERSON OR USED FOR ANY OTHER PURPOSE WITHOUT THE WRITTEN CONSENT OF AP RACING LTD.



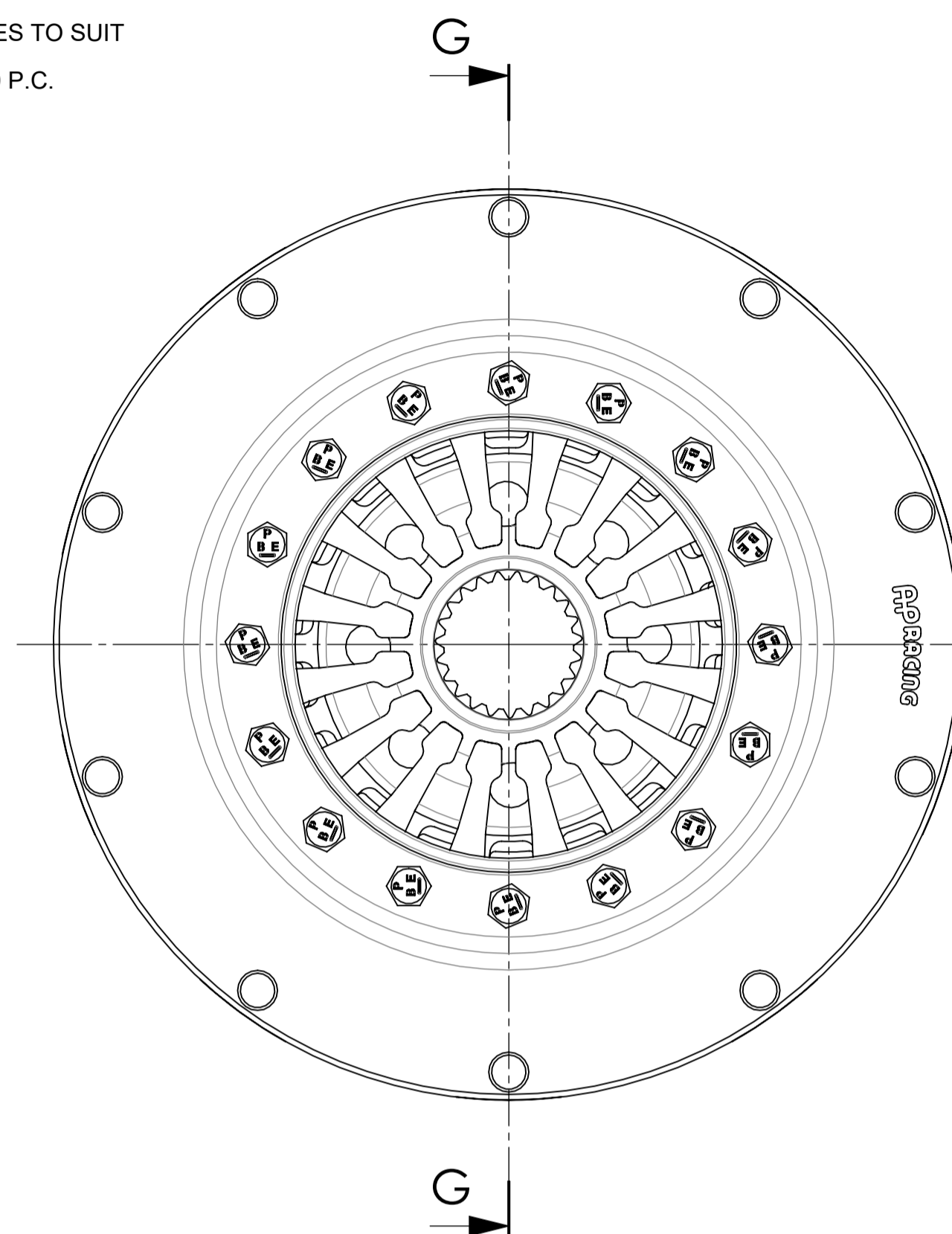
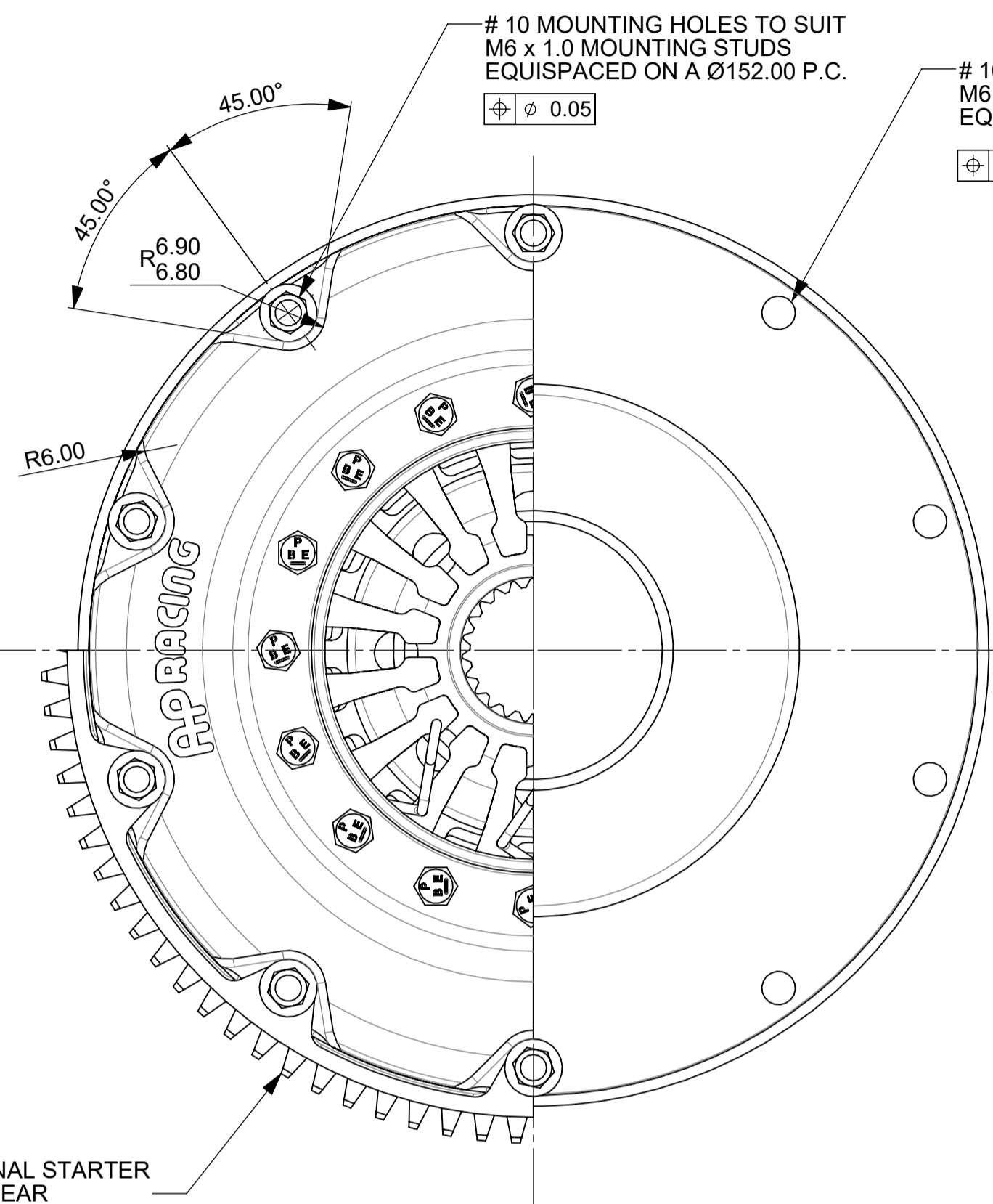
AP Racing
Wheler Road
Coventry
CV3 4LB

Tel: +44 (0) 24 7663 9595
Fax: +44 (0) 24 7663 9559
e-mail: engineering@apracings.co.uk
Web site: <http://www.apracings.com>

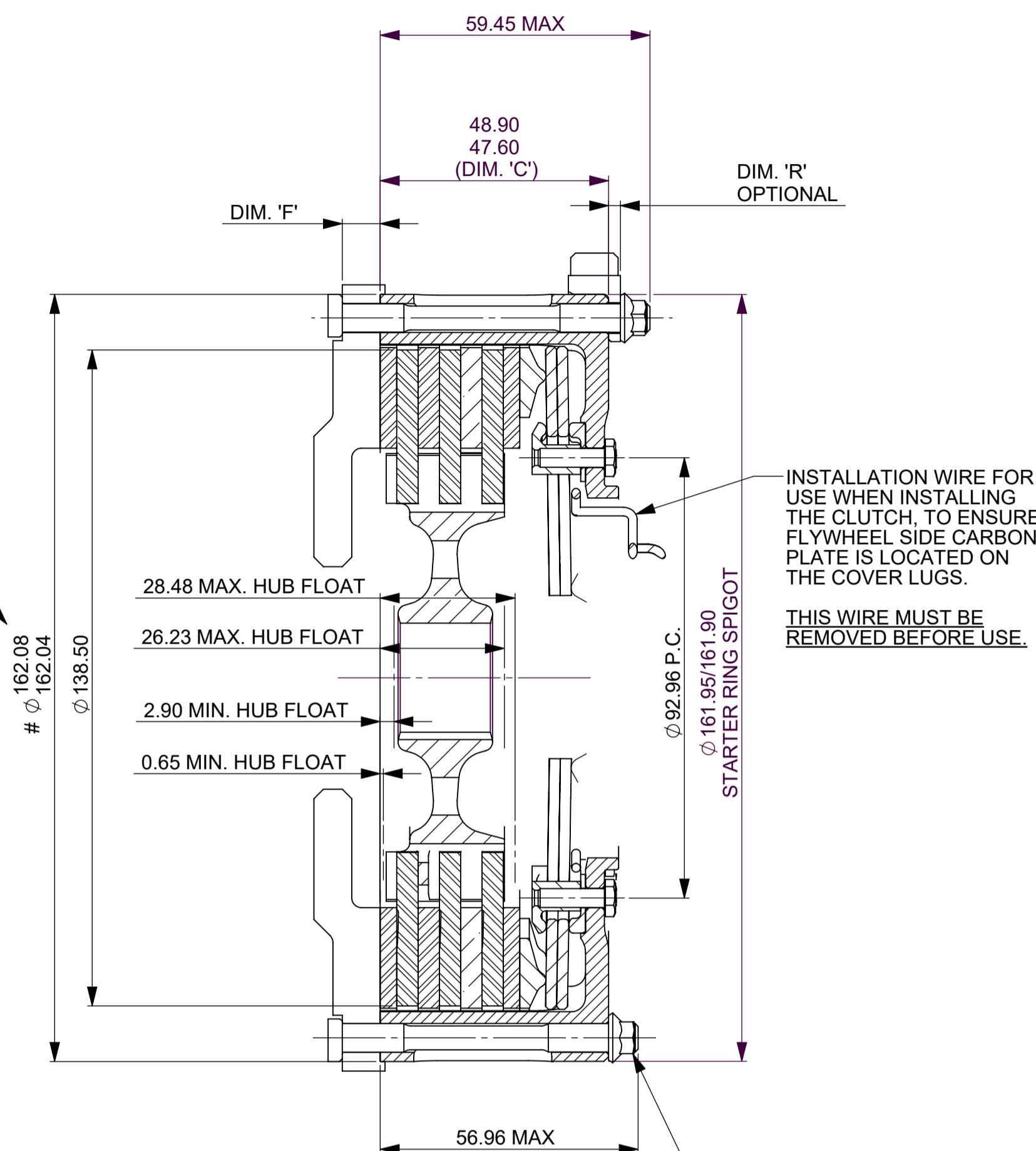
© AP Racing Ltd. 2005

Alterations			Zone	Initials
Issue No.	Date & No.	Particulars		
-	-	SEE SHEET 1 FOR ISSUE INFORMATION.	-	-

CP6913-0H03-FN STEEL COVER VERSION



THE CLUTCH SPIGOT IS DESIGNED TO BE THIS DIAMETER WHEN BOLTED TO THE FLYWHEEL. BEFORE FITTING (WITH THE INSTALLATION WIRE IN PLACE) THIS DIA. MAY BE SLIGHTLY REDUCED.



SECTION G-G

RECOMMENDED CLUTCH MOUNTING
M6 x 1.0, CP4703 FAMILY STUD AND
KAYLOCK NUT.
TIGHTENING TORQUE: 10Nm (7.5 lb ft)

NOTES:

ALL INSTALLATION DIMENSIONS ARE IDENTICAL TO ALUMINIUM AND TITANIUM COVER VERSIONS APART FROM THE COVER HAVING A FLAT TOP

RECOMMENDED CLUTCH MOUNTING :
(FOR ALL TYPES OF ASSEMBLY)
M6 x 1.0, CP4703 FAMILY STUD AND
KAYLOCK NUT.
TIGHTENING TORQUE : 10Nm (7.5 ft.lb)

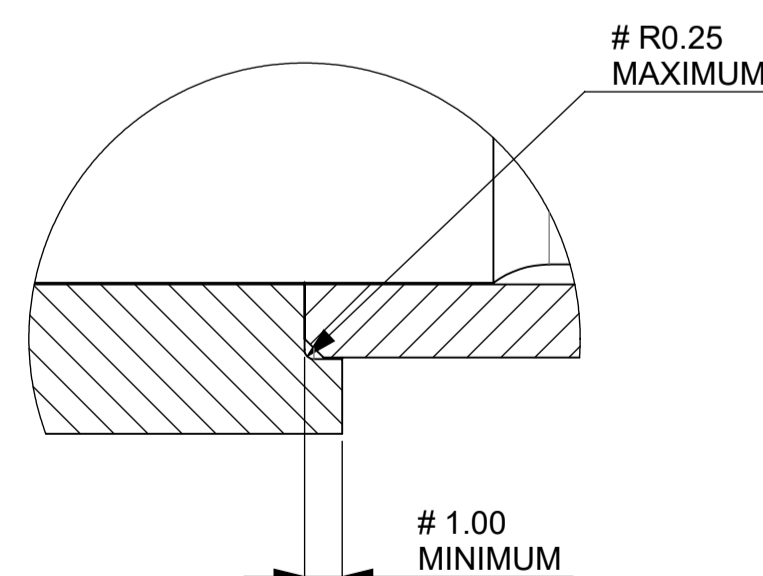
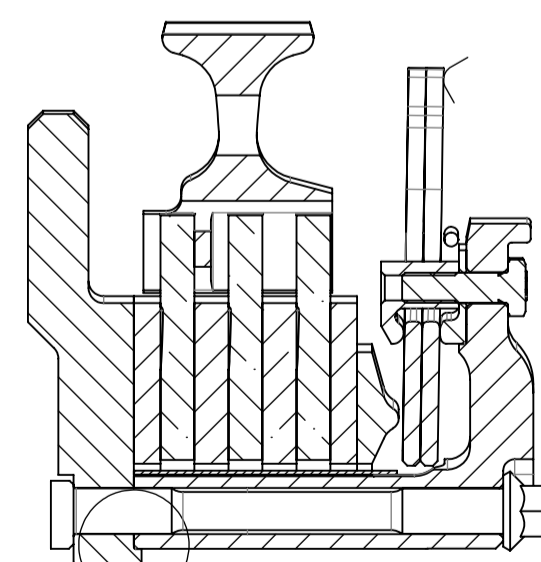
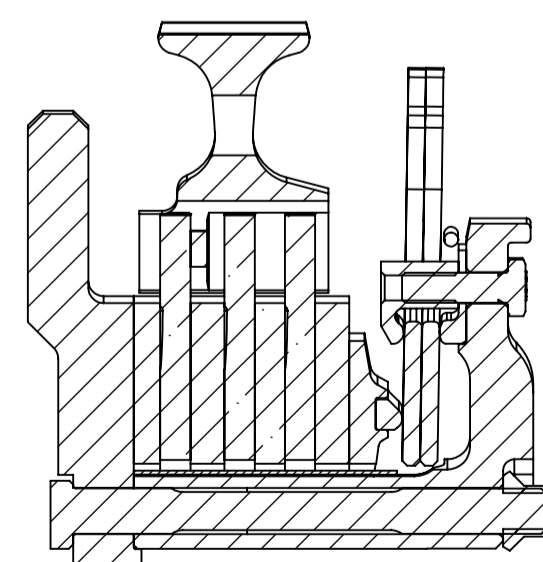
LENGTH OF STUD REQUIRED TO BE CALCULATED THUS :

STUD LENGTH =
DIMENSIONS 'C' + 'F' + ('R' OPTIONAL) + NUT

THIS CALCULATED LENGTH TO BE ROUNDED UP TO THE NEXT AVAILABLE STANDARD STUD LENGTH.

= FLYWHEEL DIMENSIONS.

CP6913-0H02-FP CUSHIONED PRESSURE PLATE VERSION



SECTION AA
VIEW OF FLYWHEEL SPIGOT
SCALE 5 : 1

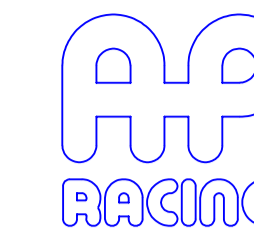
SCALE 1:1	SHEET 2 OF 3
DRAWN	GRAHAME SMITH
APPROVED	
DERIVED FROM	
TITLE	
Ø140.0mm C/C PUSH TYPE 3 PLATE INSTALLATION DRG	
DRG NO.	CP6913-1CD

A1 INSTALLATION DRAWING

IF THIS DOCUMENT IS PRINTED IN HARDCOPY, IT IS FOR INFORMATION USE ONLY AND THEREFORE IS NOT SUBJECT TO UPDATING CONTROLS. ALWAYS REFER TO SOLIDWORKS VIEWER FOR LATEST ISSUE



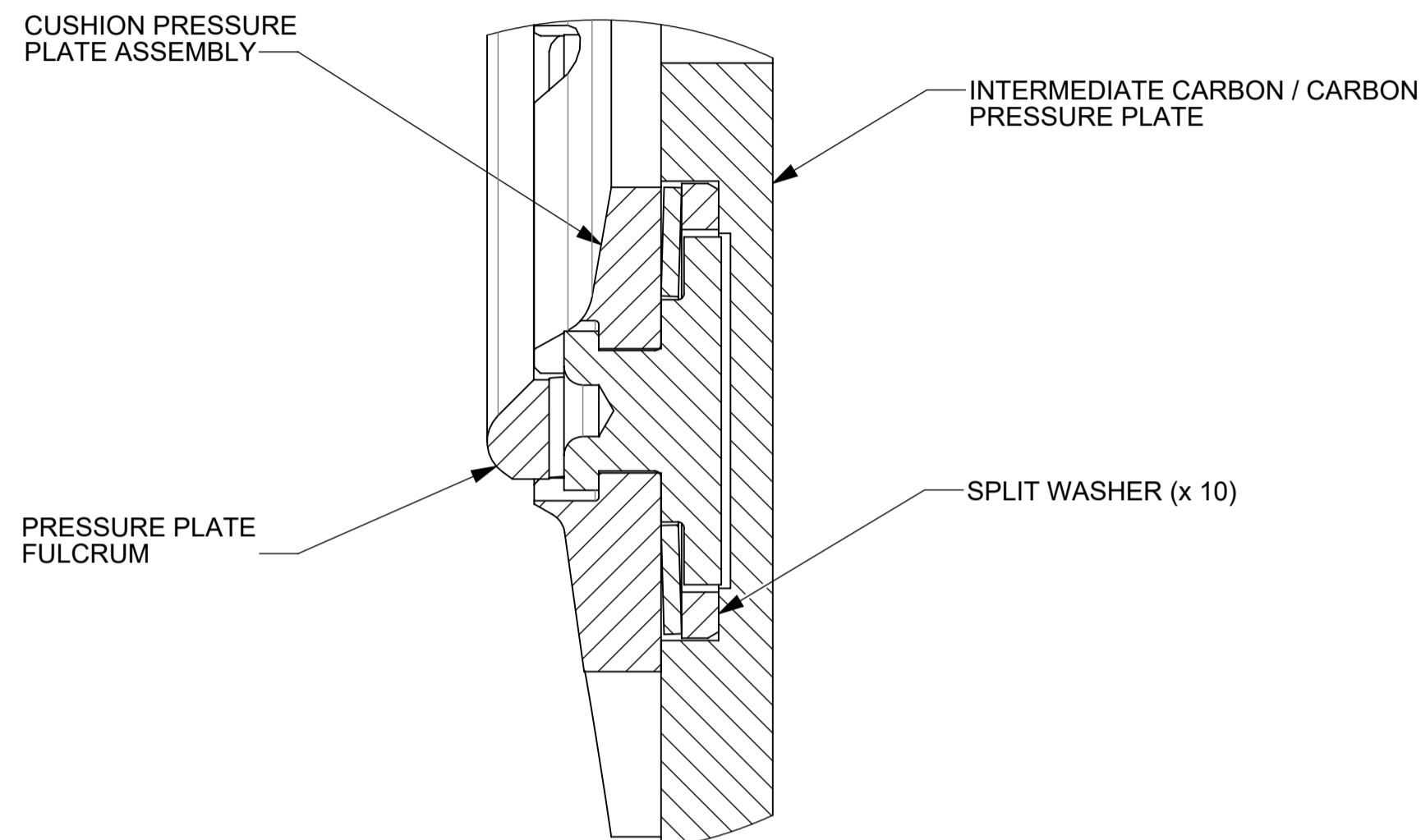
THIS DRAWING IS CONFIDENTIAL AND IS SUPPLIED ON THE EXPRESS CONDITION THAT IT SHALL NOT BE LOANED OR COPIED OR DISCLOSED TO ANY OTHER PERSON OR USED FOR ANY OTHER PURPOSE WITHOUT THE WRITTEN CONSENT OF AP RACING LTD.



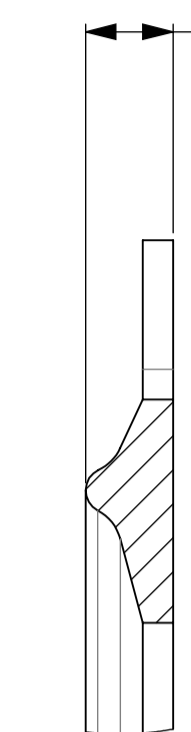
AP Racing
Wheler Road
Coventry
CV3 4LB

Tel: +44 (0) 24 7663 9595
Fax: +44 (0) 24 7663 9559
e-mail: engineering@apracing.com
Web site: <http://www.apracing.com>

© AP Racing Ltd. 2005

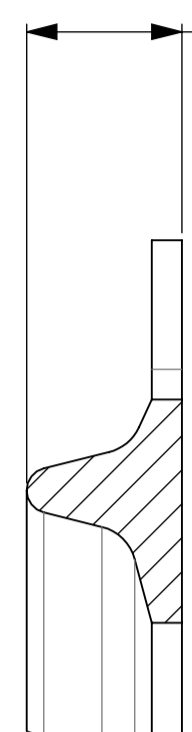


0.00mm
AS SUPPLIED WITH
THEN NEW CLUTCH
ASSEMBLY



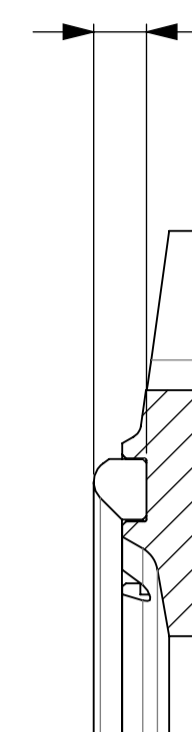
DETAIL R
SCALE 2 : 1

+Y'mm
MAXIMUM
CARBON / CARBON
WEAR COMPENSATION



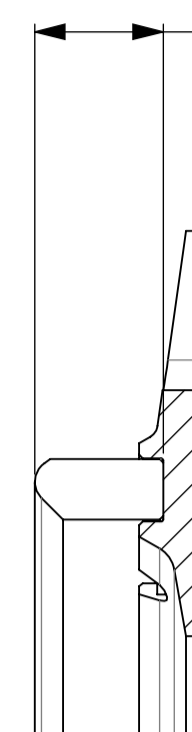
DETAIL T
SCALE 2 : 1

0.00mm
AS SUPPLIED WITH
THEN NEW CLUTCH
ASSEMBLY



DETAIL N
SCALE 2 : 1

+Y'mm
MAXIMUM
CARBON / CARBON
WEAR COMPENSATION



DETAIL P
SCALE 2 : 1

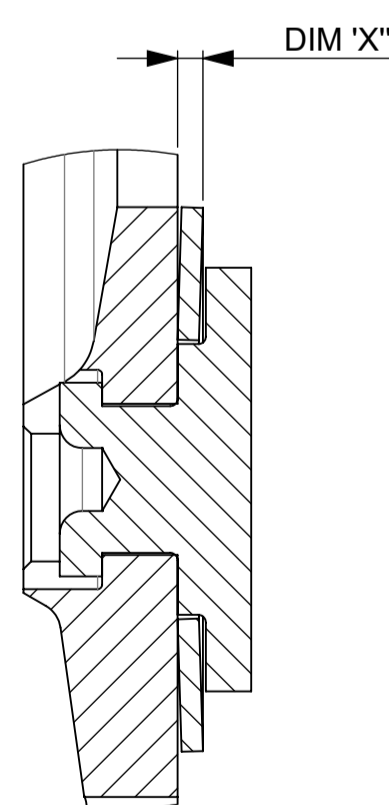
FOR ASSEMBLIES WITHOUT CUSHIONING
WEAR COMPENSATION IS ACHIEVED BY REPLACING THE PRESSURE PLATE AS SHOWN ABOVE. SEE SHEET ONE FOR KIT PART NUMBERS AND INCREMENT DETAILS (PRESSURE PLATES).

FOR ASSEMBLIES WITH CUSHIONING
WEAR COMPENSATION IS ACHIEVED BY REPLACING THE PRESSURE PLATE FULCRUM RING AS SHOWN ABOVE. SEE SHEET ONE FOR KIT PART NUMBERS AND INCREMENT DETAILS (FULCRUM RINGS).

FITTING OF SPLIT WASHERS

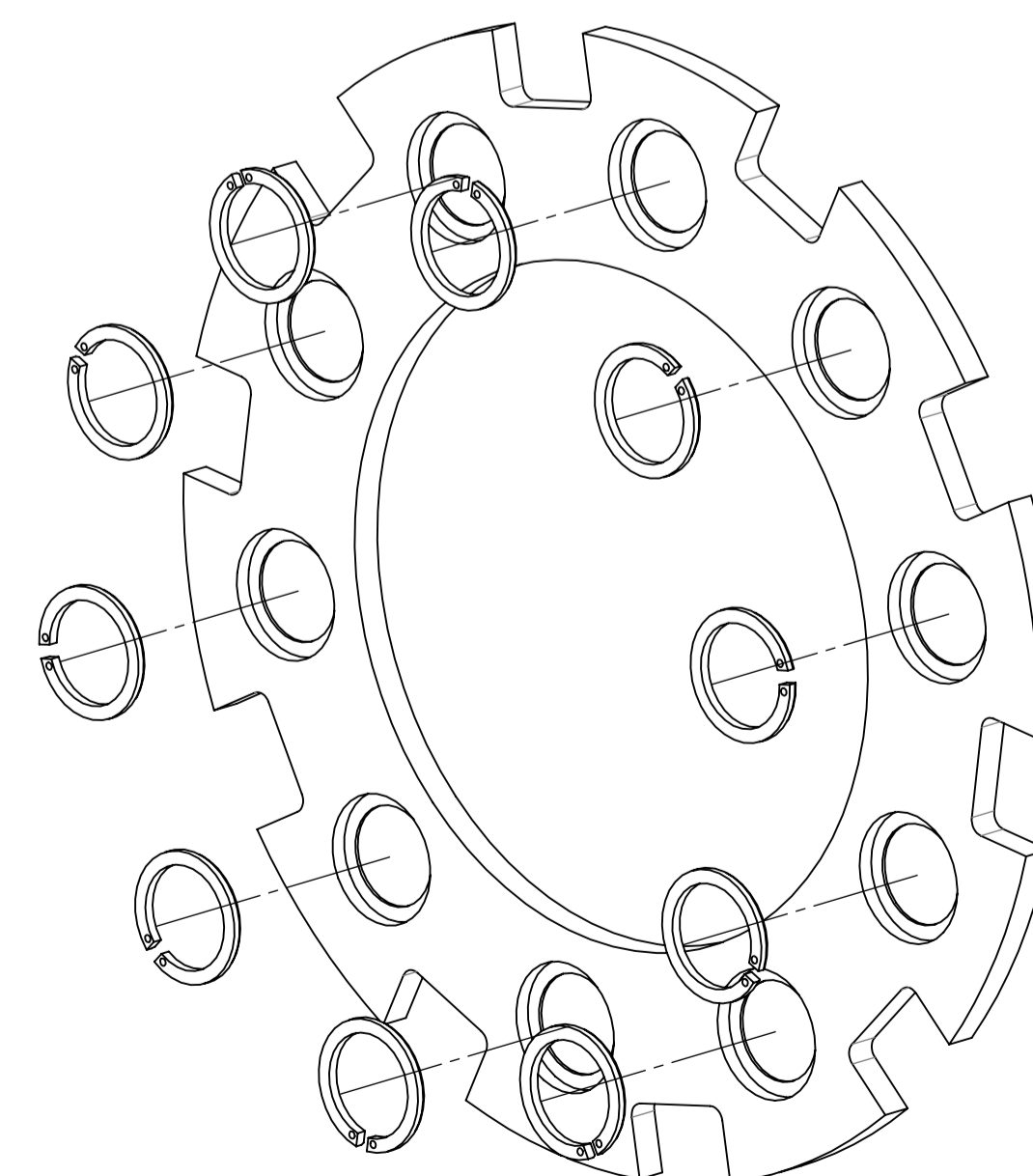
COMPRESS THE SPLIT WASHER USING PLIERS AND FIT INTO THE LARGER OF THE RECESSED COUNTER BORES IN THE CARBON / CARBON INTERMEDIATE PRESSURE PLATE. CHAMFER FIRST ENSURE THE SPLIT WASHER ARE FLUSH WITH THE BOTTOM OF THE POCKET

CUSHIONING REPLACEMENT CRITERIA



WITH TIME AND USE THE CUSHIONING EFFECT WILL DETERIORATE AND COMPONENTS SHOULD BE SERVICED WITH THE ABOVE KIT WHEN EITHER THE BELLEVILLES BECOME LOOSE OR WHEN DIMENSION 'X' FALLS BELOW 1.00, TAKEN AS THE AVERAGE OF 4 EQUALLY SPACED MEASUREMENTS AROUND THE CIRCUMFERENCE OF THE BELLEVILLE.

THIS TYPE OF ASSEMBLY IS SUPPLIED COMPLETE FROM AP RACING. SERVICE IS LIMITED TO THE FITMENT OF FULCRUM RING SHIMS TO COMPENSATE FOR CLUTCH WEAR.



Alterations			
Issue No.	Date & No.	Particulars	Zone
-	-	SEE SHEET 1 FOR ISSUE INFORMATION.	-

SCALE 1:1 SHEET 3 OF 3

DRAWN GRAHAME SMITH

APPROVED

DERIVED FROM

TITLE

Ø140.0mm C/C PUSH TYPE

3 PLATE INSTALLATION DRG

DRG NO. CP6913-1CD