

PUBLICATION P12.131

ISSUE 3

If this document is printed in hardcopy, it is for information use only and therefore is not subject to updating controls. Always refer to viewer for latest issue.



THIS DRAWING IS CONFIDENTIAL AND IS SUPPLIED ON THE EXPRESS CONDITION THAT IT SHALL NOT BE LOANED OR COPIED OR DISCLOSED TO ANY OTHER PERSON OR USED FOR ANY OTHER PURPOSE WITHOUT THE WRITTEN CONSENT OF AP RACING LTD.



AP Racing
Wheler Road
Coventry
CV3 4LB

Tel: +44 024 7663 9595
Fax: +44 024 7663 9599

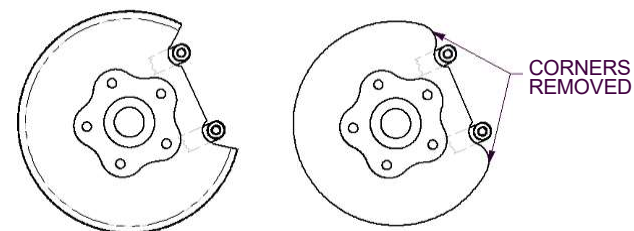
e-mail: sales@apracings.co.uk
Web site: HTTP://www.apracings.com

© AP Racing Ltd. 2015

BMW E46 M3 REAR Kit KIT NUMBER CP5144-1003		
Ref	DESCRIPTION	QTY
1	CALIPER RIGHT HAND CALIPER LEFT HAND	1 1
2	VENTED DISC& BELL RIGHT HAND VENTED DISC & BELL LEFT HAND	1 1
3	PAD SET (4)	1
4	ANTI RATTLE CLIP	2
5	BANJO BOLT	2
6	GASKET	4
7	RETAIN OE BRAKE HOSE	-
8	M10 MOUNTING BOLT	4
9	∅20.5 MOUNTING WASHER	4
10	M10 NUT	4
11	UPRIGHT LUG REPRESENTATION	-
12	PAD RETAINER BOLT	2
13	NYLON ARMOUR	2

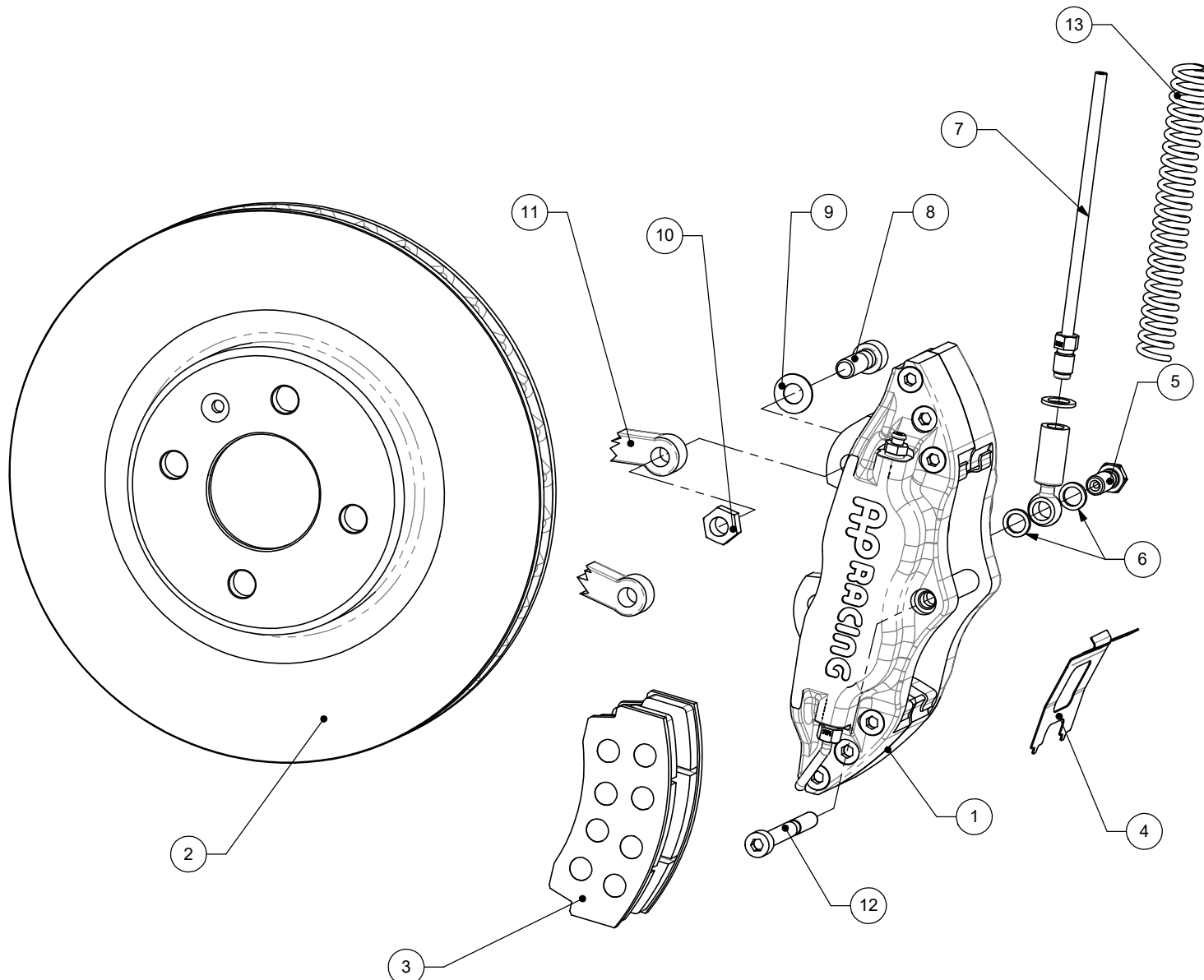
BRAKE DISK WEAR	
NEW	MIN WORN
26.00mm	24.50mm

Tightening Torques	
Part Ref #	Torque
Bolt & Nut- Ref 8/10	58NM
Banjo Bolt - Ref 5	25NM
Caliper Bleed Screws	17NM
Pad Retainer Bolts - Ref 12	13NM



SPLASH GUARD BEFORE MODIFICATION SPLASH GUARD AFTER MODIFICATION

MODIFY SPLASH GUARD BY REMOVING THE CORNERS AS SHOWN IN THE DIAGRAM ABOVE TO ALLOW CLEARANCE FOR LARGER CALIPER.



PLEASE RETAIN THIS SHEET FOR FUTURE REFERENCE

THIS IS A PICTORIAL VIEW FOR REFERENCE ONLY. SOME PARTS MAY VARY FROM THOSE SUPPLIED. AP RACING RESERVE THE RIGHT TO CHANGE COMPONENTS WITHOUT PRIOR NOTICE.
DRAWN : Joe Hartog