

# B1 INSTALLATION DRAWING

THIS DOCUMENT IS PROVIDED IN AS IS FOR INFORMATION USE ONLY AND THEREFORE IS NOT SUBJECT TO UPGRADE CONTROLS. ALWAYS REFER TO SOLIDWORKS VIEWER FOR LATEST ISSUE

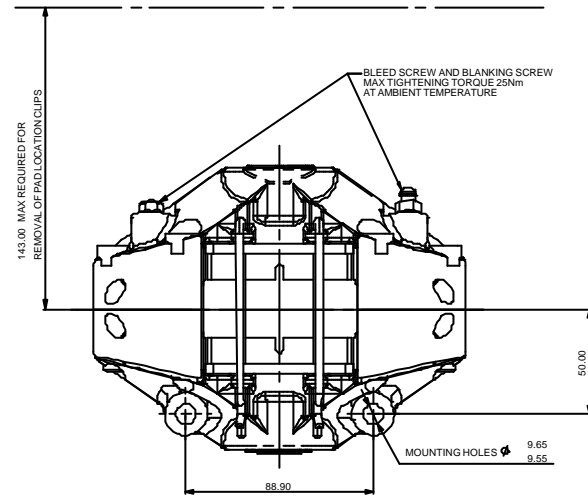
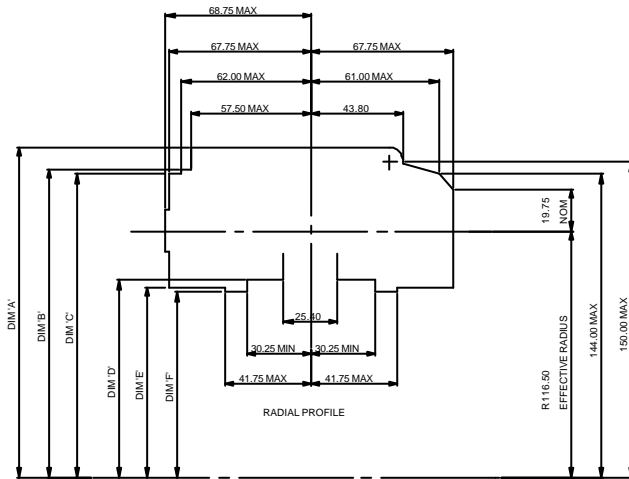
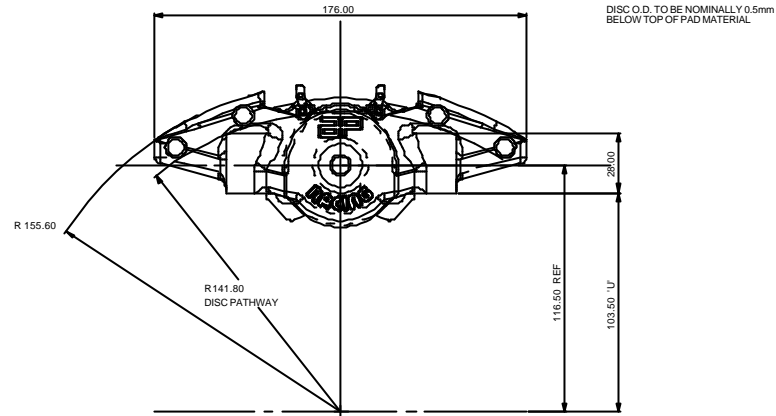
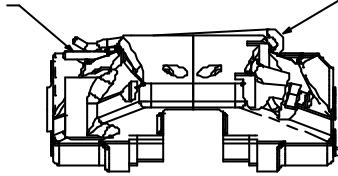
FIRST ANGLE PROJECTION

THIS DRAWING IS CONFIDENTIAL AND IS SUPPLIED ON THE EXPRESS CONDITION THAT IT SHALL NOT BE LOANED OR COPIED OR DISCLOSED TO ANY OTHER PERSON OR USED FOR ANY OTHER PURPOSE WITHOUT THE WRITTEN CONSENT OF AP RACING LTD.



IT IS RECOMMENDED THAT LOCKING WIRE IS FASTENED AROUND LEGS OF SPRING PINS TO PREVENT LOSS DUE TO VIBRATION.

ALTERNATIVE SPLIT PIN AVAILABLE ON REQUEST (CP2561-118)



Alterations		Date	Drawn
Date & No	Particulars		
18/04/03 B3922	REDRAWN ON SOLIDWORKS		RUB

Disc		Radial Outline (mm)						
Diam	Width	Effective Radius	A	B	C	D	E	F
278.00	22.86	116.50	115.85 MAX	145.00 MAX	142.95 MAX	93.00 MIN	90.05 MIN	81.05 MIN
278.00	25.40	116.50	115.85 MAX	145.00 MAX	142.95 MAX	93.00 MIN	90.05 MIN	81.05 MIN

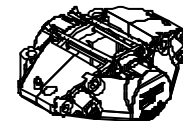
DISC AND CALIPER MOUNTING TOLERANCES TO BE SUCH THAT DISC IS CENTRAL TO WITHIN ±0.5mm

IMPORTANT NOTE:  
 ALL THRS IN CALIPER BODY ARE METRIC  
 INLET, BLEED SCREW AND BLANKING PLUG HOLES ARE M10x1.0-6H

TO BE USED WITH PAD FAMILY NUMBER CP2554

CALIPER IS HANDED BY POSITION OF BLEED SCREW ONLY  
 TWO CALIPERS PER DISC TO BE MOUNTED MIAMETRICALLY OPPOSITE ONE ANOTHER ON THE HORIZONTAL.  
 UNLESS OTHERWISE STATED ALL DIMS ARE IN mm

SHOULD PISTONS BE INADVERTANTLY REMOVED THEY SHOULD BE WIPEO CLEAN & SMEARED WITH SILICON GREASE BEFORE REPLACEMENT



SCALE 1:1	SHEET 1 OF 1
DRAWN	RICHARD BODWELL
APPROVED	
DERIVED FROM	
TITLE	
OUTBOARD B.B. 2/24 CALIPER INSTALLATION	
DRG NO.	cp2561-1cd