

PART NO.  
CP3307-1

IF THIS DOCUMENT IS PRINTED IN HARDCOPY,  
IT IS FOR INFORMATION ONLY AND THEREFORE  
NOT SUBJECT TO UPDATING CONTROLS. ALWAYS  
REFER TO VIEWSTATION FOR THE LATEST ISSUE.

FIRST ANGLE  
PROJECTION

DO NOT  
SCALE

THIS DRAWING IS CONFIDENTIAL AND IS SUPPLIED ON THE EXPRESS CONDITION THAT  
IT SHALL NOT BE LOANED OR COPIED OR DISCLOSED TO ANY OTHER PERSON OR USED  
FOR ANY PURPOSE WITHOUT THE WRITTEN CONSENT OF AUTOMOTIVE PRODUCTS p.l.c

AP  
AUTOMOTIVE  
PRODUCTS  
GROUP  
YEAR  
19 87

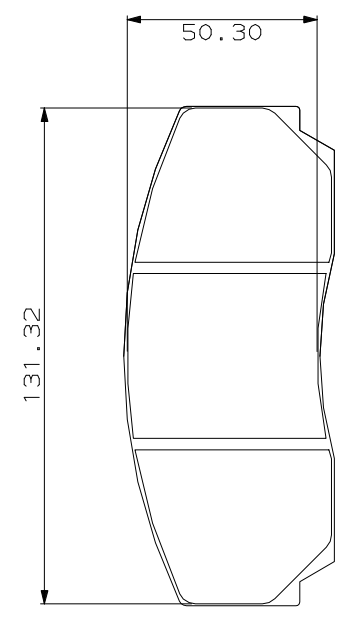
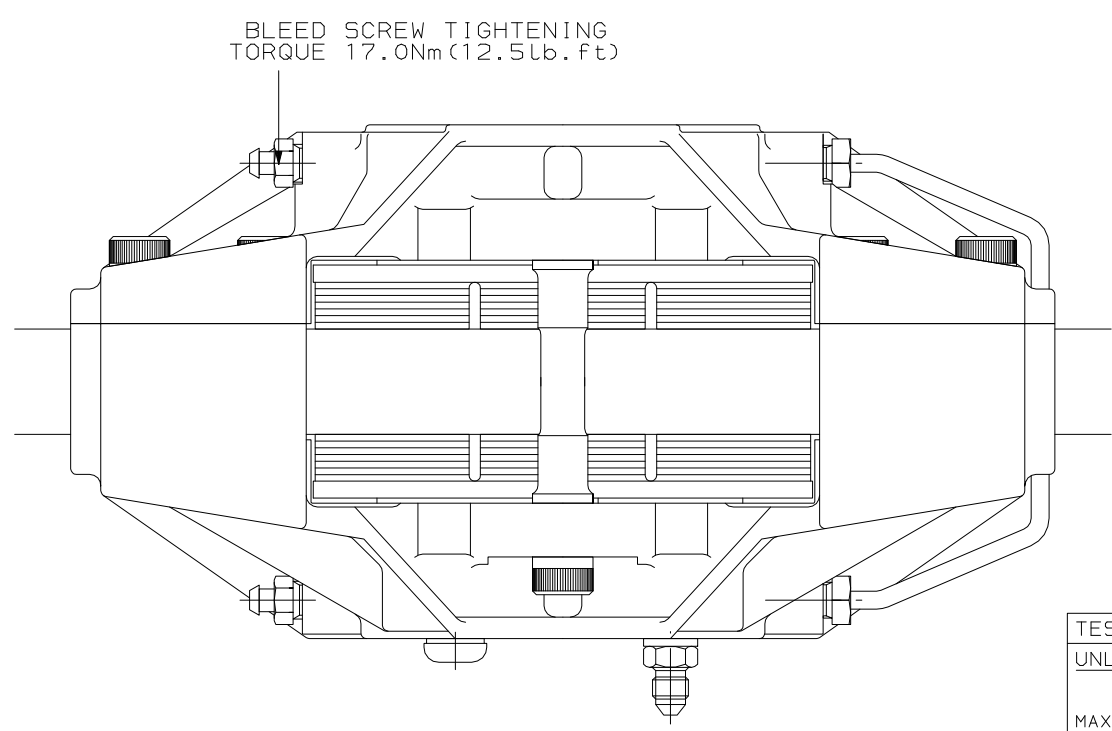
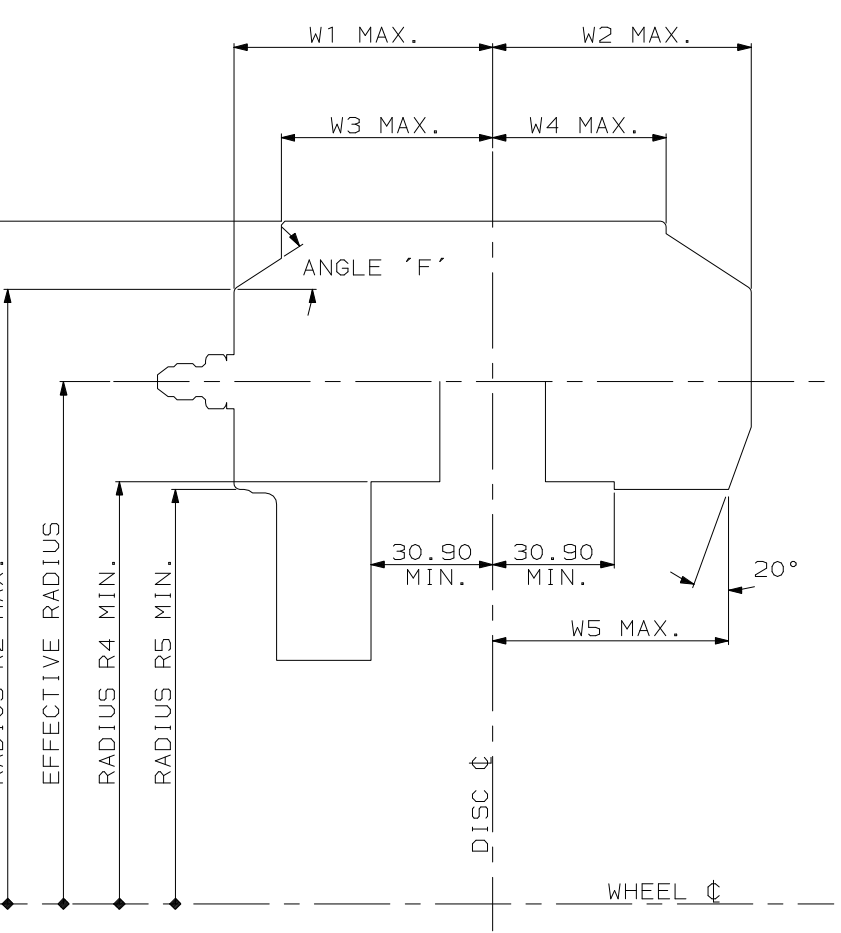
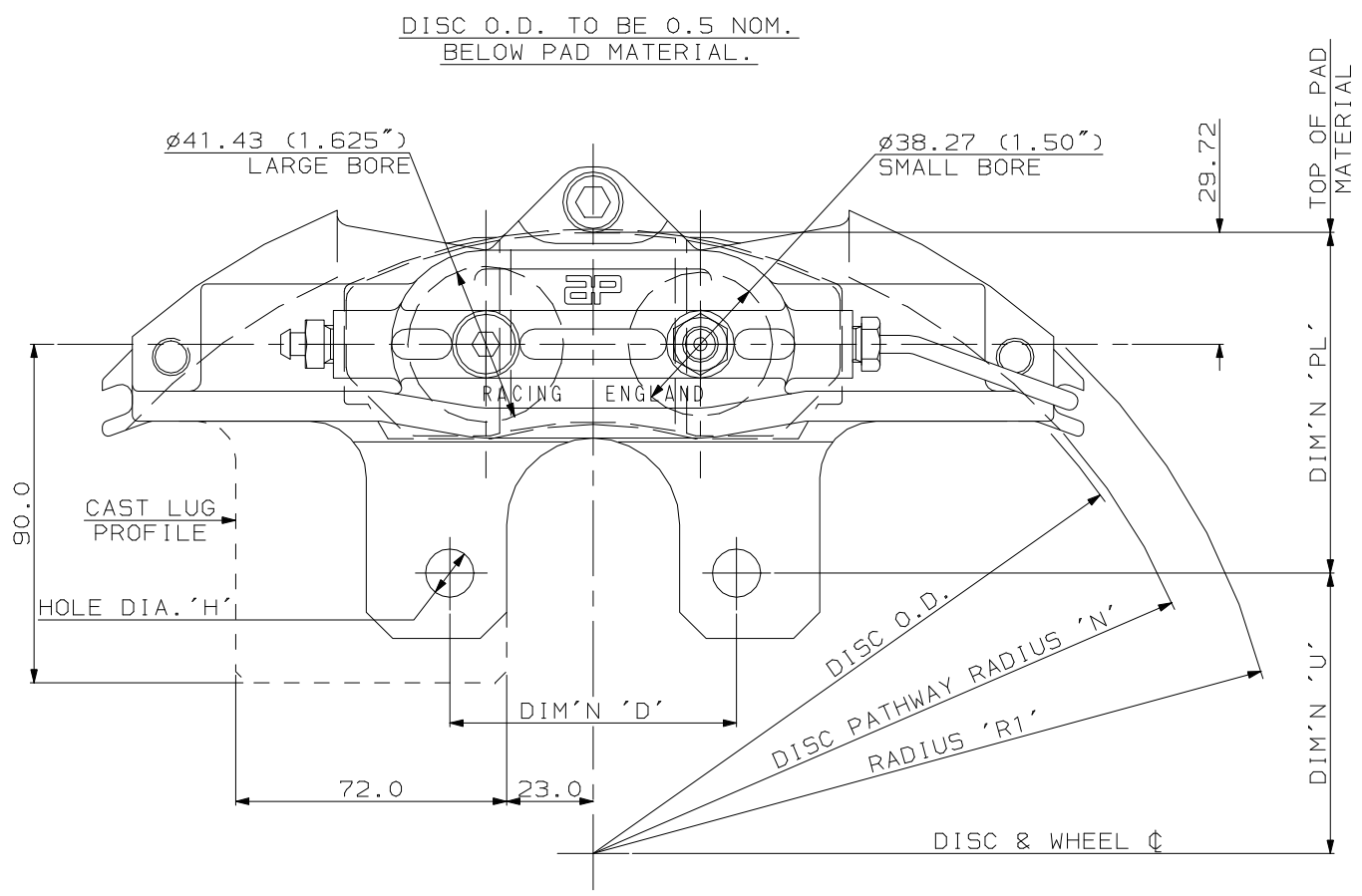
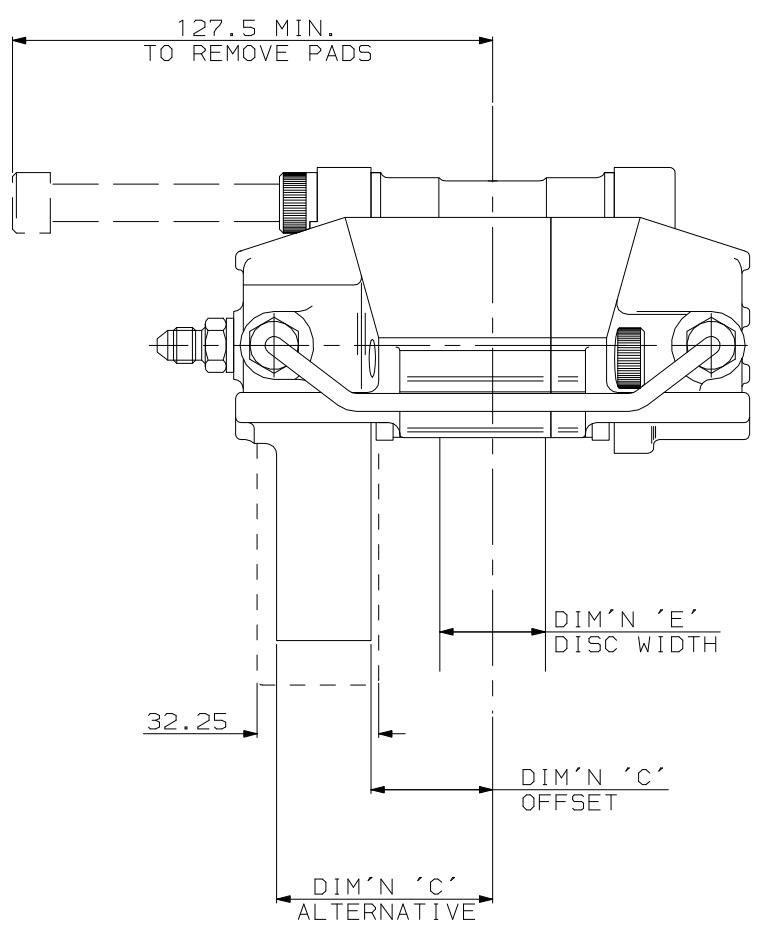
AUTOMOTIVE PRODUCTS p.l.c  
AP RACING

NOTE

VALUE

ISSUE NO. DATE & NO. ALTERATIONS PARTICULARS

11  
ISSUE CHANGES  
SEE SHEET 2



CP3215 PAD FAMILY  
PAD AREA 57.37 SQ. CM  
PAD VOLUME 70.68 CU. CM

MATERIAL

MATERIAL SPECIFICATION(S)

TREATMENT

DRAWN	SBE 23.1.87	CHECKED	
RE-DRAWN	P.R. DOE 30.10.95	CHECKED	

TEST

UNLESS OTHERWISE STATED:  
DIMENSIONAL TOLERANCES  
ANGULAR TOLERANCES  
MAX SURFACE FINISH:  
BY ANY METHOD  
ON MACHINED SURFACES  
WITHOUT MATERIAL REMOVAL

DIMENSIONS IN MILLIMETERS.  
DRAWING TO B.S. 308.  
THREADS TO B.S. 3643 PT2 (MEL110).  
REMOVE BURRS.

TITLE

SHEET SIZE A1  
SCALE 1:1  
TRANSLATION SHEET No(S)  
SHEET NO. 1 TOTAL 2

GENERATED FROM cp3307-1#1cd  
TITLE 1.50"/1.625" OPEN BACK CALIPER INSTALLATION  
PART NO. CP3307-1  
GROUP PART NO.

CALIPER ASSY FAMILY No	STROKE No				DISC DIAØ	DISC WIDTH DIM'E	DIMN 'C'	ALT.VE DIMN 'C'	DIMN 'H'	DIMN 'D'	DIMN 'PL'	RAD 'N'	DIMN 'U'	TYPICAL APPLICATIONS
	L	R	L	R										
CP3307-	14	15			304.0	27.94	32.21	53.21	12.20	76.20	66.72	154.5	84.00	mitsubishi STARION GpA
CP3307-	34	35			304.0	27.94	39.51	60.51	11.30	88.95	76.04	154.5	76.48	RANGE ROVER FRONT
CP3307-	38	39			304.0	27.94	33.00	53.95	12.20	89.05	80.02	154.5	72.50	TVR 4205 TUSCAN
CP3307-	58	59	60	61	330.2	27.94						167.6		BLANK LUG
CP3307-	62	63	64	65	304.0	27.94	32.21	53.21	14.28	82.05	83.64	154.5	68.88	PEUGEOT 306 FRONT
CP3307-	66	67	68	69	304.0	27.94	23.06	53.21	14.28	94.05	86.82	154.5	65.18	RENAULT CLIO FRONT
CP3307-			72	73	330.2	25.40	30.94	50.94	12.20	82.05	88.91	167.6	63.61	RENAULT CLIO FRONT
CP3307-	74	75	76	77	304.0	27.94						154.5		BLANK LUG
CP3307-	78	79			342.9	31.75	35.25	57.70	12.20	89.05	100.02	174.0	72.00	TVR 4205 TUSCAN
CP3307-	82	83	84	85	304.0	27.94	39.21	59.21	12.20	131.05	85.32	154.5	67.20	TOYOTA CARINA GpN
CP3307-	86	87	88	89	304.0	27.94	32.21	53.21	12.20	94.05	85.39	154.5	67.13	VW GOLF MkI FRONT
CP3307-	90	91			342.9	31.75	41.56	64.65	M10	90.05	101.02	174.0	71.00	MARCOS FRONT
CP3307-	92	93			330.2	27.94	32.21	57.21	12.85	76.20	90.56	167.6	74.53	JAGUAR E TYPE 6cyl
CP3307-	96	97			330.2	27.94	44.21	61.21	11.30	88.95	90.56	167.6	74.53	JAGUAR E TYPE V12
CP3307-	1004	1005			304.0	27.94	32.21	48.71	M12	122.05	70.26	154.5	82.24	BMW 3181
CP3307-			1016	1017	304.0	25.40	27.8	52.9	12.15	142.05	80.0	154.5	72.0	RENAULT MEGANE
CP3307-			1052	1053	304.0	27.94	28.5	52.25	12.20	120.05	82.70	154.5	69.30	VAUXHALL ASTRA '98
CP3307-	1064	1065	1066	1067	320.0	27.94	32.21	48.71	M12	122.05	81.3	167.6	78.7	BMW 3181

RADIAL PROFILE CHART.

	DISC Ø	EFF RAD	RAD 1	RAD 2	RAD 3	RAD 4	W 1	W 2	W 3	W 4	W 5	ANGLE 'F'
CP3307-14/15	Ø304.0 (12.0")	126.06	169.8	151.4	101.1	97.6	68.3	68.3	56.8	48.7	60.8	31.8°
CP3307-34/35	Ø304.0 (12.0")	126.06	169.8	151.4	101.1	97.6	68.3	68.3	56.8	48.7	60.8	31.8°
CP3307-38/39	Ø304.0 (12.0")	126.06	169.8	151.4	101.1	97.6	68.3	68.3	56.8	48.7	60.8	31.8°
CP3307-58/59/60/61	Ø330.2 (13.0")	138.34	184.3	163.6	113.3	110.1	68.3	68.3	56.8	48.7	60.8	35.5°
CP3307-62/63/64/65	Ø304.0 (12.0")	126.06	169.8	151.4	101.1	97.6	68.3	68.3	56.8	48.7	60.8	31.8°
CP3307-66/67/68/69	Ø304.0 (12.0")	126.06	169.8	151.4	101.1	97.6	68.3	68.3	56.8	48.7	60.8	31.8°
CP3307-72/73	Ø330.2 (13.0")	138.34	184.3	163.6	113.3	110.1	67.1	67.1	55.5	47.4	59.3	35.5°
CP3307-74/75/76/77	Ø304.0 (12.0")	126.06	169.8	151.4	101.1	97.6	68.3	68.3	56.8	48.7	60.8	31.8°
CP3307-78/79	Ø342.9 (13.5")	145.13	192.3	170.4	120.0	117.1	70.7	70.7	79.1	51.0	63.0	36.5°
CP3307-82/83/84/85	Ø304.0 (12.0")	126.06	169.8	151.4	101.1	97.6	68.3	68.3	56.8	48.7	60.8	31.8°
CP3307-86/87/88/89	Ø304.0 (12.0")	126.06	169.8	151.4	101.1	97.6	68.3	68.3	56.8	48.7	60.8	31.8°
CP3307-90/91	Ø342.9 (13.5")	145.13	192.3	170.4	120.0	117.1	70.7	70.7	79.1	51.0	63.0	36.5°
CP3307-92/93	Ø330.2 (13.0")	138.34	184.3	163.6	113.3	110.1	68.3	68.3	56.8	48.7	60.8	35.5°
CP3307-96/97	Ø330.2 (13.0")	138.34	184.3	163.6	113.3	110.1	68.3	68.3	56.8	48.7	60.8	35.5°
CP3307-1004/1005	Ø304.0 (12.0")	126.06	169.8	151.4	101.1	97.6	68.3	68.3	56.8	48.7	60.8	31.8°
CP3307-1016/1017	Ø304.0 (12.0")	126.06	169.8	151.4	101.1	97.6	67.1	67.1	55.5	47.4	59.3	35.5°
CP3307-1052/1053	Ø304.0 (12.0")	126.06	169.8	151.4	101.1	97.6	68.3	68.3	56.8	48.7	60.8	31.8°
CP3307-1064/1065/1066/1067	Ø320.0	130.78	180.7	158.9	108.1	104.8	68.3	68.3	56.8	48.7	60.8	35.5°

**GENERAL DESCRIPTION.**  
 THIS IS A 4 PISTON DIFFERENTIAL BORE CALIPER DESIGNED TO OPERATE ON A SOLID OR VENTILATED IRON DISC OF UP TO Ø342.9(13.5"). ALL CALIPERS ARE FITTED WITH STAINLESS STEEL FLUID BRIDGE PIPES & CONVENTIONAL TYPE PISTON SEALS.  
 TYPICAL APPLICATIONS- RACE/RALLY/HIGH PERFORMANCE SALOONS.  
 PISTON DIAMETER 2X38.105 (1.50") LEADING 2X41.235 (1.625") TRAILING  
 TOTAL PISTON AREA 49.52 SQ.CM  
 BODY MATERIAL ALUMINIUM ALLOY  
 PISTON MATERIAL ALUMINIUM ALLOY (STANDARD)  
 ALL HYDRAULIC THREADS 3/8" X 24UNF  
**IMPORTANT DIMENSIONS**  
 DIMENSION 'PL' TOP OF PAD MATERIAL TO MOUNTING HOLE CENTRE LINE WITH PAD SITTING DOWN ON LEDGE.  
 DIMENSION 'C' OFFSET - DISC CENTRE LINE TO LUG MOUNTING FACE.  
 DIMENSION 'D' MOUNTING HOLE CENTRES.  
 DIMENSION 'H' MOUNTING HOLE DIAMETER.  
 DIMENSION 'U' WHEEL CENTRE TO CALIPER MOUNTING HOLE CENTRE LINE.  
 (DISC DIAMETER/2) - 'PL' DIMENSION  
 RADIUS 'N' RADIUS OF DISC PATHWAY  
 EFFECTIVE RAD. RAD FROM WHEEL Ø TO NOM PISTON Ø  
 AP RACING TECHNICAL SECTION WILL BE PLEASED TO ADVISE ON THE MOST SUITABLE EQUIPMENT FOR ANY PARTICULAR APPLICATION.  
 1. SELECT ASSEMBLY FROM TABLE.  
 2. SELECT SUFFIX CHARACTERS AS FOLLOWS-  
 1st CHARACTER- 'S' DENOTES POSITION OF INLET ADAPTOR ('S' FOR SIDEFEED).  
 2nd CHARACTER- '0', '4' OR '7' DENOTES THE LOAD OF ANTI KNOCK BACK SPRINGS FITTED  
 '0' NO SPRINGS,  
 '4' 4lb (17.8N) SPRINGS,  
 '7' 7lb (31.0N) SPRINGS FITTED LOAD.  
 SHOULD PISTONS BE INADVERTANTLY REMOVED, THEY SHOULD BE WIPED CLEAN AND SMEARED WITH AP RACING BRAKE FLUID BEFORE REPLACEMENT.  
 3. THE CORRECT PAD FAMILY NUMBER FOR THIS CALIPER IS CP3215. PADS SHOULD BE ORDERED SEPARATELY. A WIDE VARIETY OF MATERIALS ARE AVAILABLE:- PLEASE CONTACT A.P. RACING FOR ADVICE.  
 EXAMPLE PART NUMBER - CP3307-14S4  
 USE REPLACEMENT PISTON SEAL KIT CP4518-JK

ISSUE No.	DATE & NO.	PARTICULARS	O.K.
1	23.1.87	FIRST ISSUE	
2	4.1.88 J.D.G	CP3307-38/39/40/41 ADDED.	
3	12.1.89 RAC02071	-38 TO 41 DIM K WAS 21.0 NOM.	
4	30.11.89 RAC02402	CP3307-46/47/48/49 ADDED.	
5	30.11.89	CAD REDRAW CP3307-34/35 -58/59/60/61 -62/63/64/65 -66/67/68/69 -72/73 -74/75/76/77 -78/79 -82/83/84/85 -86/87/88/89 -90/91 -92/93 -96/97	
6	22/4/98 B2032	CP3307-1016/1017 ADDED.	SRO
7	MAY '98 B2062	CP3307-1052/1053 ADDED.	SP
8	3/6/98 RAC7305	CP3307-66/67/68/69: DATA ADDED FOR ABOVE ASSYS. ON Ø295.0 DISC. DIM 'N' C WAS 32.21 DIM 'N' PL WAS 85.39. 'U' DIM 'N'5 ALTERED ACCORDINGLY.	SROH
9	07/07/98	BLEED SCREW TORQUE WAS 5.5Nm, NOW 17.0Nm	RB
10	JULY '98 RAC07353	CP3307-1004/1005 ADDED.	SP
11	30/07/02 B3420	Ø320 DISC RADIAL PROFILE ADDED TO CP3307-58/59/60/61	SAT
12	28/08/02 B3421	CP3307-1064/1065/1066/1067 ADDED	SAT

CALIPER IDENTIFICATION CHART			
RHT	RIGHT HAND TRAILING	BEHIND AXLE	
LHT	LEFT HAND TRAILING	BEHIND AXLE	
RHL	RIGHT HAND LEADING	IN FRONT OF AXLE	
LHL	LEFT HAND LEADING	IN FRONT OF AXLE	
TEST			
UNLESS OTHERWISE STATED: DIMENSIONAL TOLERANCES ANGULAR TOLERANCES MAX SURFACE FINISH: BY ANY METHOD ON MACHINED SURFACES WITHOUT MATERIAL REMOVAL DIMENSIONS IN MILLIMETERS. DRAWING TO B.S.308. THREADS TO B.S.3643 PT2 (MEL110). REMOVE BURRS.			
TREATMENT		DRAWN	SBE 23.1.87
		RE-DRAWN	P.R.DOE 30.10.95
GENERATED FROM		cp3307-1#2cd	
TITLE		1.50"/1.625" OPEN BACK CALIPER INSTALLATION	
SHEET SIZE		A1	
SCALE		PART NO.	
TRANSLATION SHEET NO(S)		CP3307-1	
SHEET NO. TOTAL		GROUP PART NO.	
2 OF 2			