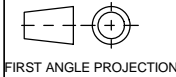


A2 INSTALLATION DRAWING

If this document is printed in hardcopy, it is for information use only and therefore is not subject to updating controls. Always refer to viewer for latest issue.



THIS DRAWING IS CONFIDENTIAL AND IS SUPPLIED ON THE EXPRESS CONDITION THAT IT SHALL NOT BE LOANED OR COPIED OR DISCLOSED TO ANY OTHER PERSON OR USED FOR ANY OTHER PURPOSE WITHOUT THE WRITTEN CONSENT OF AP RACING LTD.



© AP Racing Ltd. 2004

AP Racing
Wheler Road
Coventry
CV3 4LB

Tel: +44 024 7663 9595 e-mail: sales@ap racing.co.uk
Fax: +44 024 7663 9559 Web site: HTTP://www.ap racing.com

Issue No.	Date & No.	Alterations		Zone	Initials
		Particulars			
5	09/08/05 C2724	REDRAWN ON SOLIDWORKS CP3759-38 MOVED TO A SEPARATE SHEET		#	JG
6	30/03/09	CP3759-38 RE-ADDED.		#	JG
7	15/11/10 C3970	FITTING KIT PART NUMBERS ADDED		#	JG
8	01/05/14 C4708	FITTINGS TO BE TIGHTENED TO 28 Nm (21 ft.lb) NOTE ADDED		#	JG

DESCRIPTION

THE CP3759 SERIES CONCENTRIC SLAVE CYLINDER IS A LIGHTWEIGHT, HYDRAULICALLY SELF-CONTAINED UNIT WITH HIGH TEMPERATURE SEALS. ALL SEALING SURFACES ARE PROTECTED BY A HARD WEARING / LOW FRICTION COATING WHICH HELPS PROLONG SEAL LIFE.

ENSURE THAT THE UNIT IS INSTALLED IN THE ORIENTATIONS SHOWN, WITH THE BLEED PORT UPPERMOST. ALL FITTINGS INTENDED TO SEAT AT THE BOTTOM OF THE HYDRAULIC PORTS MUST HAVE AN INCLUDED ANGLE OF 90°

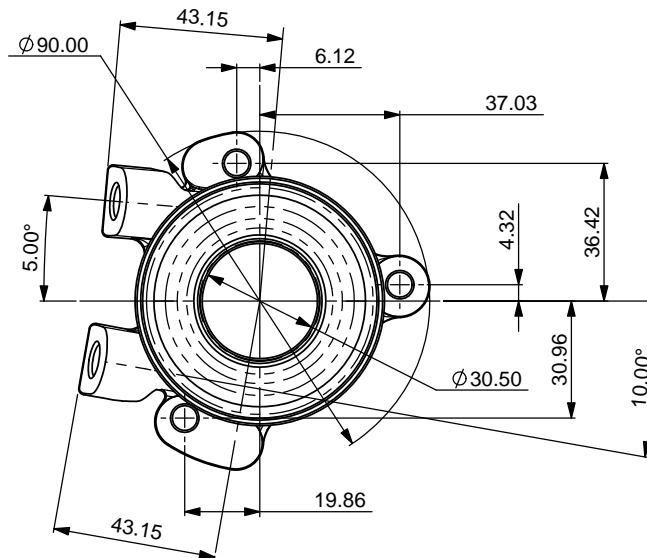
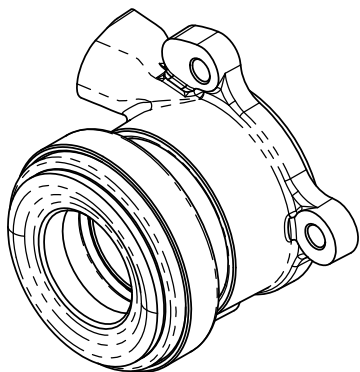
BODY MATERIAL: ALUMINIUM ALLOY (DIE CAST)
PISTON MATERIAL: ALUMINIUM ALLOY

EFFECTIVE AREA: 920 mm² (1.426 sq."")
MAXIMUM STROKE: REFER TO TABLE
MAXIMUM PRESSURE: 8.6 N/mm² (1250 psi)

HYDRAULIC PORTS: M10x1,0x11.5 MIN. FULL THREAD
HYDRAULIC FLUID: APR550 OR 600 BRAKE FLUID

HYDRAULIC FITTING KIT (STEEL ADAPTOR 7/16" -4) - CP3759-6
HYDRAULIC FITTING KIT (STEEL ADAPTOR 3/8" - 3) - CP3759-5
FITTINGS TO BE TIGHTENED TO 28 Nm (21 ft.lb)

REPLACEMENT SEAL KIT - CP3759-3

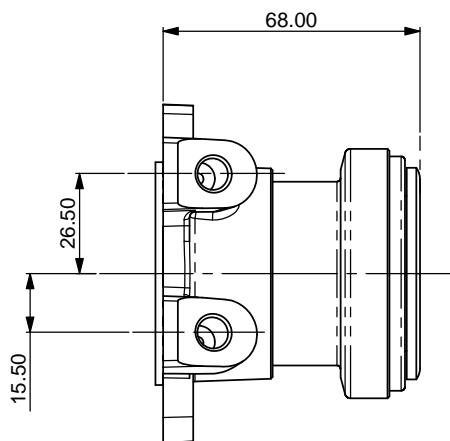
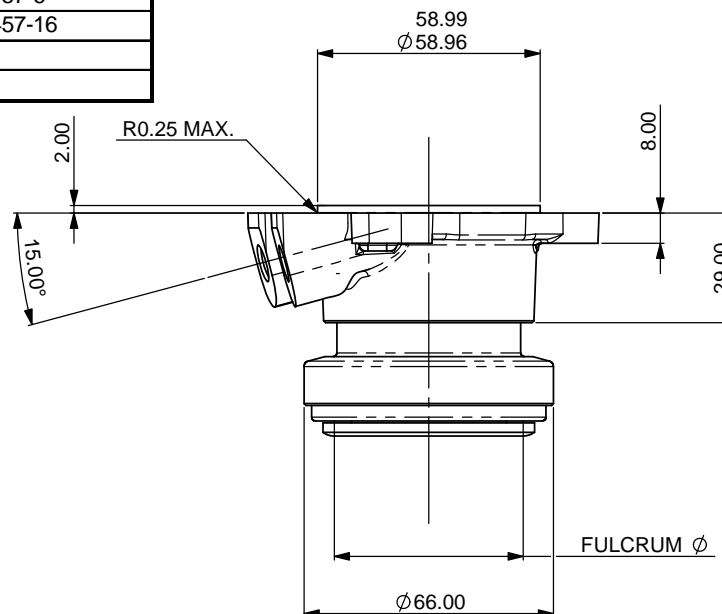


ASSEMBLY No.	BRG FULCRUM Ø	REPLACEMENT BRG.
CP3759-50	50.00 (1.969")	CP3457-11
CP3759-54	54.00 (2.126")	CP3457-6
CP3759-38	38.00 (1.496")	CP3457-16

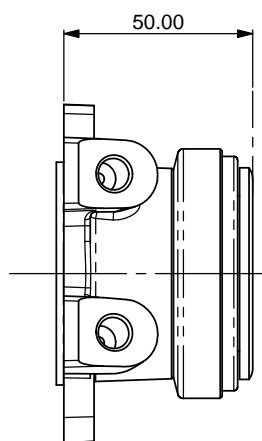
NOTE:
WHEN LARGE DIAMETER SPLINES ARE USED PLEASE CHECK CLEARANCE OF THE SPLINE IN THE SLAVE CYLINDER BODY.

LARGER SPLINES ALSO HAVE AN INCREASED DRIVEN PLATE HUB BOSS. PLEASE CHECK THE CLEARANCE OF THE DRIVEN PLATE AT MAXIMUM SLAVE TRAVEL. SEE THE CLUTCH ASSEMBLY INSTALLATION DRAWING FOR DETAILS.

FOR FURTHER INFORMATION PLEASE CONTACT AP RACING



PISTON AT MAXIMUM STROKE



PISTON FULLY RETRACTED

SCALE 1:1	SHEET 1 OF 1
DRAWN	Jeremy Govan
APPROVED	
DERIVED FROM	cp3759-1cd
TITLE CONCENTRIC SLAVE CYLINDER 18.0mm STROKE, MASTER	
DRG NO.	cp3759-1cd