

A1 INSTALLATION DRAWING

IF THIS DOCUMENT IS PRINTED IN HARDCOPY, IT IS FOR INFORMATION USE ONLY AND THEREFORE IS NOT SUBJECT TO UPDATING CONTROLS. ALWAYS REFER TO SOLIDWORKS VIEWER FOR LATEST ISSUE



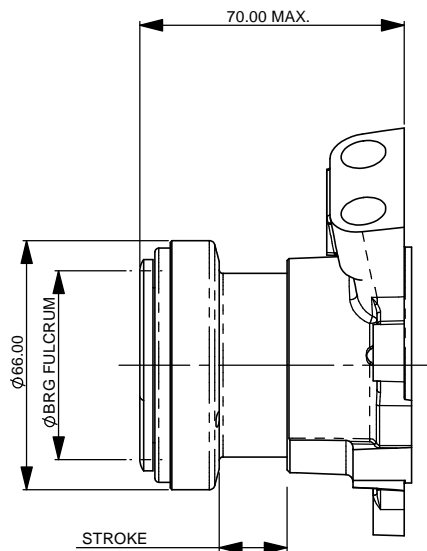
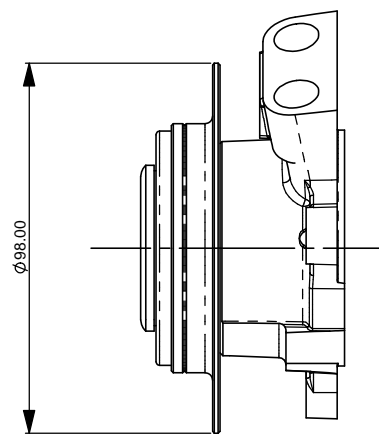
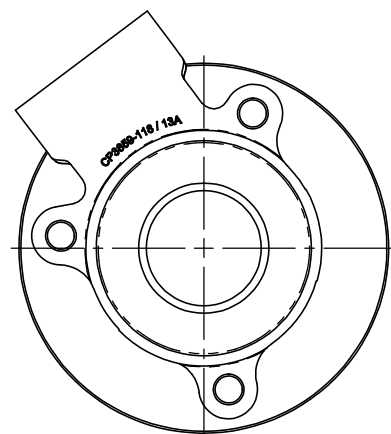
THIS DRAWING IS CONFIDENTIAL AND IS SUPPLIED ON THE EXPRESS CONDITION THAT IT SHALL NOT BE LOANED OR COPIED OR DISCLOSED TO ANY OTHER PERSON OR USED FOR ANY OTHER PURPOSE WITHOUT THE WRITTEN CONSENT OF AP RACING LTD.



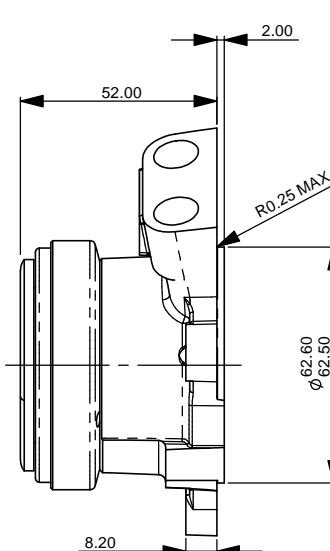
AP Racing
Wheler Road
Coventry
CV3 4LB

Tel: +44 (0) 24 7663 9595
Fax: +44 (0) 24 7663 9559
e-mail: engineering@apracing.co.uk
Web site: <http://www.apracing.com>

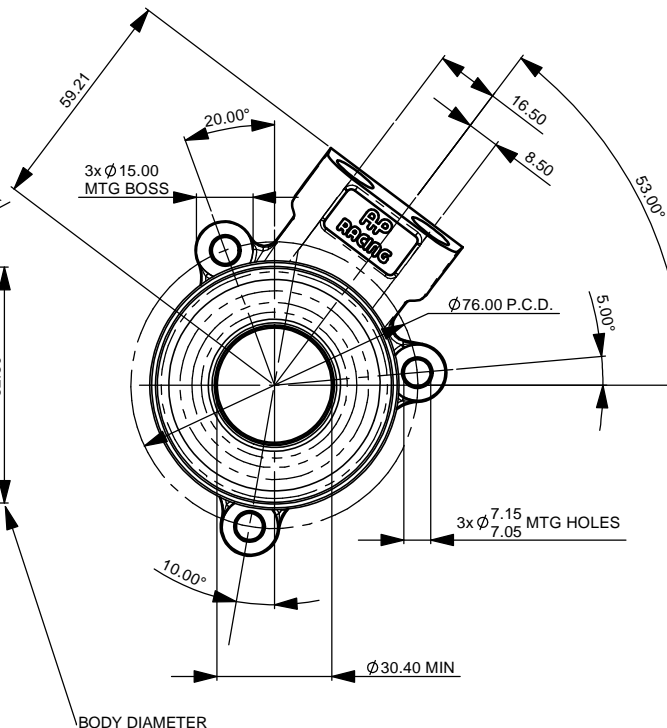
© AP Racing Ltd. 2005



PISTON AT FULL STROKE



PISTON FULLY RETRACTED

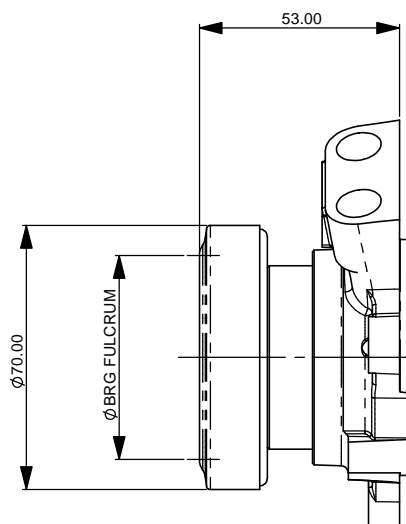
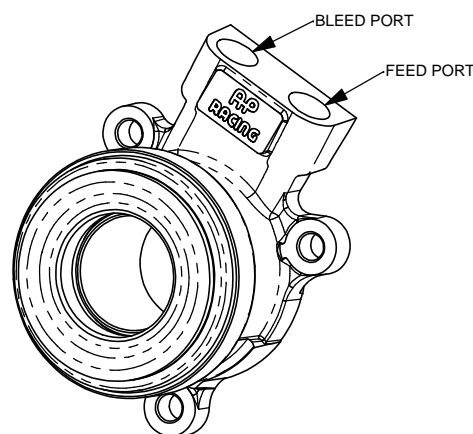


STANDARD CONFIGURATION (LVDT Option)

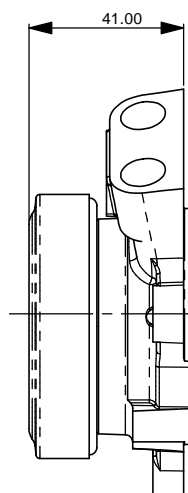
THIS SLAVE CYLINDER FEATURES:
THE BEARING IS HOUSED IN THE PISTON VIA THE OUTER RACE WITH INTEGRAL LVDT FLANGE
THE INNER RACE ROTATES, SUITABLE FOR HIGH SPEED APPLICATIONS.

STANDARD CONFIGURATION (18mm STROKE)

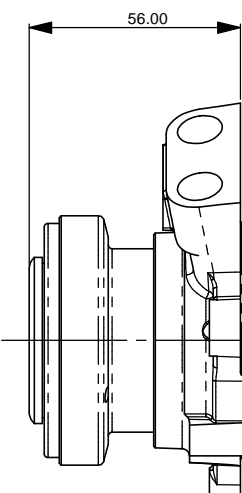
THIS SLAVE CYLINDER FEATURES:
THE BEARING IS HOUSED IN THE PISTON VIA THE OUTER RACE
THE INNER RACE ROTATES, SUITABLE FOR HIGH SPEED APPLICATIONS.



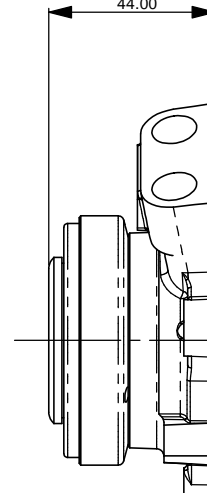
PISTON AT FULL STROKE



PISTON FULLY RETRACTED



PISTON AT FULL STROKE



PISTON FULLY RETRACTED

CP3859-1238-IN, -1250-IN AND -1254-IN (12 mm STROKE)

THIS SLAVE CYLINDER FEATURES:
A SHORTENED STROKE SO AS TO REDUCE THE OVERALL LENGTH.
THE BEARING IS HOUSED IN THE PISTON VIA THE OUTER RACE
THE INNER RACE ROTATES, SUITABLE FOR HIGH SPEED APPLICATIONS.

ALL OTHER MOUNTING DIMENSIONS REMAIN THE SAME.

DESCRIPTION

THE CP3859 SERIES CONCENTRIC SLAVE CYLINDER IS A LIGHTWEIGHT, HYDRAULICALLY SELF-CONTAINED UNIT WITH HIGH TEMPERATURE SEALS. ALL SEALING SURFACES ARE PROTECTED BY A HARD WEARING / LOW FRICTION COATING WHICH HELPS PROLONG SEAL LIFE.

NOTES:

ENSURE THAT THE UNIT IS INSTALLED AT THE SPECIFIED ANGLE, WITH THE BLEED PORT UPPERMOST. ALL FITTINGS INTENDED TO SEAT AT THE BOTTOM OF THE HYDRAULIC PORTS MUST HAVE AN INCLUDED ANGLE OF 90°

BODY MATERIAL: ALUMINIUM ALLOY (DIE CAST)
PISTON MATERIAL: ALUMINIUM ALLOY
EFFECTIVE AREA: 920 mm² (1.426 sq. in.)
MAXIMUM STROKE: REFER TO TABLE
MAXIMUM PRESSURE: 8.6 N/mm² (1250 psi)

HYDRAULIC PORTS: M12x1.0x11.5 MIN. FULL THREAD
HYDRAULIC FLUID: APR550 OR 600 BRAKE FLUID

REPLACEMENT SEAL KIT - CP3759-3

HYDRAULIC FITTING KIT (ALUMINIUM ADAPTOR 7/16" -4) - CP3859-15
HYDRAULIC FITTING KIT (STEEL ADAPTOR 3/8" -3) - CP3859-16

THIS UNIT IS INTERCHANGEABLE WITH THE SAAB 9000 SLAVE CYLINDER. PART NO'S - 8781189 AND 8781387 (5160015).

REDUCED LENGTH CONFIGURATION (12mm STROKE) *

THIS SLAVE CYLINDER FEATURES:
A SHORTENED STROKE SO AS TO REDUCE THE OVERALL LENGTH.
THE BEARING HOUSED ON THE PISTON VIA THE INNER RACE WITH THE OUTER RACE ROTATING.

ALL OTHER MOUNTING DIMENSIONS REMAIN THE SAME.

NOTE:
WHEN LARGE DIAMETER SPLINES ARE USED PLEASE CHECK CLEARANCE OF THE SPLINE IN THE SLAVE CYLINDER BODY.

LARGER SPLINES ALSO HAVE AN INCREASED DRIVEN PLATE HUB BOSS. PLEASE CHECK THE CLEARANCE OF THE DRIVEN PLATE AT MAXIMUM SLAVE TRAVEL. SEE THE CLUTCH ASSEMBLY INSTALLATION DRAWING FOR DETAILS.

MINERAL OIL VERSIONS OF ALL THE ASSEMBLIES ON THIS DRAWING ARE AVAILABLE ON CP7074-1CD.

FOR FURTHER INFORMATION PLEASE CONTACT AP RACING.

CONFIGURATION	SLAVE CYLINDER ASSEMBLY	BRG. FULCRUM DIA.	FULL STROKE	REPLACEMENT BEARING SUB ASSY.
STANDARD	CP3859-38	38,0 (1.496")	18,0 (0.709")	CP3457-16
	CP3859-38:LVDT	38,0 (1.496")	18,0 (0.709")	CP3457-16
	CP3859-50:LVDT	50,0 (1.969")	18,0 (0.709")	CP3457-11
	CP3859-45	45,0 (1.772")	18,0 (0.709")	CP3457-19
	CP3859-54	54,0 (2.126")	18,0 (0.709")	CP3457-6
REDUCED LENGTH	CP3859-1238-IN	38,0 (1.496")	12,0 (0.472")	CP3457-16
	CP3859-1250-IN	50,0 (1.969")	12,0 (0.472")	CP3457-11
	CP3859-1254-IN	54,0 (2.126")	12,0 (0.472")	CP3457-6
	CP3859-1245	45,0 (1.772")	12,0 (0.472")	CP3457-19
	CP3859-1250	50,0 (1.969")	12,0 (0.472")	CP3457-9
	CP3859-1254	54,0 (2.126")	12,0 (0.472")	CP3457-10

Issue No.	Alterations		Zone	Initials
	Date & No.	Particulars		
1	02/11/98 C1372	FIRST ISSUE		SY
2	17/12/98	NOTES AMENDED TO INCLUDE 'FITTING ANGLE MUST BE 90°'		SY
3	25/03/99	REPLACEMENT BRG CHART CP3457-11 WAS -5 & -16 WAS -15		SY
4	13/03/00	NEW 12.0 STROKE VERSIONS ADDED. SHEET SIZE A1 WAS A2. BRG CONFIG NOTES 1 & 2 ADDED. NOTE- MAX STROKE REFER TO TABLE WAS 18.0. CP3859-1250 AND -1254 ADDED. TOP VIEW DELTD.		SY
5	02/04/01	'BRG CONFIG' COLUMN ADDED TO TABLE.		SY
6	09/04/01 RAC9527	DRAWING FORMAT MODIFIED TO IMPROVE CLARITY		JG
7	03/05/02 RAC10481	CP3859-1238 ADDED		BJP
8	10/09/02 RAC10756	REVISED LENGTHS FOR CP3859-1238 ADDED	G6 G9	BJP
9	16/09/02 C2084	REFERENCES TO THE SCRAPER RING DELETED. SEAL REPAIR KIT WAS CP3859-2. LOGOS CHANGED TO LASER ETCHED TYPE.	D2 A2	JG
10	08/01/03 RAC20008 C2144	53.25 MAX WAS 53.00 MAX 41.25 MAX WAS 41.00 MAX CP3859-1245 ADDED	G5 G8 A10	BJP
11	06/02/03 C2165	CP3859-1238 REMOVED	A11	BJP
12	20/10/03 C2325	NEW TYPE CP3859-1238 ADDED	D11	BJP
13	11/12/03 C1949	CP3859-38:LVDT OPTION ADDED ONTO DRAWING	B10	GS
14	12/01/04 RAC20825	'BODY DIAMETER' NOTE ADDED.	H11	JG
15	12/02/04 C2390	INSTALLATION NOTE ADDED.	B6	JG
16	09/01/06 RAC21324	CP3859-45 ADDED.		JG
17	05/11/07 C3262	CP3859-1250-IN ADDED. CP3859-1238-IN WAS CP3859-1238.		JG
18	07/11/07 C3270	MINERAL OIL VERSION NOTE ADDED.	B7	JG
19	22/10/08 C3507	MINERAL OIL VERSION NOTE UPDATED.	B7	KJC
20	02/12/09 C3772	TOLLERANCE UPDATED TO ACCOUNT FOR ANODISING	K10	AB
21	15/11/10 C3970	FITTING KIT PART NUMBERS ADDED		JG
22	20/05/11 C4091	CASTING FORM MODIFIED TO INCLUDE 2 OFF BOSSES.		JG
23	19/07/11 C4125	CP3859-1254-IN ADDED	B11	BJP
24	10/01/12 C4186	MACHNED FORM MODIFIED TO REMOVE 2 OFF BOSSES		JG
25	31/01/13	CP3859-50:LVDT ADDED.		JG

SCALE 1:1	SHEET 1 OF 1
DRAWN	S YOUNG
APPROVED	
DERIVED FROM	
TITLE	
CONCENTRIC SLAVE CYLINDER INSTALLATION DRAWING	
DRG NO.	CP3859-1 CD