

A1 INSTALLATION DRAWING

IF THIS DOCUMENT IS PRINTED IN HARDCOPY, IT IS FOR INFORMATION USE ONLY AND THEREFORE IS NOT SUBJECT TO UPDATING CONTROLS. ALWAYS REFER TO SOLIDWORKS VIEWER FOR LATEST ISSUE



THIS DRAWING IS CONFIDENTIAL AND IS SUPPLIED ON THE EXPRESS CONDITION THAT IT SHALL NOT BE LOANED OR COPIED OR DISCLOSED TO ANY OTHER PERSON OR USED FOR ANY OTHER PURPOSE WITHOUT THE WRITTEN CONSENT OF AP RACING LTD.



AP Racing
Wheler Road
Coventry
CV3 4LB

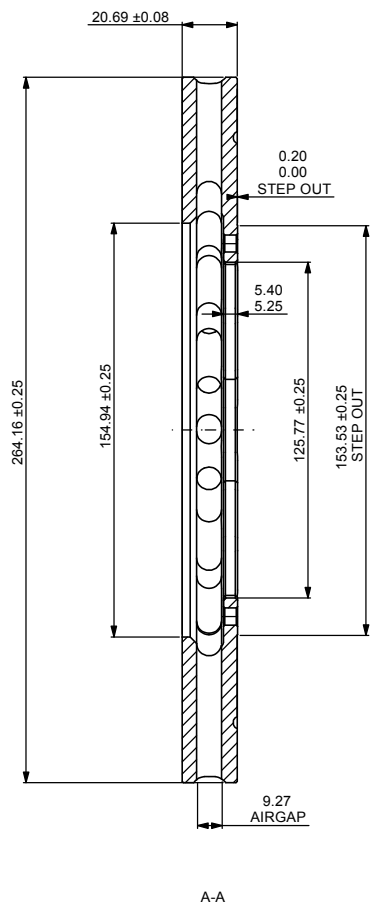
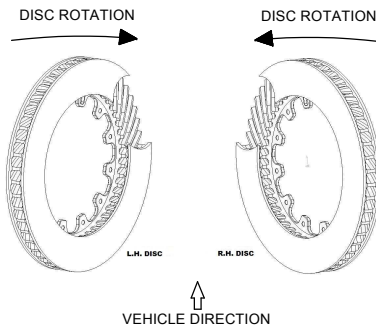
Tel: +44 (0) 24 7663 9595
Fax: +44 (0) 24 7663 9559
e-mail: engineering@apracings.com
Web site: http://www.apracings.com

© AP Racing Ltd. 2005

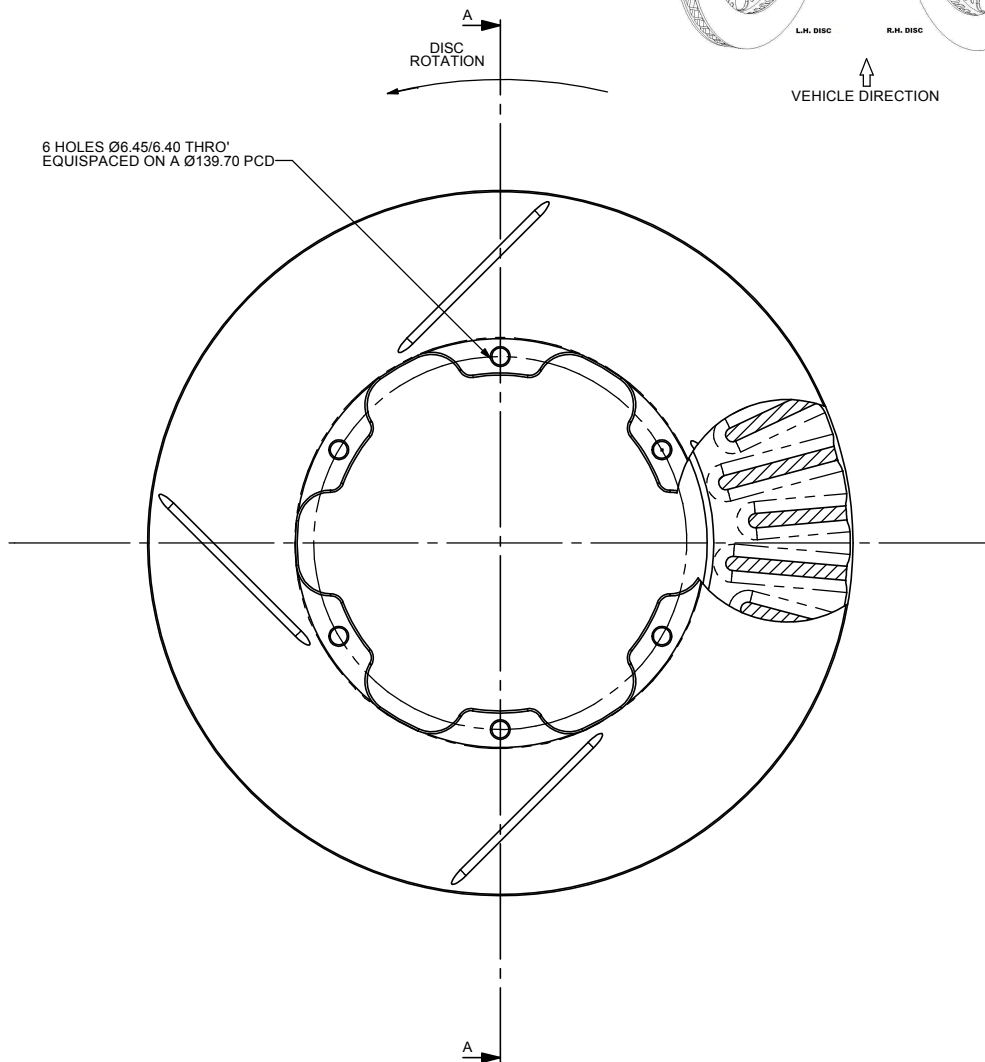
DISC PART NUMBERS:
CP4136-208 NON HANDED
THIS IS A 36 VANES DISC OF MASS 3.63Kg
THIS DISC WAS DESIGNED TO WORK WITH A D53.5 DEPTH PAD.

FOR DISC MOUNTING TECHNIQUES, BEDDING PROCEDURE AND DISC COOLING RECOMMENDATIONS SEE AP RACING BRAKE DISC CATALOGUE.

DISC INSTALLATION



6 HOLES Ø6.45/6.40 THRO' EQUISPACED ON A Ø139.70 PCD



ISSUE NO.	Alterations			Zone	Initials
	Date & No.	Particulars			
2	16/05/06 B4460	REDRAWN ON SOLIDWORKS DIM 5.40/5.25 WAS 5.65/5.50 CONVERTED TO TWIN TURN			SAT
3	22/04/10	MTG HOLE PCD WAS SHOWN INCORRECTLY		8H	SAT

SCALE 1:1		SHEET 1 OF 1	
DRAWN	Steve Thomas		
APPROVED			
DERIVED FROM			
TITLE			
Ø264.16 x 20.69			
VENTILATED DISC			
DRG NO.	CP4136-208G4		