

A1 INSTALLATION DRAWING

IF THIS DOCUMENT IS PRINTED IN HARDCOPY, IT IS FOR INFORMATION USE ONLY AND THEREFORE IS NOT SUBJECT TO UPDATING CONTROLS. ALWAYS REFER TO SOLIDWORKS VIEWER FOR LATEST ISSUE



THIS DRAWING IS CONFIDENTIAL AND IS SUPPLIED ON THE EXPRESS CONDITION THAT IT SHALL NOT BE LOANED OR COPIED OR DISCLOSED TO ANY OTHER PERSON OR USED FOR ANY OTHER PURPOSE WITHOUT THE WRITTEN CONSENT OF AP RACING LTD.



AP Racing
Wheler Road
Coventry
CV3 4LB

Tel: +44 (0) 24 7663 9595
Fax: +44 (0) 24 7663 9559
e-mail: engineering@apracings.co.uk
Web site: <http://www.apracings.com>

© AP Racing Ltd. 2005

DISC PART NUMBERS:

CP4136-86 NON HANDED

THIS IS A 36 VANES DISC OF MASS 3.23Kg

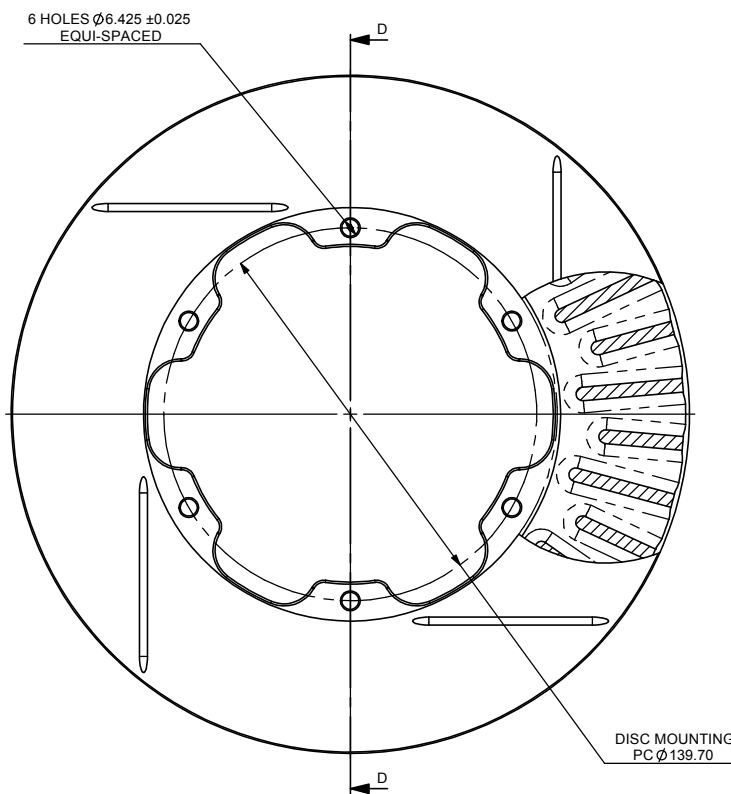
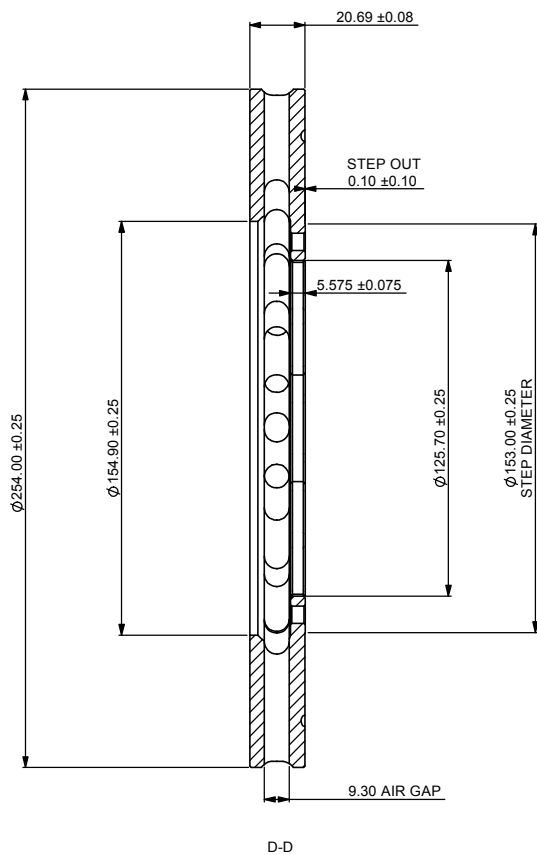
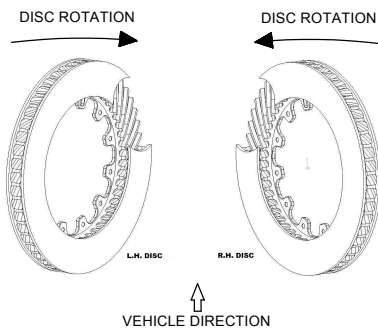
THIS DISC WAS DESIGNED TO WORK WITH A D50 DEPTH PAD.

FOR DISC MOUNTING TECHNIQUES, BEDDING PROCEDURE AND DISC COOLING RECOMMENDATIONS SEE AP RACING BRAKE DISC CATALOGUE.

SUFFIX TO DISC PART NUMBERS

P = PLAIN, NO GROOVES OR HOLES
Gn = STRAIGHT GROOVES AS SHOWN, VALUE n PER FACE
i.e. G4 MEANS 4 GROOVVES PER FACE.

DISC INSTALLATION



Issue No.	Alterations		Zone	Initials
	Date & No.	Particulars		
2	15/10/07 B4460:ID76	REDRAWN ON SOLIDWORKS CONVERTED TO TWIN TURN 0.20/0.00 STEP OUT ADDED Ø153.0 STEP DIA ADDED		DRA

SCALE 1:1		SHEET 1 OF 1	
DRAWN	D.ARROWSMITH		
APPROVED			
DERIVED FROM			
TITLE			
Ø254 x 20.7			
VENTILATED DISC			
DRG NO.	CP4136-568 CD		