

A1 INSTALLATION DRAWING

IF THIS DOCUMENT IS PRINTED IN HARDCOPY, IT IS FOR INFORMATION USE ONLY AND THEREFORE IS NOT SUBJECT TO UPDATING CONTROLS. ALWAYS REFER TO SOLIDWORKS VIEWER FOR LATEST ISSUE



THIS DRAWING IS CONFIDENTIAL AND IS SUPPLIED ON THE EXPRESS CONDITION THAT IT SHALL NOT BE LOANED OR COPIED OR DISCLOSED TO ANY OTHER PERSON OR USED FOR ANY OTHER PURPOSE WITHOUT THE WRITTEN CONSENT OF AP RACING LTD.



AP Racing
Wheler Road
Coventry
CV3 4LB

Tel: +44 (0) 24 7663 9595
Fax: +44 (0) 24 7663 9559
e-mail: engineering@apracings.co.uk
Web site: <http://www.apracing.com>

© AP Racing Ltd. 2005

GENERAL DESCRIPTION:
4 PISTON DIFFERENTIAL BORE CALIPER TO SUIT UP TO Ø280 x 28 IRON DISC

APPLICATION:
RACE - 13" WHEEL

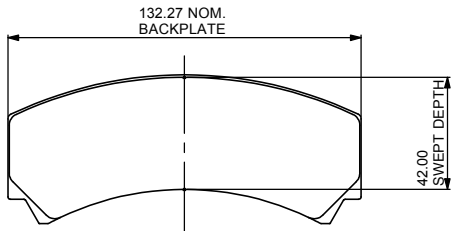
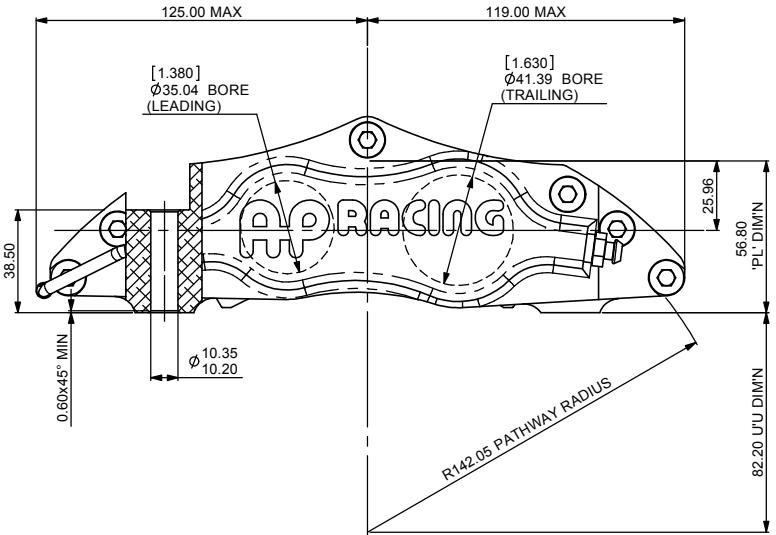
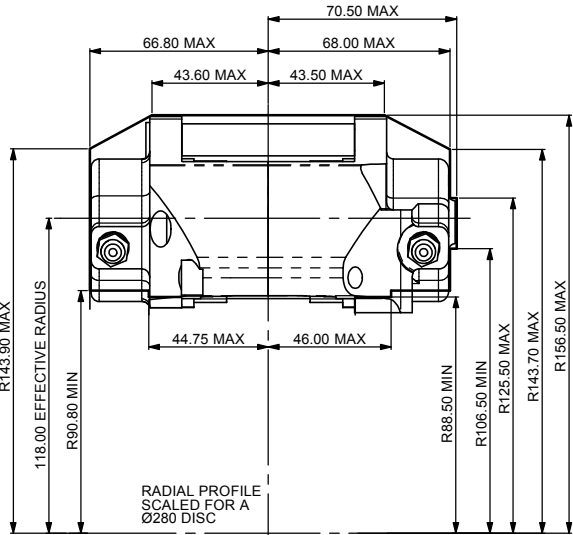
TECHNICAL INFORMATION:
TOTAL PISTON AREA: 45.92 cm²
PISTON MATERIAL: ALUMINIUM ALLOY
BODY MATERIAL: ALUMINIUM ALLOY
ASSEMBLY WEIGHT: 1.98KG

INSTALLATION INFORMATION
DISC & CALIPER MOUNTING TOLERANCES TO BE SUCH THAT THE DISC IS CENTRAL TO THE CALIPER TO WITHIN ±0.5mm.
CALIPER TO BE MOUNTED WITHIN ±15° FROM VERTICAL.
DISC DIAMETRAL CLEARANCE SHOULD BE 2.5mm NOM. FROM DISC O.D. TO PATHWAY.
BLEED SCREW MAX. TIGHTENING TORQUE 17Nm

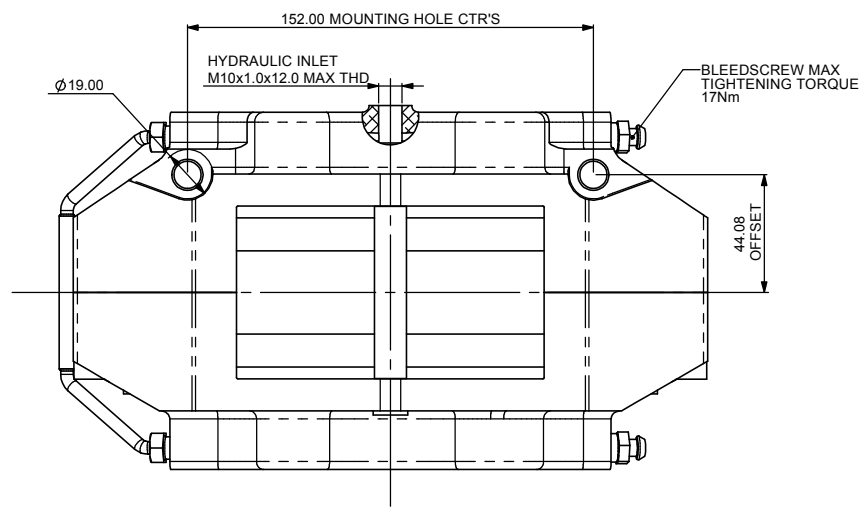
KEY TO DIMENSIONS:
"PL": TOP OF PAD MATERIAL TO MOUNTING BOSS FACE WITH PAD SITTING DOWN ON LEDGE.
"U": WHEEL CENTRE LINE TO CALIPER MOUNTING BOSS FACE (DISC Ø/2) - DIMENSION "PL".

CALIPER PART NUMBERS
CP4219-8S0 - RIGHT HAND TRAILING (BEHIND AXLE)
CP4219-8L0 - LEFT HAND TRAILING (BEHIND AXLE)
CP4219-10S0 - RIGHT HAND LEADING (IN FRONT OF AXLE)
CP4219-11S0 - LEFT HAND LEADING (IN FRONT OF AXLE)

Issue No.	Alterations			Zone	Initials
	Date & No.	Particulars	#		
1	03/10/07 B4976	FIRST ISSUE			JH
2	17/03/2008 B5005	MTG HOLE CHANGED 10.35/10.20 WAS 9.85/9.70.			CDA



PAD AREA = 51.17 cm²
PAD VOLUME = 62.84 cm³
PAD THICKNESS = 16.75 mm



**THIS CALIPER IS LIMITED TO [TBA] BAR
MAXIMUM PRESSURE APPLICATIONS.**

SCALE 1:1	SHEET 1 OF 1
DRAWN	jheritage
APPROVED	
DERIVED FROM	
TITLE	4-POT RACE CALIPER
DRG NO.	CP4219-7CD