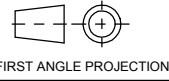


A2 INSTALLATION DRAWING

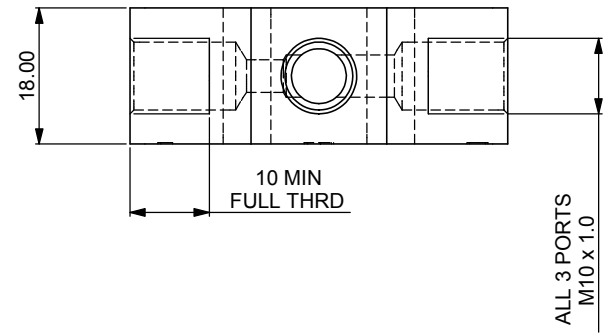
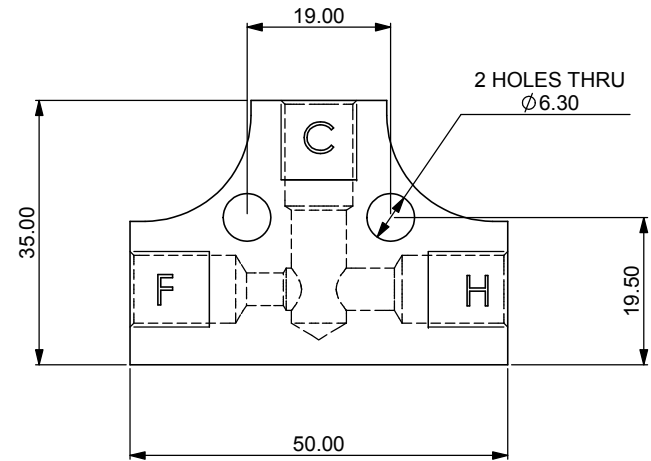
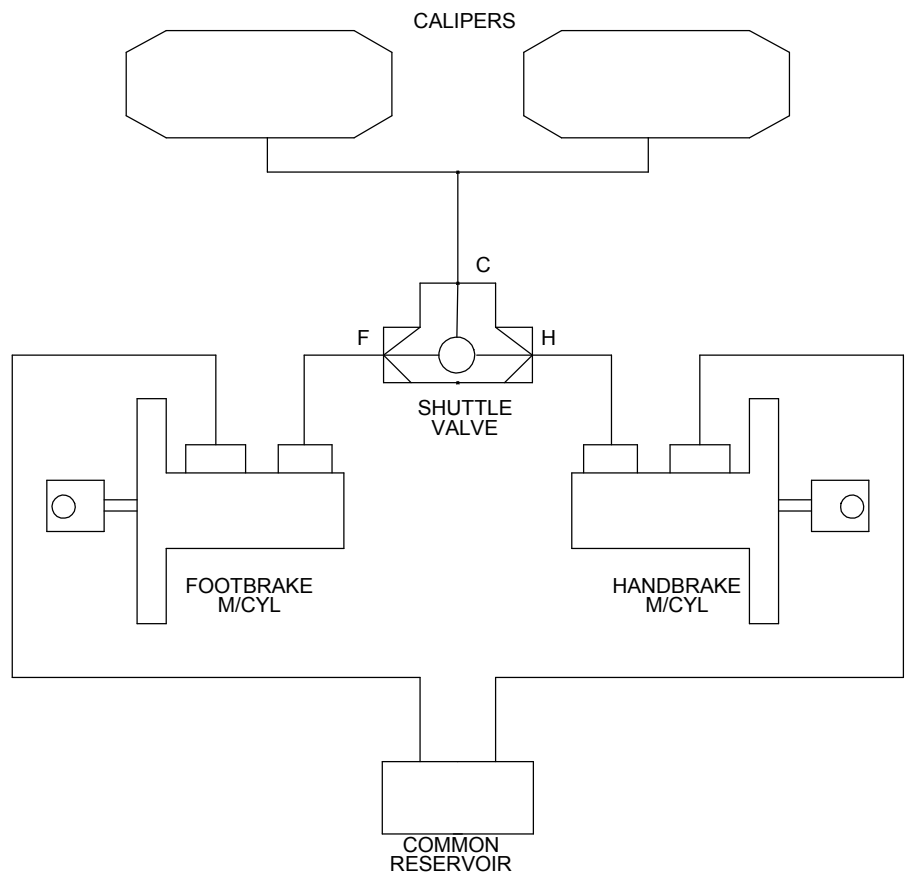
If this document is printed in hardcopy, it is for information use only and therefore is not subject to updating controls. Always refer to viewer for latest issue.



THIS DRAWING IS CONFIDENTIAL AND IS SUPPLIED ON THE EXPRESS CONDITION THAT IT SHALL NOT BE LOANED OR COPIED OR DISCLOSED TO ANY OTHER PERSON OR USED FOR ANY OTHER PURPOSE WITHOUT THE WRITTEN CONSENT OF AP RACING LTD.

AP Racing
Wheler Road
Coventry
CV3 4LB
Tel: +44 024 7663 9595
Fax: +44 024 7663 9559
e-mail: sales@apracing.co.uk
Web site: http://www.apracing.com
© AP Racing Ltd. 2005

CIRCUIT SCHEMATIC



THE AP RACING SHUTTLE VALVE CP5088-1 IS A MEANS OF FEEDING TWO INPUT HYDRAULIC SYSTEMS INTO ONE OUTPUT. THE OUTPUT PRESSURE WILL BE AS THE LARGEST INPUT. A TYPICAL USAGE TO SEPARATE A HYDRAULIC HANDBRAKE FROM THE FOOTBRAKE SYSTEM IS ILLUSTRATED ABOVE.

IMPORTANT
FOOTBRAKE AND HANDBRAKE MASTER CYLINDERS MUST BE FED FROM A COMMON RESERVOIR AS INDICATED.

WHEN BRAKE IS OPERATED FROM ONE SOURCE, THIS VALVE WILL DECAY AT A RATE OF ABOUT 6 BARS OVER 10 MINUTES. AS SUCH IT SHOULD NOT BE USED TO PARK THE CAR FOR LONG PERIODS UNATTENDED.

DATA
BODY MATERIAL : ALUMINIUM
MASS : 55gm

Issue No.	Date & No.	Alterations		Zone	Initials
		#	Particulars		
1	11/09/08 B5151		FIRST ISSUE		DRA

SCALE 1:1	SHEET 1 OF 1
DRAWN	D.ARROWSMITH
APPROVED	
DERIVED FROM	
TITLE SHUTTLE VALVE	
DRG NO.	CP5088-1CD