

B1 INSTALLATION DRAWING

IF THIS DOCUMENT IS PRINTED IN HARDCOPY, IT IS FOR INFORMATION USE ONLY AND THEREFORE IS NOT SUBJECT TO UPDATING CONTROLS. ALWAYS REFER TO SOLIDWORKS VIEWER FOR LATEST ISSUE



THIS DRAWING IS CONFIDENTIAL AND IS SUPPLIED ON THE EXPRESS CONDITION THAT IT SHALL NOT BE LOANED OR COPIED OR DISCLOSED TO ANY OTHER PERSON OR USED FOR ANY OTHER PURPOSE WITHOUT THE WRITTEN CONSENT OF AP RACING LTD.

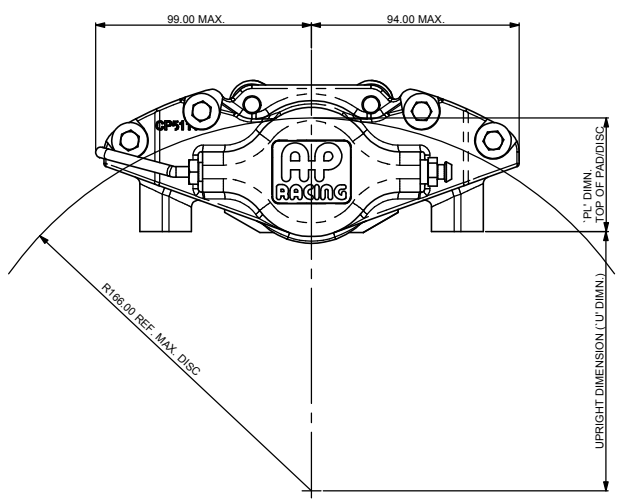
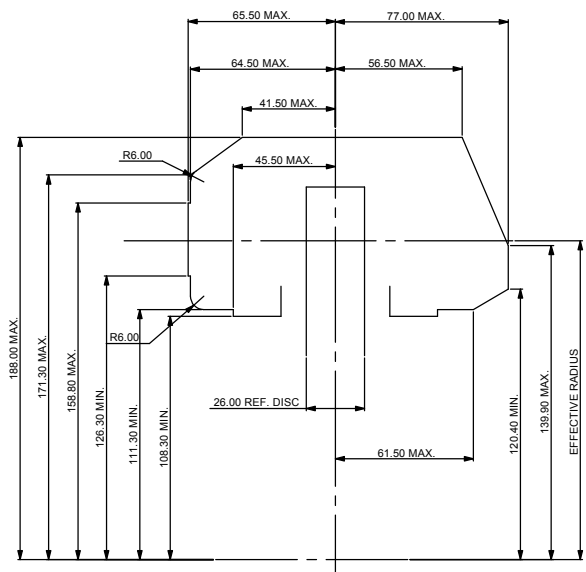
© AP Racing Ltd. 2002
 AP Racing
 Wheler Road
 Coventry
 CV3 4LB
 Tel: +44 024 7663 9595 e-mail: sales@apracing.co.uk
 Fax: +44 024 7663 9559 Web site: HTTP://www.apracing.com

CALIPER SPECIFICATION

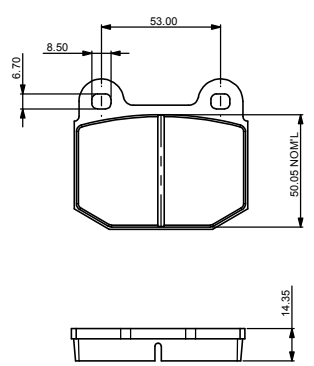
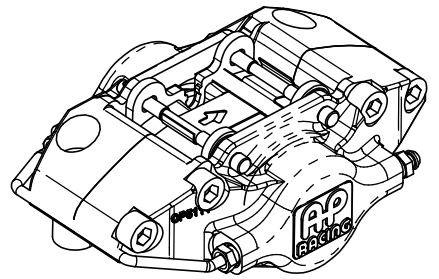
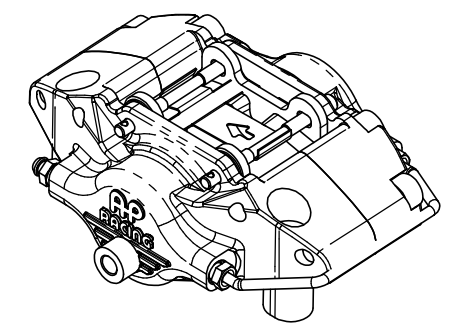
BORE SIZE	41.28 (1.625")
PISTON AREA / PAD	13.4 SQ. CM
DISC DIA. MAX.	332.00
DISC THICKNESS MAX.	26.00
DISC THICKNESS MIN. (WORN CONDITION)	24.00 (DIFFERENTIAL WEAR NOT TO EXCEED 0.50MM SIDE TO SIDE)
HYDRAULIC FEED	M10 X 1.0
DRY WEIGHT (LESS PADS)	1.50kg
PAD FAMILY	CP5119
EFFECTIVE RADIUS (ON DIA. 332.00 DISC)	142.00
'PL' DIMN.	50.50
OFFSET 'C' DIMN.	27.50
MTG. HOLE CENTRES 'D' DIMN.	130.00
PAD FRICTION MATERIAL MIN. THICKNESS	2.50
PAD RETENTION	2 x RETAINER PIN WITH R CLIP
TIGHTENING TORQUES	BLEED SCREW : 17Nm HYDRAULIC FEED : 25Nm
CORROSION PROTECTION	FLUID RESISTANT BLACK PAINT FINISH - ALUMINIUM BODY BOOT TYPE DIRT SEALS

CALIPER IDENTIFICATION CHART

RHT	RIGHT HAND TRAILING (BEHIND AXLE)
LHT	LEFT HAND TRAILING (BEHIND AXLE)
RHL	RIGHT HAND LEADING (IN FRONT OF AXLE)
LHL	LEFT HAND LEADING (IN FRONT OF AXLE)

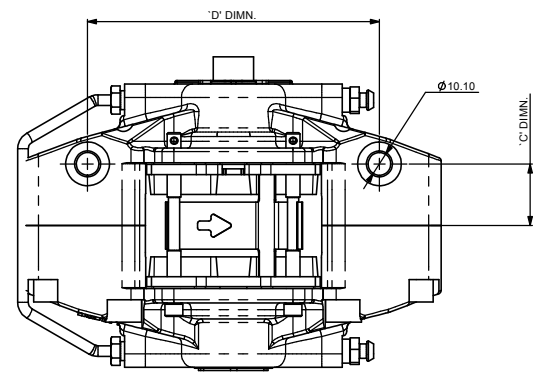


CALIPER RADIAL PROFILE AS FITTED ON Ø332.00 DISC.



CP5119 PAD FAMILY

PAD AREA - NOMINAL:
 SLOTTED - 33.70 cm²
 FULL AREA - 35.10 cm²



PART NUMBERING CONVENTION

PART NUMBER	DESCRIPTION
CP5317-2S0	RHT/LHT - SIDE FEED - NO ANTI KNOCK BACK SPRING
CP5317-3S0	LHT/RHL - SIDE FEED - NO ANTI KNOCK BACK SPRING

REV	Alterations			Zone	Initials
	Date & No.	Particulars	#		
1	13/11/02 R1067	FIRST ISSUE			TTF
2	24/01/07 R2064	LOGO UPDATED			SW

SCALE 1:1 SHEET 1 OF 1

DRAWN TOMISLAV FERENC

APPROVED

DERIVED FROM CP5315-1CD

TITLE
 CALIPER INSTALLATION DRAWING
 Ø332 MAX. x 26 DISC INSTALLATION

DRG NO. cp5317-1cd