

A1 INSTALLATION DRAWING

IF THIS DOCUMENT IS PRINTED IN HARDCOPY, IT IS FOR INFORMATION USE ONLY AND THEREFORE IS NOT SUBJECT TO UPDATING CONTROLS. ALWAYS REFER TO SOLIDWORKS VIEWER FOR LATEST ISSUE



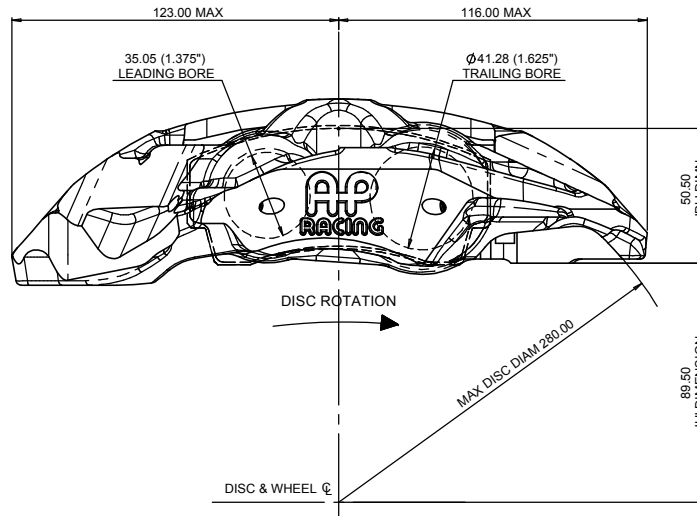
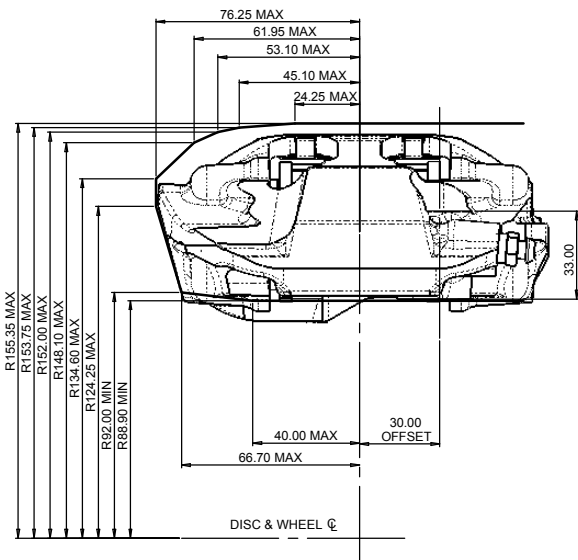
THIS DRAWING IS CONFIDENTIAL AND IS SUPPLIED ON THE EXPRESS CONDITION THAT IT SHALL NOT BE LOANED OR COPIED OR DISCLOSED TO ANY OTHER PERSON OR USED FOR ANY OTHER PURPOSE WITHOUT THE WRITTEN CONSENT OF AP RACING LTD.



AP Racing
Wheler Road
Coventry
CV3 4LB

Tel: +44 (0) 24 7663 9595
Fax: +44 (0) 24 7663 9559
e-mail: engineering@apracings.co.uk
Web site: http://www.apracings.com

© AP Racing Ltd. 2005



GENERAL DESCRIPTION

THIS IS A 4 PISTON DIFFERENTIAL BORE CALIPER, DESIGNED TO OPERATE ON A VENTILATED DISC Ø280.0 (11.0") x 25.4 (1.0") THICK. STAINLESS STEEL BRIDGE PIPES AND PAD ABUTMENT WEAR PLATES ARE FITTED AS STANDARD. CONVENTIONAL TYPE PISTON SEALS ARE FITTED IN THE BORES.

GENERAL APPLICATION
SINGLE SEATER FRONT/REAR

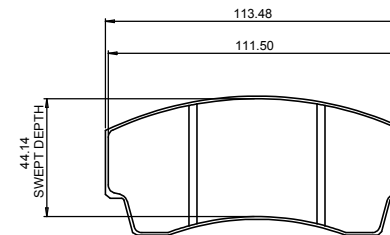
TECHNICAL & INSTALLATION INFORMATION
PISTON DIAMETER - 35.05 (1.375") LEADING
- 41.28 (1.625") TRAILING
TOTAL PISTON AREA - 46.23cm²

BODY MATERIAL ALUMINIUM ALLOY
ALL HYDRAULIC THREADS M10 x 1.0
PISTON MATERIAL ALUMINIUM ALLOY (STANDARD)

KEY TO DIMENSIONS
DIMENSION 'PL' - TOP OF PAD MATERIAL TO MOUNTING HOLE BOSS FACE WITH PAD SITTING DOWN ON LEDGE.
DIMENSION 'U' - WHEEL CENTRE LINE TO CALIPER MOUNTING BOSS FACE (DISCØ/2)

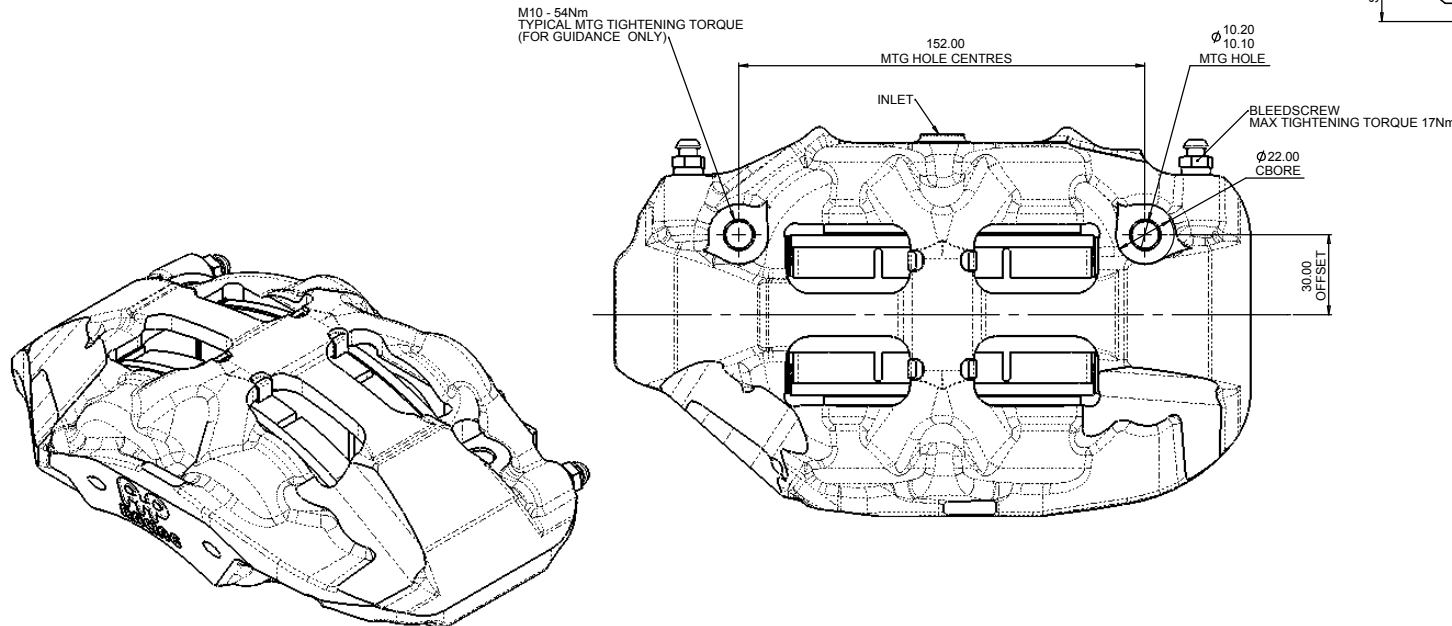
EXAMPLE CALIPER PART NUMBERS
CP5567-2S4 - RIGHT HAND
CP5567-3S4 - LEFT HAND

SEE SHEET 2 FOR SPARE PARTS LIST



CP3345 FAMILY IRON PAD

PAD AREA : 43.39cm²
PAD VOLUME : 50.00cm³
PAD THICKNESS : 15.90mm



Issue No.	Alterations			Zone	Initials
	Date & No.	Particulars	#		
1	28/07/2009 B5348	FIRST ISSUE			CD
2	12/08/2009	LEADING VERSIONS REMOVED. BLANKING PLUG REMOVED. SPARES SHEET CORRECTED.			CD

SCALE 1:1	SHEET 1 OF 2
DRAWN	CHRIS ARROWSMITH
APPROVED	
DERIVED FROM	
TITLE 1.625x1.375 4 POT FORGED RADI-CAL DESIGN	
DRG NO.	CP5567-1CD

A1 INSTALLATION DRAWING

IF THIS DOCUMENT IS PRINTED IN HARDCOPY, IT IS FOR INFORMATION USE ONLY AND THEREFORE IS NOT SUBJECT TO UPDATING CONTROLS. ALWAYS REFER TO SOLIDWORKS VIEWER FOR LATEST ISSUE



THIS DRAWING IS CONFIDENTIAL AND IS SUPPLIED ON THE EXPRESS CONDITION THAT IT SHALL NOT BE LOANED OR COPIED OR DISCLOSED TO ANY OTHER PERSON OR USED FOR ANY OTHER PURPOSE WITHOUT THE WRITTEN CONSENT OF AP RACING LTD.

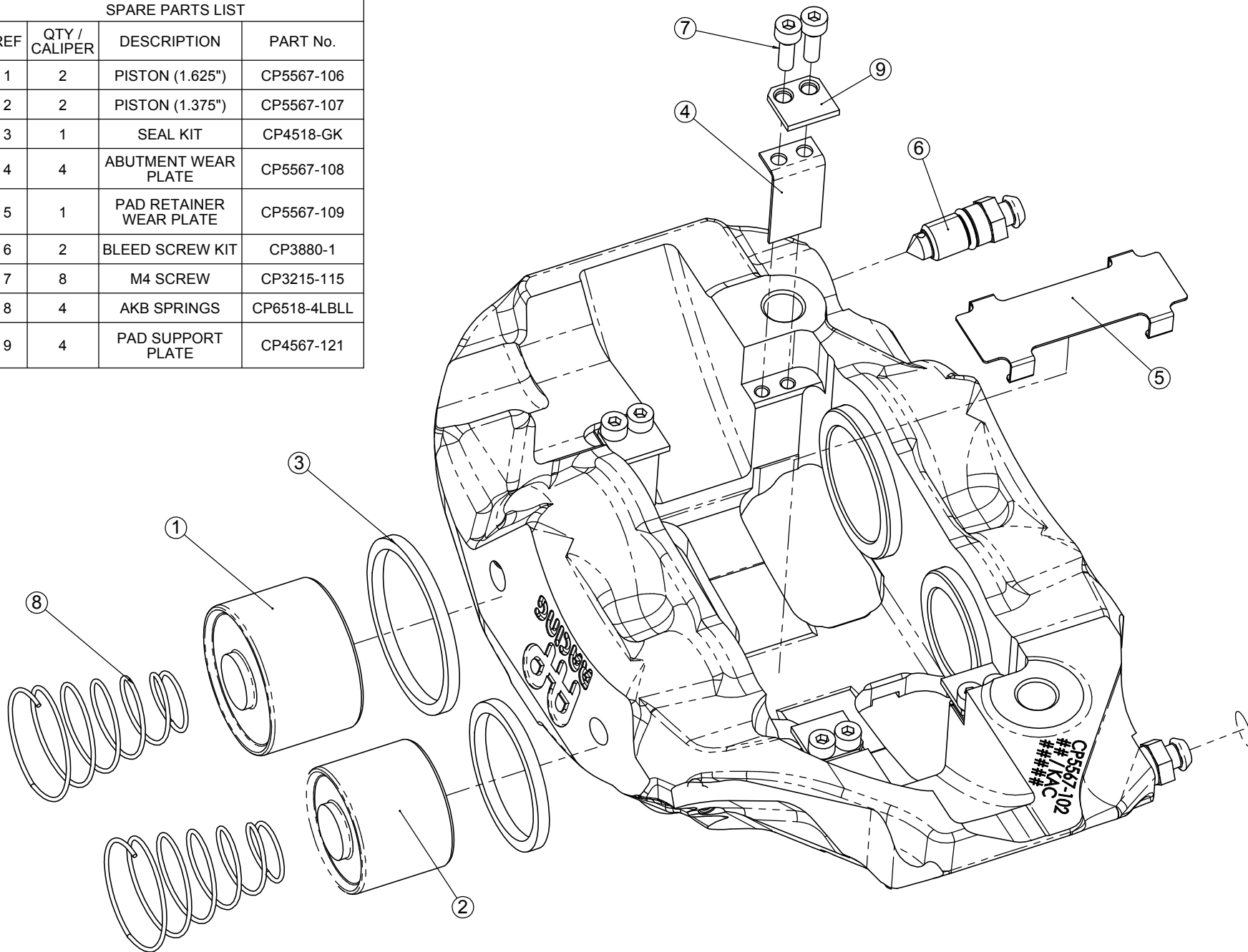


AP Racing
Wheler Road
Coventry
CV3 4LB

Tel: +44 (0) 24 7663 9595
Fax: +44 (0) 24 7663 9559
e-mail: engineering@apracings.co.uk
Web site: <http://www.apracings.com>

© AP Racing Ltd. 2005

SPARE PARTS LIST			
REF	QTY / CALIPER	DESCRIPTION	PART No.
1	2	PISTON (1.625")	CP5567-106
2	2	PISTON (1.375")	CP5567-107
3	1	SEAL KIT	CP4518-GK
4	4	ABUTMENT WEAR PLATE	CP5567-108
5	1	PAD RETAINER WEAR PLATE	CP5567-109
6	2	BLEED SCREW KIT	CP3880-1
7	8	M4 SCREW	CP3215-115
8	4	AKB SPRINGS	CP6518-4LBLL
9	4	PAD SUPPORT PLATE	CP4567-121



Issue No.	Alterations			Zone	Initials
	Date & No.	Particulars			
-	-	SEE SHEET 1 FOR ISSUE INFORMATION.	-	-	-

SCALE 1:1	SHEET 1 OF 2
DRAWN	CHRIS ARROWSMITH
APPROVED	
DERIVED FROM	
TITLE	1.625x1.375 4 POT FORGED RADI-CAL DESIGN
DRG NO.	CP5567-1CD