

B1 ASSEMBLY DRAWING

IF THIS DOCUMENT IS PRINTED IN HARDCOPY, IT IS FOR INFORMATION USE ONLY AND THEREFORE IS NOT SUBJECT TO UPDATING CONTROLS. ALWAYS REFER TO SOLIDWORKS VIEWER FOR LATEST ISSUE



THIS DRAWING IS CONFIDENTIAL AND IS SUPPLIED ON THE EXPRESS CONDITION THAT IT SHALL NOT BE LOANED OR COPIED OR DISCLOSED TO ANY OTHER PERSON OR USED FOR ANY OTHER PURPOSE WITHOUT THE WRITTEN CONSENT OF AP RACING LTD.



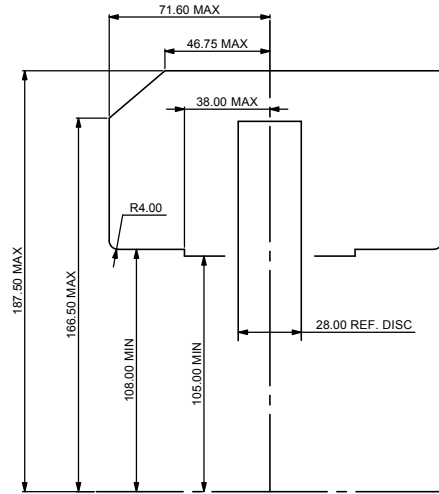
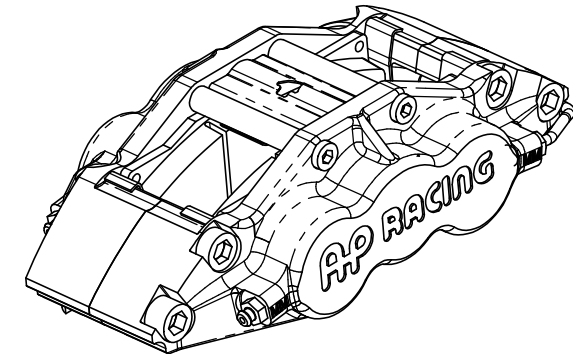
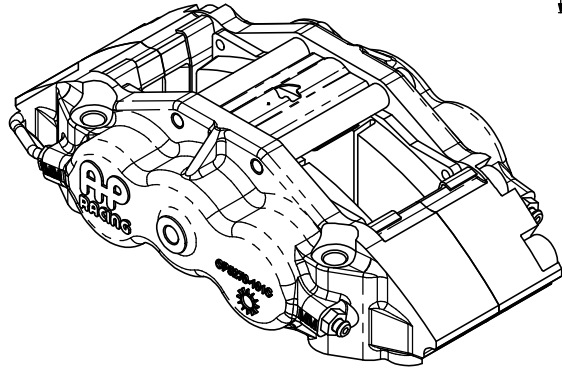
AP Racing
Whelr Road
Coventry
CV3 4LB
Tel: +44 024 7663 9595
Fax: +44 024 7663 9559
e-mail: sales@apracing.co.uk
Web site: HTTP://www.apracing.com

CALIPER SPECIFICATION

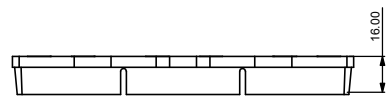
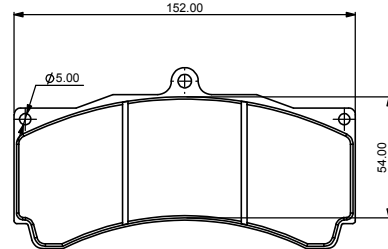
BORE SIZE	1.57"/1.25"/1.0625" DIFFERENTIAL
PISTON AREA PER PAD	25.03 SQ. CM
DISC DIA. MAX.	330.00
DISC THICKNESS MAX.	28.00
DISC THICKNESS MIN (WORN CONDITIONS)	26.00
HYDRAULIC FEED	M10 X 1.0
DRY WEIGHT (LESS PADS)	2.4kg
PAD FAMILY	CP5070
EFFECTIVE RADIUS (ON DIA. 330.00 DISC)	139.00
'P' DIMN	60.35
OFFSET	46.86
'C' DIMN	
MTG. HOLE CENTRES 'D' DIMN	152.00
PAD FRICTION MATERIAL	FLUID RESISTANT BLACK PAINT
MIN THICKNESS	2.50
TIGHTENING TORQUES	BLEED SCREW: 17 Nm HYDRAULIC FEED: 25Nm PAD RETENTION: 13.1Nm
CORROSION PROTECTION	FINISH - ALUMINIUM BODY BOOT TYPE DIRT SEALS
MAX OPERATING PRESSURE	80 BAR

CALIPER IDENTIFICATION CHART

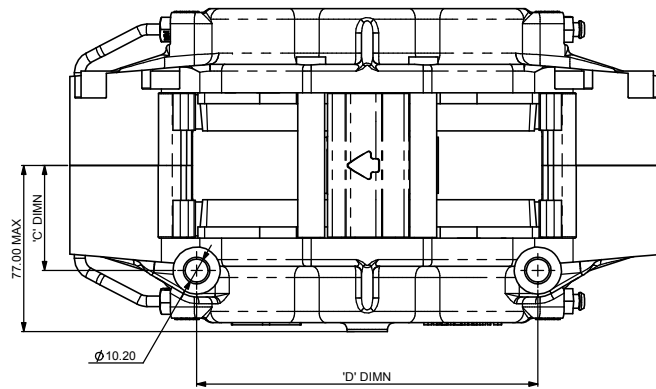
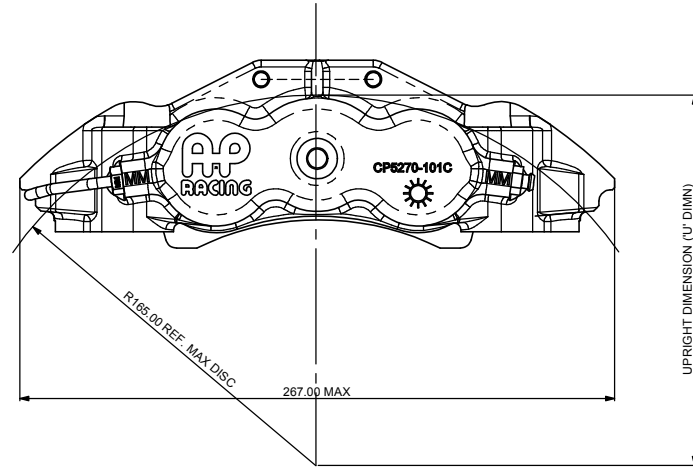
RHT	RIGHT HAND TRAILING (BEHIND AXLE)
LHT	LEFT HAND TRAILING (BEHIND AXLE)
RHL	RIGHT HAND LEAD (IN FRONT OF AXLE)
LHL	LEFT HAND LEAD (IN FRONT OF AXLE)



CALIPER RADIAL PROFILE AS FITTED ON Ø DISC



CP5070 PAD FAMILY
PAD AREA - 77.2 SQ. CM



PART NUMBERING CONVENTION

PART NUMBER	DESCRIPTION
CP5570-802S4	RHT- SIDE FEED - 4LB ANTI KNOCK BACK SPRING
CP5570-803S4	LHT- SIDE FEED - 4LB ANTI KNOCK BACK SPRING
CP5570-804S4	RHL- SIDE FEED - 4LB ANTI KNOCK BACK SPRING
CP5570-805S4	LHL- SIDE FEED - 4LB ANTI KNOCK BACK SPRING

REV	Alterations			Zone	Initials
	Date & No.	Particulars	#		
1	06/09/01 R0846	FIRST ISSUE	#	DH	#
2	06/03/02 R4010348	PL DIMN 80.35 WAS 80.95	#	DH	#
3	11/09/02 RAC10760	PISTON AREA PER PAD NOTE CLARIFIED	N3	TTF	#
4	06/01/03 R1139	810/11/12/13 DETAILS ADDED ON SHEET 2	#	GD	#
5	07/05/10 R3277	CALIPER SPECIFICATION TABLE: PAD RETENTION - 2 X FRICTION RETAINED PINS DELETED. PAD RETENTION: 13.1Nm ADDED TO TIGHTENING TORQUES.	L1-4	NC	#

SCALE 1:1	SHEET 1 OF 2
DRAWN	David Hamblin
APPROVED	
DERIVED FROM	
TITLE	CALIPER INSTALLATION DRAWING 330 MAX X 28 DISC INSTALLATIONS
DRG NO.	CP5570-1CD

B1 ASSEMBLY DRAWING

IF THIS DOCUMENT IS PRINTED IN HARDCOPY, IT IS FOR INFORMATION USE ONLY AND THEREFORE IS NOT SUBJECT TO UPDATING CONTROLS. ALWAYS REFER TO SOLIDWORKS VIEWER FOR LATEST ISSUE



THIS DRAWING IS CONFIDENTIAL AND IS SUPPLIED ON THE EXPRESS CONDITION THAT IT SHALL NOT BE LOANED OR COPIED OR DISCLOSED TO ANY OTHER PERSON OR USED FOR ANY OTHER PURPOSE WITHOUT THE WRITTEN CONSENT OF AP RACING LTD.

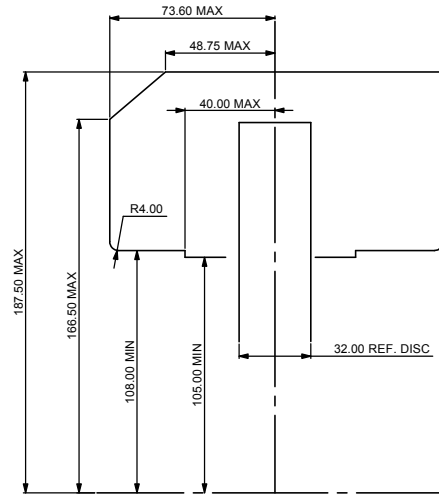
AP RACING
 AP Racing
 Wheler Road
 Coventry
 CV3 4LB
 Tel: +44 024 7663 9595
 Fax: +44 024 7663 9559
 e-mail: sales@apracing.co.uk
 Web site: HTTP://www.apracing.com

CALIPER SPECIFICATION

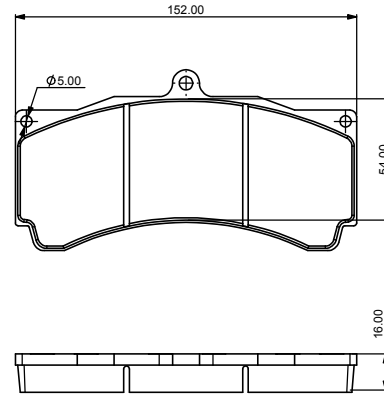
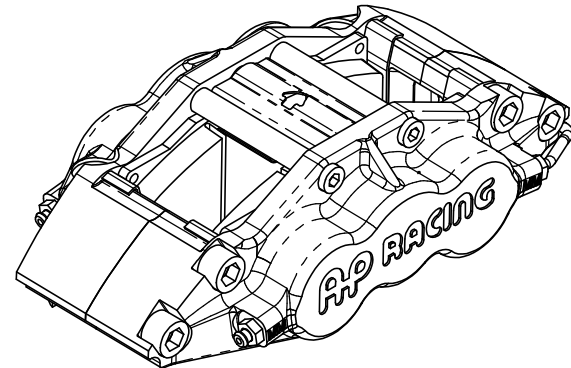
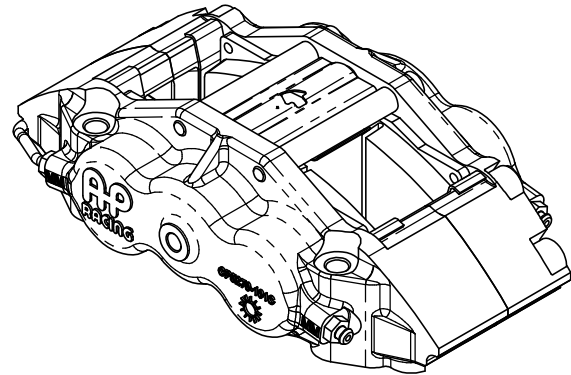
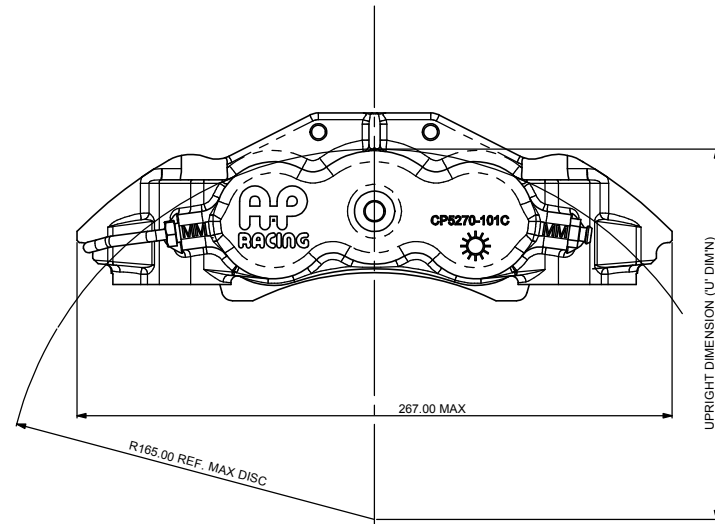
BORE SIZE	1.57" / 1.25" / 1.0625" DIFFERENTIAL
PISTON AREA PER PAD	25.03 SQ. CM
DISC DIA. MAX.	330.00
DISC THICKNESS MAX.	32.00
DISC THICKNESS MIN. (WORN CONDITION)	30.00
HYDRAULIC FEED	M10 X 1.0
DRY WEIGHT (LESS PADS)	2.5Kg
PAD FAMILY	CP5070
EFFECTIVE RADIUS (ON DIA. 330.00 DISC)	139.00
'P' DIMN	60.35
OFFSET 'C' DIMN	48.86
MTG. HOLE CENTRES 'D' DIMN	152.00
PAD FRICTION MATERIAL MIN THICKNESS	2.50
TIGHTENING TORQUES	BLEED SCREW: 17 Nm HYDRAULIC FEED: 25Nm PAD RETENTION: 13.1Nm
CORROSION PROTECTION	FLUID RESISTANT BLACK PAINT FINISH - ALUMINIUM BODY BOOT TYPE DIRT SEALS
MAX OPERATING PRESSURE	80 BAR

CALIPER IDENTIFICATION CHART

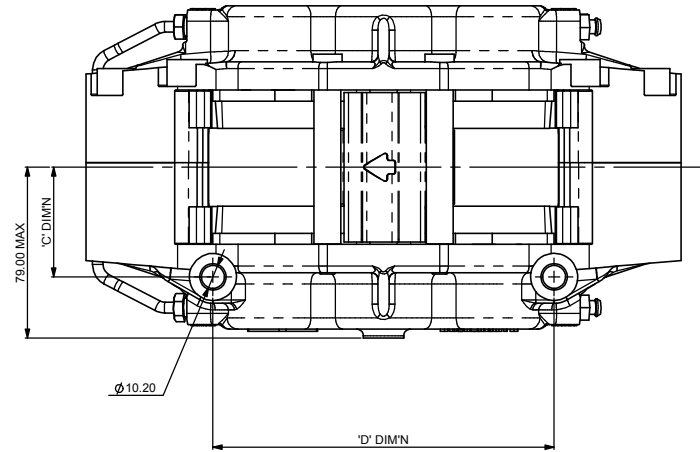
RHT	RIGHT HAND TRAILING (BEHIND AXLE)
LHT	LEFT HAND TRAILING (BEHIND AXLE)
RHL	RIGHT HAND LEAD (IN FRONT OF AXLE)
LHL	LEFT HAND LEAD (IN FRONT OF AXLE)



CALIPER RADIAL PROFILE AS FITTED ON Ø 330.0 DISC



CP5070 PAD FAMILY
 PAD AREA - 77.2 SQ. CM



PART NUMBERING CONVENTION

PART NUMBER	DESCRIPTION
CP5570-810S4	RHT- SIDE FEED - 4LB ANTI KNOCK BACK SPRING
CP5570-811S4	LHT- SIDE FEED - 4LB ANTI KNOCK BACK SPRING
CP5570-812S4	RHL- SIDE FEED - 4LB ANTI KNOCK BACK SPRING
CP5570-813S4	LHL- SIDE FEED - 4LB ANTI KNOCK BACK SPRING

Alterations		Zone	Initials
Date & No.	Particulars		
#	SEE SHEET 1	#	#

SCALE 1:1	SHEET 1 OF 2
DRAWN David Hamblin	
APPROVED	
DERIVED FROM	
TITLE	CALIPER INSTALLATION DRAWING
	330 MAX X 28 DISC INSTALLATIONS
DRG NO.	CP5570-1CD