

A1 INSTALLATION DRAWING

IF THIS DOCUMENT IS PRINTED IN HARDCOPY, IT IS FOR INFORMATION USE ONLY AND THEREFORE IS NOT SUBJECT TO UPDATING CONTROLS. ALWAYS REFER TO SOLIDWORKS VIEWER FOR LATEST ISSUE



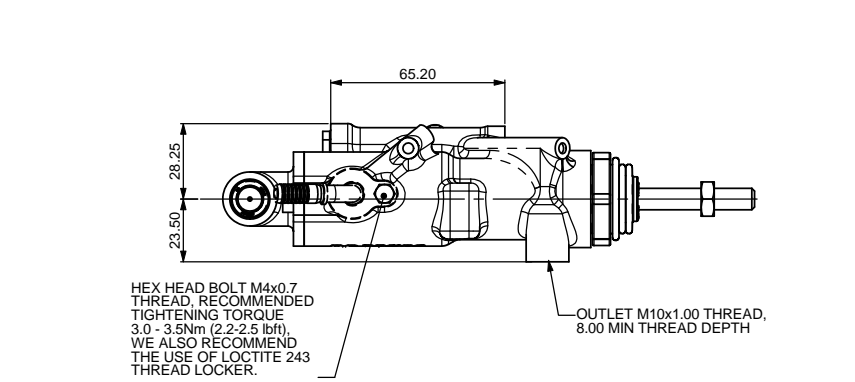
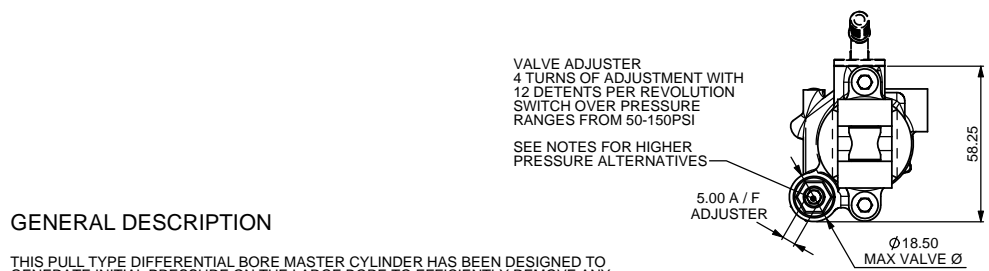
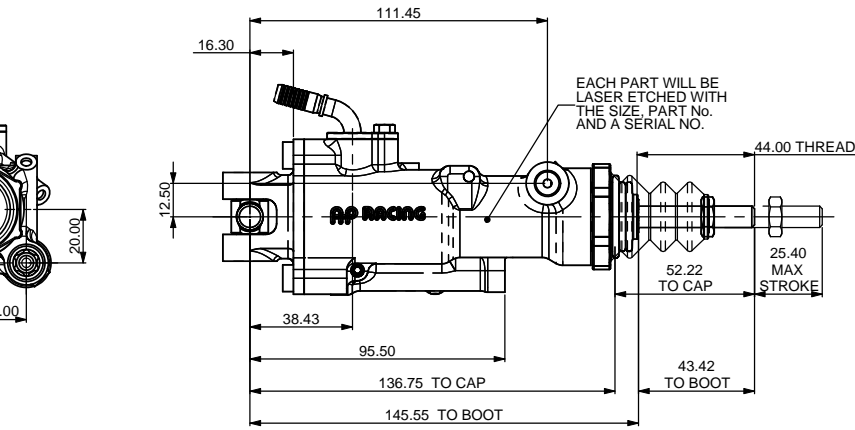
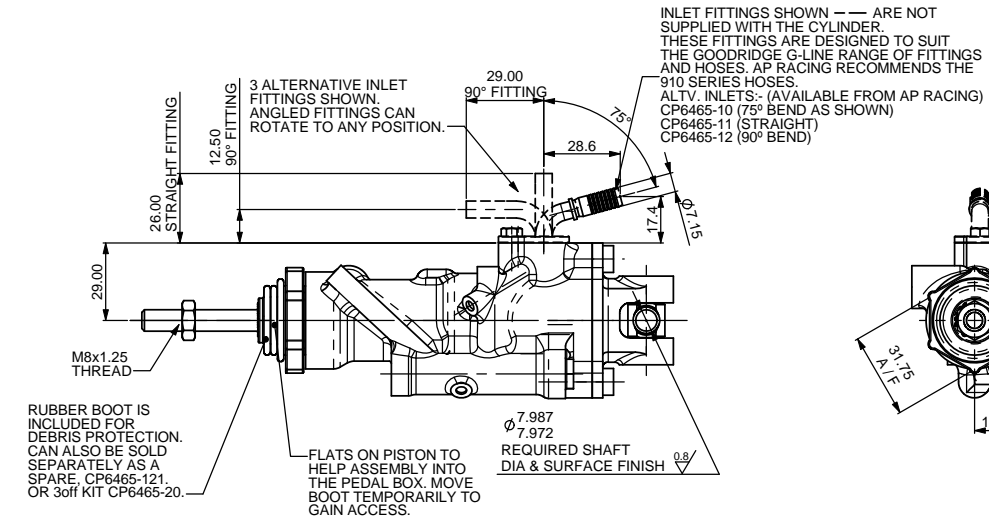
THIS DRAWING IS CONFIDENTIAL AND IS SUPPLIED ON THE EXPRESS CONDITION THAT IT SHALL NOT BE LOANED OR COPIED OR DISCLOSED TO ANY OTHER PERSON OR USED FOR ANY OTHER PURPOSE WITHOUT THE WRITTEN CONSENT OF AP RACING LTD.

AP RACING

AP Racing
Wheler Road
Coventry
CV3 4LB

Tel: +44 (0) 24 7663 9595
Fax: +44 (0) 24 7663 9559
e-mail: engineering@apracings.co.uk
Web site: <http://www.apracings.com>

© AP Racing Ltd. 2005



GENERAL DESCRIPTION

THIS PULL TYPE DIFFERENTIAL BORE MASTER CYLINDER HAS BEEN DESIGNED TO GENERATE INITIAL PRESSURE ON THE LARGE BORE TO EFFICIENTLY REMOVE ANY SYSTEM LOSSES (DEAD BAND) SUCH AS SEAL SQUASH & KNOCKBACK. AT A SET PRESSURE THE VALVE OPENS SWITCHING PRESSURE GENERATION TO THE SMALL BORE WHERE IT OPERATES AS NORMAL WITH FULL MODULATION OF THE BRAKE AVAILABLE WITHOUT THE VALVE SWITCHING BACK. THE CYLINDER IS MOUNTED VIA THE NEEDLE ROLLER BEARING CLEVIS AT THE REAR OF THE CYLINDER AND SUITS OUR HIGH EFFICIENCY AND LOW HYSTERESIS BALANCE BAR.

ESTIMATED WEIGHT - 500g

PART NUMBER	CORRECTED SMALL BORE SIZES FOR CALCULATIONS	REFERENCE DIMS		
		SMALL BORE Ø	PISTON Ø	AREA
CP5898-202PRME	Ø20.2 (0.795")	25.4	15.60	318.26
CP2898-212PRME	Ø21.2 (0.835")	25.4	14.00	355.52
CP5898-218PRME	Ø21.8 (0.858")	25.4	13.00	376.68
CP5898-237PRME	Ø23.7 (0.933")	25.4	9.25	442.00

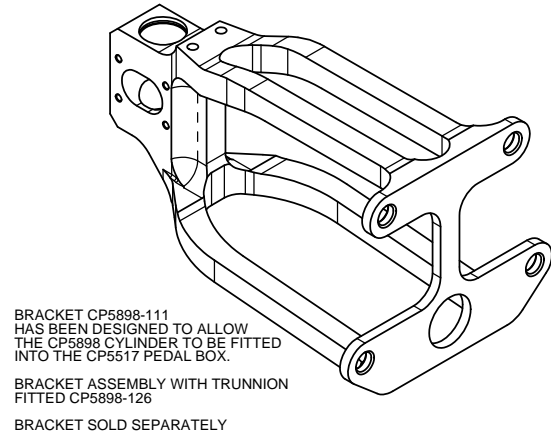
ALTERNATIVE ASSEMBLIES ARE AVAILABLE FOR SPECIAL APPLICATIONS WHERE A HIGHER SWITCH OVER PRESSURE IS REQUIRED.

PART NUMBERS WITH SWITCH 'H' ARE INSTALLED WITH A HIGH RATED VALVE GIVING A SWITCHING PRESSURE OF 70-360 PSI (5-25 BAR)

EXAMPLE PART NUMBER - CP5898-212PRME_H

NOTE: OPTIMUM PULL TYPE CYLINDER DESIGN MEANS THAT TO USE STANDARDS SEAL SIZES AND BORE SIZES, THERE WOULD BE A SLIGHT VARIATION FROM STANDARD CYLINDERS. THE SIZES WERE ALSO ADJUSTED TO GIVE EQUAL STEPS BETWEEN THE DIFFERENT SIZES.

THE TABLE SHOWS THE MASTER CYLINDER PART NUMBERS AND A BORE SIZE THAT WOULD REFLECT A PUSH TYPE CYLINDER. THE CORRECTED BORE SIZE. THE PART NUMBER ALSO REFLECTS THE CYLINDER SIZE.



AP RACING RECOMMEND WHERE POSSIBLE THAT CYLINDERS ARE RESEALED AT AP RACING DUE TO THE COMPLEXITY OF THE ASSEMBLY.

Issue No.	Alterations			Zone	Initials
	Date & No.	Particulars			
1	10/05/12 B4872	FIRST ISSUE			SAT
2	18/05/12 B4872	CP5898-126 BRACKET ASSEMBLY ADDED			SAT

SCALE 1:1 SHEET 1 OF 1

DRAWN Steve Thomas

APPROVED

DERIVED FROM

TITLE
PULL TYPE DIFFERENTIAL BORE M/CYL INSTALLATION

DRG NO. CP5898-1CD