

# A1 INSTALLATION DRAWING

IF THIS DOCUMENT IS PRINTED IN HARD COPY, IT IS FOR INFORMATION USE ONLY AND THEREFORE IS NOT SUBJECT TO UPDATING CONTROLS. ALWAYS REFER TO SOLIDWORKS VIEWER FOR LATEST ISSUE



THIS DRAWING IS CONFIDENTIAL AND IS SUPPLIED ON THE EXPRESS CONDITION THAT IT SHALL NOT BE LOANED OR COPIED OR DISCLOSED TO ANY OTHER PERSON OR USED FOR ANY OTHER PURPOSE WITHOUT THE WRITTEN CONSENT OF AP RACING LTD.

**AP RACING**

© AP Racing Ltd. 2002  
 AP Racing  
 Wheler Road  
 Coventry  
 CV3 4LB

Tel: +44 024 7663 9595 e-mail: sales@ap racing.co.uk  
 Fax: +44 024 7663 9559 Web site: HTTP://www.ap racing.com

SUFFIX TO DISC PART NUMBERS:

- P PLAIN, NO GROOVES
  - CGnn CURVED GROOVES
  - GA SETS OF 2 'J HOOK' GROOVES.
- NUMBER OF SETS IS EQUAL TO NUMBER OF MOUNTINGS.

SEE FIGURES 1 AND 2 FOR EXAMPLES OF THE GROOVE PATTERNS AVAILABLE.

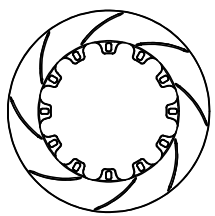


FIG. 1: CG8

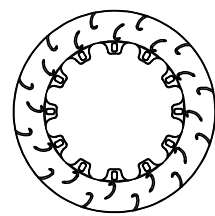
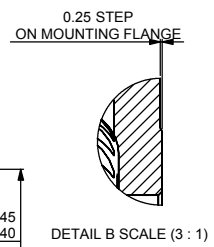
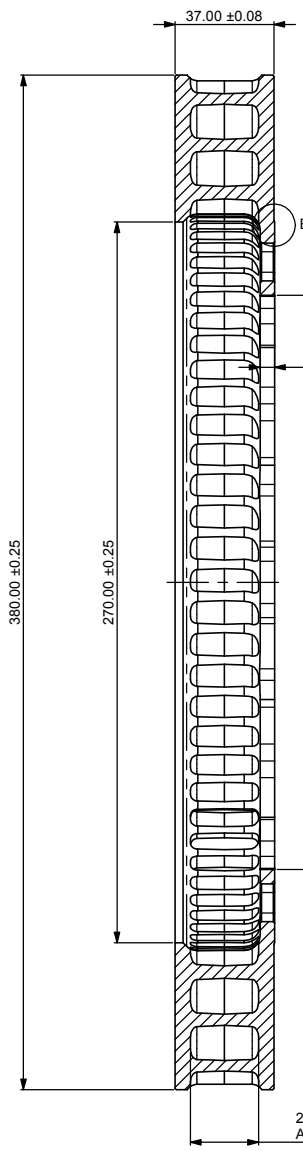
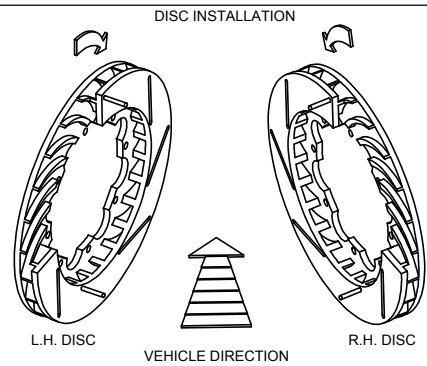
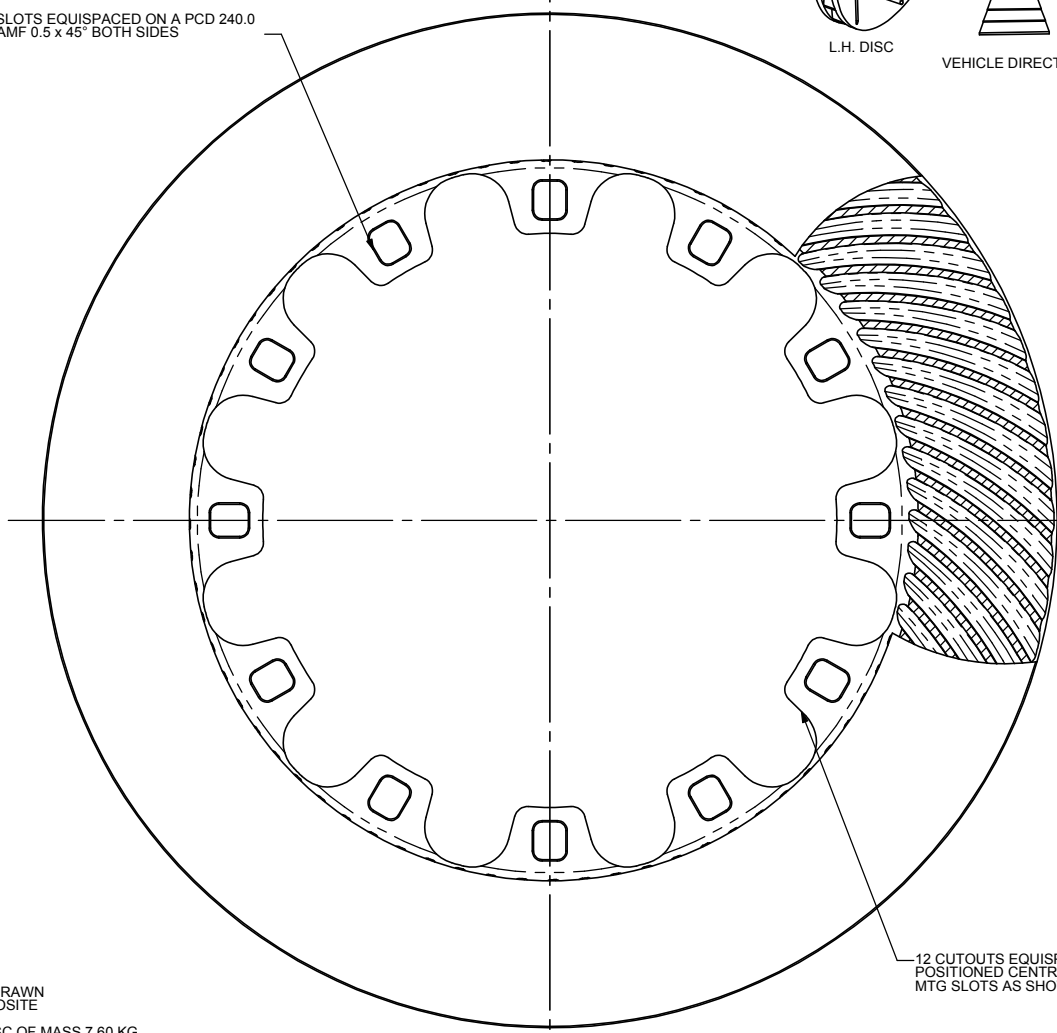


FIG. 2: GA



12 SLOTS EQUISPACED ON A PCD 240.0  
CHAMF 0.5 x 45° BOTH SIDES



12 CUTOUTS EQUISPACED AND POSITIONED CENTRALLY BETWEEN MTG SLOTS AS SHOWN

### DISC PART NUMBERS

- CP6072-108 RH AS DRAWN
- CP6072-109 LH OPPOSITE

THIS IS A 72 VANES DISC OF MASS 7.60 KG.

THIS DISC WAS DESIGNED TO WORK WITH D55 DEPTH PADS AND CP4015-126MD BOBBINS.

FOR DISC MOUNTING TECHNIQUES, BEDDING PROCEDURE AND DISC COOLING RECOMMENDATIONS SEE AP RACING BRAKE DISC CATALOGUE.

Issue No.		Alterations		Zone	Initials
Date & No.	Particulars				
1	12/11/03	FIRST ISSUE			GM
2	06/05/04 B3748/09	MOUNTING FLANGE 5.45/5.40 WAS 5.65/5.60 AND BOBBINS CP4015-126MD WERE CP4015-128MJ		G3	GM

SCALE 1:1      SHEET 1 OF 1

DRAWN: Gael Mace

APPROVED:

DERIVED FROM:

TITLE  
**VENTILATED DISC  
 INSTALLATION DRAWING**

DRG NO. cp6072-108-9cd