

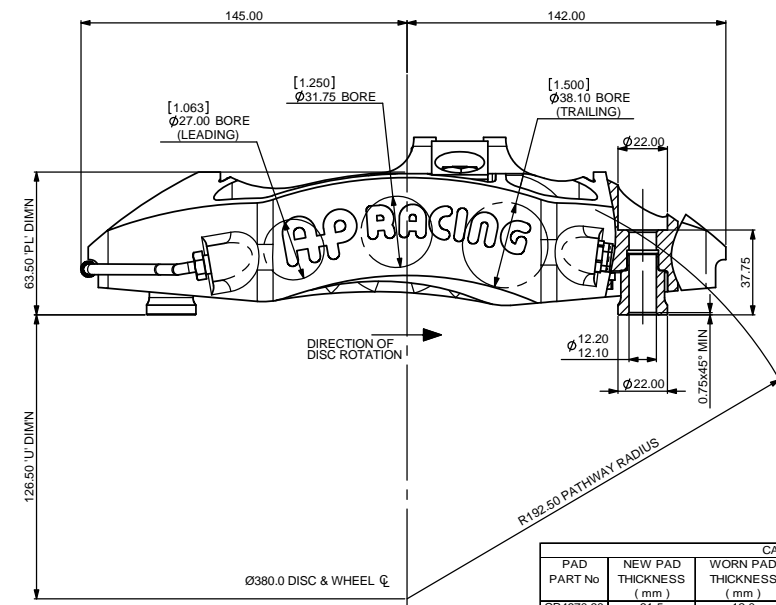
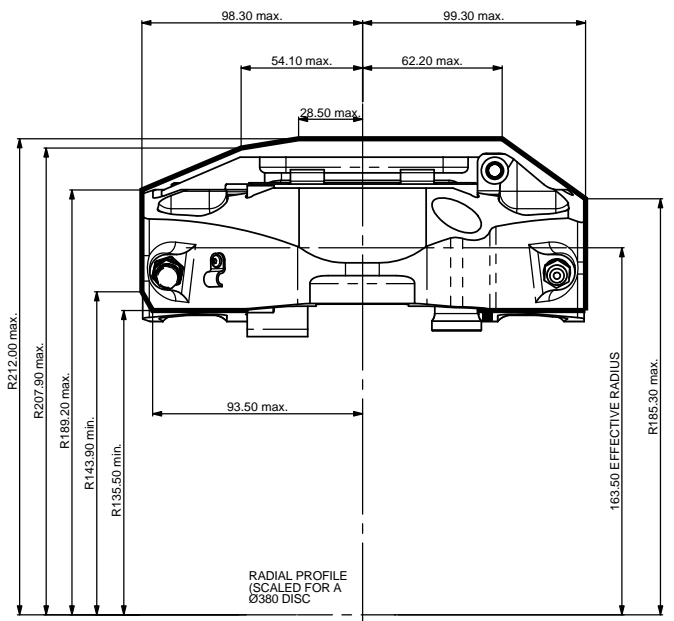
B1 INSTALLATION DRAWING

IF THIS DOCUMENT IS PRINTED IN HARDCOPY, IT IS FOR INFORMATION USE ONLY AND THEREFORE IS NOT SUBJECT TO UPDATING CONTROLS. ALWAYS REFER TO SOLIDWORKS VIEWER FOR LATEST ISSUE



THIS DRAWING IS CONFIDENTIAL AND IS SUPPLIED ON THE EXPRESS CONDITION THAT IT SHALL NOT BE LOANED OR COPIED OR DISCLOSED TO ANY OTHER PERSON OR USED FOR ANY OTHER PURPOSE WITHOUT THE WRITTEN CONSENT OF AP RACING LTD.

AP Racing
Wheler Road
Coventry
CV3 4LB
Tel: +44 024 7663 9595
Fax: +44 024 7663 9559
e-mail: sales@apracing.co.uk
Web site: HTTP://www.apracing.com



GENERAL DESCRIPTION:
6 PISTON DIFFERENTIAL BORE CALIPER TO SUIT UP TO Ø380 x 37 DISC

APPLICATION:
FIA GT1

TECHNICAL INFORMATION:
TOTAL PISTON AREA: 50.1cm²
PISTON MATERIAL: TITANIUM
BODY MATERIAL: ALUMINIUM ALLOY
ASSEMBLY WEIGHT: 2.8KG

INSTALLATION INFORMATION:
DISC & CALIPER MOUNTING TOLERANCES TO BE SUCH THAT THE DISC IS CENTRAL TO THE CALIPER TO WITHIN ±0.5mm.
CALIPER TO BE MOUNTED WITHIN ±15° FROM VERTICAL.
DISC DIAMETRAL CLEARANCE SHOULD BE 2.5mm NOM. FROM DISC O.D. TO PATHWAY.

KEY TO DIMENSIONS:
P'L: TOP OF PAD MATERIAL TO MOUNTING BOSS FACE WITH PAD SITTING DOWN ON LEADS.
U: WHEEL CENTRE LINE TO CALIPER MOUNTING BOSS FACE (DISC Ø/2)-DIMENSION 'PL'.

STANDARD CALIPER PART NUMBERS - TITANIUM PISTONS
CP6080-257MP - RIGHT HAND TRAILING (BEHIND AXLE)
CP6080-57MP - LEFT HAND TRAILING (BEHIND AXLE)
CP6080-457MP - RIGHT HAND LEADING (IN FRONT OF AXLE)
CP6080-557MP - LEFT HAND LEADING (IN FRONT OF AXLE)

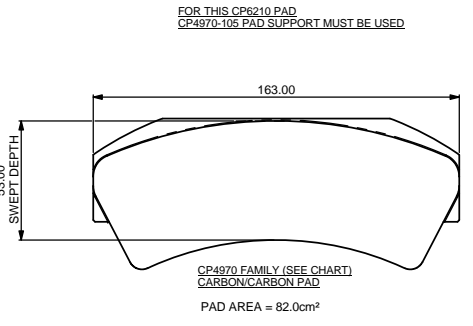
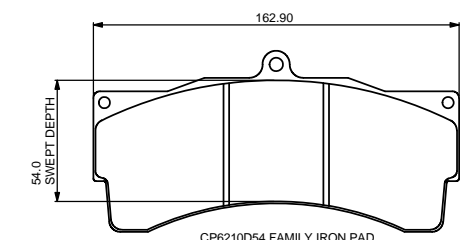
ALTERNATIVE CALIPER PART NUMBERS - STAINLESS STEEL PISTONS
CP6080-257LP - RIGHT HAND TRAILING (BEHIND AXLE)
CP6080-557LP - LEFT HAND TRAILING (BEHIND AXLE)
CP6080-457LP - RIGHT HAND LEADING (IN FRONT OF AXLE)
CP6080-557LP - LEFT HAND LEADING (IN FRONT OF AXLE)

P' SUFFIX DENOTES CALIPER WITH 'CLIP-IN' TYPE PISTONS.
FOR ADDITION OF 'CLIP-IN' PISTON CAPS SEE CP6080-1PCD DRAWING.
M' SUFFIX DENOTES TITANIUM PISTONS
L' SUFFIX DENOTES STAINLESS STEEL PISTONS

FOR IRON SPECIFIC CALIPER ASSEMBLIES ADD SUFFIX 1R TO PART NUMBERS ABOVE e.g. CP6080-257MP1R

SEE SHEET 2 FOR SPARE PARTS LIST

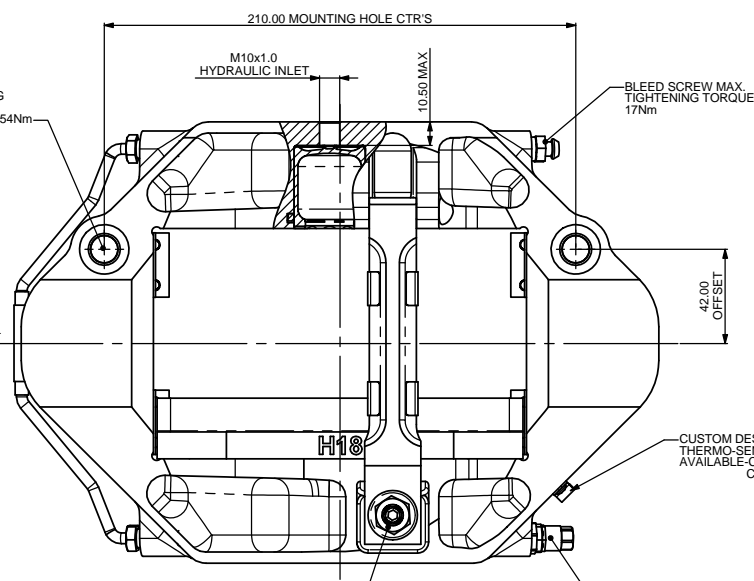
CARBON / CARBON PAD DATA						
PAD PART No	NEW PAD THICKNESS (mm)	WORN PAD THICKNESS (mm)	TOTAL PAD VOLUME (cm ³)	TOTAL PAD MASS (Kg)	PAD WEAR VOLUME (cm ³)	PAD WEAR MASS (Kg)
CP4970-30	31.5	12.0	264	0.474	159	0.285
CP4970-28	27	12.0	229	0.410	122	0.218



TYPICAL MTG TIGHTENING TORQUE, FOR GUIDANCE ONLY: M12 - 65Nm & M10 - 54Nm

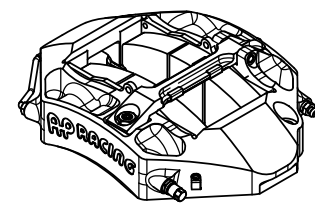
WHEN RUNNING CP6210 IRON PADS THE PAD SUPPORTS MUST BE TURNED AROUND. THE LETTERS 'I' ON THE PAD SUPPORTS MUST FACE EACH OTHER AS SHOWN. APR RECOMMEND THE USE OF A THREADLOCKER (LOCTITE 243 OR SIMILAR) ON THE PAD SUPPORT RETAINING SCREWS.

CARBON SET-UP = LETTERS 'C' FACE EACH OTHER
IRON SET-UP = LETTERS 'I' FACE EACH OTHER



CUSTOM DESIGNED CALIPER BODY THERMO-SENSOR (PT100 TYPE) AVAILABLE-CP6282-2 (RH) CP6282-3 (LH)

DRY-BREAK FITTINGS ARE AVAILABLE TIGHTENING TORQUE 13Nm
PART No's CP6300-5 FITTING (CALIPER)
CP6300-7 FITTING (BLEED SYSTEM)
CP6300-8 SPARE DUST CAP AND SEAL
APPLY LOCTITE 270 TO THREAD UP ASSEMBLY



Issue No	Alterations		
	Date & No.	Particulars	Zone / Initials
1	26/01/05 B3987	FIRST ISSUE	JH
2	23/05/06 B4635	EXPLODED VIEWS AND SPARE PARTS CHART ADDED TO NEW SHEET 2. ALTY. PAD SUPPORT VIEW AND NOTE ADDED IN LINE WITH OTHER CALIPERS	DR
3	09/05/08 B5180	WEAR PLATE ADDED TO CENTRE ARM	DR
4	05/12/11 B6338	'1R' IRON SPECIFIC CALIPER PART NUMBERS ADDED	SAT
5	23/08/13 B6883	STAINLESS STEEL PISTON ASSEMBLIES ADDED	SAT

SCALE 1:1 SHEET 1 OF 2

DRAWN *Peritago*

APPROVED

DERIVED FROM

TITLE
Q/R GT CALIPER
INSTALLATION DRAWING

DRG NO. CP6080-1CD

B1 INSTALLATION DRAWING

IF THIS DOCUMENT IS PRINTED IN HARDCOPY, IT IS FOR INFORMATION USE ONLY AND THEREFORE IS NOT SUBJECT TO UPDATING CONTROLS. ALWAYS REFER TO SOLIDWORKS VIEWER FOR LATEST ISSUE

FIRST ANGLE PROJECTION

THIS DRAWING IS CONFIDENTIAL AND IS SUPPLIED ON THE EXPRESS CONDITION THAT IT SHALL NOT BE LOANED OR COPIED OR DISCLOSED TO ANY OTHER PERSON OR USED FOR ANY OTHER PURPOSE WITHOUT THE WRITTEN CONSENT OF AP RACING LTD.

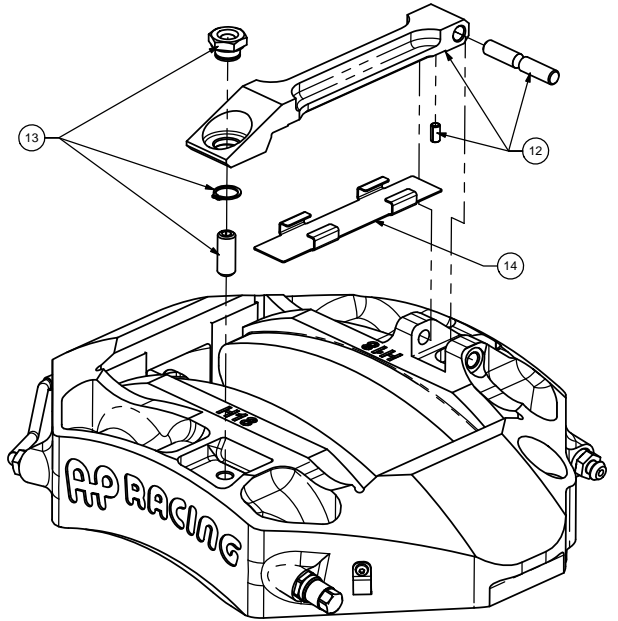
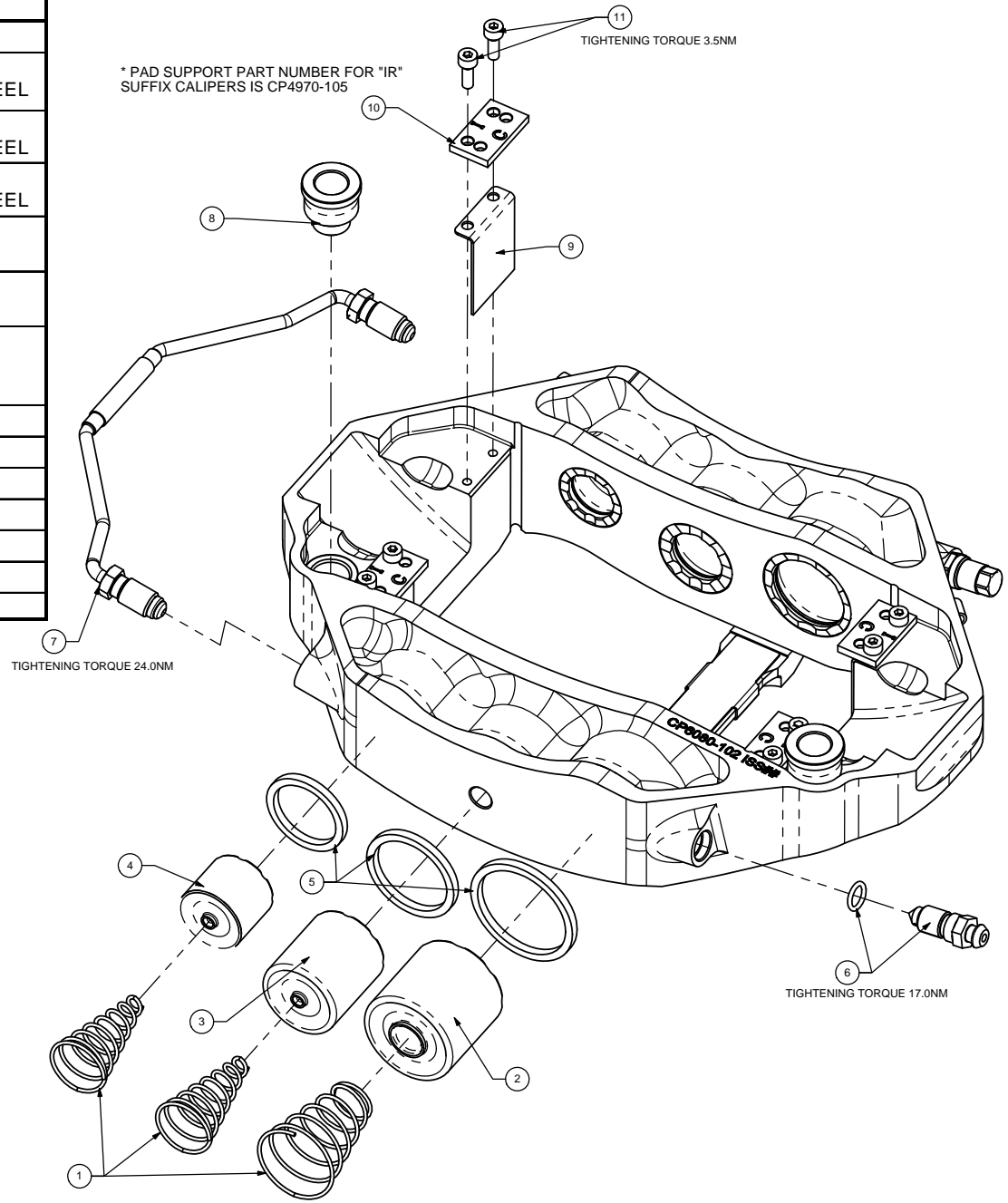
AP RACING
 AP Racing
 Wheler Road
 Coventry
 CV3 4LB
 Tel: +44 024 7663 9595
 Fax: +44 024 7663 9559
 e-mail: sales@apracings.co.uk
 Web site: HTTP://www.apracings.com

SPARE PARTS LIST

REF	QTY / CALIPER	PART NO.	DESCRIPTION
1	1	CP6518-7LBSSL	7.00LB AKB SPRING KIT
2	2	CP6060-121 CP6096-116	Ø1.50" PISTON TITANIUM Ø1.50" PISTON STAINLESS STEEL
3	2	CP6060-120 CP6096-115	Ø1.25" PISTON TITANIUM Ø1.25" PISTON STAINLESS STEEL
4	2	CP6060-122 CP6096-114	Ø1.06" PISTON TITANIUM Ø1.06" PISTON STAINLESS STEEL
5	1	CP4518-CEJ	HIGH-TEMP SEAL KIT (6 SEALS)
6	1	CP3880-1	M10 BLEEDSCREW KIT (2 OFF O-RING & SCREW)
7	1	CP6060-6 OR CP6060-7	PIPE ASSEMBLY -6 FOR RHT & LHT -7 FOR RHL & LHL
8	2	CP4970-128	MOUNTING BOSS
9	4	CP6060-107	WEARPLATE
10	4	CP4970-142	PAD SUPPORT
11	8	CP3215-115	M4 SCREW
12	1	CP6080-20	QUICK RELEASE ARM KIT
13	1	CP5970-20	QUICK RELEASE STUD KIT
14	1	CP6080-106	WEAR PLATE

FOR CALIPER RE-CONDITIONING INFORMATION SEE AP RACING DATA SHEET P14.101

* PAD SUPPORT PART NUMBER FOR "IR" SUFFIX CALIPERS IS CP4970-105



Issue No.	Alterations		Zone	Initials
	Date & No.	Particulars		

SCALE 1:5	SHEET 2 OF 2
DRAWN	Peritaje
APPROVED	
DERIVED FROM	
TITLE	
Q/R GT CALIPER	
INSTALLATION DRAWING	
DRG NO.	CP6080-1CD