

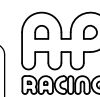
**B1** INSTALLATION DRAWING

IF THIS DOCUMENT IS PRINTED IN HARDCOPY, IT IS FOR INFORMATION USE ONLY AND THEREFORE IS NOT SUBJECT TO UPDATING CONTROLS. ALWAYS REFER TO SOLIDWORKS VIEWER FOR LATEST ISSUE



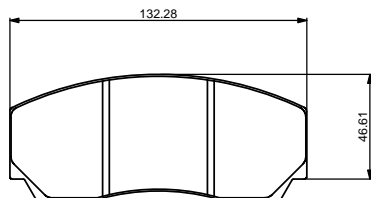
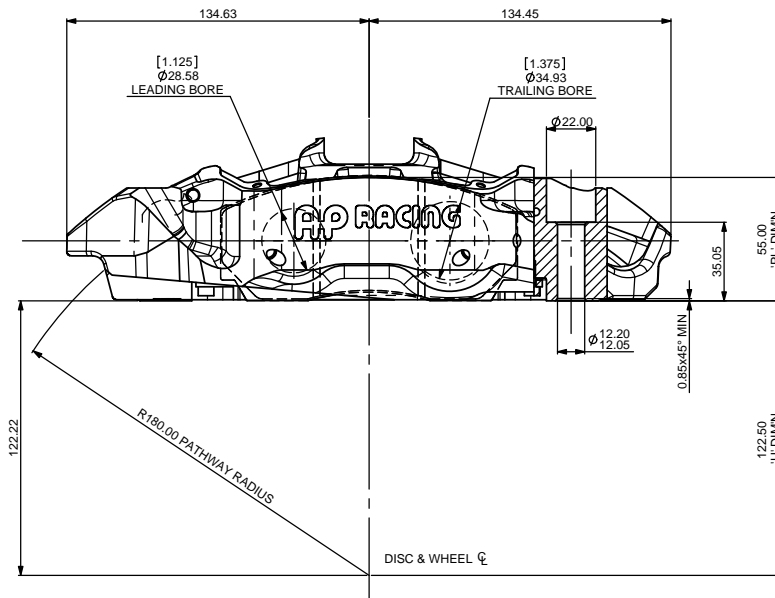
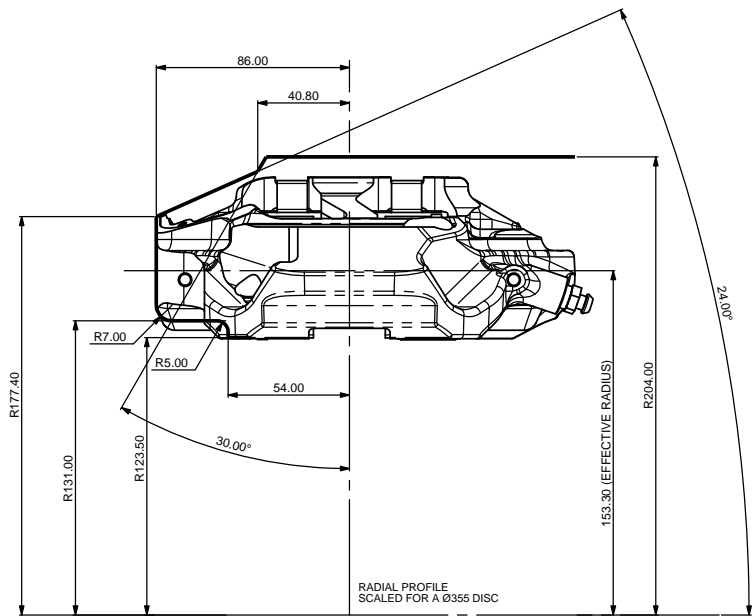
FIRST ANGLE PROJECTION

THIS DRAWING IS CONFIDENTIAL AND IS SUPPLIED ON THE EXPRESS CONDITION THAT IT SHALL NOT BE LOANED OR COPIED OR DISCLOSED TO ANY OTHER PERSON OR USED FOR ANY OTHER PURPOSE WITHOUT THE WRITTEN CONSENT OF AP RACING LTD.



AP Racing  
Wheler Road  
Coventry  
CV3 4LB  
Tel: +44 024 7663 9595  
Fax: +44 024 7663 9559  
e-mail: sales@apracings.co.uk  
Web site: HTTP://www.apracings.com

© AP Racing Ltd. 2005



CP6267D50 FAMILY IRON PAD  
PAD AREA:  
SLOTTED - 57.4cm<sup>2</sup>  
FULL AREA - 60.4cm<sup>2</sup>  
PAD THICKNESS - 25mm

GENERAL DESCRIPTION  
4 PISTON DIFFERENTIAL BORE CALIPER TO SUIT UP TO Ø355 x 32MM DISC

APPLICATION - TOURING CAR / GT / COMPETITION KIT FRONTS

TECHNICAL INFORMATION & INSTALLATION DATA  
TOTAL PISTON AREA - 31.9cm<sup>2</sup>  
PISTON MATERIAL - STAINLESS STEEL  
BODY MATERIAL - ALUMINIUM ALLOY  
HYDRAULIC CONNECTIONS: M10 x 1.0  
ASSEMBLY WEIGHT LESS PADS: 2.40 Kg (APPROX).

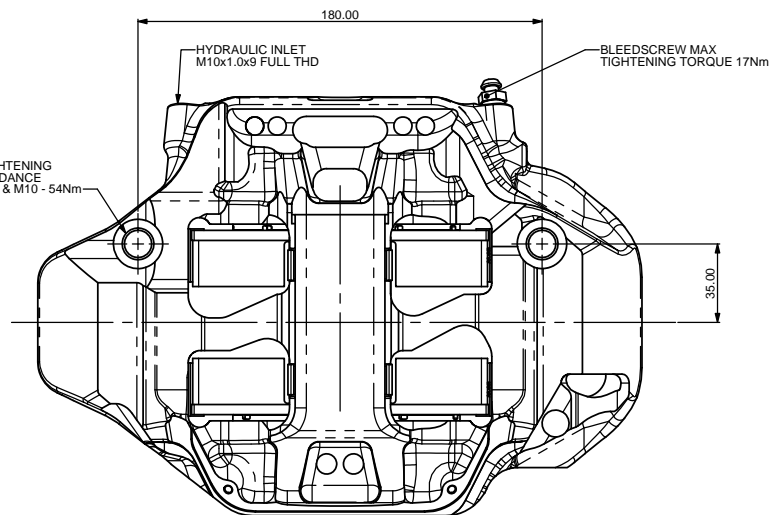
DISC & CALIPER MOUNTING TOLERANCES TO BE SUCH THAT THE DISC IS CENTRAL TO THE CALIPER TO WITHIN ±0.5 mm. CALIPER TO BE MOUNTED WITH IN ±15° FROM VERTICAL. DISC DIAMETRICAL CLEARANCE SHOULD BE 2.5 mm NOM FROM DISC O.D TO PATHWAY.

KEY TO DIMENSIONS:  
'PL': TOP OF PAD MATERIAL TO MOUNTING BOSS FACE WITH PAD SITTING DOWN ON LEDGE.  
'U': WHEEL CENTRE LINE TO CALIPER MOUNTING BOSS FACE. I.e. (DISC Ø/2) - DIMENSION 'PL'.

CALIPER PART NUMBERS  
CP6267-6SOL - RIGHT HAND TRAILING (BEHIND AXLE).  
CP6267-7SOL - LEFT HAND TRAILING (BEHIND AXLE).

NOTE: CALIPERS CAN BE USED IN A LEADING (IN FRONT OF AXLE) POSITION BY SWAPPING THE INLET ADAPTOR AND BLEED SCREW OVER.

TYPICAL MTG TIGHTENING TORQUE FOR GUIDANCE ONLY: M12 - 65Nm & M10 - 54Nm



Issue No.	Alterations			Zone	Initials
	Date & No.	Particulars			
1	23/10/12 B6647	FIRST ISSUE			SAT

SCALE 1:1	SHEET 1 OF 2
DRAWN	Steve Thomas
APPROVED	
DERIVED FROM	
TITLE 4 POT FORGED RADICAL BRAKE CALIPER	
DRG NO.	CP6267-11CD

# B1 INSTALLATION DRAWING

IF THIS DOCUMENT IS PRINTED IN HARDCOPY IT IS FOR INFORMATION USE ONLY AND THEREFORE IS NOT SUBJECT TO UPDATING CONTROLS. ALWAYS REFER TO SOLIDWORKS VIEWER FOR LATEST ISSUE



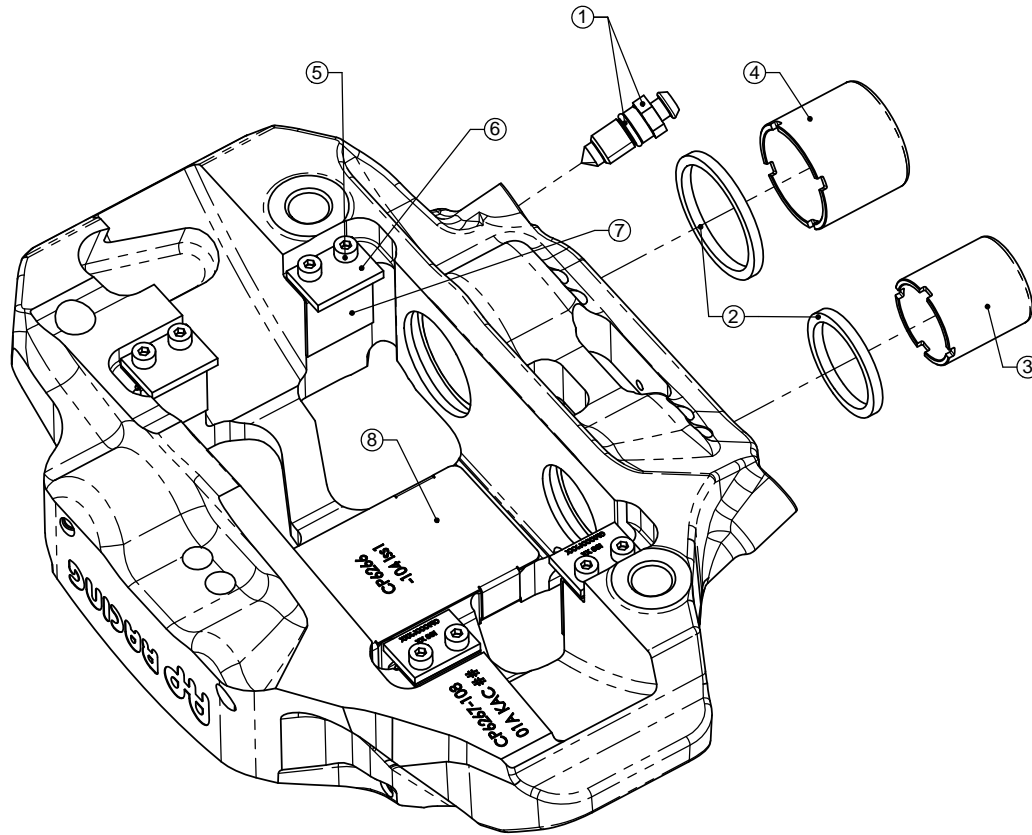
FIRST ANGLE PROJECTION

THIS DRAWING IS CONFIDENTIAL AND IS SUPPLIED ON THE EXPRESS CONDITION THAT IT SHALL NOT BE LOANED OR COPIED OR DISCLOSED TO ANY OTHER PERSON OR USED FOR ANY OTHER PURPOSE WITHOUT THE WRITTEN CONSENT OF AP RACING LTD.



AP Racing  
Wheler Road  
Coventry  
CV3 4LB  
Tel: +44 024 7663 9595  
Fax: +44 024 7663 9559  
e-mail: sales@apracing.co.uk  
Web site: HTTP://www.apracing.com  
© AP Racing Ltd. 2005

CP6267-6/7S7L SPARES			
REF	DESCRIPTION	PART NO.	QTY / ASSY
1	BLEEDSCREW & O-RING SEAL KIT	CP3880-1	1
2	SEAL KIT (4 SEALS)	CP8518-DG	1
3	Ø1.12" SST PISTON	CP6266-105	2
4	Ø1.37 SST PISTON	CP6266-106	2
5	M4 SOCKET HEAD CAP SCREWS	CP3215-115	8
6	PAD SUPPORTS	CP5870-108	4
7	ABUTMENT WEARPLATES	CP5760-105	4
8	PAD RETAINER WEAR PLATE	CP6266-104	1



Issue No.	Alterations		Zone	Initials
	Date & No.	Particulars		

SCALE 1:1	SHEET 2 OF 2
DRAWN	Steve Thomas
APPROVED	
DERIVED FROM	
TITLE 4 POT FORGED RADICAL BRAKE CALIPER	
DRG NO.	CP6267-11CD