

B1 INSTALLATION DRAWING

IF THIS DOCUMENT IS PRINTED IN HARD COPY, IT IS FOR INFORMATION USE ONLY AND THEREFORE IS NOT SUBJECT TO UPDATING CONTROLS. ALWAYS REFER TO SOLIDWORKS VIEWER FOR LATEST ISSUE



FIRST ANGLE PROJECTION

THIS DRAWING IS CONFIDENTIAL AND IS SUPPLIED ON THE EXPRESS CONDITION THAT IT SHALL NOT BE LOANED OR COPIED OR DISCLOSED TO ANY OTHER PERSON OR USED FOR ANY OTHER PURPOSE WITHOUT THE WRITTEN CONSENT OF AP RACING LTD.



AP Racing
Wheler Road
Coventry
CV3 4LB
Tel: +44 024 7663 9595
Fax: +44 024 7663 9559
e-mail: sales@apracing.co.uk
Web site: HTTP://www.apracing.com

GENERAL DESCRIPTION
6 PISTON DIFFERENTIAL BORE CALIPER TO SUIT UP TO A Ø380 x 35 IRON DISC.

APPLICATION:

TECHNICAL INFORMATION
TOTAL PISTON AREA: 50.1cm²
PISTON MATERIAL: STAINLESS STEEL
BODY MATERIAL: ALUMINIUM ALLOY
HYDRAULIC CONNECTIONS: M10 x 1.0
ASSEMBLY WEIGHT: 2.9Kg. (WITHOUT PADS)

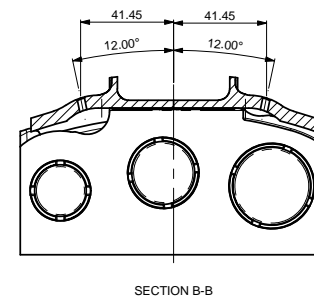
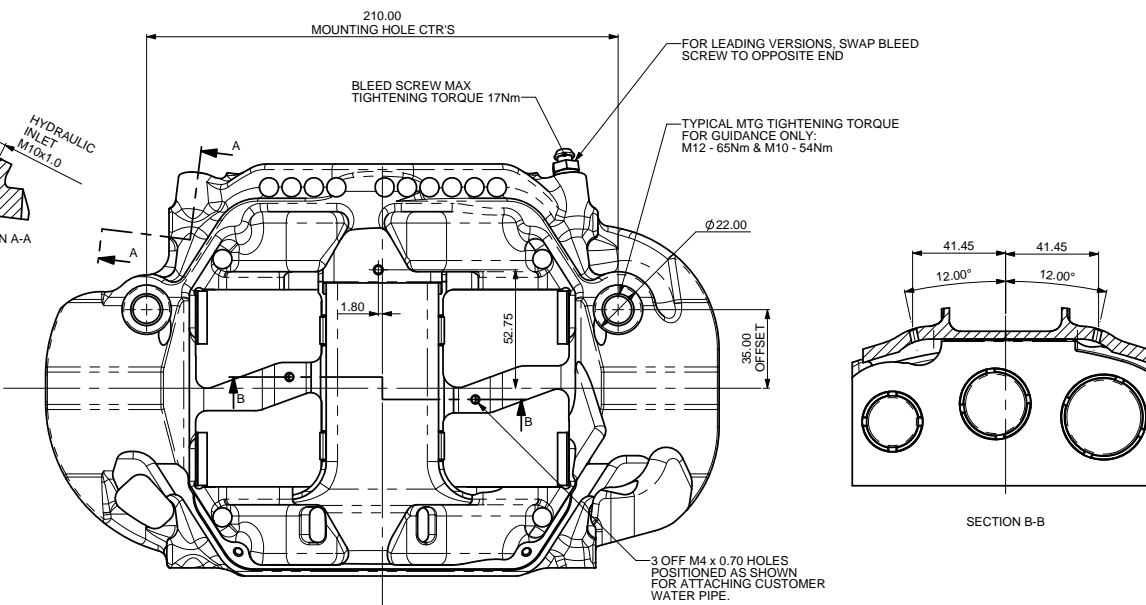
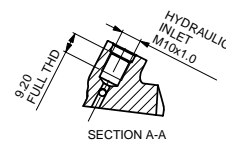
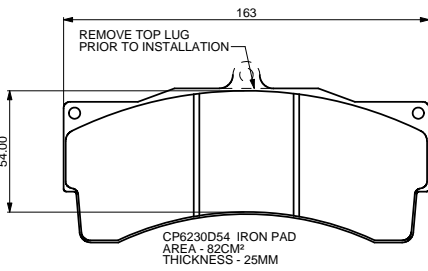
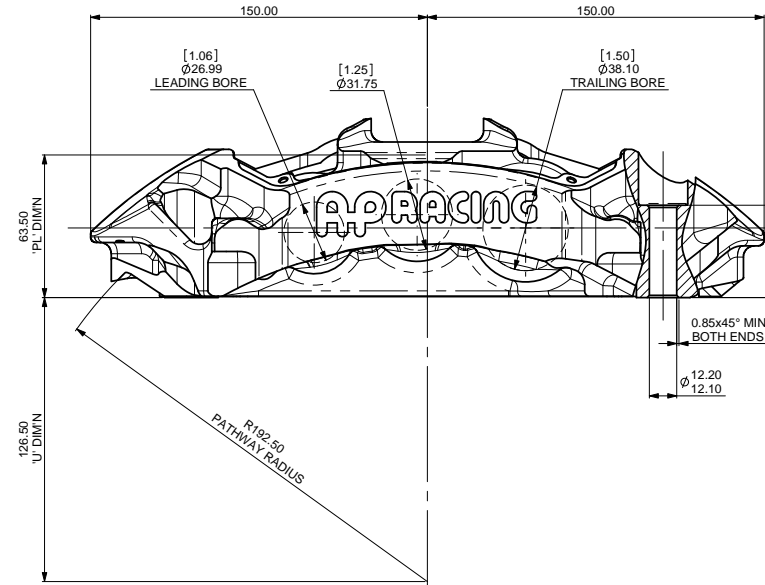
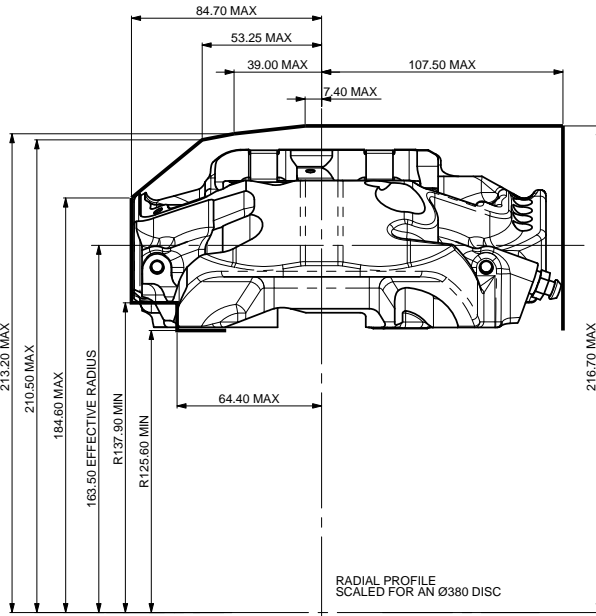
INSTALLATION INFORMATION
DISC & CALIPER MOUNTING TOLERANCES TO BE SUCH THAT THE DISC IS CENTRAL TO THE CALIPER TO WITHIN ±0.5mm.
CALIPER TO BE MOUNTED WITHIN ±15° FROM VERTICAL.
DISC DIAMETRAL CLEARANCE SHOULD BE 2.5mm NOM. FROM DISC OD TO PATHWAY.
BLEED SCREW MAX TIGHTENING TORQUE 17Nm

KEY DIMENSIONS
PL: TOP OF PAD MATERIAL TO MOUNTING BOSS FACE WITH PAD SITTING DOWN ON LEDGE.
U: WHEEL CENTRE LINE TO CALIPER MOUNTING BOSS FACE (DISC Ø/2)-DIMENSION 'PL'
EFFECTIVE RADIUS: DISTANCE FROM WHEEL CENTRE LINE TO NOMINAL PISTON CENTRE LINE.

AP RACING TECHNICAL SECTION WILL BE PLEASSED TO ADVISE ON THE MOST SUITABLE EQUIPMENT FOR ANY PARTICULAR APPLICATION.

CALIPER PART NUMBERS
CP6665-2S4L - RIGHT HAND TRAILING (BEHIND AXLE)
CP6665-3S4L - LEFT HAND TRAILING (BEHIND AXLE)

REPLACEMENT SEAL KIT
SEAL KIT (HIGH TEMPERATURE) CP4518-CEJ



Issue No.	Alterations			#	Zone	Initials
	Date & No.	Particulars				
1	21/05/09 B5591	FIRST ISSUE				DRA
2	25/06/09 B5633	CALIPER UPDATED TO SUIT IRON DISC & PAD RATHER THAN CARBON SET UP				SAT
3	24/08/15 B7372	TRAILING VERSION BLEED SCREW NOTE ADDED				DW

SCALE 1:1	SHEET 1 OF 2
DRAWN D.ARROWSMITH	
APPROVED	
DERIVED FROM	
TITLE FRONT RADI-CAL CALIPER	
DRG NO.	CP6665-1CD

B1 INSTALLATION DRAWING

IF THIS DOCUMENT IS PRINTED IN HARDCOPY, IT IS FOR INFORMATION USE ONLY AND THEREFORE IS NOT SUBJECT TO UPDATING CONTROLS. ALWAYS REFER TO SOLIDWORKS VIEWER FOR LATEST ISSUE

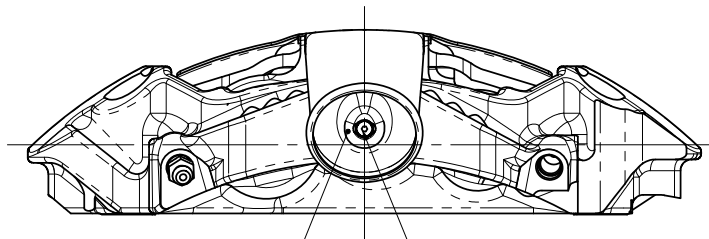
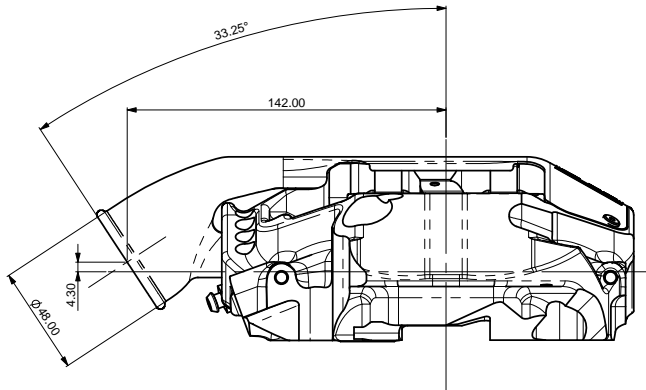


FIRST ANGLE PROJECTION

THIS DRAWING IS CONFIDENTIAL AND IS SUPPLIED ON THE EXPRESS CONDITION THAT IT SHALL NOT BE LOANED OR COPIED OR DISCLOSED TO ANY OTHER PERSON OR USED FOR ANY OTHER PURPOSE WITHOUT THE WRITTEN CONSENT OF AP RACING LTD.

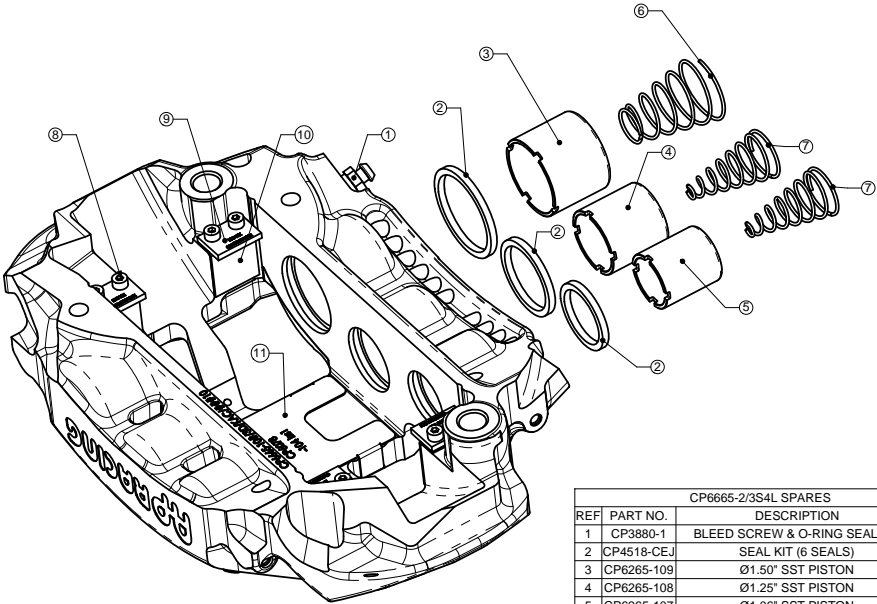


AP Racing
Wheler Road
Coventry
CV3 4LB
Tel: +44 024 7663 9595
Fax: +44 024 7663 9559
e-mail: sales@apracing.co.uk
Web site: HTTP://www.apracing.com
© AP Racing Ltd. 2005

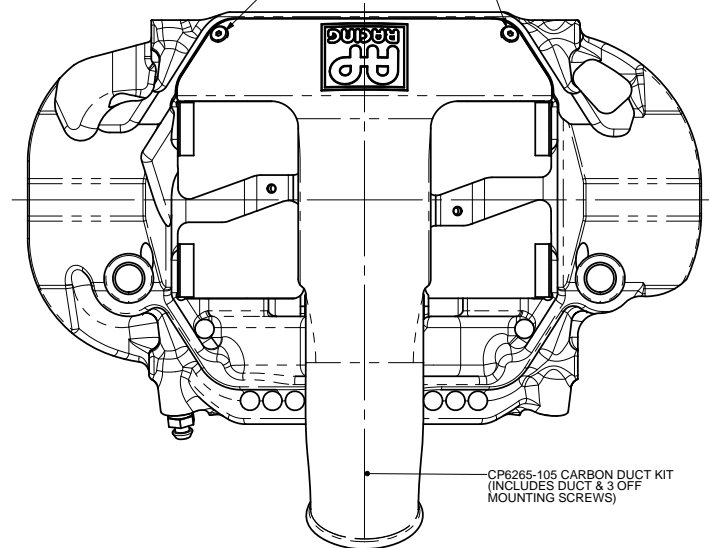


RECESS IN DUCT CAN BE COVERED WITH DUCT TAPE OR SIMILAR ONCE THE SCREW HAS BEEN FITTED TO CREATE A SMOOTH SURFACE TO FACILITATE AIR FLOW

3 OFF M4x6.00 LOW PROFILE SCREWS TO RETAIN CARBON DUCT



CP6665-2/3S4L SPARES				
REF	PART NO.	DESCRIPTION	QTY	
1	CP3880-1	BLEED SCREW & O-RING SEAL KIT	1	
2	CP4518-CEJ	SEAL KIT (6 SEALS)	1	
3	CP6265-109	Ø1.50" SST PISTON	2	
4	CP6265-108	Ø1.25" SST PISTON	2	
5	CP6265-107	Ø1.06" SST PISTON	2	
6	CP2667-105	4Lb AKB SPRING	2	
7	CP2632-113	4Lb AKB SPRING	4	
8	CP3215-115	M4 SOCKET HEAD CAP SCREW	8	
9	CP6230-110	PAD SUPPORT	4	
10	CP5760-105	ABUTMENT WEARPLATE	4	
11	CP6078-106	PAD RETAINER WEARPLATE	1	



CP6265-105 CARBON DUCT KIT (INCLUDES DUCT & 3 OFF MOUNTING SCREWS)

Issue No.	Alterations			Zone	Initials
	Date & No.	Particulars			

SCALE 1:1	SHEET 2 OF 2
DRAWN	D.ARROWSMITH
APPROVED	
DERIVED FROM	
TITLE	
FRONT RADI-CAL	
CALIPER	
DRG NO.	CP6665-1CD