

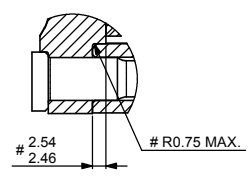
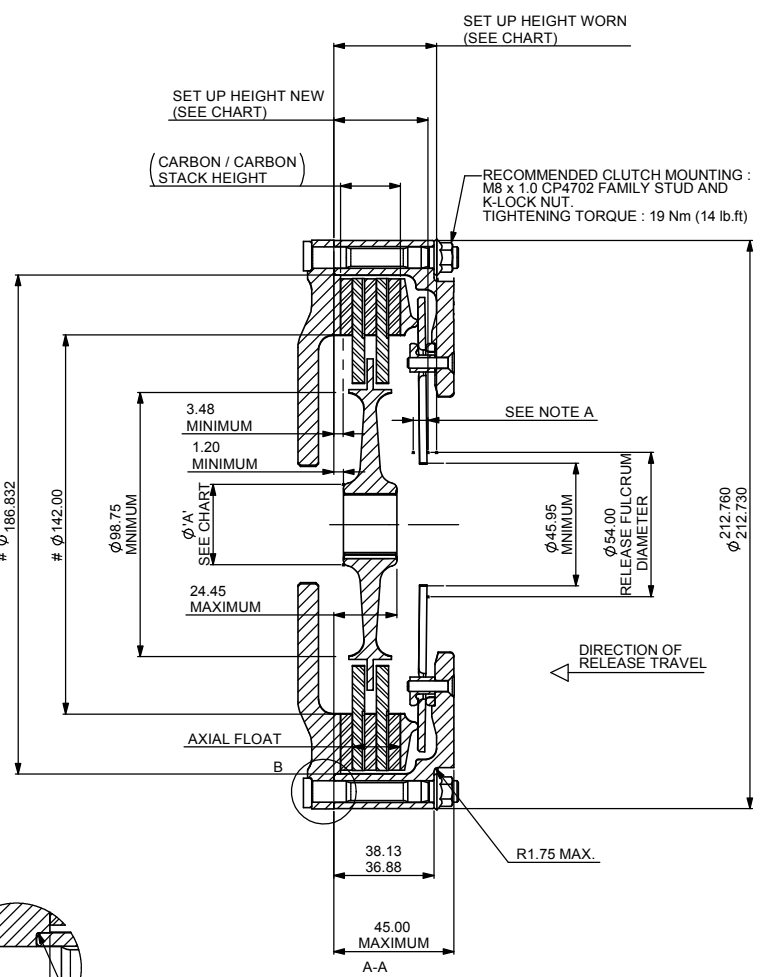
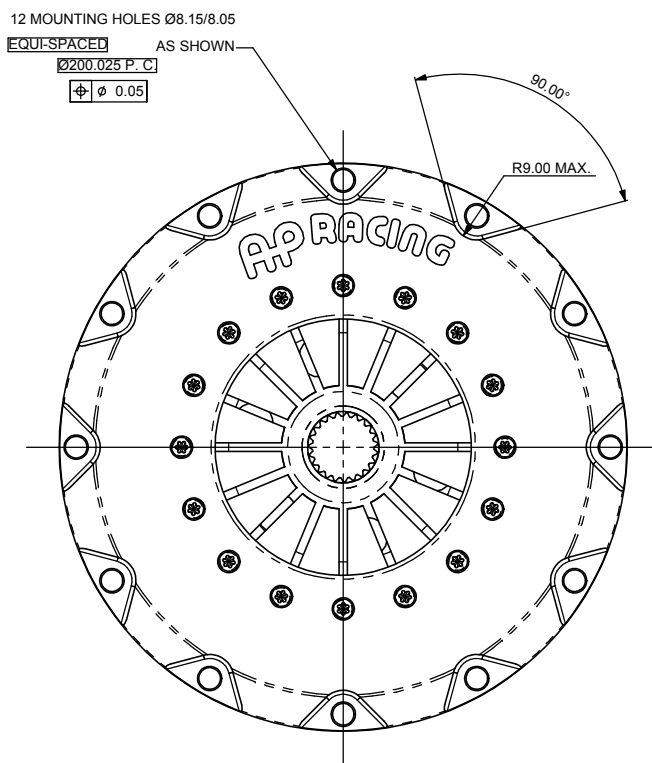
A1 INSTALLATION DRAWING

IF THIS DOCUMENT IS PRINTED IN HARDCOPY IT IS FOR INFORMATION USE ONLY AND THEREFORE IS NOT SUBJECT TO UPDATING CONTROLS. ALWAYS REFER TO SOLIDWORKS VIEWER FOR LATEST ISSUE

FIRST ANGLE PROJECTION

THIS DRAWING IS CONFIDENTIAL AND IS SUPPLIED ON THE EXPRESS CONDITION THAT IT SHALL NOT BE LOANED OR COPIED OR DISCLOSED TO ANY OTHER PERSON OR USED FOR ANY OTHER PURPOSE WITHOUT THE WRITTEN CONSENT OF AP RACING LTD.

AP RACING
 © AP Racing Ltd. 2001
 AP Racing
 Whelton Road
 Coventry
 CV3 4LB
 Tel: +44 024 7663 9595 e-mail: sales@apracings.co.uk
 Fax: +44 024 7663 9559 Web site: HTTP://www.apracings.com



DETAIL B
 SCALE 2 : 1

NOTE A :
 RELEASE TRAVEL TO BE LIMITED TO 5.50mm MAXIMUM.

CLUTCH PART No. SUFFIX	CP7202-OE01-SN	CP7202-OE01-SN	CP7202-TE01-SN
MAXIMUM DYNAMIC TORQUE CAPACITY Nm (lb/ft)	868 (640)	573 (423)	1042 (768)
MAXIMUM WEAR IN #	0.50	0.50	0.50
RELEASE LOAD (MAX PEAK WORN) daN	375	275	470
RELEASE LOAD (AT TRAVEL) daN	250	175	340
SET UP HEIGHT NEW	36.60	36.40	37.02
	34.55	34.35	34.96
SET UP HEIGHT WORN	39.75	39.55	39.16

HUB DETAILS		
HUB PART No.	SPLINE DETAIL	Ø'A' MAX
CP4202-122S	1.00" x 23	30.25
CP4202-127S	0.875" x 20	27.25
CP4202-128S	29.0 x 10	33.75
CP4202-143S	1.16" x 26	34.00

HUBS ARE AVAILABLE WITH OTHER SPLINE SIZES.

ASSEMBLY MASS AND INERTIA		
ASSEMBLY MASS (kg)	ASSEMBLY INERTIA (kgm²)	DRIVEN PLATES & HUB INERTIA (kgm²)
2.91	0.01656	0.002612

BASED ON ASSEMBLY CP7202-CE01-SN (HIGHEST MASS AND INERTIA IN THIS FAMILY), WITH A STEEL HUB. OTHER VALUES AVAILABLE UPON REQUEST.

THIS CLUTCH HAS BEEN DESIGNED FOR THE WEAR IN INDICATED, WHICH MUST BE COMPENSATED FOR BY USING PRESSURE PLATES FROM EITHER OF THE KITS DETAILED BELOW. MAXIMUM CARBON STACK WEAR IS 4.00mm
AXIAL HUB FLOAT MUST BE MAINTAINED

PRESSURE PLATE KIT (STEEL)			
STANDARD	CP3653-3	CP3653-3	CP3653-3
0.5 - 3.50, 0.50 STEPS			
INTERMEDIATE	CP3653-4	CP3653-4	CP3653-4
0.25 - 3.25, 0.50 STEPS			

Issue No	Alterations			Zone	Initials
	Date & No.	Particulars			
1	24/09/01 C1903	FIRST ISSUE		#	JG
2	10/03/03	REF. CE01-SN: 868 (640) WAS 866 (640) PRESSURE PLATE KIT: 0.50 - 3.50 WAS 0.50 - 2.50 0.25 - 3.25 WAS 0.25 - 2.25		#	JG
3	04/10/04	WEIGHT AND INERTIA ADDED.		#	JG
4	06/10/06 C2989	CP7202-TE01-SN ADDED.		#	JG
5	29/04/09	HUBS: CP4202-122S WAS CP3652-112S CP4202-127S WAS CP3652-114S CP4202-128S WAS CP3652-113S CP4202-143S WAS CP3652-115S		#	JG

SCALE 1:1 SHEET 1 OF 1

DRAWN	Jeremy Govan
APPROVED	
DERIVED FROM	
TITLE	
Ø184mm (7.25") CARBON / CARBON 2 PLATE CLUTCH INSTALLATION	
DRG NO.	cp7202cd

- FLYWHEEL DIMENSIONS.
 ALTERNATIVE CLUTCH MOUNTING:
 CAP HEAD BOLT (C'BORED TREAD)
 TIGHTENING TORQUE 22.0 Nm (16 lb ft)