

A1 INSTALLATION DRAWING

IF THIS DOCUMENT IS PRINTED IN HARDCOPY, IT IS FOR INFORMATION USE ONLY AND THEREFORE IS NOT SUBJECT TO UPDATING CONTROLS. ALWAYS REFER TO SOLIDWORKS VIEWER FOR LATEST ISSUE



THIS DRAWING IS CONFIDENTIAL AND IS SUPPLIED ON THE EXPRESS CONDITION THAT IT SHALL NOT BE LOANED OR COPIED OR DISCLOSED TO ANY OTHER PERSON OR USED FOR ANY OTHER PURPOSE WITHOUT THE WRITTEN CONSENT OF AP RACING LTD.



AP Racing
Wheler Road
Coventry
CV3 4LB

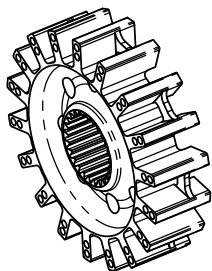
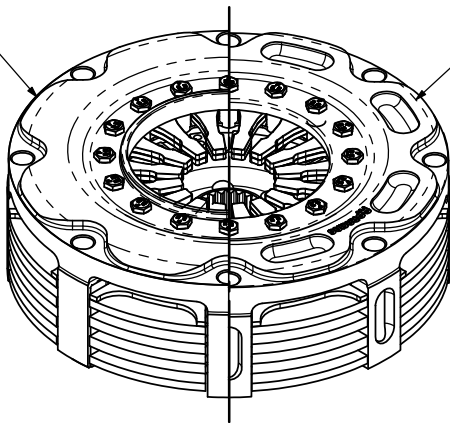
Tel: +44 (0) 24 7663 9595
Fax: +44 (0) 24 7663 9559
e-mail: engineering@apracings.com
Web site: http://www.apracings.com

© AP Racing Ltd. 2016

CP7543 Ø140mm (5.5") CARBON / CARBON CLUTCH ASSEMBLY

SECTION SHOWING AN ALUMINIUM COVER

SECTION SHOWING A STEEL COVER



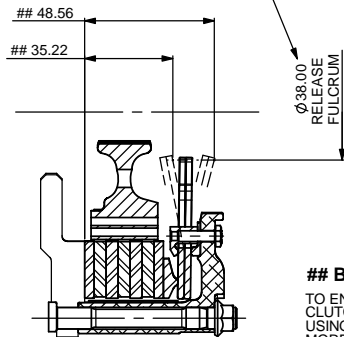
TYPICAL HUB WEIGHT = 0.427 Kg

HUB PART No.	SPLINE
CP5143-102S	1.00" x 23
CP5143-103S	0.875" x 20
CP5143-104S	1.16" x 26

HUBS ARE AVAILABLE WITH OTHER SPLINE SIZES. CONTACT AP RACING FOR DETAILS.

FOR HUB ENVELOPE SEE SHEET 2.

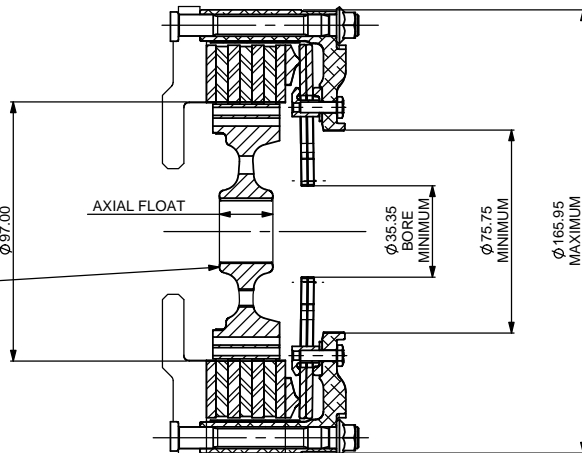
SEE CP3457 RELEASE BEARING RANGE



BEARING POSITION

TO ENSURE ADEQUATE RELEASE TRAVEL AND CLUTCH LIFE THESE LIMITS HAVE BEEN CALCULATED USING AN ADDITIONAL 20% RELEASE TRAVEL AND 50% MORE WEAR IN THAN SPECIFIED. (CALCULATED FROM THE FRICTION FACE.)

THESE FIGURES COVER THE FULL RANGE OF CLUTCHES IN THE CP7543 FAMILY.



FOR BE AND OE ASSEMBLIES		KIT NUMBER
LOW KIT	0.00 TO 3.00 0.25 INCREMENTS	CP6063-12SS
HIGHT KIT	3.25 TO 5.25 0.25 INCREMENTS	CP6063-13SS
FOR OH AND GH ASSEMBLIES		
STANDARD HALF KIT	0.50 TO 2.50 0.50 INCREMENTS	CP6963-13SS
INTERMEDIATE HALF KIT	0.25 TO 2.25 0.50 INCREMENTS	CP6963-12SS

CP7543 CLUTCH FAMILY

MAXIMUM DYNAMIC TORQUE CAPACITY				
(Nm)	952	1142	1256	1599
(ft.lb)	701	842	926	1179

RELEASE LOAD				
Max. Peak Worn (N)	4350	7500	8500	7500
Max. Peak New (N)	3850	6000	6850	6000

WEAR IN (See Note)				
	0.75	1.25	1.25	0.75

Set Up Height New				
	39.78	41.56	41.96	42.03
Set Up Height Worn (Max.)				
	43.27	45.86	45.68	45.27

(Set Up Height is calculated from the flywheel friction face.)

Release Ratio				
	4.58	2.94	2.94	4.20

Aluminium Cover (Steel Pressure Plate and Hub)		Steel Cover (Steel Pressure Plate and Hub)		
Assembly Mass	2.26 kg	3.04 kg		
Assembly Inertia	0.007684 kg.m ²	0.011473 kg.m ²		
Estimated Driven Plate and Hub Inertia (Steel hub)= 0.00095 Kgm ²				

PERFORMANCE SUFFIX	BS SINGLE SPRING	OH TWIN SPRING	GH TWIN SPRING	OE TWIN SPRING
--------------------	------------------	----------------	----------------	----------------

For Reference				
Diaphragm Spring Rate	BUF	ORA	GRY	ORA
Clutch Ratio	SHR	HIR	HIR	EHR

MATERIAL SUFFIX	COVER MATERIAL	PRESSURE PLATE MATERIAL	CARBON / CARBON TYPE
01	ALUMINIUM	STEEL	STANDARD DUTY
02	ALUMINIUM	STEEL	HEAVY DUTY
03	STEEL	STEEL	HEAVY DUTY
08	ALUMINIUM	TITANIUM	HEAVY DUTY

FLYWHEEL TYPE

	SUFFIX	COMMENTS
STANDARD FLAT FLYWHEEL	FN	FOR INSTALLATION DATA SEE SHEET 2
STANDARD STEPPED FLYWHEEL	SN	FOR INSTALLATION DATA SEE SHEET 2
FLAT FLYWHEEL WITH CFS	FC	N/A
STEPPED FLYWHEEL WITH CFS	SC	N/A

Sample AP Racing Part No. **CP7543-OH02-SN**

WEAR IN

THIS CLUTCH HAS BEEN DESIGNED FOR THE WEAR IN INDICATED ABOVE, WHICH MUST BE COMPENSATED FOR BY USING PRESSURE PLATE "SHIMS" FROM THE KITS DETAILED BELOW. THE MAXIMUM CARBON STACK WEAR FOR THIS ASSEMBLY IS 6.00mm

	BS	OE	GH & OH
	0.50 - 5.00mm	0.50 - 5.00 mm	0.50 - 4.50 mm
STANDARD KIT IN 0.50 STEPS	CP7543-25SS (STAINLESS STEEL)	CP7543-2 (TITANIUM) CP7543-2SS (STAINLESS STEEL)	CP6963-5SS (STAINLESS STEEL)
	0.25 - 5.25mm	0.25 - 5.25 mm	0.25 - 4.75 mm
INTERMEDIATE KIT IN 0.50 STEPS	CP7543-26SS (STAINLESS STEEL)	CP7543-3 (TITANIUM) CP7543-3SS (STAINLESS STEEL)	CP6963-6SS (STAINLESS STEEL)

ISSUE No.	Alterations			Zone	Initials
	Date & No.	Particulars			
3	02/09/03 C2297	FIRST ISSUE IN NEW FORMAT OE OPTION ADDED.			JG
4	05/09/03	35.22 was 30.72 40.58 was 43.08 45.34 was 47.84 40.40 was 42.90 44.63 was 47.13			D1 JG
5	29/09/03	'OE' RATIO WAS 2.93 'OH' RATIO WAS 4.13 SUH LIMITS ADDED. MAX ADDED TO SUH WORN. 45.42 WAS 45.34 44.63 WAS 44.63			JG
6	21/01/04	OE SPEC. WEAR IN WAS 1.00mm			#
7	19/04/04 C2433	PP KITS CP7543-2SS & CP7543-3SS ADDED OH KIT 0.5-4.5 WAS 0.5-5.0 CE KIT 0.25-2.25 WAS 0.25-4.75			A13 B.P
8	19/10/04 C2551	COVER MOUNTING DETAIL CLARIFIED.			JG
9	01/06/05 C2691	03 MATERIAL DESIGNATION ADDED.			RDG
10	04/10/05 C2763	BE SPECIFICATION ADDED. UNUSED OPTIONS DELETED.			JG
11	24/10/05 C2763	BH SPECIFICATION ADDED. (THIS REF. WAS CP6963-BH ON DRAWING CP6963-2CD)			JG
12	02/11/05 C2771	GH SPECIFICATION ADDED			JG
13	09/11/05 RAC21284	TORQUE CAPACITY : OE - 1599 WAS 1458 BE - 952 WAS 900 OH - 1142 WAS 1042 GH - 1333 WAS 1250			JG
14	10/10/06 C2979	STEEL COVER WEIGHT AND INERTIA ADDED. STEEL SECTION VIEW ADDED			JG
15	12/01/09 C3564	BE AND OE ADDITIONAL PRESSURE PLATE KITS ADDED.			JG
16	22/10/13 C4592	BE & BH SPEC'S DELETED. OH - RELEASE LOADS: 7500/6000 WAS 8150/5000 SUH, 41.56/39.87 & 47.82 WAS 40.90/39.91 & 44.63 GH - RELEASE LOADS: 8500/6850 WAS 8875/6800 SUH, 41.96/40.27 & 48.22 WAS 41.36/40.43 & 45.08. TORQUE 1256Nm WAS 1333Nm OH - RELEASE LOADS: 7500/6000 WAS 8150/5000, SUH, 42.06/39.37 & 47.81 WAS 41.15/40.03 & 45.42.			### ???
17	24/10/13 C4595	'BS' SPECIFICATION ADDED			JG
18	12/11/13 C4612	OH AND GH ASSEMBLIES, HALF KIT DETAILS ADDED. SUH WORN FIGURES CORRECTED. 'SS' ADDED TO STAINLESS STEEL PRESSURE PLATE KITS.			JG
19	09/05/18 RAC22276	PRESSURE PLATE KIT PART NUMBERS CORRECTED CP7543-26SS WAS CP7543-16SS CP7543-25SS WAS CP7543-15SS			B11 PCB

SCALE 1:1	SHEET 1 OF 2
DRAWN	JEREMY GOVAN
APPROVED	
DERIVED FROM	CP7543CD ISSUE 2
TITLE	
Ø140 CARBON/CARBON PUSH TYPE 8 BOLT 3 PLATE CLUTCH	
DRG NO.	CP7543CD

A1 INSTALLATION DRAWING

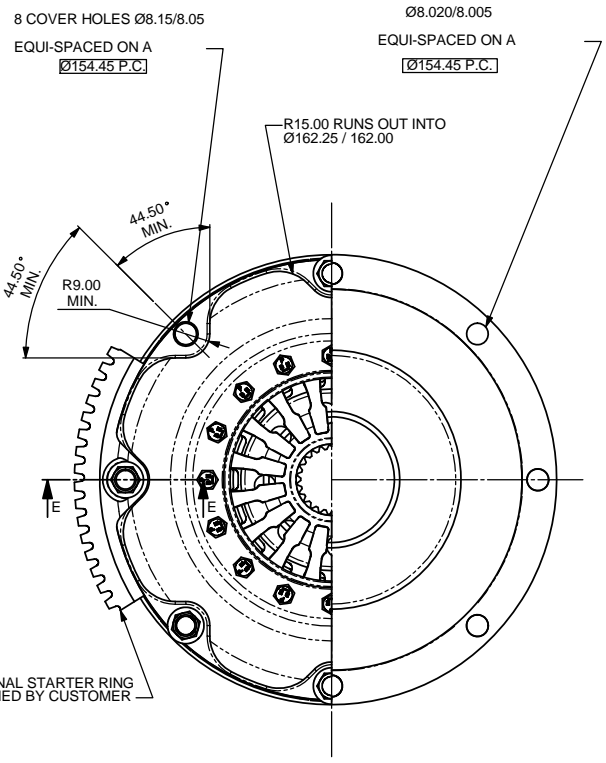
IF THIS DOCUMENT IS PRINTED IN HARDCOPY, IT IS FOR INFORMATION USE ONLY AND THEREFORE IS NOT SUBJECT TO UPDATING CONTROLS. ALWAYS REFER TO SOLIDWORKS VIEWER FOR LATEST ISSUE



THIS DRAWING IS CONFIDENTIAL AND IS SUPPLIED ON THE EXPRESS CONDITION THAT IT SHALL NOT BE LOANED OR COPIED OR DISCLOSED TO ANY OTHER PERSON OR USED FOR ANY OTHER PURPOSE WITHOUT THE WRITTEN CONSENT OF AP RACING LTD.

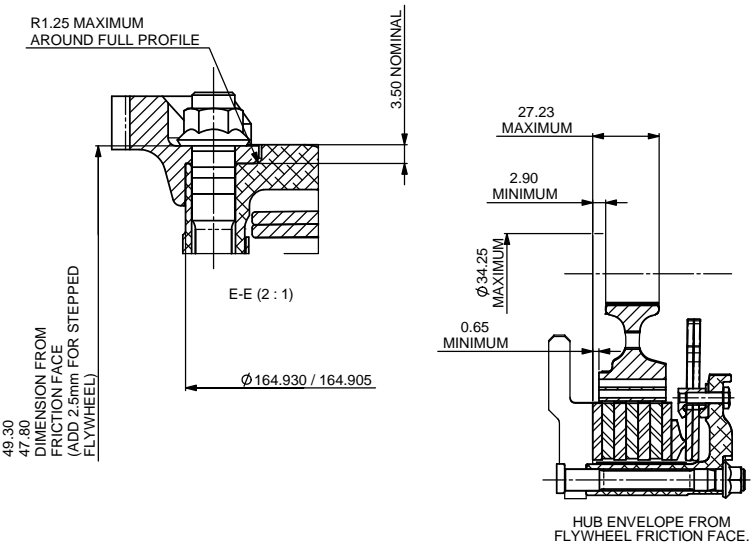
AP Racing Ltd. 2016
 Tel: +44 (0) 24 7663 9595
 Fax: +44 (0) 24 7663 9559
 e-mail: engineering@apracings.co.uk
 Web site: <http://www.apracings.com>

(RECOMMENDED FOR CP4702 STUDS)
 # 8 STUD MOUNTING HOLES
 Ø8.020/8.005
 EQUI-SPACED ON A
 Ø154.45 P.C.



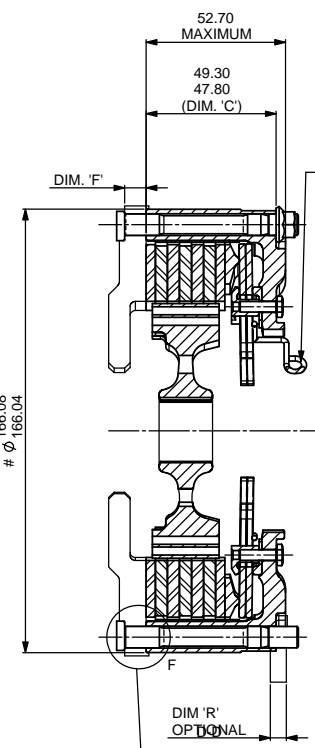
OPTIONAL STARTER RING SUPPLIED BY CUSTOMER

R1.25 MAXIMUM AROUND FULL PROFILE



FLYWHEEL DIMENSIONS

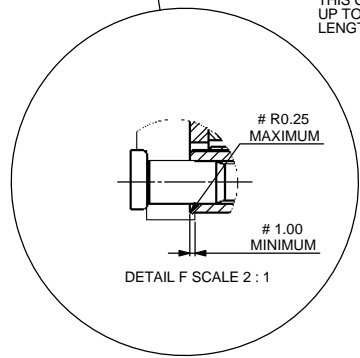
FLAT FLYWHEEL - SUFFIX FN AND FC



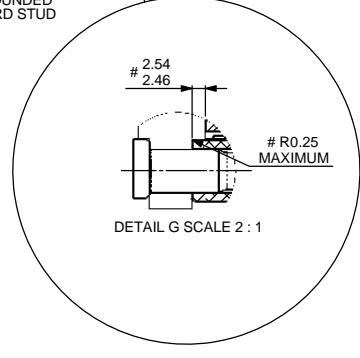
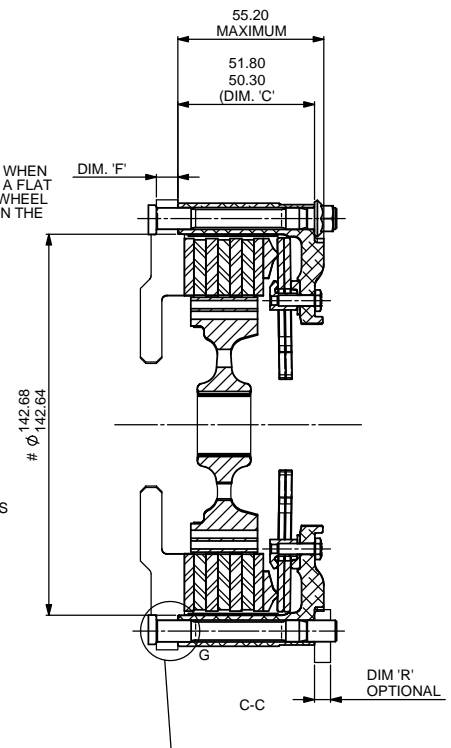
INSTALLATION WIRE FOR USE WHEN INSTALLING THE CLUTCH TO A FLAT FLYWHEEL. TO ENSURE FLYWHEEL SIDE CARBON IS LOCATED ON THE COVER LUGS

THIS WIRE MUST BE REMOVED BEFORE USE

FLYWHEEL DIMENSIONS



STEPPED FLYWHEEL SUFFIX SN AND SC



RECOMMENDED CLUTCH MOUNTING : (FOR ALL TYPES OF ASSEMBLY)
 M8 x 1.0, CP4702 FAMILY STUD AND K-LOCK NUT.
 TIGHTENING TORQUE : 19Nm (14 ft.lb)

LENGTH OF STUD REQUIRED TO BE CALCULATED THUS :
 STUD LENGTH = DIMENSIONS 'C' + 'F' + ('R' OPTIONAL) + NUT
 THIS CALCULATED LENGTH TO BE ROUNDED UP TO THE NEXT AVAILABLE STANDARD STUD LENGTH.

Issue No.	Alterations		Zone	Initials
	Date & No.	Particulars		
3	02/09/03 C2297	FIRST ISSUE IN NEW FORMAT OE OPTION ADDED.		JG
4	05/09/03	35.22 was 30.72 40.58 was 43.08 45.34 was 47.84 40.40 was 42.90 44.63 was 47.13	D1	JG
5	29/09/03	'OE' RATIO WAS 2.93 OH RATIO WAS 4.13 SUH LIMITS ADDED. MAX ADDED TO SUH WORN. 45.42 WAS 45.34 44.69 WAS 44.63		JG
6	21/01/04	OE SPEC. WEAR IN WAS 1.00mm		#
7	19/04/04 C2433	PP KITS CP7543-2SS & CP7543-3SS ADDED CH KIT 0.5-4.5 WAS 0.5-5.0 CE KIT 0.25-5.25 WAS 0.25-4.75	A13	B,JP
8	19/10/04 C2551	COVER MOUNTING DETAIL CLARIFIED.		JG
9	01/06/05 C2691	03 MATERIAL DESIGNATION ADDED.		RDB
10	04/10/05 C2763	BE SPECIFICATION ADDED. UNUSED OPTIONS DELETED.		JG
11	24/10/05 C2763	BH SPECIFICATION ADDED. (THIS REF. WAS CP6963-BH ON DRAWING CP6963-2CD)		JG
12	02/11/05 C2771	GH SPECIFICATION ADDED		JG
13	09/11/05 RAC21284	TORQUE CAPACITY : OE - 1599 WAS 1458 BE - 952 WAS 900 OH - 1142 WAS 1042 GH - 1333 WAS 1250		JG
14	10/10/06 C2979	STEEL COVER WEIGHT AND INERTIA ADDED. STEEL SECTION VIEW ADDED		JG
15	12/01/09 C3564	BE AND OE ADDITIONAL PRESSURE PLATE KITS ADDED.		JG
16	22/10/13 C4592	SEE SHEET 1		JG
17	24/10/13 C4595	'BS' SPECIFICATION ADDED		JG
18	12/11/13 C4612	OH AND GH ASSEMBLIES, HALF KIT DETAILS ADDED. SUH WORN FIGURES CORRECTED. 'SS' ADDED TO STAINLESS STEEL PRESSURE PLATE KITS.		JG
19	09/05/18 RAC22276	PRESSURE PLATE KIT PART NUMBERS CORRECTED CP7543-26SS WAS CP7543-16SS CP7543-25SS WAS CP7543-15SS	B11	pcb

SCALE 1:1 SHEET 2 OF 2

DRAWN JEREMY GOVAN

APPROVED

DERIVED FROM CP7543CD ISSUE 2

TITLE
 Ø140 CARBON/CARBON PUSH
 TYPE 8 BOLT 3 PLATE CLUTCH

DRG NO. CP7543CD