

# B1 INSTALLATION DRAWING

IF THIS DOCUMENT IS PRINTED IN HARDCOPY, IT IS FOR INFORMATION USE ONLY AND THEREFORE IS NOT SUBJECT TO UPDATING CONTROLS. ALWAYS REFER TO SOLIDWORKS VIEWER FOR LATEST ISSUE



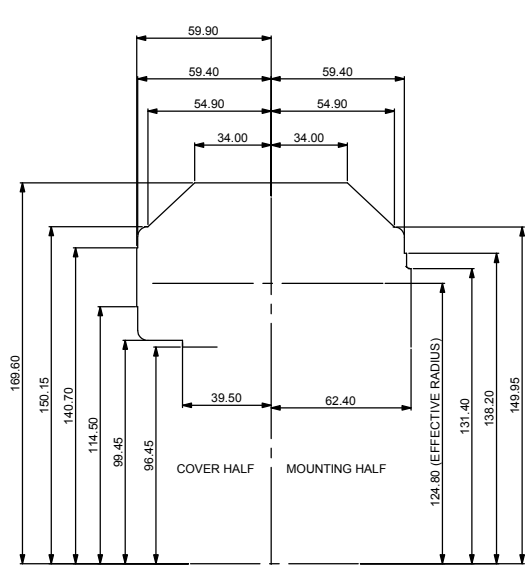
THIS DRAWING IS CONFIDENTIAL AND IS SUPPLIED ON THE EXPRESS CONDITION THAT IT SHALL NOT BE LOANED OR COPIED OR DISCLOSED TO ANY OTHER PERSON OR USED FOR ANY OTHER PURPOSE WITHOUT THE WRITTEN CONSENT OF AP RACING LTD.



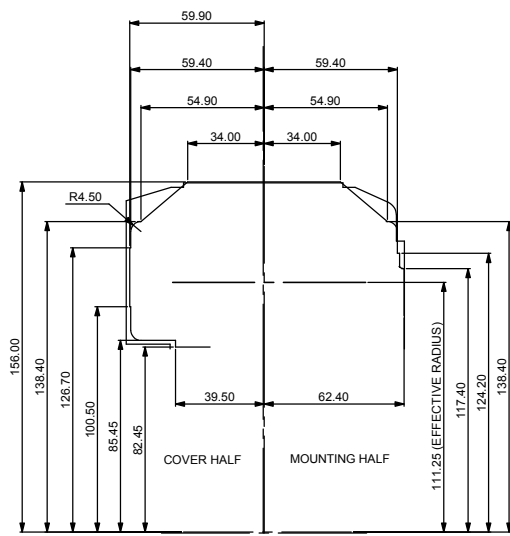
© AP Racing Ltd. 2004

AP Racing  
Wheler Road  
Coventry  
CV3 4LB

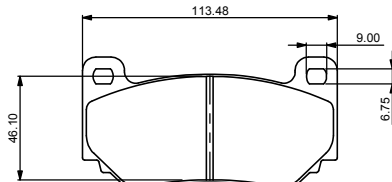
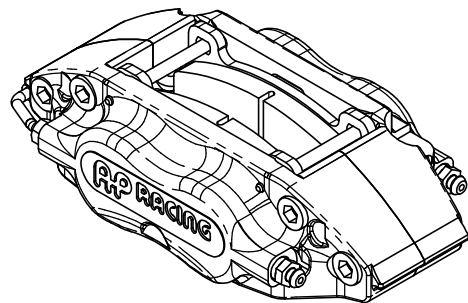
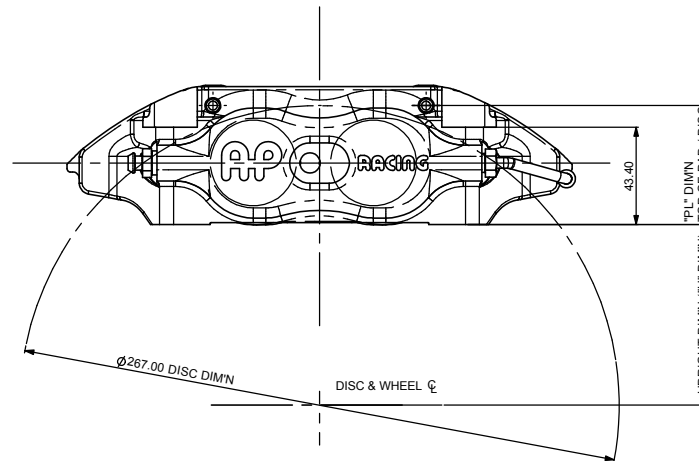
Tel: +44 024 7663 9595 e-mail: sales@apracing.co.uk  
Fax: +44 024 7663 9599 Web site: HTTP://www.apracing.com



**CALIPER RADIAL PROFILE AS FITTED ON A Ø295.00 DISC**

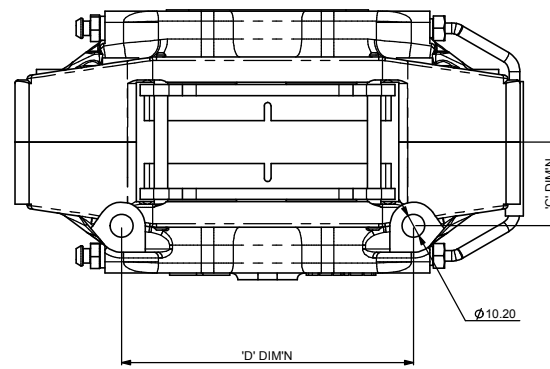


**CALIPER RADIAL PROFILE AS FITTED ON A Ø267.00 DISC**



**CP7600 PAD FAMILY**

PAD AREA (MAX) 44.90cm<sup>2</sup>



CALIPER SPECIFICATION	
BORE SIZE	31.75 X 31.75 (1.25" X 1.25")
PISTON AREA / PAD	15.83 SQ. CM
MAX DISC DIA.	295.00
DISC THICKNESS	18.00
DISC THICKNESS MIN (WORN CONDITION)	16.00 (DIFFERENTIAL WEAR NOT TO EXCEED 0.50MM SIDE TO SIDE)
WORKING PRESSURE MAX.	80 bar
HYDRAULIC FEED	M10 X 1.0
DRY WEIGHT (LESS PADS)	1.8 kg
PAD FAMILY	CP7600
*P* DIMN	53.00
*O* DIMN	37.25
*M* DIMN	130.00
PAD FRICTION MATERIAL MIN. THICKNESS	2.50
PAD RETENTION	2 X FRICTION RETAINED PINS
TIGHTENING TORQUES	BLEED SCREW - 17Nm HYDRAULIC FEED - 25Nm
CORROSION PROTECTION	UNPAINTED - ALUMINIUM BODY PAINTED - FLUID RESISTANT PAINT FINISH

CALIPER IDENTIFICATION CHART	
RH	RIGHT HAND TRAILING (BEHIND AXLE)
LH	LEFT HAND TRAILING (BEHIND AXLE)
RHL	RIGHT HAND LEADING (IN FRONT OF AXLE)
LHL	LEFT HAND LEADING (IN FRONT OF AXLE)

PART NUMBER	DESCRIPTION
CP7613-350	RH - SIDE FEED - NO ANTI KNOCK BACK SPRING
CP7613-350	LH - SIDE FEED - NO ANTI KNOCK BACK SPRING
CP7613-450	RHL - SIDE FEED - NO ANTI KNOCK BACK SPRING
CP7613-550	LHL - SIDE FEED - NO ANTI KNOCK BACK SPRING

PART NUMBER	DESCRIPTION
CP7613-1250	RH - SIDE FEED - NO ANTI KNOCK BACK SPRING - PAINTED
CP7613-1350	LH - SIDE FEED - NO ANTI KNOCK BACK SPRING - PAINTED
CP7613-1450	RHL - SIDE FEED - NO ANTI KNOCK BACK SPRING - PAINTED
CP7613-1550	LHL - SIDE FEED - NO ANTI KNOCK BACK SPRING - PAINTED

**PART NUMBERING CONVENTION**

REV	Alterations			Zone	Initials
	Date & No.	Particulars	#		
1	21/11/02 R1122	FIRST ISSUE		GD	
2	11/03/04 B3873	Ø267 RADIAL PROFILE MODIFIED TO REFLECT COMPONENT MOKS, Ø295 RADIAL PROFILE ADDED, 43.40 ADDED	L17	GD	JH
3	21/06/07 R2351	CP7613-12/13/14/15 ADDED TO TABLE PAINT PROTECTION ADDED.	3B	GD	

SCALE 1:1	SHEET 1 OF 1
DRAWN	GREG DOLMAN
APPROVED	
DERIVED FROM	CP7600-1CD
TITLE <b>CALIPER INSTALLATION DRAWING</b> Ø267 x 18 DISC	
DWG NO.	cp7613-1cd