

# B1 INSTALLATION DRAWING

IF THIS DOCUMENT IS PRINTED IN HARD COPY, IT IS FOR INFORMATION USE ONLY AND THEREFORE IS NOT SUBJECT TO UPDATING CONTROLS. ALWAYS REFER TO SOLIDWORKS VIEWER FOR LATEST ISSUE



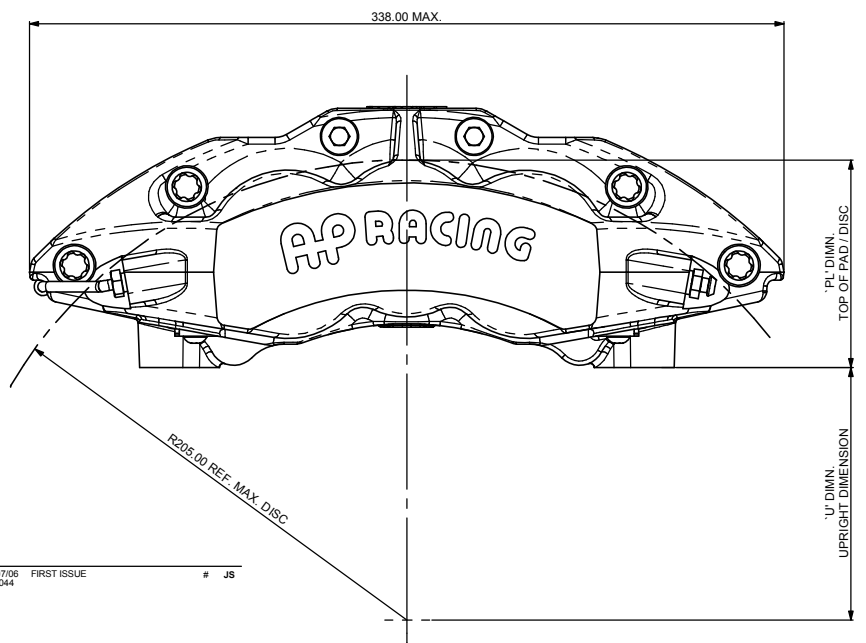
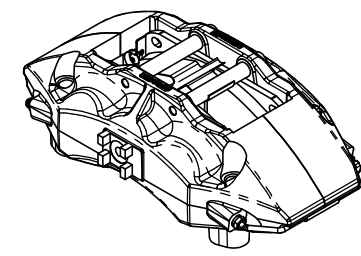
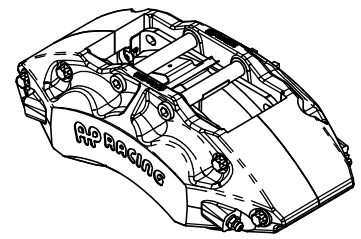
THIS DRAWING IS CONFIDENTIAL AND IS SUPPLIED ON THE EXPRESS CONDITION THAT IT SHALL NOT BE LOANED OR COPIED OR DISCLOSED TO ANY OTHER PERSON OR USED FOR ANY OTHER PURPOSE WITHOUT THE WRITTEN CONSENT OF AP RACING LTD.

AP Racing  
Wheler Road  
Coventry  
CV3 4LB  
Tel: +44 024 7683 9595  
Fax: +44 024 7683 9559  
e-mail: sales@apracings.co.uk  
Web site: HTTP://www.apracings.com

© AP Racing Ltd. 2005

## CALIPER SPECIFICATION

BORE SIZE	36.0 x 38.2 x 41.3 (1.42"x1.50"x1.63")
PISTON AREA / PAD	35.0 cm <sup>2</sup>
DISC DIA. MAX.	410.00
DISC THICKNESS MAX.	35.56
DISC THICKNESS MIN. (WORKING CONDITION)	34.00
WORKING PRESSURE MAX.	SEE DATA SHEET P14.148 (AVAILABLE FROM AP RACING TECHNICAL DEPT.)
HYDRAULIC FEED	M10 x 1.0
DRY WEIGHT (LESS PADS)	6.1 kg
PAD FAMILY	CP8310
EFFECTIVE RADIUS (ON DIA. 410.00 DISC)	171.00
'PL' DIM.	92.50
OFFSET 'C' DIM.	52.00
MTG. HOLE CENTRES 'D' DIM.	210.00
PAD FRICTION MATERIAL MIN. THICKNESS	2.50
PAD RETENTION	RETAINER TUBES + M10 BOLTS
TIGHTENING TORQUES	BLEED SCREW : 17Nm HYDRAULIC FEED : 25Nm RETAINING TUBE BOLTS : 35Nm
CORROSION PROTECTION	FLUID RESISTANT PAINT FINISH - ALUMINIUM BODY. BOOT TYPE DIRT SEALS.



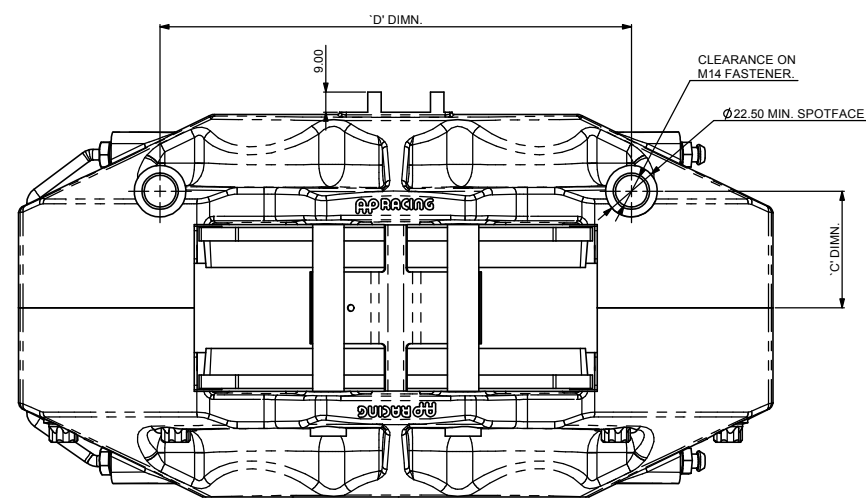
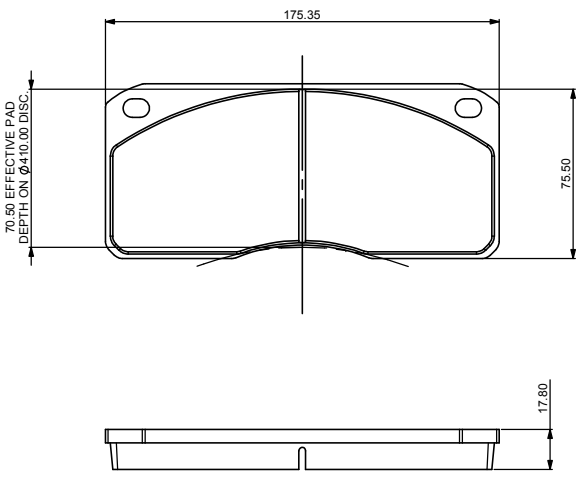
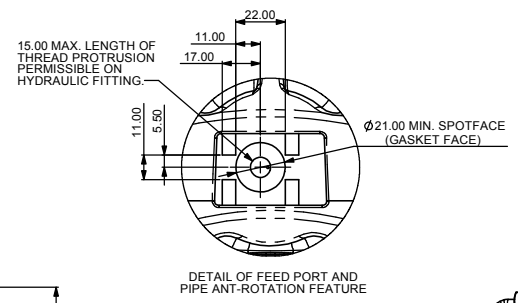
## CALIPER POSITIONING CHART

RHT	RIGHT HAND TRAILING (BEHIND AXLE)
LHT	LEFT HAND TRAILING (BEHIND AXLE)
RHL	RIGHT HAND LEADING (IN FRONT OF AXLE)
LHL	LEFT HAND LEADING (IN FRONT OF AXLE)

## PART NUMBERING CONVENTION

PART NUMBER	DESCRIPTION
CP8316-2SD	RHT - SIDE FEED - NO ANTI KNOCK BACK SPRING
CP8316-3SD	LHT - SIDE FEED - NO ANTI KNOCK BACK SPRING
CP8316-4SD	RHL - SIDE FEED - NO ANTI KNOCK BACK SPRING
CP8316-5SD	LHL - SIDE FEED - NO ANTI KNOCK BACK SPRING

1 05/07/06 R2044 FIRST ISSUE # JS



CP8310 PAD FAMILY  
PAD AREA (MAX.) - 109.1 cm<sup>2</sup>

### FOR INSTALLED PROFILES SEE SHEET 2

REV	DATE	Alterations		
		Date & No.	Particulars	Zone / Initials
1	05/07/06 R2044	FIRST ISSUE	# JS	
2	28/10/09 R2822	RETAINING TUBE BOLTS TORQUE VALUES ADDED	4L NS	

SCALE 1:1	SHEET 1 OF 2
DRAWN Jon Simmonds	
APPROVED	
DERIVED FROM	
TITLE HEAVY DUTY 6 PISTON CALIPER INSTALLATION DRAWING	
DRG NO. CP8316-1CD	

**B1** INSTALLATION DRAWING

IF THIS DOCUMENT IS PRINTED IN HARDCOPY, IT IS FOR INFORMATION USE ONLY AND THEREFORE IS NOT SUBJECT TO UPDATING CONTROLS. ALWAYS REFER TO SOLIDWORKS VIEWER FOR LATEST ISSUE

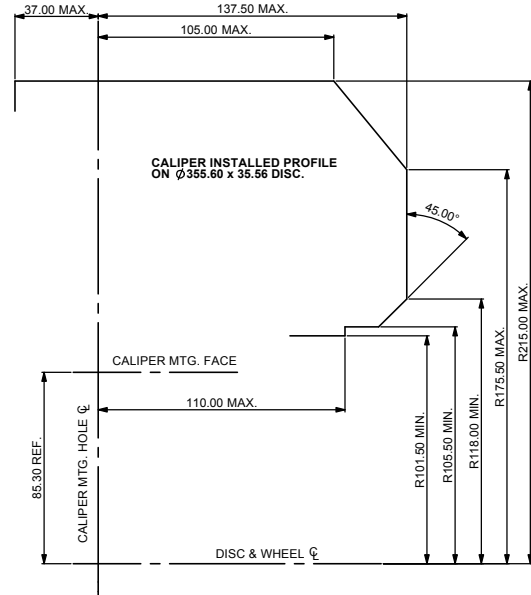
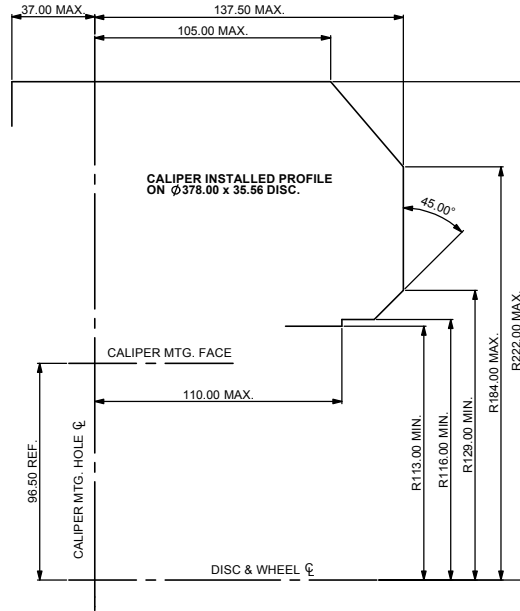
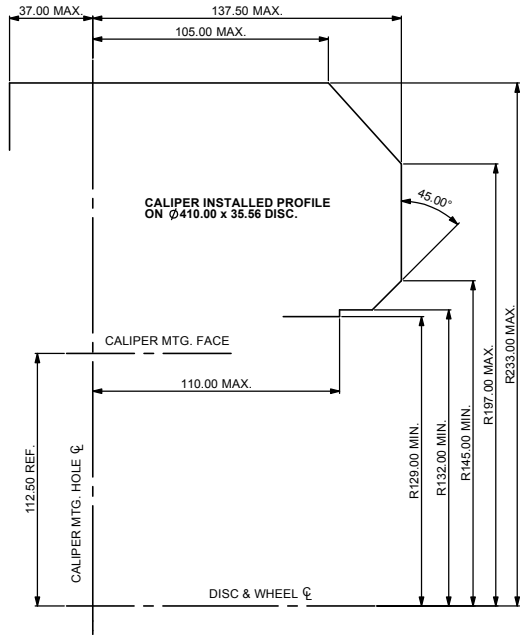


THIS DRAWING IS CONFIDENTIAL AND IS SUPPLIED ON THE EXPRESS CONDITION THAT IT SHALL NOT BE LOANED OR COPIED OR DISCLOSED TO ANY OTHER PERSON OR USED FOR ANY OTHER PURPOSE WITHOUT THE WRITTEN CONSENT OF AP RACING LTD.



AP Racing  
Wheler Road  
Coventry  
CV3 4LB  
Tel: +44 024 7663 9595  
Fax: +44 024 7663 9559  
e-mail: sales@apracings.co.uk  
Web site: HTTP://www.apracings.com

Last Saved: rntevens on 28 October 2009 14:30:30



Issue No	Alterations		Zone	Initials
	Date & No.	Particulars		

SCALE 1:1	SHEET 1 OF 2
DRAWN	Jon Simmonds
APPROVED	
DERIVED FROM	
TITLE	
HEAVY DUTY CALIPER INSTALLATION	
DRG NO.	CP8316-1CD