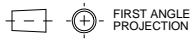


A0 INSTALLATION DRAWING

IF THIS DOCUMENT IS PRINTED IN HARD COPY, IT IS FOR INFORMATION USE ONLY AND THEREFORE IS NOT SUBJECT TO UPDATING CONTROLS. ALWAYS REFER TO SOLIDWORKS VIEWER FOR LATEST ISSUE



THIS DRAWING IS CONFIDENTIAL AND IS SUPPLIED ON THE EXPRESS CONDITION THAT IT SHALL NOT BE LOANED OR COPIED OR DISCLOSED TO ANY OTHER PERSON OR USED FOR ANY OTHER PURPOSE WITHOUT THE WRITTEN CONSENT OF AP RACING LTD.



AP Racing
 Wheeler Road
 Coventry
 CV3 4LB
 Tel: +44 (0)24 7663 9595
 Fax: +44 (0)24 7663 9559
 e-mail: sales@ap-racing.co.uk
 © AP Racing Ltd 2016 Website: HTTP://www.ap-racing.com

CALIPER SPECIFICATION

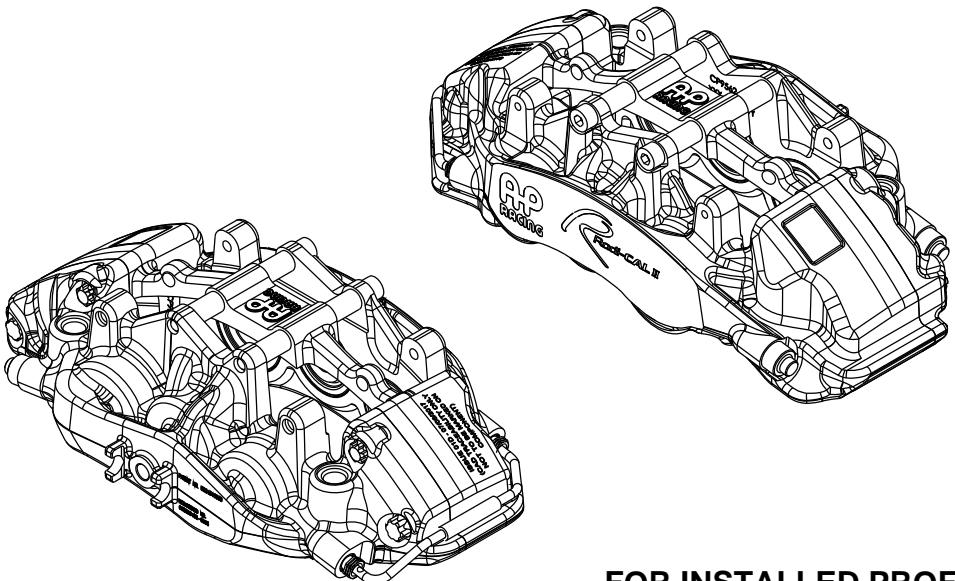
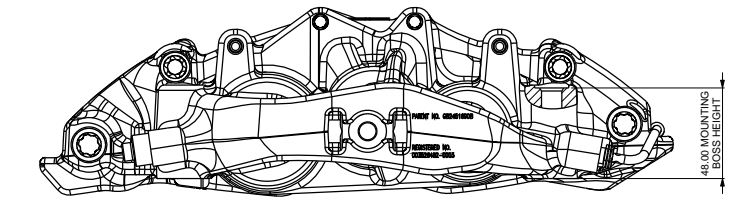
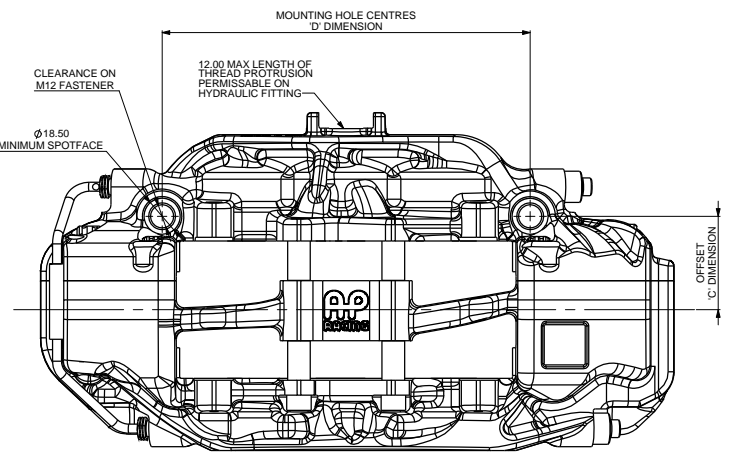
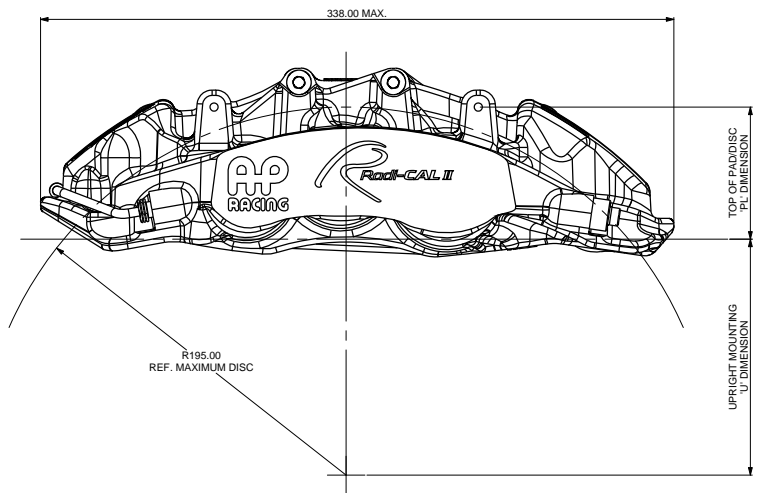
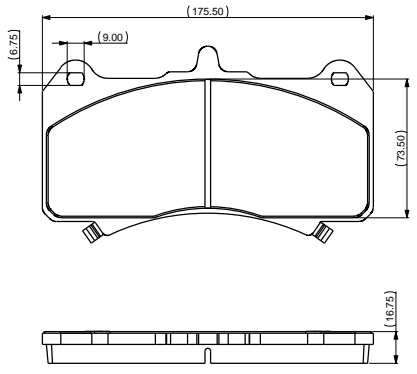
BORE SIZE	CEJ (27.00 x 31.80 x 38.10) (1.06" x 1.25" x 1.50")
PISTON AREA	25.0cm ²
DISC DIAMETER MAX	390.00
DISC THICKNESS MAX	36.00
DISC THICKNESS MIN (WORN CONDITION)	34.00 (DIFFERENTIAL WEAR NOT TO EXCEED 0.50mm SIDE TO SIDE)
WORKING PRESSURES	SEE DATA SHEET P14.352 (AVAILABLE FROM AP RACING TECHNICAL DEPT)
HYDRAULIC FEED	M10 x 1.0
DRY WEIGHT (LESS PADS)	4.27kg
PAD FAMILY	CP7555
EFFECTIVE RADIUS (ON DIAMETER 390.00 DISC)	158.50
PL' DIMENSION	70.00
OFFSET 'C' DIMENSION	49.50
MOUNTING HOLE CENTRES 'D' DIMENSION	195.00
PAD FRICTION MATERIAL MIN THICKNESS	2.50
PAD RETENTION	2 x FRICTION RETAINED PINS
TIGHTENING TORQUES	BLEED SCREW: 17Nm HYDRAULIC FEED: 25Nm RETAINER BOLTS: 19Nm
CORROSION PROTECTION	FLUID RESISTANT PAINT FINISH ALUMINIUM BODY BOOT TYPE DIRT SEALS

CALIPER POSITIONING

RHT	RIGHT HAND TRAILING (BEHIND AXLE)
LHT	LEFT HAND TRAILING (BEHIND AXLE)
RHL	RIGHT HAND LEADING (IN FRONT OF AXLE)
LHL	LEFT HAND LEADING (IN FRONT OF AXLE)

PART NUMBERING CONVENTION

PART NUMBER	DESCRIPTION
CP9562-2S0	RHT - SIDE FEED - NO ANTI KNOCK BACK SPRINGS
CP9562-3S0	LHT - SIDE FEED - NO ANTI KNOCK BACK SPRINGS
CP9562-4S0	RHL - SIDE FEED - NO ANTI KNOCK BACK SPRINGS
CP9562-5S0	LHL - SIDE FEED - NO ANTI KNOCK BACK SPRINGS



Alterations		Rev	Chg	Issue
Date & No.	Particulars			
1 25/10/16 R4188	FIRST ISSUE			# AT
2 05/01/17 R4188	RADIAL PROFILE REFINED (SHEET 2)			# AT
3 18/05/17 R4188	RETAINER TORQUE UPDATED: WAS 27.1Nm, NOW 19Nm			4L AT
4 17/07/17 R4188	PART NUMBERING CONVENTION TABLE UPDATED WITH CORRECT PART NO'S			1H AT
5 29/08/18 R4188_33	ADDED VALUE FOR DRY WEIGHT (LESS PADS) - 4.27kg			3P SFB

SCALE 1:1	SHEET 1 OF 2
DRAWN ALTHORPE	
APPROVED	
DERIVED FROM	
TITLE	
CALIPER INSTALLATION DRAWING	
Ø 390 x 36 MAX DISC (CEJ BORES)	
DRG NO.	cp9562-1cd

FOR INSTALLED PROFILES SEE SHEET 2

A0 INSTALLATION DRAWING

IF THIS DOCUMENT IS PRINTED IN HARDCOPY, IT IS FOR INFORMATION USE ONLY AND THEREFORE IS NOT SUBJECT TO UPDATING CONTROLS. ALWAYS REFER TO SOLIDWORKS VIEWER FOR LATEST ISSUE



FIRST ANGLE PROJECTION

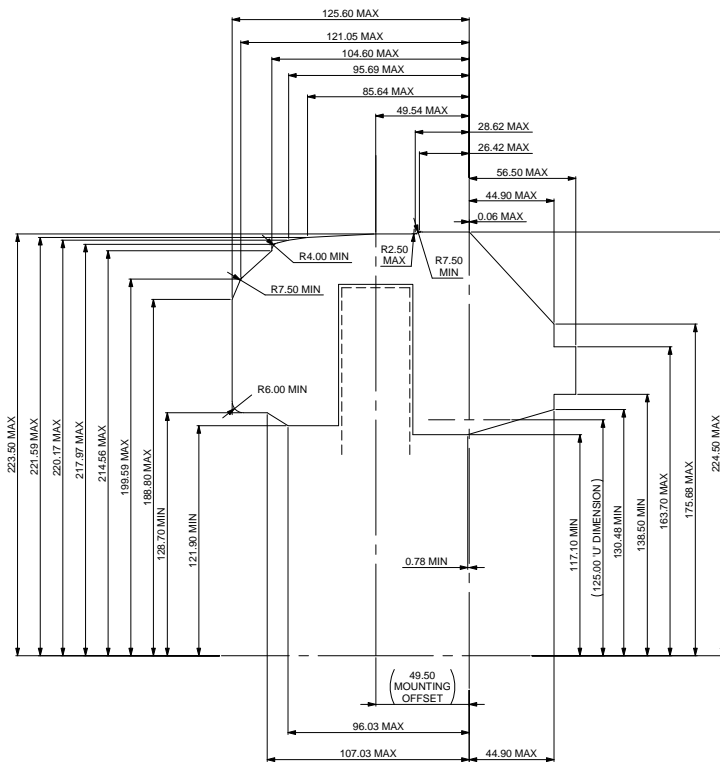
THIS DRAWING IS CONFIDENTIAL AND IS SUPPLIED ON THE EXPRESS CONDITION THAT IT SHALL NOT BE LOANED OR COPIED OR DISCLOSED TO ANY OTHER PERSON OR USED FOR ANY OTHER PURPOSE WITHOUT THE WRITTEN CONSENT OF AP RACING LTD.



AP Racing
Wheler Road
Coventry
CV3 4LB

Tel: +44 (0)24 7663 9595
Fax: +44 (0)24 7663 9559
e-mail: sales@apracings.co.uk

© AP Racing Ltd. 2016
Web site: HTTP://www.apracings.com



CALIPER INSTALLED PROFILE
ON Ø390.0 x 36.00 DISC

Alterations		Issue
Date & No.	Particulars	Zone
01/02	SEE SHEET 1 FOR ISSUE INFORMATION.	-

SCALE 1:1	SHEET 2 OF 2
DRAWN ALTHORPE	
APPROVED	
DERIVED FROM	
TITLE	
CALIPER INSTALLATION DRAWING	
Ø390 x 36 MAX DISC (CEJ BORES)	
DRG NO.	cp9562-1cd