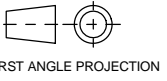


PUBLICATION P12.237

ISSUE: 3

If this document is printed in hardcopy, it is for information use only and therefore is not subject to updating controls. Always refer to viewer for latest issue.



THIS DRAWING IS CONFIDENTIAL AND IS SUPPLIED ON THE EXPRESS CONDITION THAT IT SHALL NOT BE LOANED OR COPIED OR DISCLOSED TO ANY OTHER PERSON OR USED FOR ANY OTHER PURPOSE WITHOUT THE WRITTEN CONSENT OF AP RACING LTD.



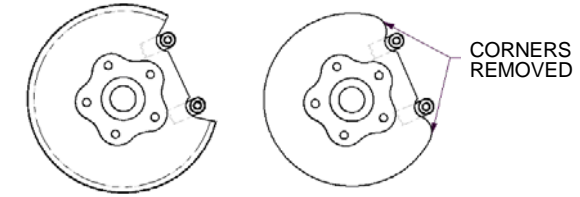
AP Racing
Wheler Road
Coventry
CV3 4LB
Tel: +44 024 7663 9595
Fax: +44 024 7663 9559
e-mail: sales@apracings.com
Web site: HTTP://www.apracings.com

BMW E92 335i REAR KIT NUMBER CP6625-1000		
Ref	DESCRIPTION	QTY
1	BMW REAR MOUNTING LUGS	-
2	BMW BRAKE DISC	-
3	CALIPER MOUNTING BRACKET	2
4	BMW BRACKET Mtg BOLT	-
5	CALIPER Mtg BOLT	4
6	ANTI RATTLE CLIP	2
7	PAD RETAINING PIN	4
8	CALIPER LEFT HAND CALIPER RIGHT HAND	1 1
9	CALIPER PAD SET (4)	1
10	CALIPER WASHER	4
11	M10 MALE ADAPTOR	2
12	GASKET	2

Tightening Torques	
Part Ref #	Torque
Bolt Ref 5	58NM
Bolt Ref 4	58NM
Adaptor Ref 11	25NM
Caliper Bleed Screw	17NM

RETAIN OEM CALIPER MOUNTING BOLTS FOR APR MOUNTING BRACKET

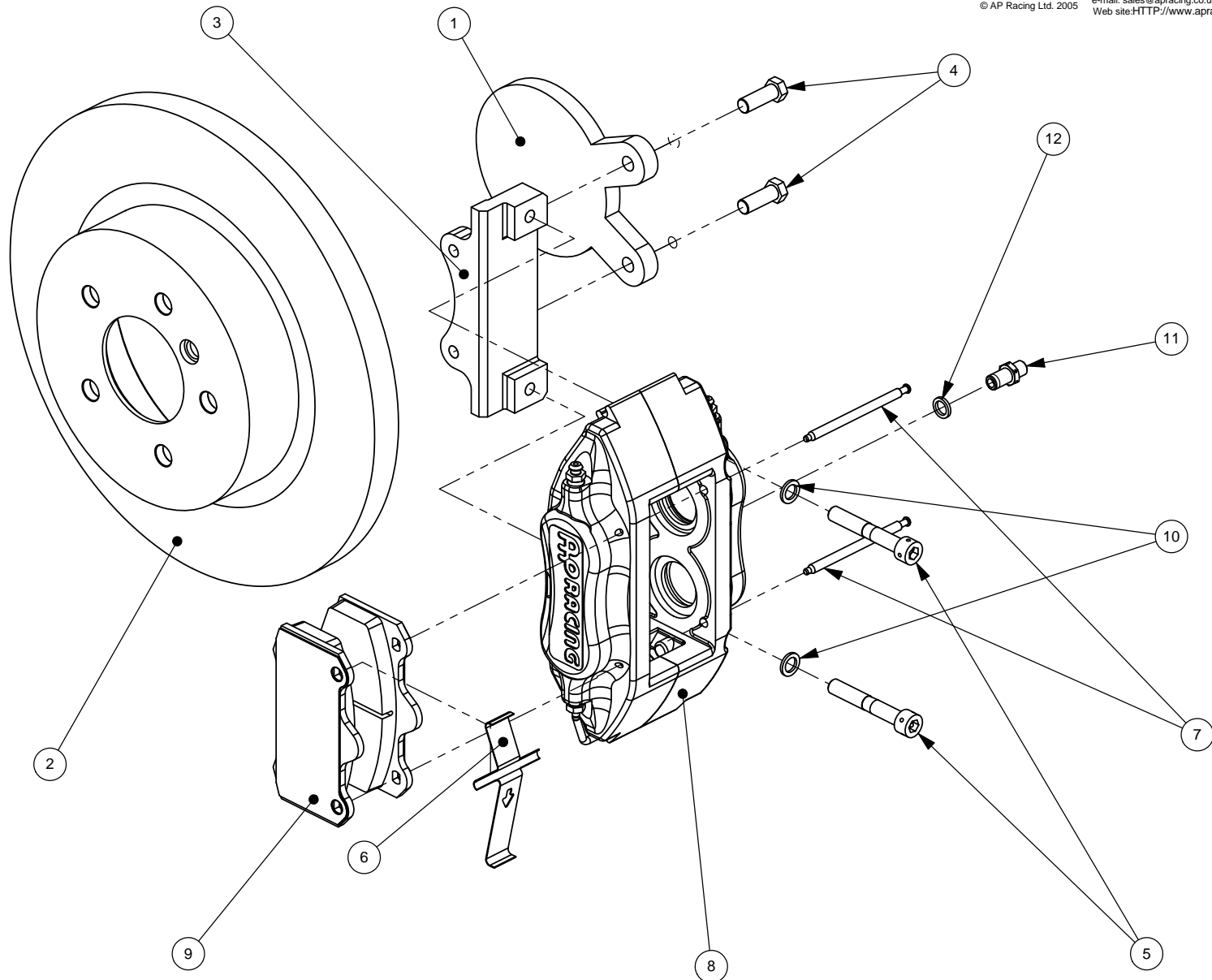
SPLASH GUARD BEFORE MODIFICATION



SPLASH GUARD AFTER MODIFICATION

MODIFY SPLASH GUARD BY REMOVING THE CORNERS AS SHOWN IN THE DIAGRAM ABOVE TO ALLOW CLEARANCE FOR LARGER CALIPER.

Comments
Please use original BMW brake hose, bracket mounting bolts, and discs. Illustration is of left hand assembly



PLEASE RETAIN THIS SHEET FOR FUTURE REFERENCE

THIS IS A PICTORIAL VIEW FOR REFERENCE ONLY. SOME PARTS MAY VARY FROM THOSE SUPPLIED. AP RACING RESERVE THE RIGHT TO CHANGE COMPONENTS WITHOUT PRIOR NOTICE.
Drawn By: Lee Stretch