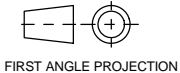


PUBLICATION P12.245

ISSUE: 3

FOR DISC REPLACEMENT REQUIREMENTS,
PLEASE ORDER KIT # **CP6895-03M.CG12** *

If this document is printed in hardcopy,
it is for information use only and therefore is
not subject to updating controls. Always
refer to viewer for latest issue.



FIRST ANGLE PROJECTION

THIS DRAWING IS CONFIDENTIAL AND IS SUPPLIED ON THE EXPRESS CONDITION THAT
IT SHALL NOT BE LOANED OR COPIED OR DISCLOSED TO ANY OTHER PERSON OR USED
FOR ANY OTHER PURPOSE WITHOUT THE WRITTEN CONSENT OF AP RACING LTD.



AP Racing
Wheler Road
Coventry
CV3 4LB

Tel: +44 024 7663 9595
Fax: +44 024 7663 9559

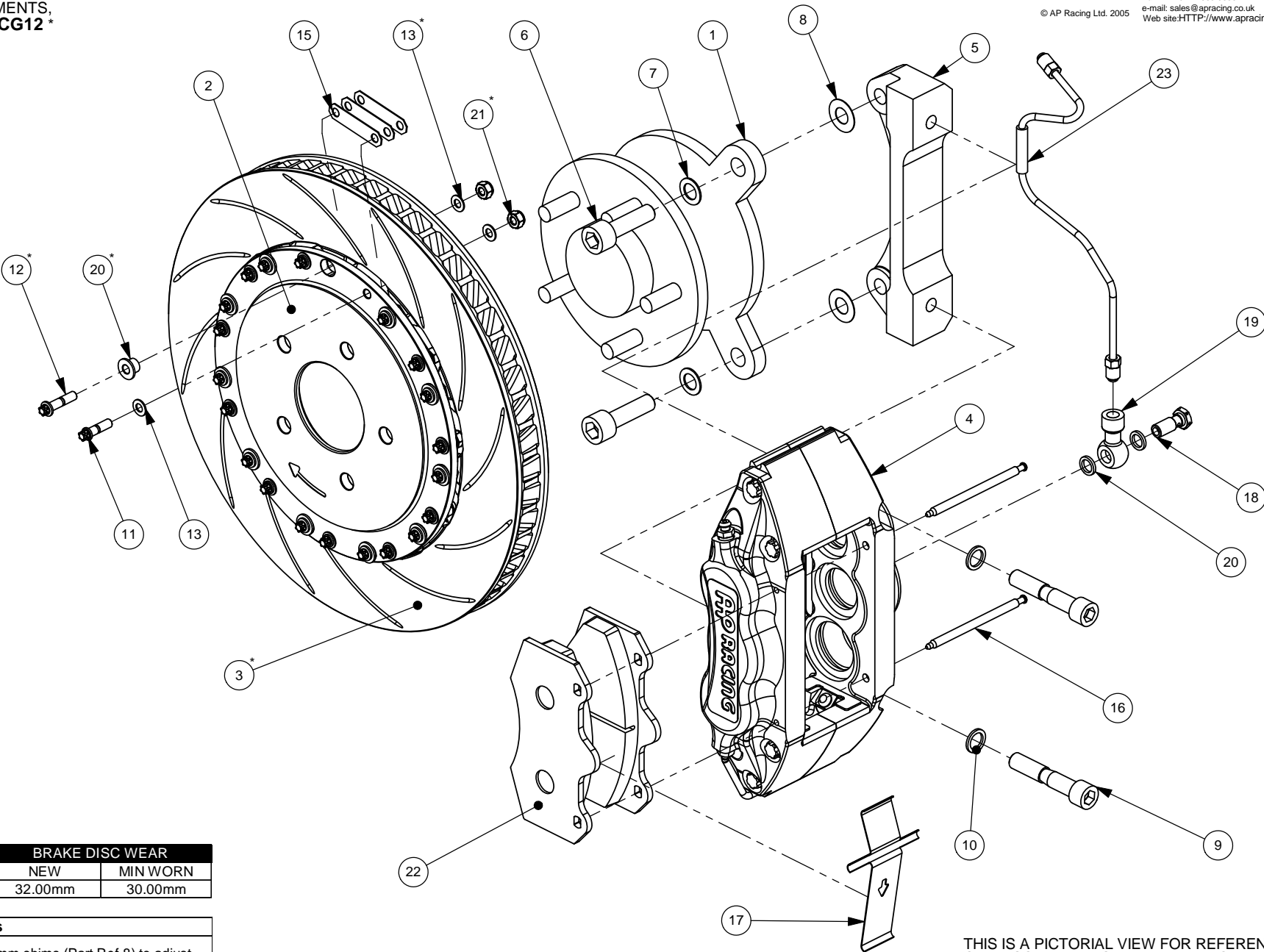
e-mail: sales@apracing.co.uk
Web site: HTTP://www.apracing.com

© AP Racing Ltd. 2005

MITSUBISHI EVOLUTION X FRONT KIT NUMBER CP7040M1014

BOM Table

Ref	DESCRIPTION	QTY
1	MITSUBISHI FRONT UPRIGHT	1
2	MOUNTING BELL	2
3	VENTED DSC RIGHT HAND VENTED DISC LEFT HAND	1 1
4	CALIPER RIGHT HAND CALIPER LEFT HAND	1 1
5	MOUNTING BRACKET	2
6	M14x45 BRACKET Mtg BOLT	4
7	WASHER	4
8	0.5mm BRACKET SHIM	12
9	M12x65 CALIPER Mtg BOLT	4
10	Ø18 CALIPER WASHER	4
11	1/4"UNF 6 LOBE BOLT	24
12	1/4"UNF 6 LOBE BOLT	24
13	Ø12.5 DISC WASHER	72
14	STEEL STRAP	72
15	PAD RETAINER PINS	4
16	ANTI-RATTLE CLIP	2
17	BANJO BOLT	2
18	M10x1.0 BANJO ADAPTOR	2
19	GASKET	4
20	TOP HAT SLEEVE	24
21	PHILDAS NUT	48
22	PAD	4
23	PIPE ASSEMBLY RIGHT HAND PIPE ASSEMBLY LEFT HAND	1 1



Tightening Torques	
Part Ref #	Torque
Bolt Ref 6	80NM
Bolt Ref 9	68NM
Bolt/Nut Ref 11/12/17	14NM
Tube Nuts Ref 21	22NM
Caliper Bleed Screw	17NM

BRAKE DISC WEAR	
NEW	MIN WORN
32.00mm	30.00mm

Comments

Check caliper is central over disc, use 0.5mm shims (Part Ref 8) to adjust
bracket if required, note disc assembly direction arrow on OD of bell
Illustration is of right hand assembly

PLEASE RETAIN THIS SHEET FOR FUTURE REFERENCE

THIS IS A PICTORIAL VIEW FOR REFERENCE
ONLY. SOME PARTS MAY VARY FROM THOSE
SUPPLIED. AP RACING RESERVE THE RIGHT
TO CHANGE COMPONENTS WITHOUT PRIOR
NOTICE. Drawn By: Oliver Moore