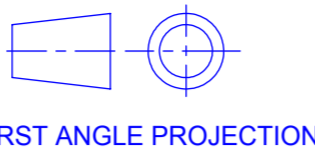
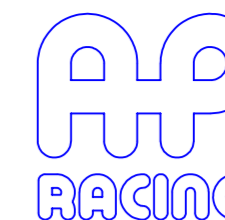


PUBLICATION P12.316 ISSUE 3

If this document is printed in hardcopy, it is for information use only and therefore is not subject to updating controls. Always refer to viewer for latest issue.



THIS DRAWING IS CONFIDENTIAL AND IS SUPPLIED ON THE EXPRESS CONDITION THAT IT SHALL NOT BE LOANED OR COPIED OR DISCLOSED TO ANY OTHER PERSON OR USED FOR ANY OTHER PURPOSE WITHOUT THE WRITTEN CONSENT OF AP RACING LTD.

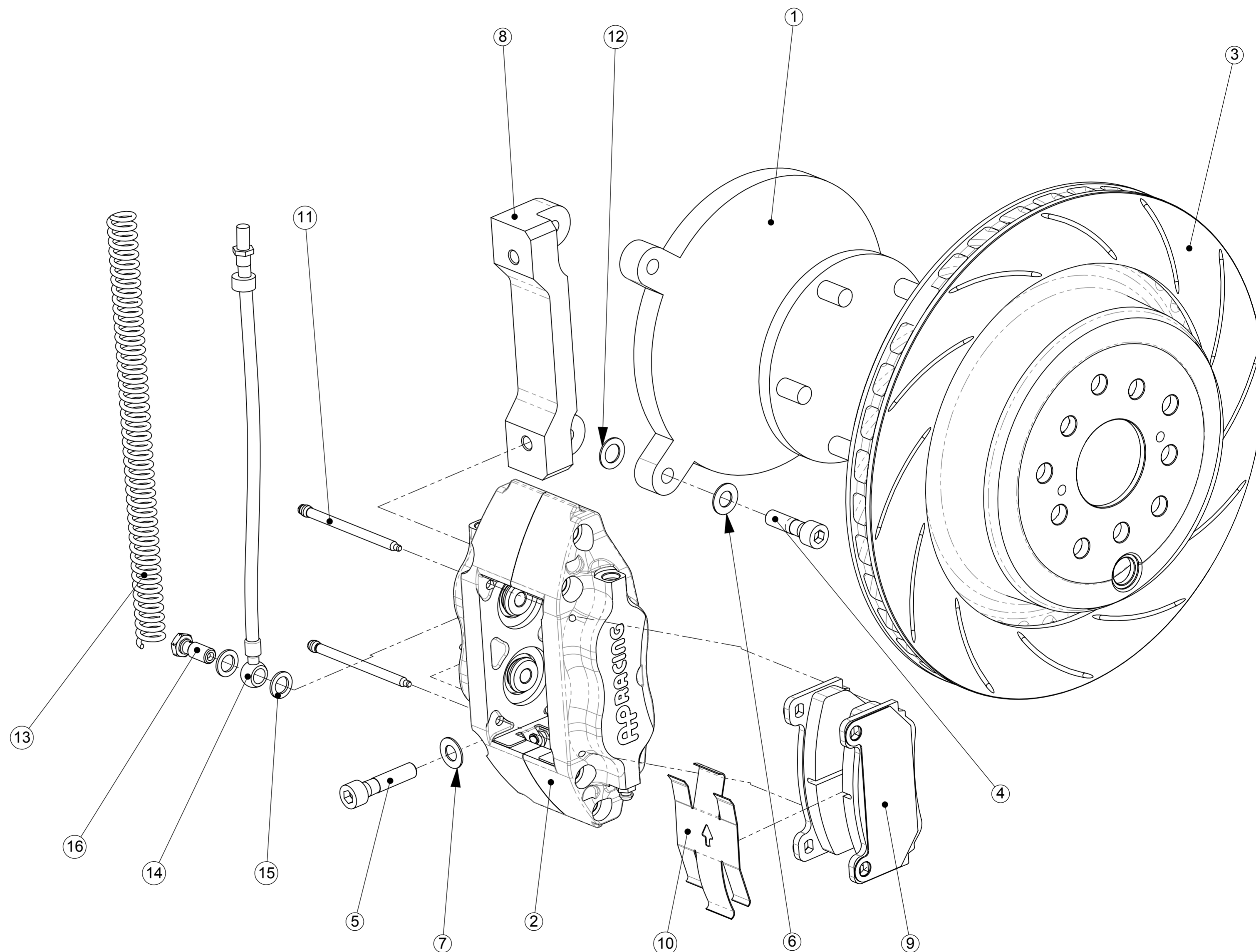


AP Racing
Wheler Road
Coventry
CV3 4LB

Tel: +44 024 7663 9595
Fax: +44 024 7663 9559
e-mail: sales@apracing.co.uk
Web site: HTTP://www.apracing.com

© AP Racing Ltd. 2005

SUBARU BRZ REAR KIT NUMBER CP7615-1005		
Ref	Description	QTY
1	Rear Upright (Ref. Only)	-
2	Caliper Right Hand	1
	Caliper Left Hand	1
3	Disc Right Hand	1
	Disc Left Hand	1
4	M10 x 37 Bracket Mtg Bolt	4
5	M10 x 45 Caliper Mtg Bolt	4
6	Ø20 Bracket Mtg Washer	4
7	Ø20 Caliper Mtg Washer	4
8	Mounting Bracket	2
9	Pad Set (4)	1
10	Anti-Rattle Clip	2
11	Pad Retainer Pin	4
12	Shims	12
13	Nylon Armour	2
14	Hose Kit	1
15	Gasket (Part of Hose Kit)	4
16	Banjo Bolt (Part of Hose kit)	2



IF NECESSARY REMOVE CASTING FLASH FROM OUTER RADI OF MOUNTING LUG

Tightening Torques	
Part Ref #	Torque
Bolt Ref 4	58Nm
Bolt Ref 5	58Nm
Bleed Screw	17Nm

BRAKE DISC WEAR	
NEW	MIN WORN
24.00mm	23.00mm

Comments

Check caliper is central over disc, use shims (Part Ref 12) to adjust bracket if required.
Ensure splash guard does not foul on disc face, bend as necessary.

PLEASE RETAIN THIS SHEET FOR FUTURE REFERENCE

THIS IS A PICTORIAL VIEW FOR REFERENCE ONLY. SOME PARTS MAY VARY FROM THOSE SUPPLIED. AP RACING RESERVE THE RIGHT TO CHANGE COMPONENTS WITHOUT PRIOR NOTICE.

Drawn By: Andrew Thorpe