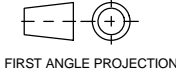


PUBLICATION P12.338

ISSUE: 1

If this document is printed in hardcopy, it is for information use only and therefore is not subject to updating controls. Always refer to viewer for latest issue.



THIS DRAWING IS CONFIDENTIAL AND IS SUPPLIED ON THE EXPRESS CONDITION THAT IT SHALL NOT BE LOANED OR COPIED OR DISCLOSED TO ANY OTHER PERSON OR USED FOR ANY OTHER PURPOSE WITHOUT THE WRITTEN CONSENT OF AP RACING LTD.



AP Racing
Wheler Road
Coventry
CV3 4LB

Tel: +44 024 7663 9595
Fax: +44 024 7663 9559
e-mail: sales@ap racing.co.uk
Web site: HTTP://www.ap racing.com

BMW E60 M5 STANDARD WHEEL KIT NUMBER CP5555M1051

Ref	Description	QTY
1	Caliper Left Hand	1
	Caliper Right Hand	1
2	Disc & Bell Ass LH	1
	Disc & Bell Ass RH	1
3	Mounting Bracket	2
4	Bracket Mtg Bolt	4
5	Bracket Mtg Washer	4
6	0.5mm Washer/Shim	12
7	Caliper Mtg Bolt	4
8	Anti-Rattle Clip	2
9	Pad Retainer Insert	4
10	Pad Retainer Bolt	4
11	Pad Set (4)	1
12	Pad Retraction Guide Pin	2
13	Pad Retraction Spring	2
14	Hose	2
15	Banjo Bolt	2
16	Gasket	4
17	Nylon Armour	2

Tightening Torques	
Part Ref #	Torque
Bolt Ref 4	68NM
Bolt Ref 7	68NM
Bolt Ref 10	13NM
Banjo Bolt Ref 15	25NM
Caliper Bleed Screw	17NM

BRAKE DISC WEAR	
NEW	MIN WORN
35.56mm	34.56mm

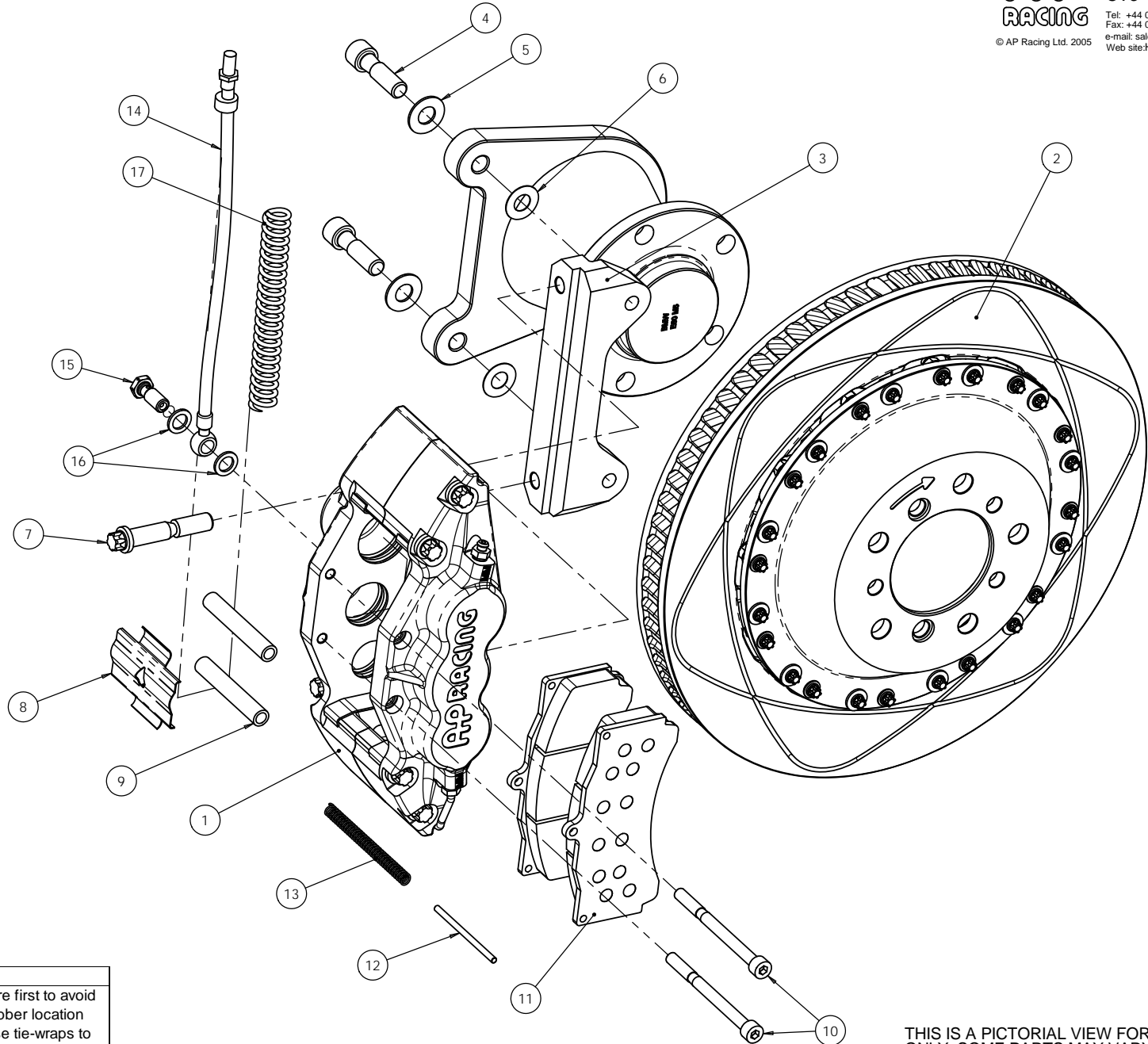
IMPORTANT

DISC AND STRAP TO REMAIN AS ONE ASSEMBLY AND SHOULD NOT BE DISMANTLED.

Comments

When removing the standard caliper, disconnect pad wear wire first to avoid damage. Tie-wrap this to suitable place on strut. Remove rubber location grommet from OE hose by splitting it. Fit to APR hose and use tie-wraps to secure hose in bracket. 2 of M12 x 1.75 x 60mm bolts included to be used on upright's bottom mounting lugs.

Check caliper is central over disc, use 0.5mm shims (Part Ref 6) to adjust bracket if required. Illustration is of right hand assembly



PLEASE RETAIN THIS SHEET FOR FUTURE REFERENCE

THIS IS A PICTORIAL VIEW FOR REFERENCE ONLY. SOME PARTS MAY VARY FROM THOSE SUPPLIED. AP RACING RESERVE THE RIGHT TO CHANGE COMPONENTS WITHOUT PRIOR NOTICE.

Drawn By: Andrew Thorpe