

PUBLICATION P12.079

ISSUE : 2

If this document is printed in hardcopy, it is for information use only and therefore is not subject to updating controls. Always refer to viewer for latest issue.



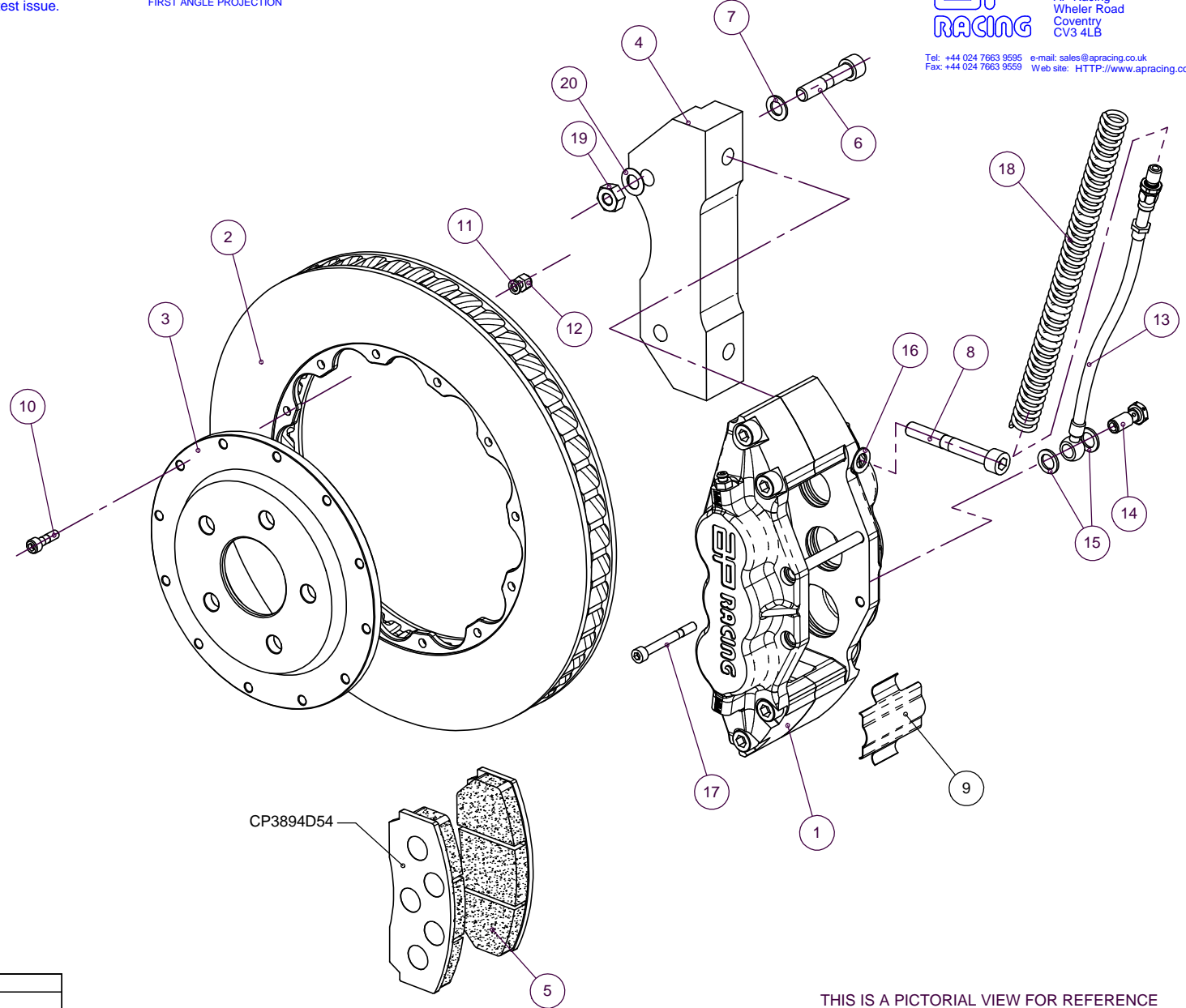
THIS DRAWING IS CONFIDENTIAL AND IS SUPPLIED ON THE EXPRESS CONDITION THAT IT SHALL NOT BE LOANED OR COPIED OR DISCLOSED TO ANY OTHER PERSON OR USED FOR ANY OTHER PURPOSE WITHOUT THE WRITTEN CONSENT OF AP RACING LTD.



Tel: +44 024 7663 9595 e-mail: sales@ap racing.co.uk
Fax: +44 024 7663 9559 Web site: HTTP://www.ap racing.com

SUPRA Mk4 TWIN TURBO KIT NUMBER CP5555-1008		
Ref	Description	QTY
1	Caliper Right Hand	1
	Caliper Left Hand	1
2	Disc Right Hand	1
	Disc Left Hand	1
3	Mounting Bell	2
4	Mounting Bracket	2
5	Pad Set	1
6	Bracket Mtg Bolt	4
7	0.5mm Washer/Shim	12
8	Caliper Mtg Bolt	4
9	Anti-Rattle Clip	2
10	Disc Mtg Bolt	24
11	Washer	24
12	Disc Mtg Nut	24
13	Hose Kit	2
14	Banjo Bolt	2
15	Gasket	4
16	Washer	4
17	Pad Retainer Bolt	4
18	Nylon Armouring	2
19	Cleveloc Nut	4
20	Washer	4
21		
22		
23		
24		
25		

Tightening Torques	
Part Ref #	Torque
Bolt Ref 6 & 19	68NM
Bolt Ref 8	58NM
Bolt/Nut Ref 10/12	14NM
Bolt Ref 14	25NM
Banjo Bolt Ref 17	13NM
Caliper Bleed Screw	17NM



BRAKE DISC WEAR	
NEW	MIN WORN
35.56mm	34.00mm

Comments

Check caliper is central over disc. Use 0.5mm shim to adjust if required

THIS IS A PICTORIAL VIEW FOR REFERENCE ONLY. SOME PARTS MAY VARY FROM THOSE SUPPLIED. AP RACING RESERVE THE RIGHT TO CHANGE COMPONENTS WITHOUT PRIOR NOTICE.

PLEASE RETAIN THIS SHEET FOR FUTURE REFERENCE

DRAWN : astrachan