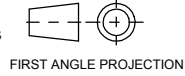


PUBLICATION P12.194

ISSUE: 3

If this document is printed in hardcopy, it is for information use only and therefore is not subject to updating controls. Always refer to viewer for latest issue.



THIS DRAWING IS CONFIDENTIAL AND IS SUPPLIED ON THE EXPRESS CONDITION THAT IT SHALL NOT BE LOANED OR COPIED OR DISCLOSED TO ANY OTHER PERSON OR USED FOR ANY OTHER PURPOSE WITHOUT THE WRITTEN CONSENT OF AP RACING LTD.



© AP Racing Ltd. 2004

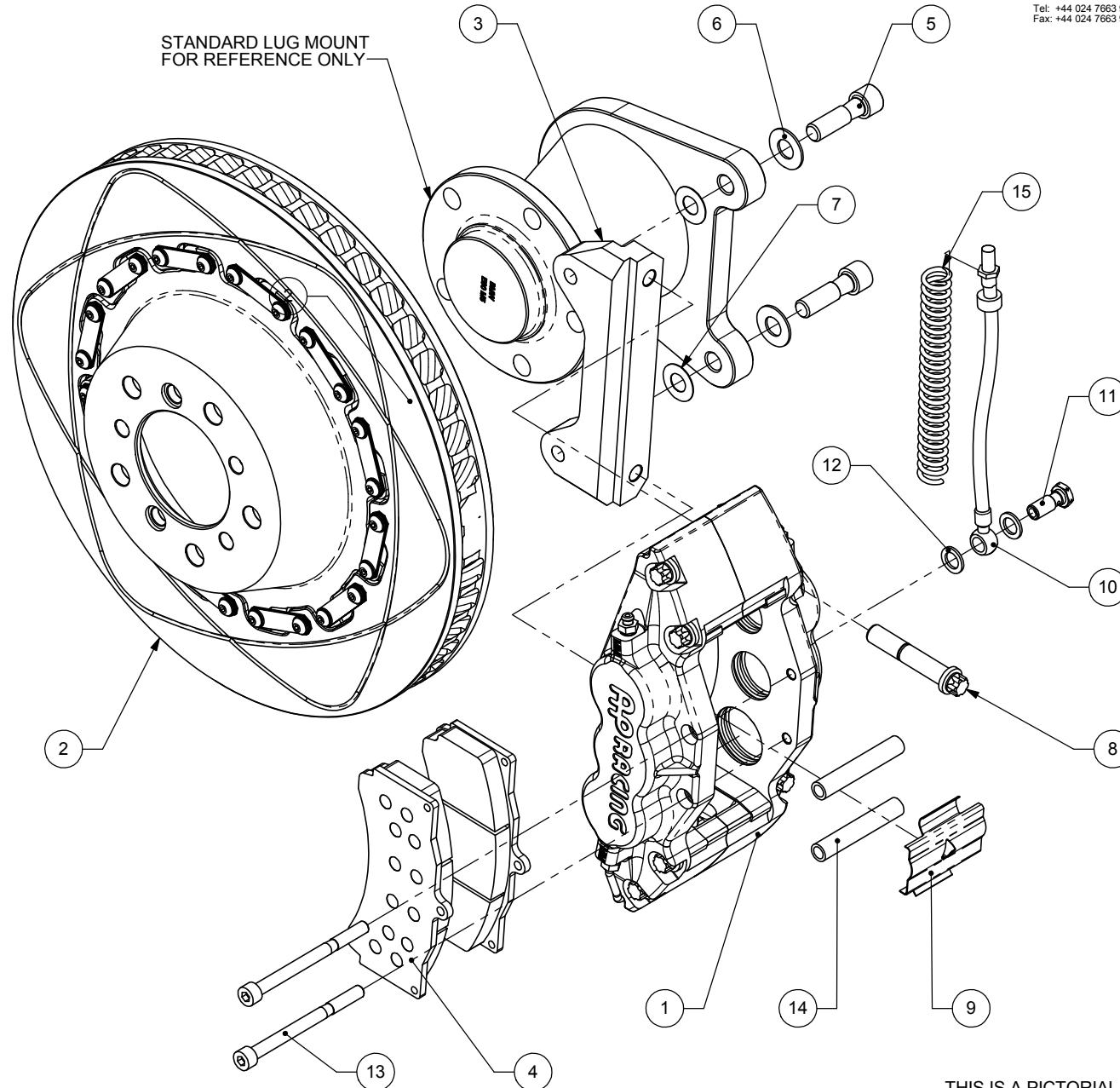
AP Racing
Wheeler Road
Coventry
CV3 4LB

Tel: +44 024 7663 9595 e-mail: sales@apracing.co.uk
Fax: +44 024 7663 9559 Web site: HTTP://www.apracing.com

BMW E60 M5 STANDARD WHEEL KIT NUMBER CP5555T1045

Ref	Description	QTY
1	Caliper Left Hand	1
	Caliper Right Hand	1
2	Disc & Bell Ass LH	1
	Disc & Bell Ass RH	1
3	Mounting Bracket	2
4	Pad Set	1
5	Mtg Bolt	4
6	Washer	4
7	0.5mm Washer/Shim	12
8	Caliper Mtg Bolt	4
9	Anti-Rattle Clip	2
10	Hose Kit	2
11	Banjo Bolt	2
12	Gasket	4
13	Pad Retainer Bolt	4
14	Pad Retainer Insert	4
15	Nylon Armouring	2

STANDARD LUG MOUNT
FOR REFERENCE ONLY



IMPORTANT

DISC AND STRAP TO REMAIN AS ONE ASSEMBLY AND SHOULD NOT BE DISMANTLED.

THIS IS A PICTORIAL VIEW FOR REFERENCE ONLY. SOME PARTS MAY VARY FROM THOSE SUPPLIED. AP RACING RESERVE THE RIGHT TO CHANGE COMPONENTS WITHOUT PRIOR NOTICE.

Drawn By: R. Lee

PLEASE RETAIN THIS SHEET FOR FUTURE REFERENCE